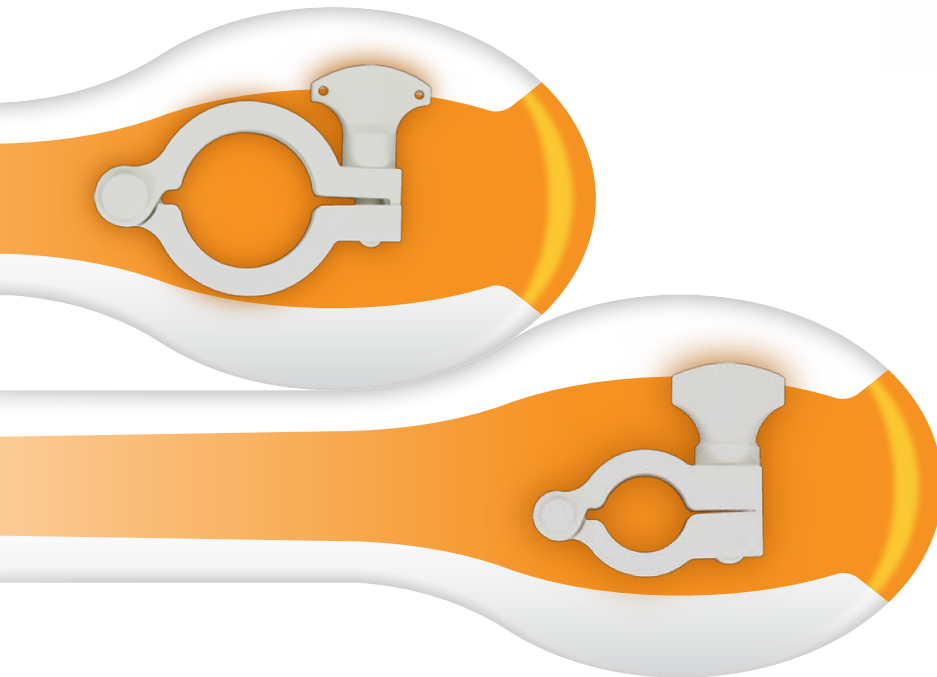


BioClamp® plastic quick-release clamps are specifically designed to meet the needs of busy pharmaceutical and bioprocessing laboratories, offering full flexibility in Single-Use applications. The clamps are specifically designed to work with Nordson MEDICAL's SF Series sanitary fitting Mini and Maxi flanges, related caps and gaskets, and in conjunction with OEM filters and bioprocessing bags. The clamp is lightweight and easy for technicians to install and provides for quick and convenient assembly release.



#### Clamp and Valve Common Features

- Can be SIP repeatedly
- Can be autoclaved repeatedly at 134°C for 5 minutes
- Can be subjected to 40 kiloGrays without detectable weakening

#### Applications

- Bioprocessing
- Single-Use Technology (SUS)
- Drug discovery and development
- Fluid transport
- Pharmaceutical scale up
- Sterile bag systems

## FEATURES

Reduced distortion on polymeric components when subjected to heat

More compatible with current Pharmaceutical and Biotech manufacturing than stainless steel

- Greater flexibility in operation
- Single-Use disposal

## SPECIFICATIONS

Materials: Glass reinforced Nylon 66

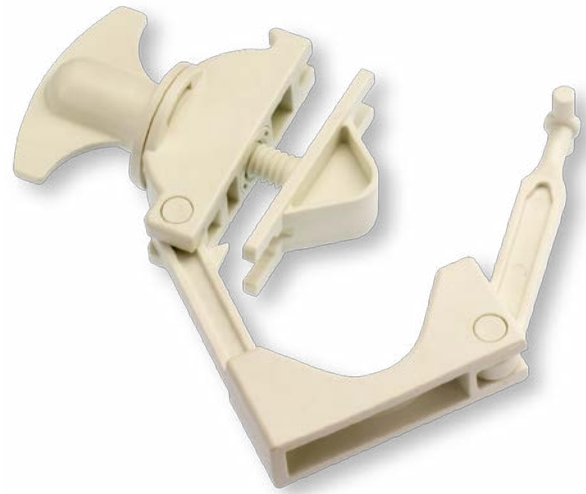
Tubing Sizes: 1/2" to 1 1/2"

Max. Operating Pressure: 150 psig

Max. Cumulative Gamma Dose: 40 kiloGrays

USP Class VI Certified Materials

The BioValve® pinch valve is a precision restriction flow controller and shut-off valve for silicone tubing used in bioprocessing and pharmaceutical manufacturing applications. BioValve products offer full flexibility in Single-Use applications. It can be installed over most common silicone tubing.



### Clamp and Valve Common Features

- Can be SIP repeatedly
- Can be autoclaved repeatedly at 134°C for 5 minutes
- Can be subjected to 40 kiloGrays without detectable weakening

### Applications

- Bioprocessing
- Single-Use Technology (SUS)
- Drug discovery and development
- Fluid transport
- Pharmaceutical scale up
- Sterile bag systems

## FEATURES

Can be calibrated to minimize flow path turbulence

Can be used one handed

Thread pitch is calibrated to 2mm per turn, permitting accurate estimation of flow restriction

## SPECIFICATIONS

Materials: Glass reinforced Nylon 66

Tubing Sizes: 1/4" to 1"

Max. Operating Pressure: 150 psig

Max. Cumulative Gamma Dose: 40 kiloGrays

USP Class VI Certified Materials