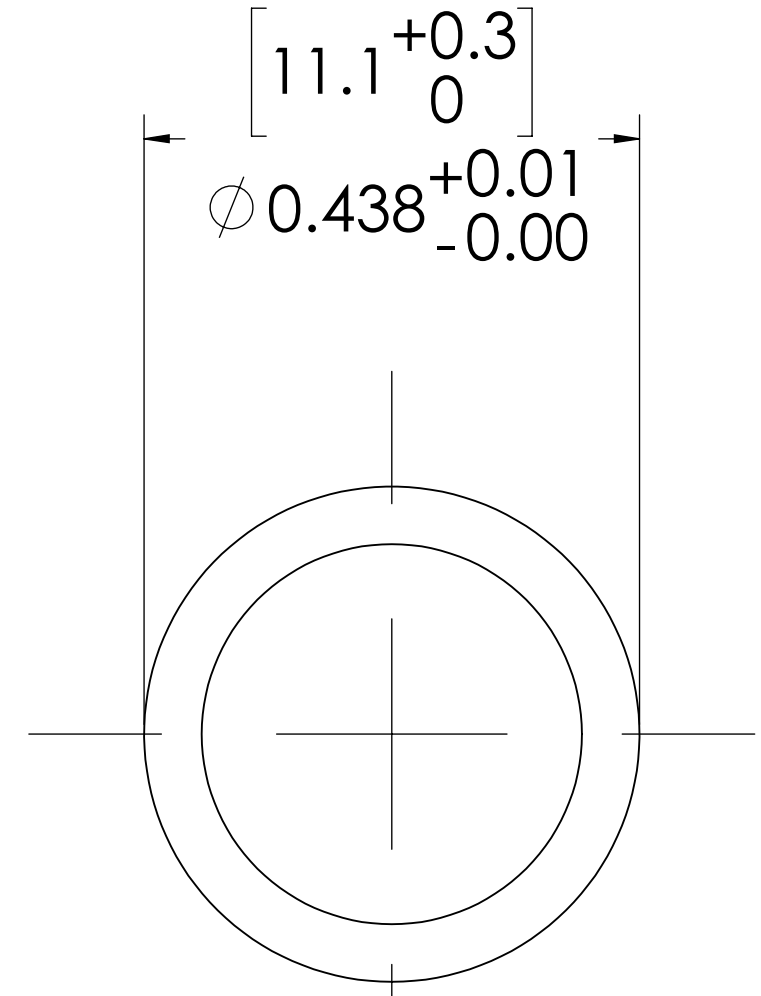
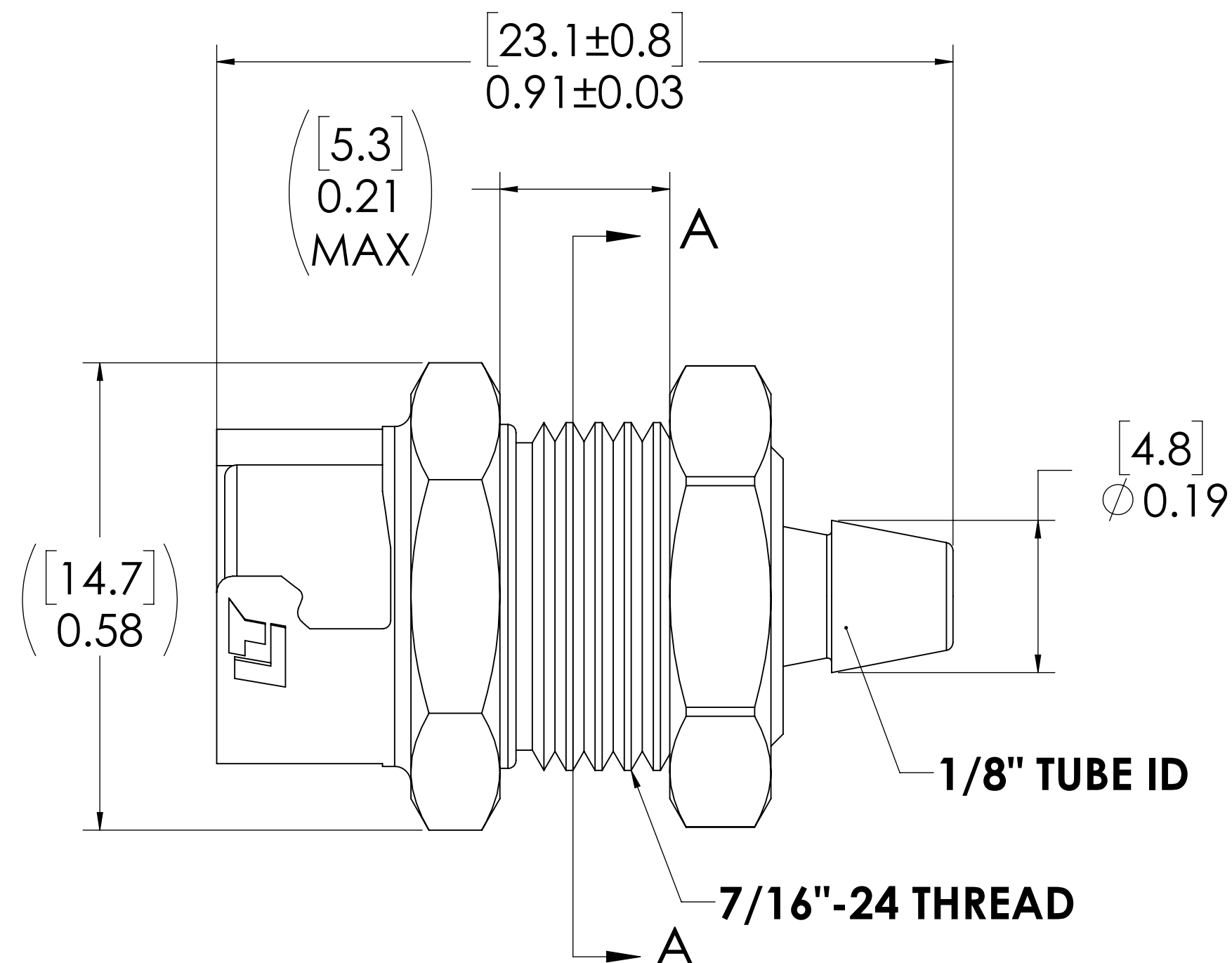
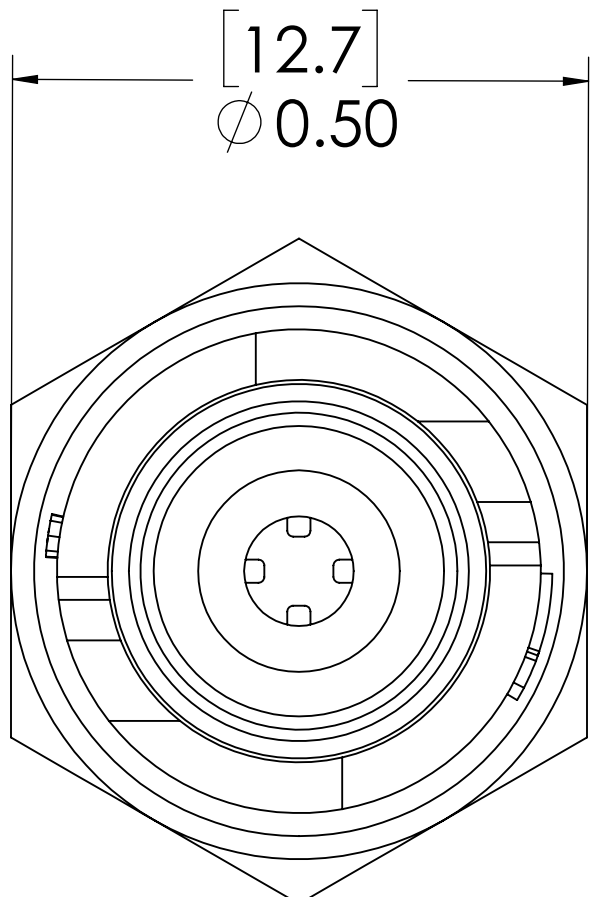
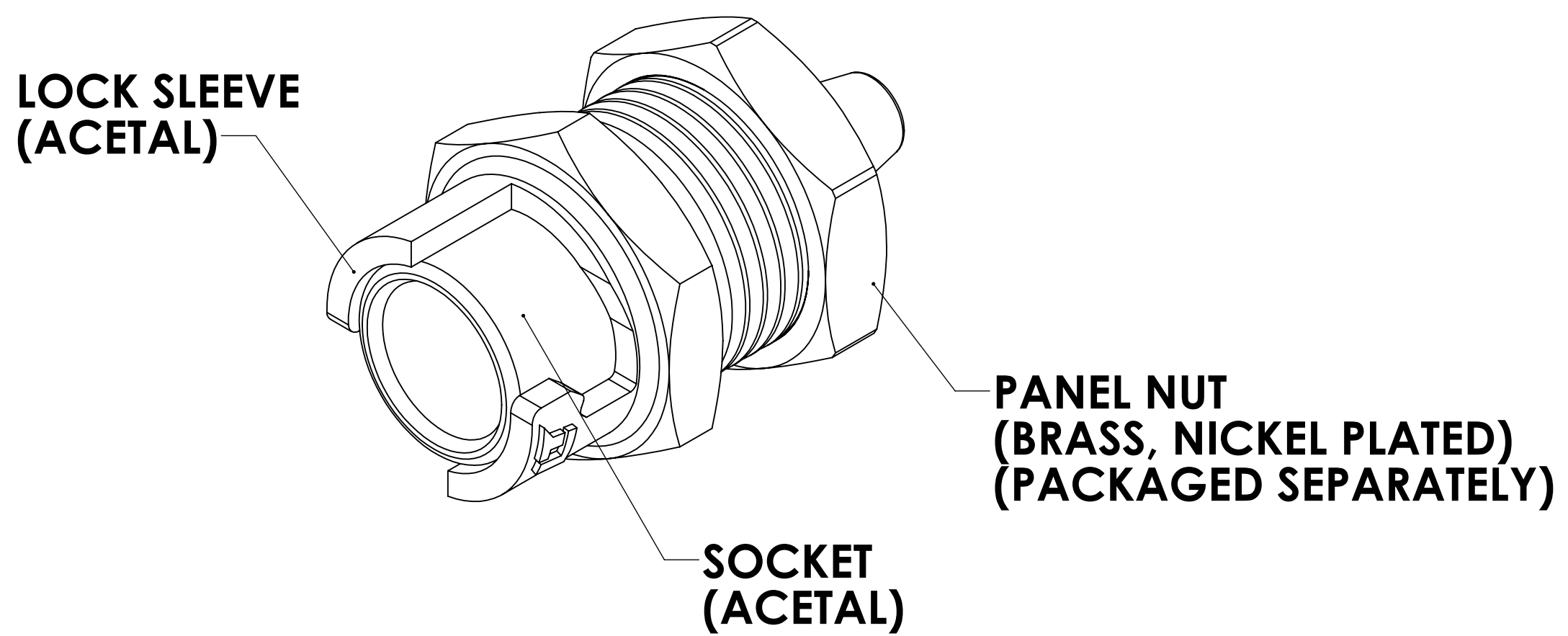


REVISIONS						
SHEET	ZONE	REV.	ECO	DESCRIPTION	DATE	APPROVED
1	ALL	NC	50307	INITIAL RELEASE	1/10/2020	HRC



PANEL OPENING (SECTION A-A)

FOR REFERENCE ONLY

- NOTES:**
- MATERIAL: ACETAL
 - COLOR: BLACK

<small>UNLESS OTHERWISE SPECIFIED: DIMENSIONS ARE IN INCHES TOLERANCES: FRACTIONAL ± 1/32 ANGULAR, MACH ± 0.5 BEND ± 2 ONE PLACE DECIMAL ± 0.1 TWO PLACE DECIMAL ± 0.01 THREE PLACE DECIMAL ± 0.005 TWO PLACE DUAL (mm) [± 0.12]</small>	DRAWN	RDA	10/14/2019	
	CHECKED	HRC	10/14/19	
	ENG APPR.	HRC	1/10/20	
	MFG APPR.	BDB	1/10/20	
<small>PROPRIETARY AND CONFIDENTIAL</small>	PURCHASING	RK	1/10/20	PART NO: 10AC-S3-02BLK
<small>THE INFORMATION CONTAINED IN THIS DRAWING IS THE SOLE PROPERTY OF LINKTECH LLC. ANY REPRODUCTION OR DISCLOSURE IN PART OR AS A WHOLE WITHOUT THE WRITTEN PERMISSION OF LINKTECH LLC IS STRICTLY PROHIBITED.</small>	COMMENTS:			DESCRIPTION: LinkTech 10AC Series, Panel MT Socket, Non-Valved, 1/8" HB, Molded Black
				SIZE DWG. NO. REV C 10AC100104 A
				SCALE: NTS WEIGHT: SHEET 1 OF 1