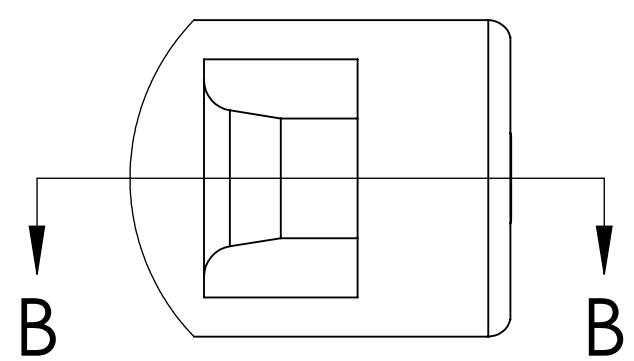
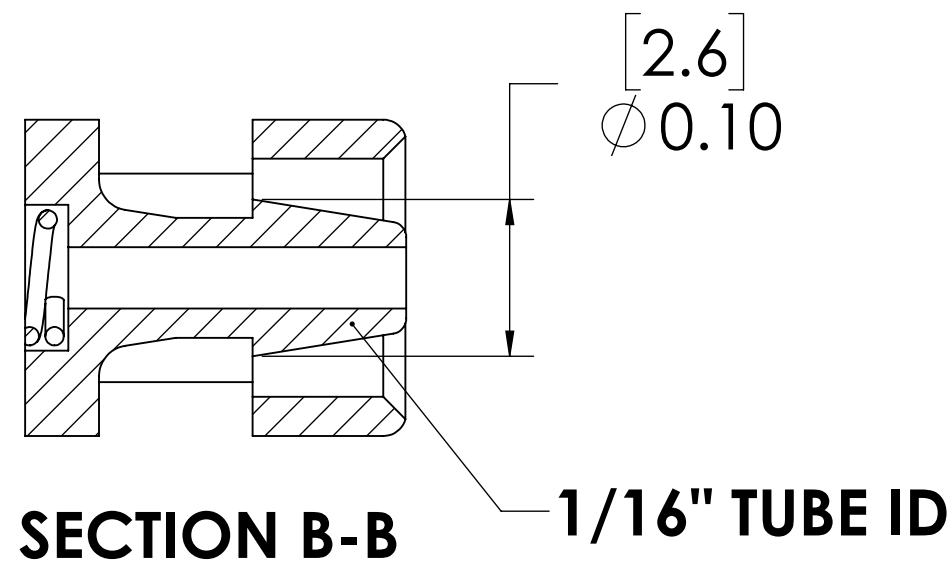


REVISIONS						
SHEET	ZONE	REV.	ECO	DESCRIPTION	DATE	APPROVED
1	ALL	A	50253	UPDATE DWG TO CURRENT FORMAT & STANDARDS	10/30/2018	HRC
ALL	ALL	B	50307	CONVERT DYED TO MOLDED BLACK	1/10/2020	HRC

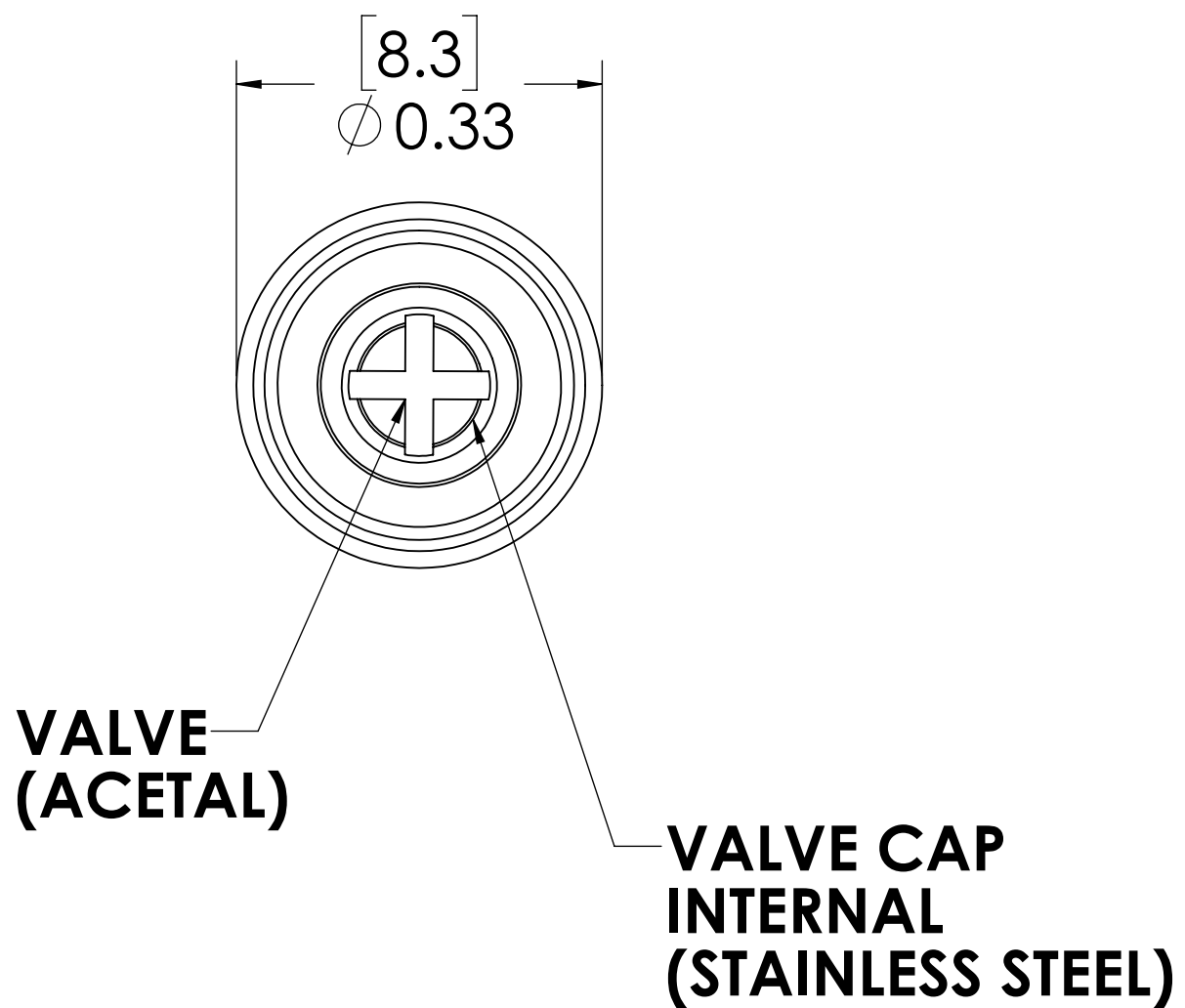


**DETAIL A**



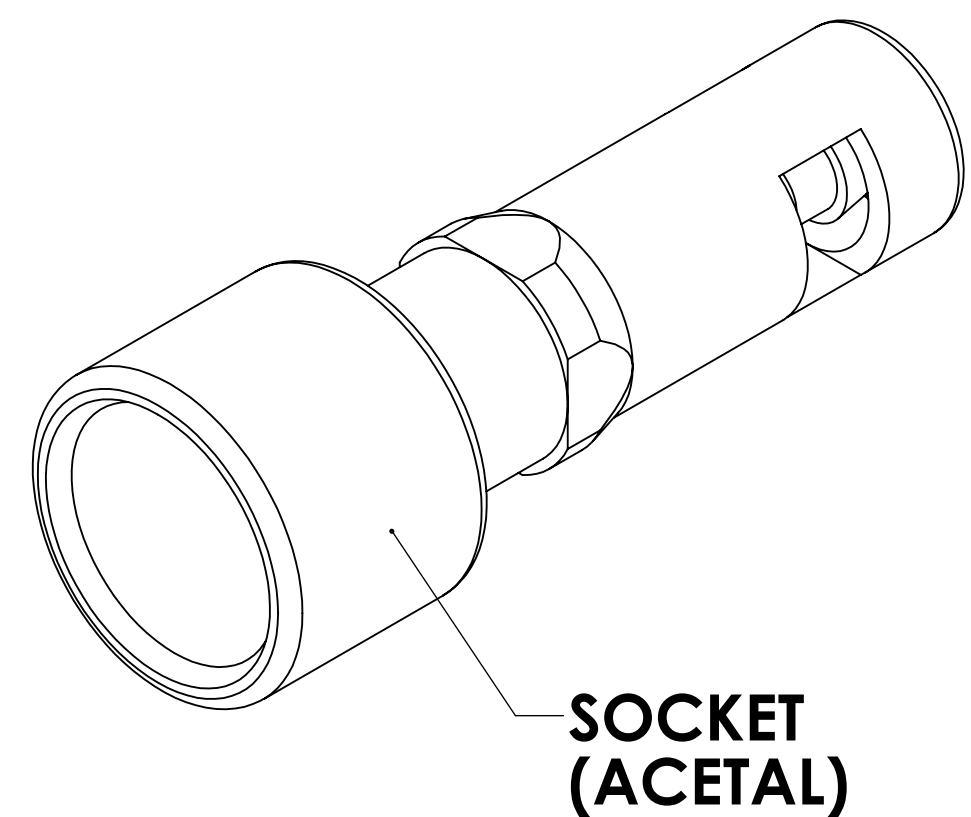
**SECTION B-B**

1/16" TUBE ID

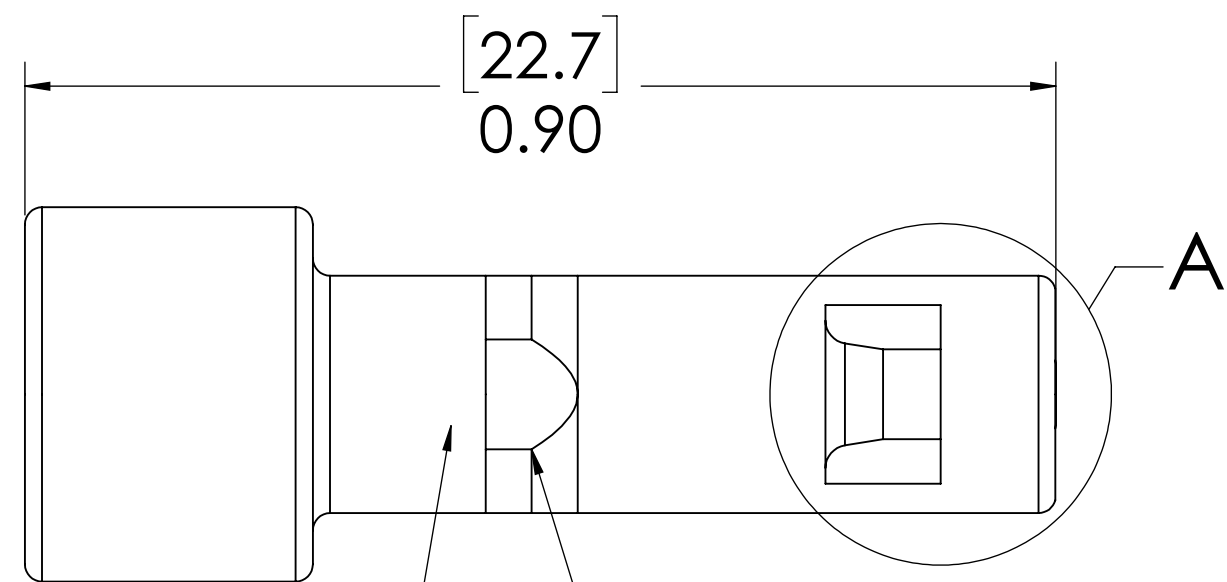


**VALVE (ACETAL)**

**VALVE CAP INTERNAL (STAINLESS STEEL)**



**SOCKET (ACETAL)**




**VALVE O-RING INTERNAL (BUNA-N)**

**VALVE SPRING INTERNAL (STAINLESS STEEL)**

- NOTES:**
1. MATERIAL: ACETAL
  2. COLOR: BLACK
  3. O-RING MATERIAL: BUNA-N
  4. O-RINGS LUBRICATED WITH FOOD GRADE SILICONE OIL, 350 CST.

**FOR REFERENCE ONLY**

UNLESS OTHERWISE SPECIFIED: DIMENSIONS ARE IN INCHES TOLERANCES: FRACTIONAL ± 1/32 ANGULAR: MACH ± 0.5 BEND ± 2 ONE PLACE DECIMAL ± 0.1 TWO PLACE DECIMAL ± 0.01 THREE PLACE DECIMAL ± 0.005 TWO PLACE DUAL (mm) [± 0.12]	DRAWN	LMP	5/2/2018	 <b>LinkTech</b> <small>DRINK ENGINEERING INTELLIGENCE</small> PART NO: <b>10ACV-SB2-01NSBLK</b> DESCRIPTION: <b>LinkTech 10AC Series Inline Socket, Valved, 1/16" HB, No Sleeve, Black</b>
	CHECKED	HRC	5/2/2018	
	ENG APPR.	HRC	10/30/18	
	MFG APPR.	BDB	10/30/18	
PRODUCTION	LS	10/30/18	COMMENTS:	
PROPRIETARY AND CONFIDENTIAL THE INFORMATION CONTAINED IN THIS DRAWING IS THE SOLE PROPERTY OF LINKTECH LLC. ANY REPRODUCTION OR DISCLOSURE IN PART OR AS A WHOLE WITHOUT THE WRITTEN PERMISSION OF LINKTECH LLC IS STRICTLY PROHIBITED.	SIZE <b>C</b> DWG. NO. <b>10AC100091</b> REV <b>B</b>	SCALE: NTS	WEIGHT:	SHEET 1 OF 1