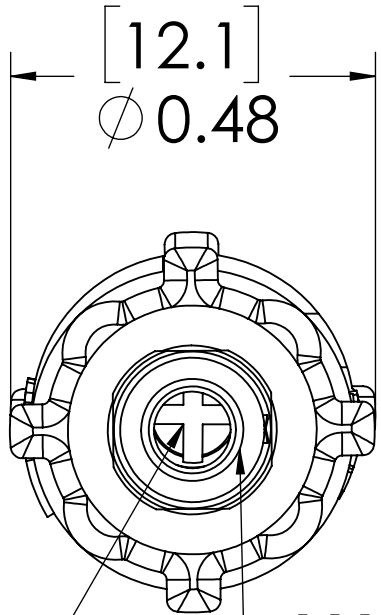


REVISIONS						
SHEET	ZONE	REV.	ECO	DESCRIPTION	DATE	APPROVED
1	ALL	A	50253	UPDATE DWG TO CURRENT FORMAT & STANDARDS	10/30/2018	HRC

PLUG
(ACETAL)

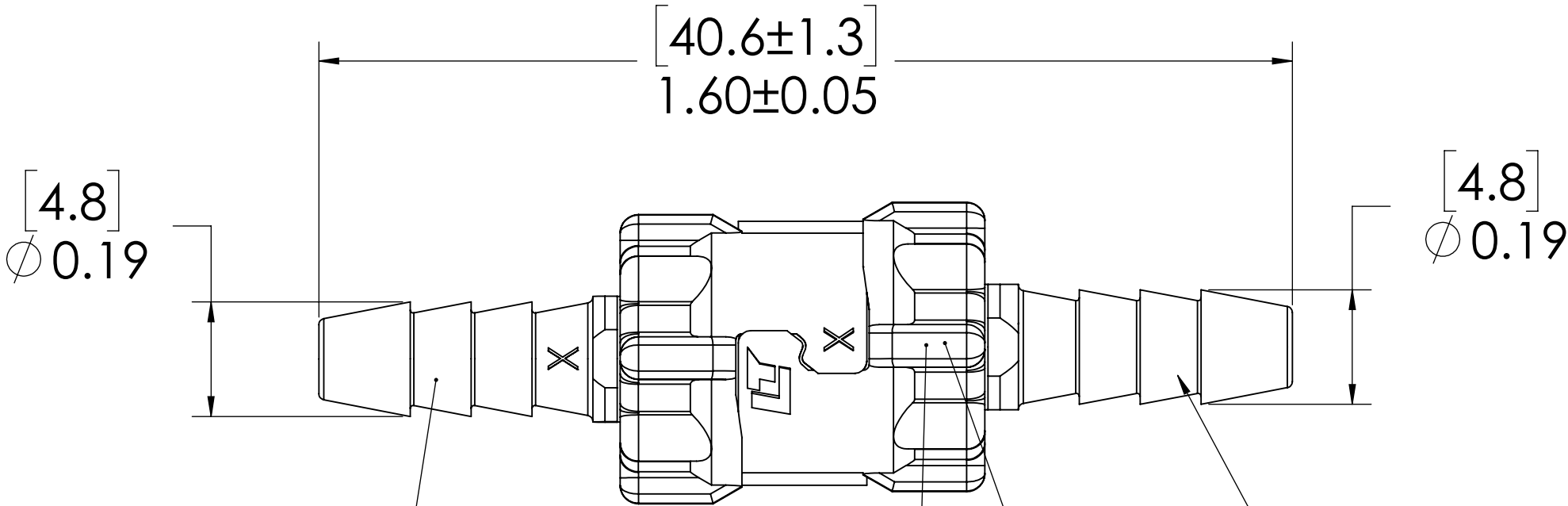
SOCKET
(ACETAL)

(2X) LOCKING SLEEVE,
(ACETAL)



VALVE
(ACETAL)
(SOCKET ONLY)

VALVE CAP
INTERNAL
(STAINLESS STEEL)
(SOCKET ONLY)



1/8" TUBE ID

VALVE SPRING,
INTERNAL
(STAINLESS STEEL)
(SOCKET ONLY)


VALVE O-RING,
INTERNAL
(BUNA-N)
(SOCKET ONLY)

1/8" TUBE ID

NOTES:

- MATERIAL: ACETAL
- COLOR: NATURAL WHITE
- O-RING MATERIAL: BUNA-N
- O-RINGS LUBRICATED WITH FOOD GRADE SILICONE OIL, 350 CST.

FOR REFERENCE ONLY

UNLESS OTHERWISE SPECIFIED:		NAME	DATE	 PART NO: 10ACV2-02	
DIMENSIONS ARE IN INCHES TOLERANCES: FRACTIONAL ±1/32 ANGULAR, MACH ±0.5 BEND ±2 ONE PLACE DECIMAL ±0.1 TWO PLACE DECIMAL ±0.01 THREE PLACE DECIMAL ±0.005 TWO PLACE DUAL (mm) [±0.12]		DRAWN	LMP 5/7/2018		
		CHECKED	HRC 5/7/2018		
		ENG APPR.	HRC 10/30/18		
		MFG APPR.	BDB 10/30/18	DESCRIPTION: LinkTech 10AC Series Inline Coupling, Valved, 1/8" HB	
PROPRIETARY AND CONFIDENTIAL		PRODUCTION	LS 10/30/18		
THE INFORMATION CONTAINED IN THIS DRAWING IS THE SOLE PROPERTY OF LINKTECH LLC. ANY REPRODUCTION OR DISCLOSURE IN PART OR AS A WHOLE WITHOUT THE WRITTEN PERMISSION OF LINKTECH LLC IS STRICTLY PROHIBITED.		COMMENTS:		SIZE C	DWG. NO. 10AC100090
				REV A	
		SCALE: NTS	WEIGHT:	SHEET 1 OF 1	