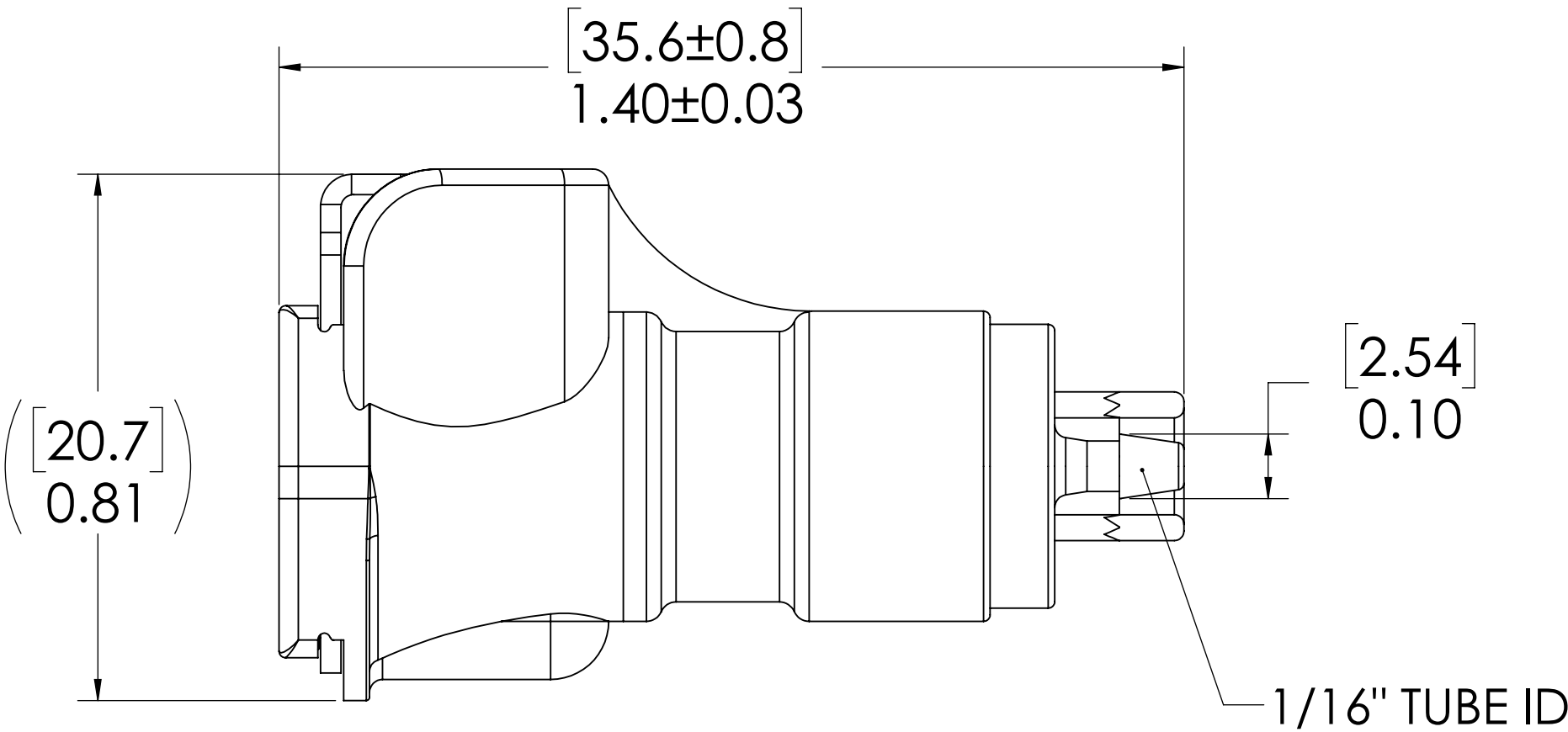
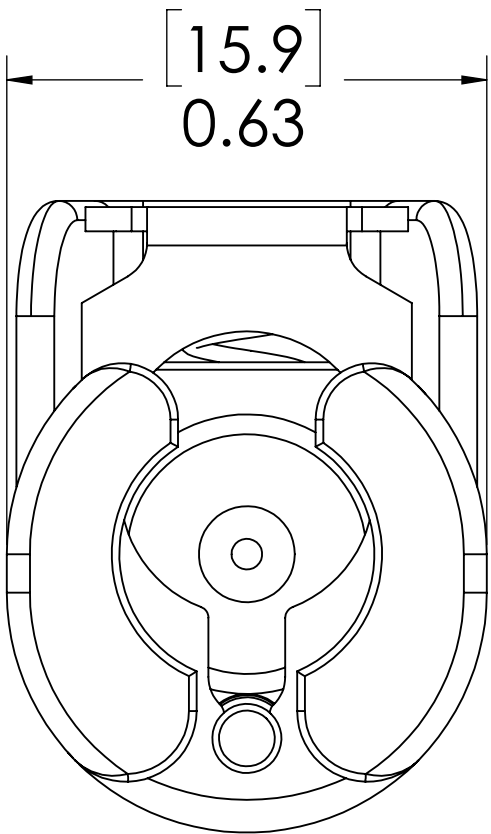
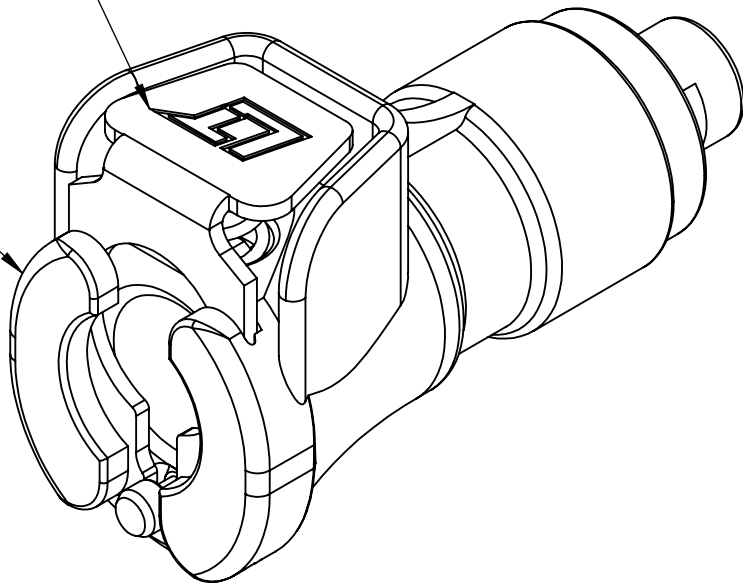


REVISIONS						
SHEET	ZONE	REV.	ECO	DESCRIPTION	DATE	APPROVED
1	ALL	A	50242	PIN, PIN SPRING AND FORMAT DWG FORMAT	1/9/2020	HRC

LATCH HARDWARE,
(STAINLESS STEEL)


SOCKET BODY,
(ACETAL)



NOTES:

- 1. MATERIAL: ACETAL
- 2. COLOR: NATURAL WHITE

FOR REFERENCE ONLY

UNLESS OTHERWISE SPECIFIED:						
DIMENSIONS ARE IN INCHES TOLERANCES: FRACTIONAL ±1/32 ANGULAR, MACH ±0.5 BEND ±2 ONE PLACE DECIMAL ±0.1 TWO PLACE DECIMAL ±0.01 THREE PLACE DECIMAL ±0.005 TWO PLACE DUAL (mm) [±0.12]	DRAWN	RDA	7/10/2017	PART NO: 20AC-S2-01		
	CHECKED	HRC	7/10/2017			
	ENG APPR.	HRC	1/9/20	DESCRIPTION: LinkTech 20AC Series Straight Female, Non-valved, 0625 HB Natural Acetal		
	MFG APPR.	BDB	1/9/20			
PROPRIETARY AND CONFIDENTIAL THE INFORMATION CONTAINED IN THIS DRAWING IS THE SOLE PROPERTY OF LINKTECH LLC. ANY REPRODUCTION OR DISCLOSURE IN PART OR AS A WHOLE WITHOUT THE WRITTEN PERMISSION OF LINKTECH LLC IS STRICTLY PROHIBITED.	Q.A.	LS	1/9/20	SIZE DWG. NO. REV		
	COMMENTS:			C 20AC200461 A		
				SCALE: NTS WEIGHT:		SHEET 1 OF 1