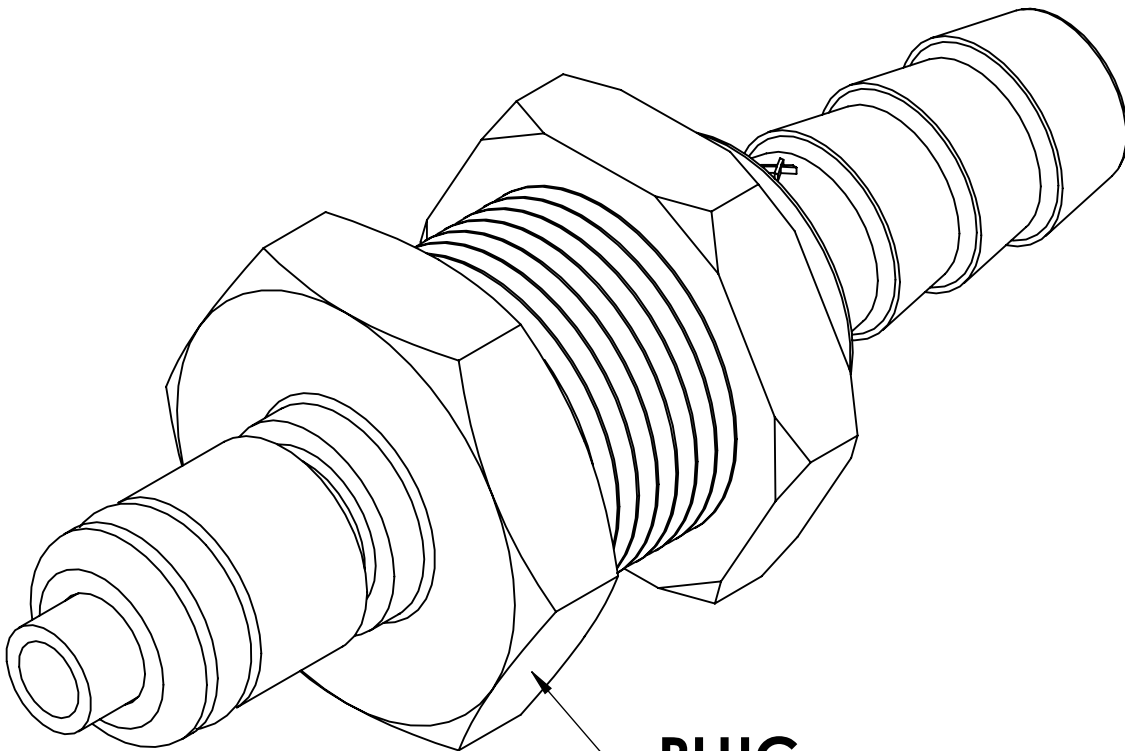
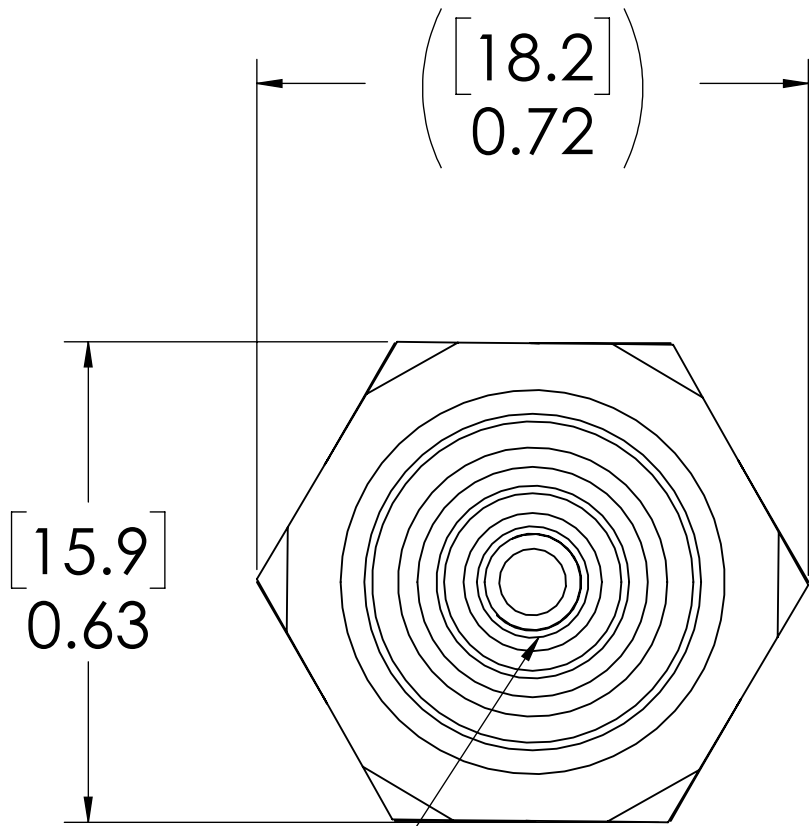


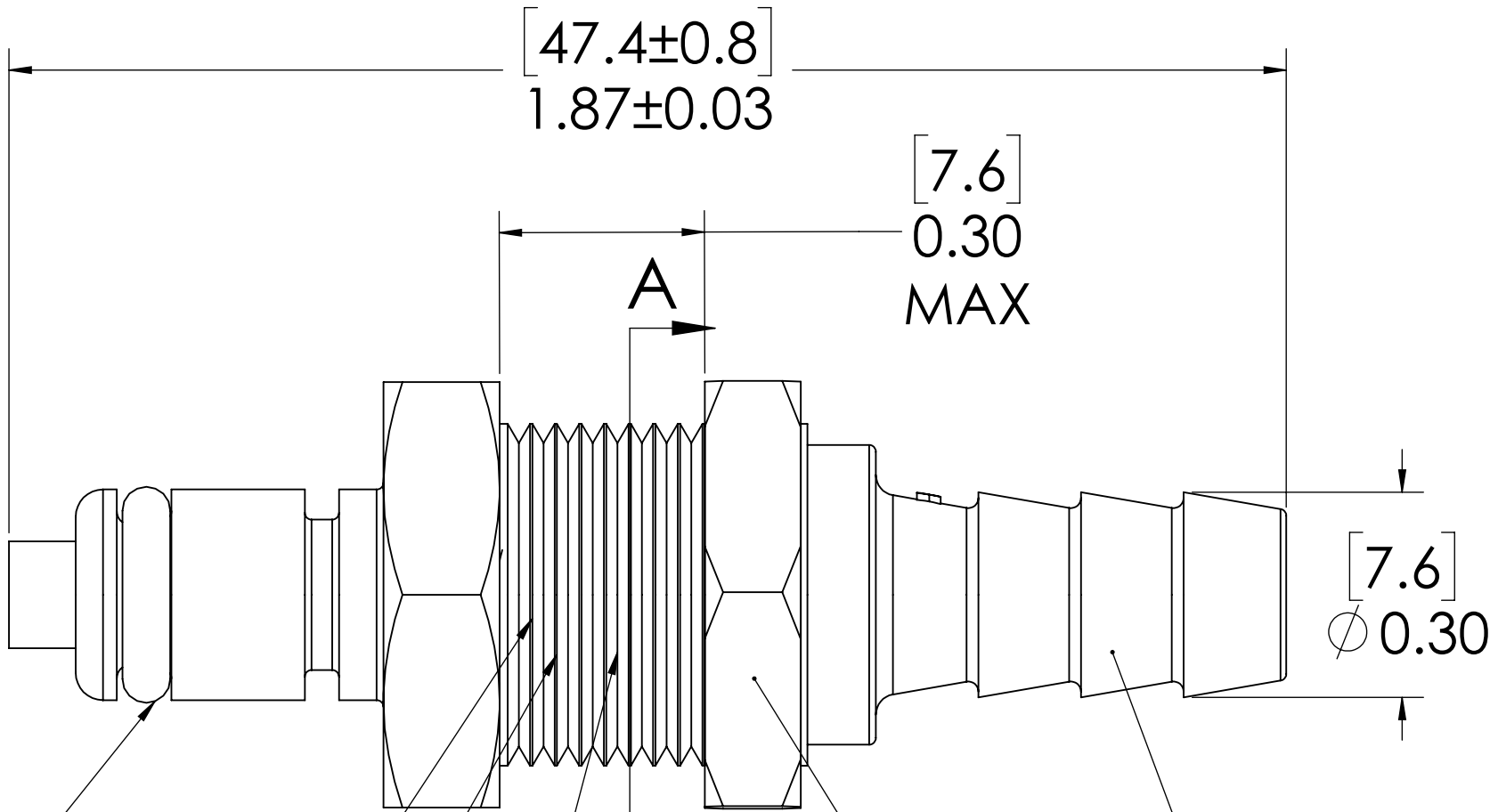
REVISIONS						
SHEET	ZONE	REV.	ECO	DESCRIPTION	DATE	APPROVED
1	ALL	A	50253	UPDATE DWG TO CURRENT FORMAT & STANDARDS	10/4/2018	HRC



**PLUG,
(ACETAL)**



**VALVE,
(ACETAL)**



**O-RING,
(BUNA-N)**

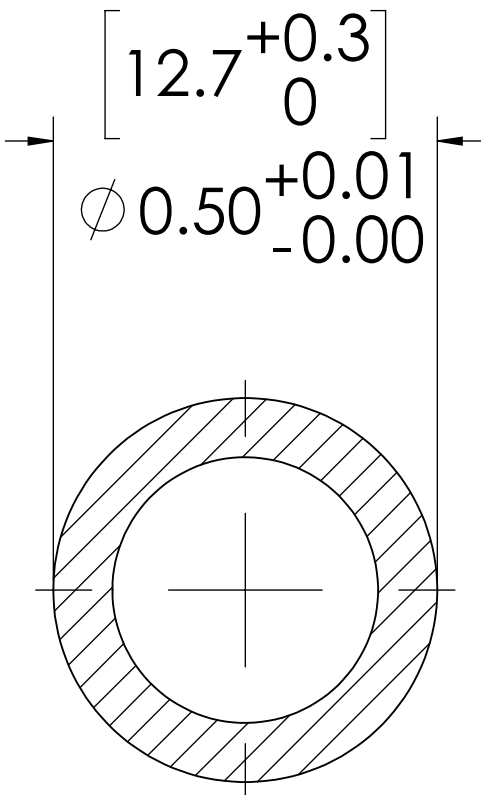
**VALVE SPRING,
INTERNAL
(STAINLESS STEEL)**

**VALVE O-RING,
INTERNAL
(BUNA-N)**

1/2"-24 THREAD

**PANEL NUT,
(BRASS, NICKEL PLATED)
PACKAGED SEPARATELY**

1/4" TUBE ID




**PANEL OPENING
(SECTION A-A)**

NOTES:

1. MATERIAL: ACETAL
2. COLOR: NATURAL WHITE
3. O-RING MATERIAL: BUNA-N
4. O-RINGS LUBRICATED WITH FOOD GRADE SILICONE OIL, 350 CST.

FOR REFERENCE ONLY

UNLESS OTHERWISE SPECIFIED:				NAME		DATE			
DIMENSIONS ARE IN INCHES TOLERANCES: FRACTIONAL ±1/32 ANGULAR, MACH ±0.5 ONE PLACE DECIMAL ±0.1 TWO PLACE DECIMAL ±0.01 THREE PLACE DECIMAL ±0.005 TWO PLACE DECIMAL (mm) ±0.12				DRAWN	ER	10-06-17	10-06-17		
PROPRIETARY AND CONFIDENTIAL THE INFORMATION CONTAINED IN THIS DRAWING IS THE SOLE PROPERTY OF LINKTECH LLC. ANY REPRODUCTION OR DISCLOSURE IN PART OR AS A WHOLE WITHOUT THE WRITTEN PERMISSION OF LINKTECH LLC IS STRICTLY PROHIBITED.				CHECKED	HRC	10-06-17	10-06-17	PART NO: 20ACV-PB3-04	
				ENG APPR.	HRC	10/4/18	10/4/18	DESCRIPTION: LinkTech 20AC Series Panel Mt. Male, Valved, 1/4" HB, Natural Acetal	
				MFG APPR.	BDB	10/4/18	10/4/18	SIZE C	DWG. NO. 20AC200370
				PRODUCTION	LS	10/4/18	10/4/18	REV A	
				COMMENTS:				SCALE: NTS	WEIGHT:
								SHEET 1 OF 1	