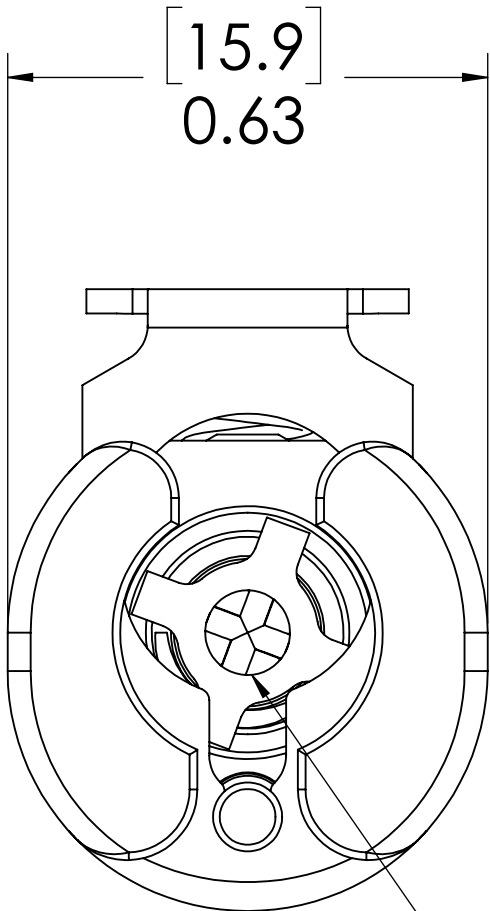
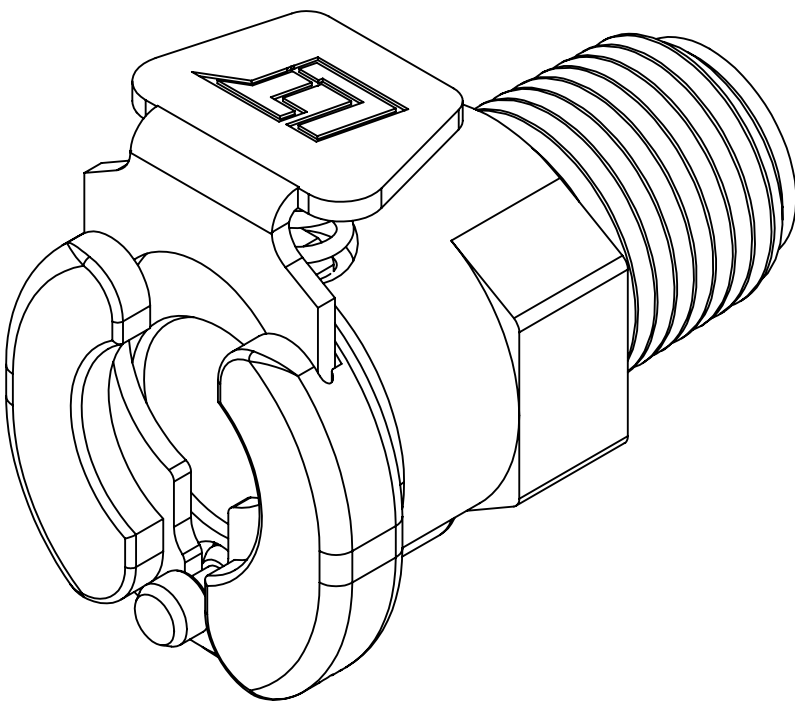
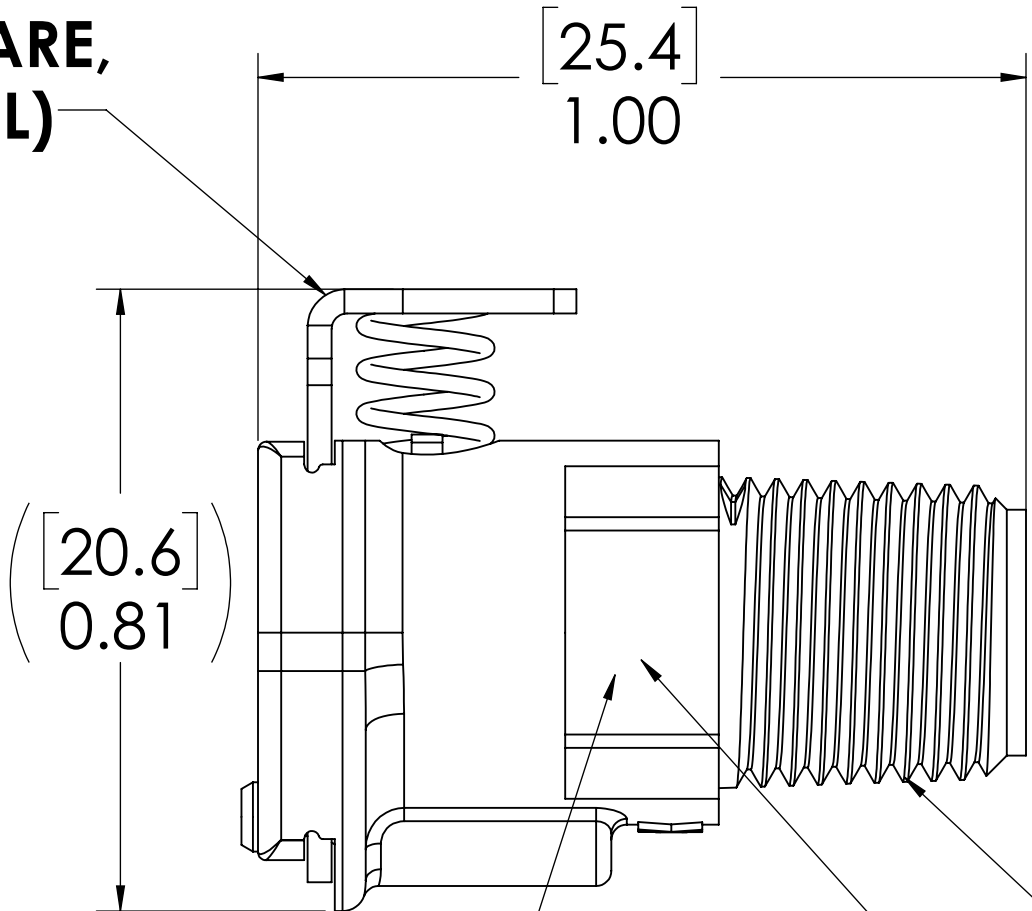


REVISIONS						
SHEET	ZONE	REV.	ECO	DESCRIPTION	DATE	APPROVED
1	ALL	NC	50242	PIN, PIN SPRING & 2017 FORMAT UPDATE	4/28/2018	HRC
ALL	ALL	A	50253	2017 FORMAT UPDATE	5/15/2018	HRC



VALVE,
(ACETAL)

LATCH HARDWARE,
(STAINLESS STEEL)



1/8" NPT
(PIPE THREAD)

VALVE O-RING
INTERNAL
(BUNA-N)

VALVE SPRING,
INTERNAL
(STAINLESS STEEL)

NOTES:

- MATERIAL: ACETAL
- COLOR: NATURAL WHITE
- O-RING MATERIAL: BUNA-N
- O-RINGS LUBRICATED WITH FOOD GRADE SILICONE OIL, 350 CST.

FOR REFERENCE ONLY

UNLESS OTHERWISE SPECIFIED:				LINKTECH™ <small>DRINKING WATER TECHNOLOGY</small>		
DIMENSIONS ARE IN INCHES TOLERANCES: FRACTIONAL ± 1/32 ANGULAR, MACH ± 0.5 ONE PLACE DECIMAL ± 0.1 TWO PLACE DECIMAL ± 0.01 THREE PLACE DECIMAL ± 0.005 TWO PLACE DECIMAL (mm) ± 0.12	DRAWN	CBH	8/24/2017	PART NO: 20ACV-SB1-02		
	CHECKED	HRC	8/24/2017			
	ENG APPR.	HRC	5/15/18	DESCRIPTION: LinkTech 20AC Series Male Thread Female, Valved, 1/8" MNPT, Natural Acetal		
	MFG APPR.	BDB	5/15/18			
PROPRIETARY AND CONFIDENTIAL THE INFORMATION CONTAINED IN THIS DRAWING IS THE SOLE PROPERTY OF LINKTECH LLC. ANY REPRODUCTION OR DISCLOSURE IN PART OR AS A WHOLE WITHOUT THE WRITTEN PERMISSION OF LINKTECH LLC IS STRICTLY PROHIBITED.	PURCHASING	RK	5/15/18	SIZE DWG. NO. REV		
	COMMENTS:			C 20AC200286 A		
				SCALE: NTS	WEIGHT:	SHEET 1 OF 1