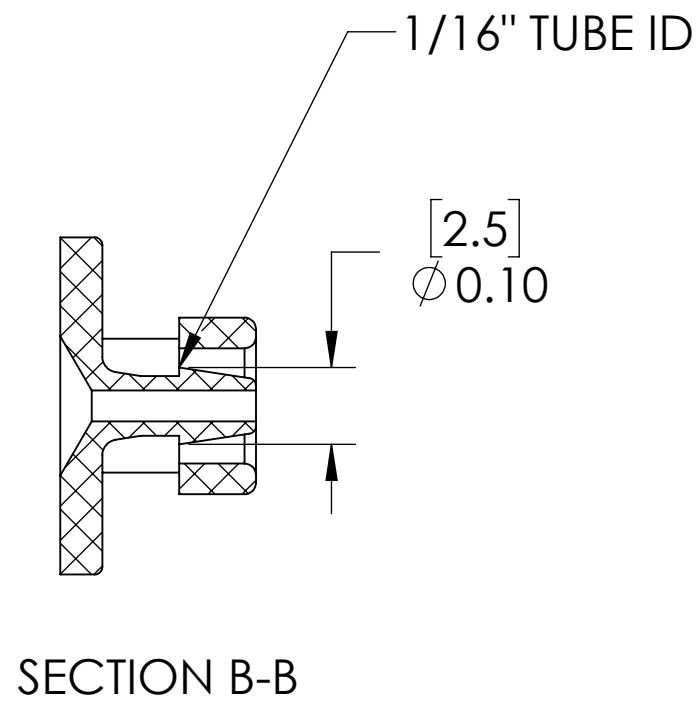
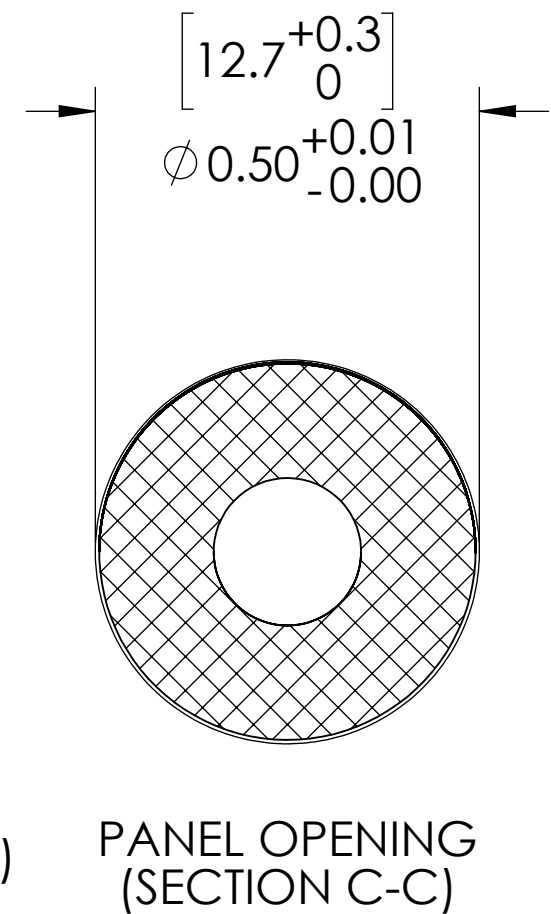
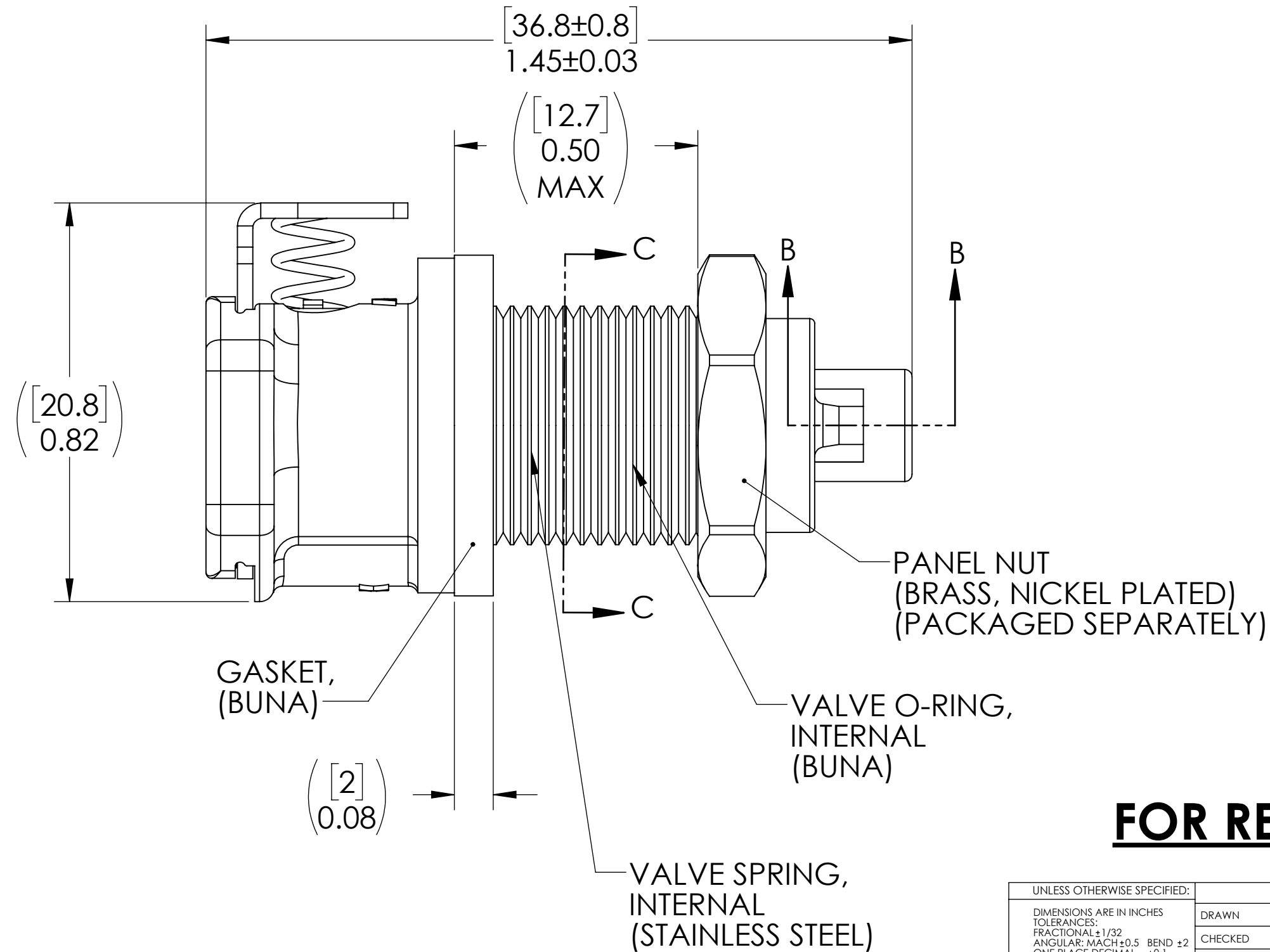
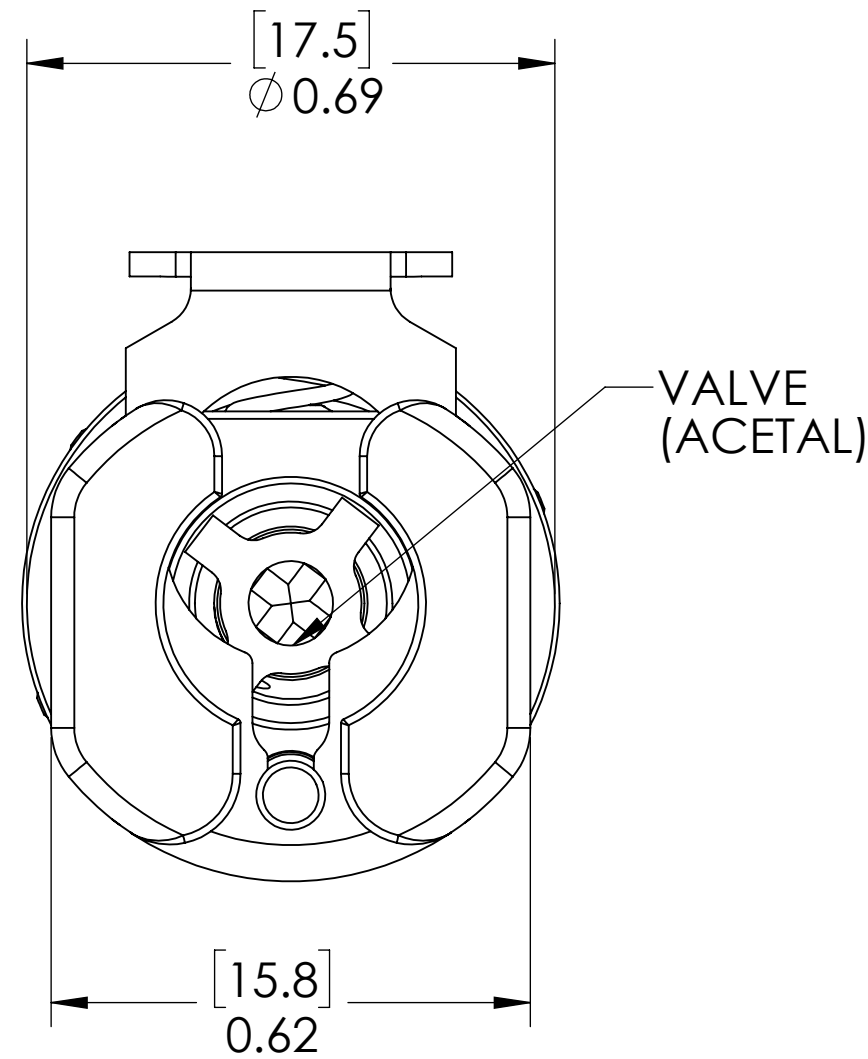
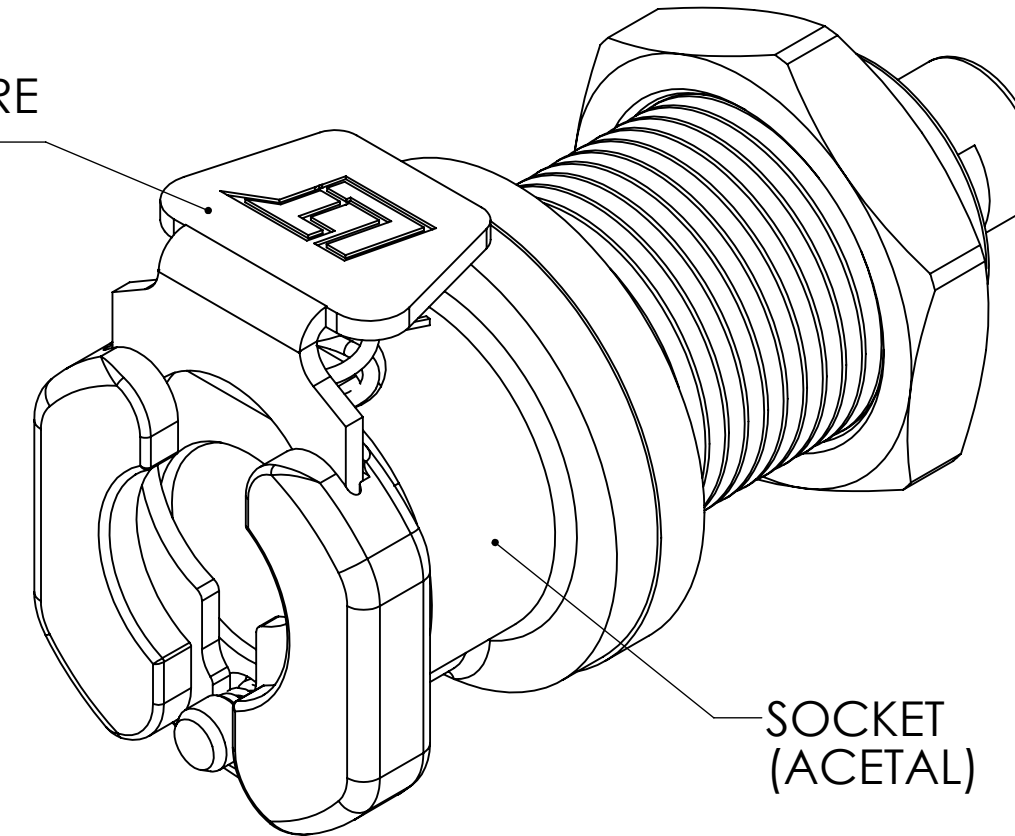


REVISIONS						
SHEET	ZONE	REV.	ECO	DESCRIPTION	DATE	APPROVED
1	E3	A	50162	ADD GASKET TO ASSEMBLY / UPDATE SHEET FORMAT	08/07/2015	HRC
ALL	ALL	B	50242	UPDATED PIN & PIN SPRING AND FORMAT	1/9/2020	HRC



LATCH HARDWARE  
(STAINLESS STEEL)



- NOTES:**
- MATERIAL: ACETAL
  - COLOR: NATURAL WHITE
  - O-RING MATERIAL: BUNA
  - GASKET MATERIAL: BUNA
  - O-RINGS LUBRICATED WITH FOOD GRADE SILICONE OIL, 350 CST.

**FOR REFERENCE ONLY**

<small>UNLESS OTHERWISE SPECIFIED: DIMENSIONS ARE IN INCHES TOLERANCES: FRACTIONAL ± 1/32 ANGULAR: MACH ± 0.5 BEND ± 2 ONE PLACE DECIMAL ± 0.1 TWO PLACE DECIMAL ± 0.01 THREE PLACE DECIMAL ± 0.005 TWO PLACE DUAL (mm) [±0.12]</small>	DRAWN	C.DAVIS	07-23-15	
	CHECKED	HRC	07-23-15	
	ENG APPR.	HRC	1/9/20	
	MFG APPR.	BDB	1/9/20	
PROPRIETARY AND CONFIDENTIAL	Q.A.	LS	1/9/20	<b>PART NO:</b> 20ACV-SB3-01GS  <b>DESCRIPTION:</b> LinkTech 20AC Series Panel Mt. Femal. Valved, 0625 HB, Gasket Seal, Natural Acetal
<small>THE INFORMATION CONTAINED IN THIS DRAWING IS THE SOLE PROPERTY OF LINKTECH LLC. ANY REPRODUCTION OR DISCLOSURE IN PART OR AS A WHOLE WITHOUT THE WRITTEN PERMISSION OF LINKTECH LLC IS STRICTLY PROHIBITED.</small>			<b>SIZE</b> DWG. NO. REV <b>C</b> 20AC200134 <b>A1</b>	
<small>SCALE: NTS WEIGHT: SHEET 1 OF 1</small>				