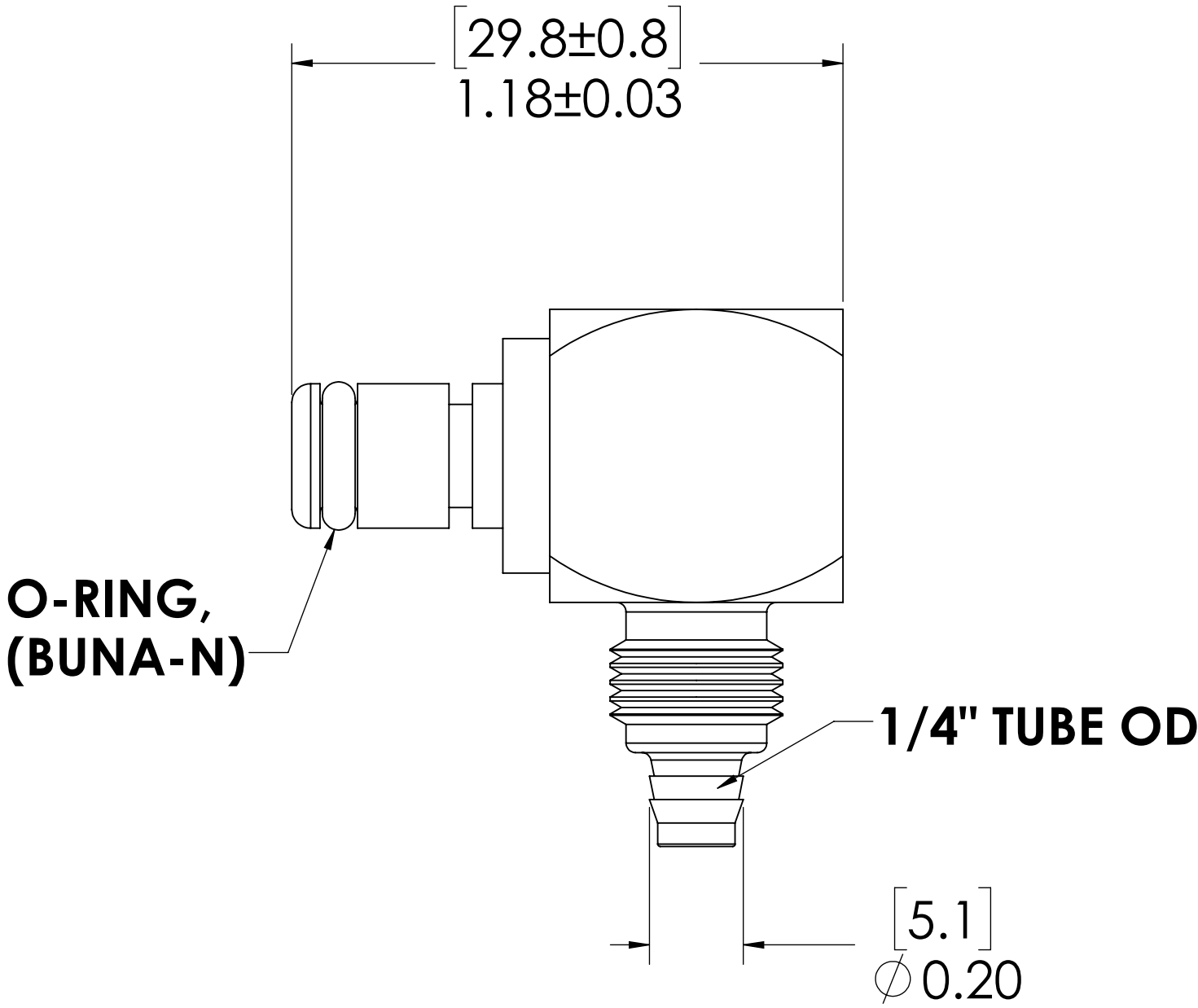
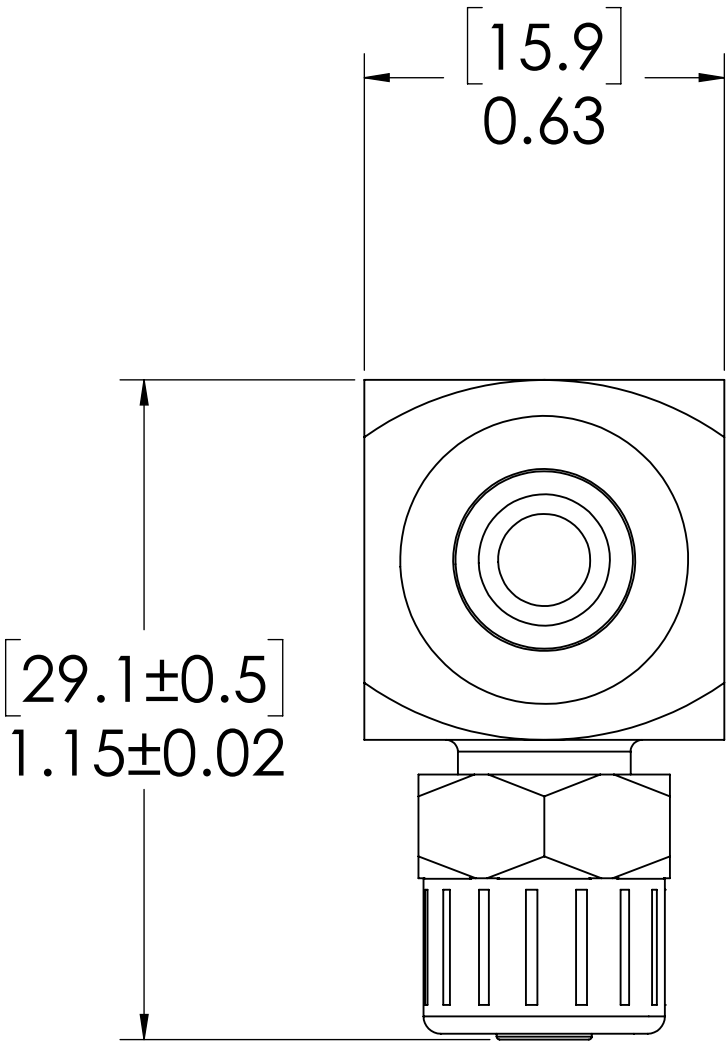
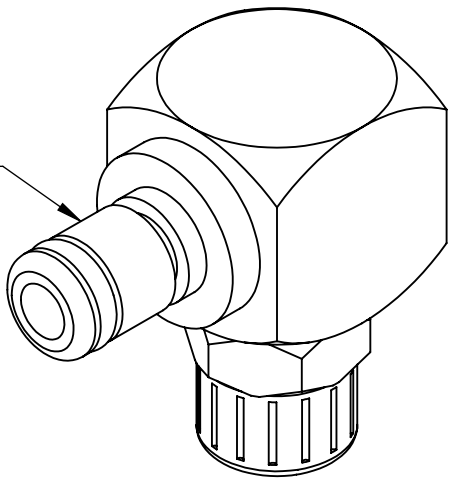


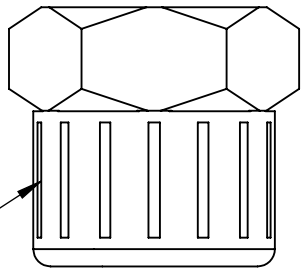
SHEET		ZONE	REV.	ECO	DESCRIPTION	DATE	APPROVED
1		ALL	A	50253	2017 FOTMAT UPDATE	4/20/2018	HRC

PLUG,  
(BRASS, NICKEL  
AND CHROME PLATED)




O-RING,  
(BUNA-N)

PTF NUT  
(BRASS, NICKEL PLATED)



- NOTES:**
- MATERIAL: BRASS
  - FINISH: CHROME
  - O-RING MATERIAL: BUNA-N
  - O-RINGS LUBRICATED WITH FOOD GRADE SILICONE OIL, 350 CST.

**FOR REFERENCE ONLY**

UNLESS OTHERWISE SPECIFIED:		NAME	DATE		
DIMENSIONS ARE IN INCHES TOLERANCES: FRACTIONAL: ±1/32 ANGULAR: MACH ±0.5 BEND ±2 ONE PLACE DECIMAL ±0.1 TWO PLACE DECIMAL ±0.01 THREE PLACE DECIMAL ±0.005 TWO PLACE DUAL (mm) [±0.12]		DRAWN	RDA	1/15/2017	PART NO:  20CB-PB10-04
		CHECKED	HRC	1/15/17	
		ENG APPR.	HRC	4/20/18	
		MFG APPR.	BDB	4/20/18	
PROPRIETARY AND CONFIDENTIAL		PURCHASING	RK	4/20/18	DESCRIPTION:  LinkTech 20CB Series Elbow Male, Non-valved, 250 PTF, Chrome Brass
THE INFORMATION CONTAINED IN THIS DRAWING IS THE SOLE PROPERTY OF LINKTECH LLC. ANY REPRODUCTION OR DISCLOSURE IN PART OR AS A WHOLE WITHOUT THE WRITTEN PERMISSION OF LINKTECH LLC IS STRICTLY PROHIBITED.		COMMENTS:			
		SIZE	DWG. NO.	REV	
		C	20CB200031	A	
		SCALE: NTS		WEIGHT:	SHEET 1 OF 1