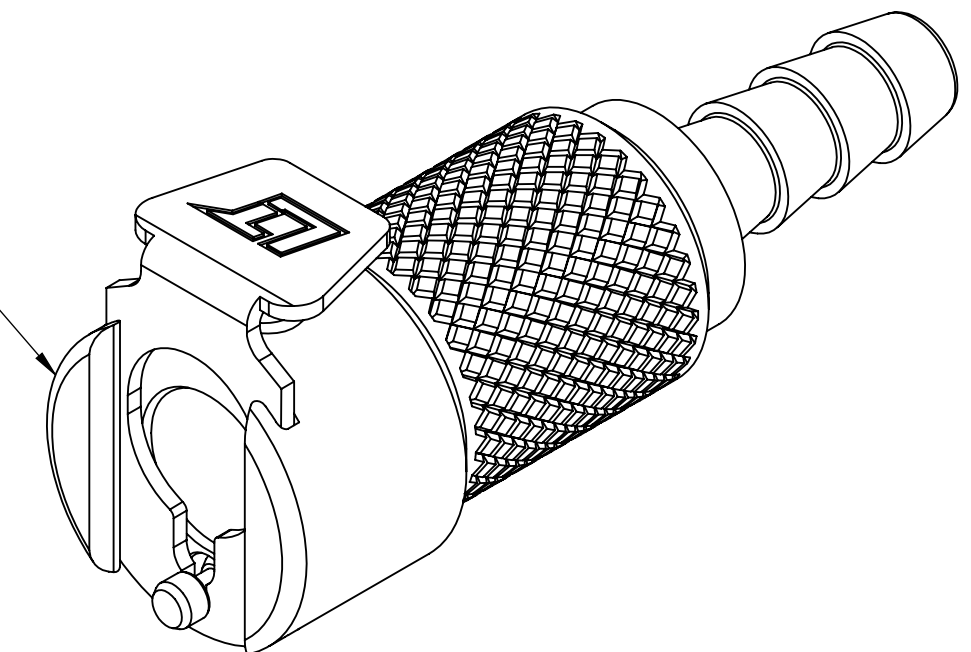
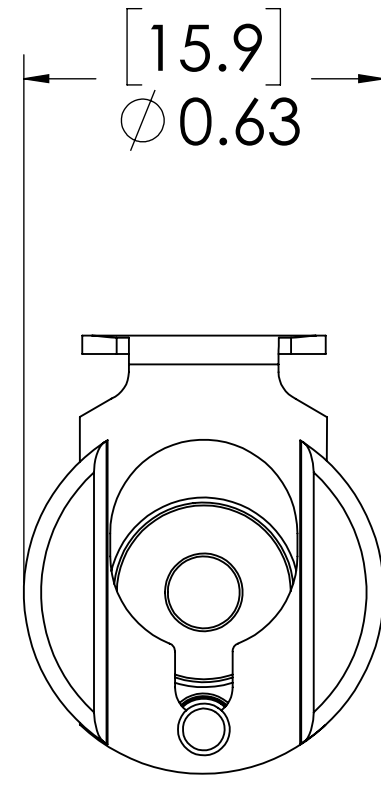
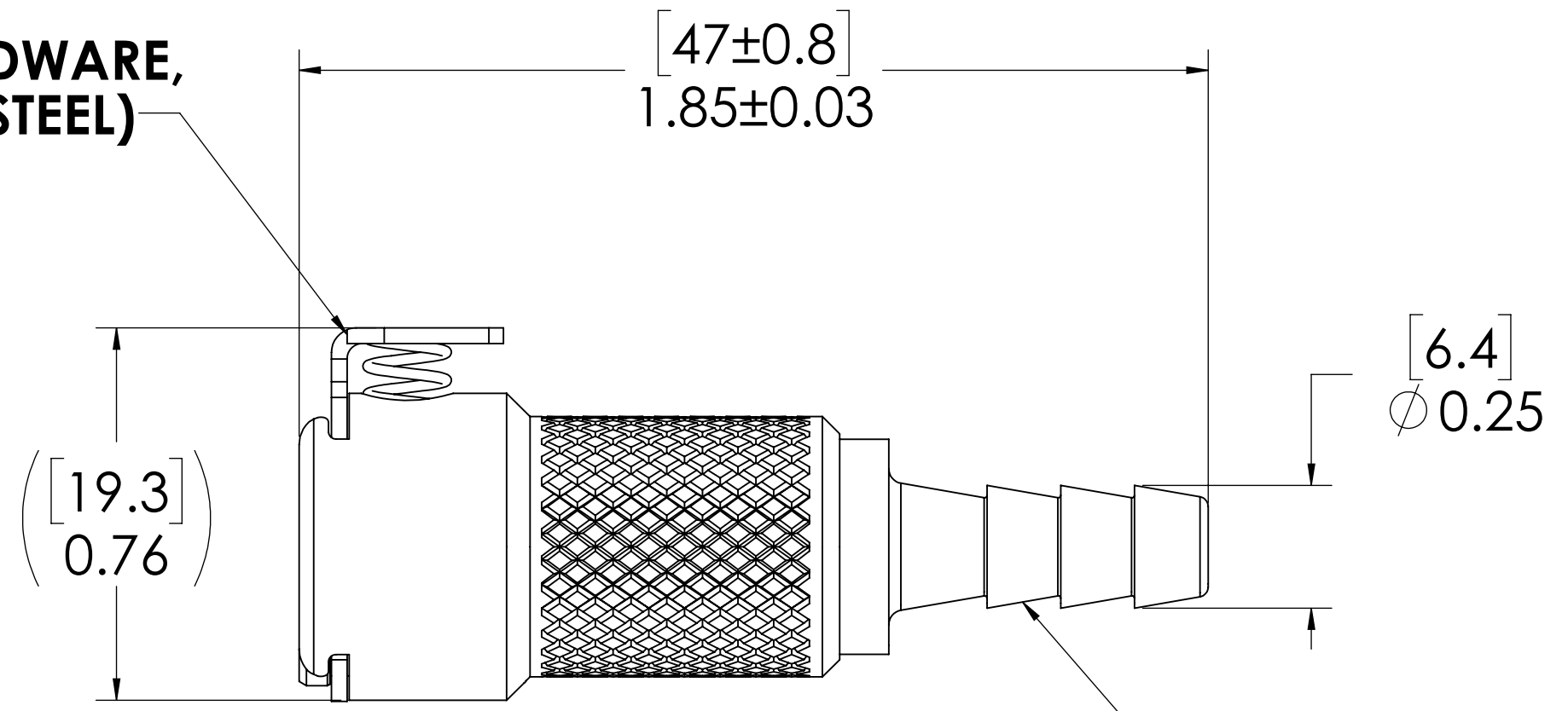


| REVISIONS | | | | | | |
|-----------|------|------|-------|---------------------------------|-----------|----------|
| SHEET | ZONE | REV. | ECO | DESCRIPTION | DATE | APPROVED |
| ALL | ALL | A | 50242 | PIN, PIN SPRING & FORMAT UPDATE | 11/6/2018 | HRC |

**SOCKET,
(BRASS, NICKEL
AND CHROME PLATED)**



**LATCH HARDWARE,
(STAINLESS STEEL)**



FOR REFERENCE ONLY

- NOTES:**
- MATERIAL: BRASS
 - COLOR: CHROME

| | | | | |
|---|-----------|---------|--------------|--|
| <small>UNLESS OTHERWISE SPECIFIED: DIMENSIONS ARE IN INCHES TOLERANCES: FRACTIONAL ± 1/32 ANGULAR, MACH ± 0.5 BEND ± 2 ONE PLACE DECIMAL ± 0.1 TWO PLACE DECIMAL ± 0.01 THREE PLACE DECIMAL ± 0.005 TWO PLACE DUAL (mm) [±0.12]</small> | DRAWN | RDA | 1/22/2018 | |
| | CHECKED | HRC | 1/22/2018 | |
| | ENG APPR. | HRC | 11/6/18 | |
| | MFG APPR. | BDB | 11/6/18 | |
| PRODUCTION | LS | 11/6/18 | | PART NO: 20CB-S2-03 DESCRIPTION: LinkTech 20CB Series Straight Female, Non-valved, 316 HB, Chrome Brass |
| <small>PROPRIETARY AND CONFIDENTIAL THE INFORMATION CONTAINED IN THIS DRAWING IS THE SOLE PROPERTY OF LINKTECH LLC. ANY REPRODUCTION OR DISCLOSURE IN PART OR AS A WHOLE WITHOUT THE WRITTEN PERMISSION OF LINKTECH LLC IS STRICTLY PROHIBITED.</small> | COMMENTS: | | | SIZE DWG. NO. REV C 20CB200046 A |
| SCALE: NTS | | WEIGHT: | SHEET 1 OF 1 | |