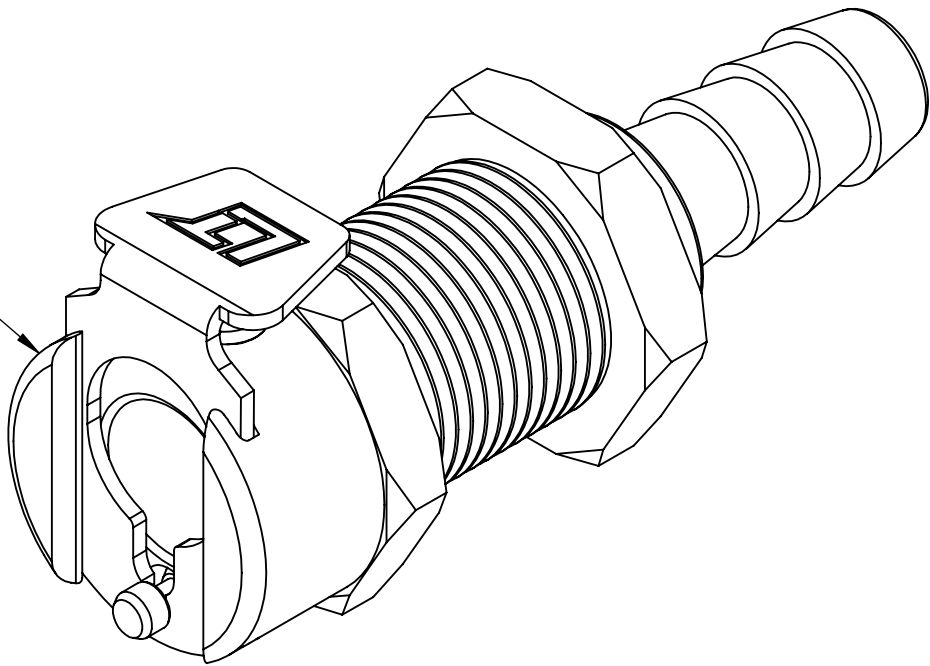
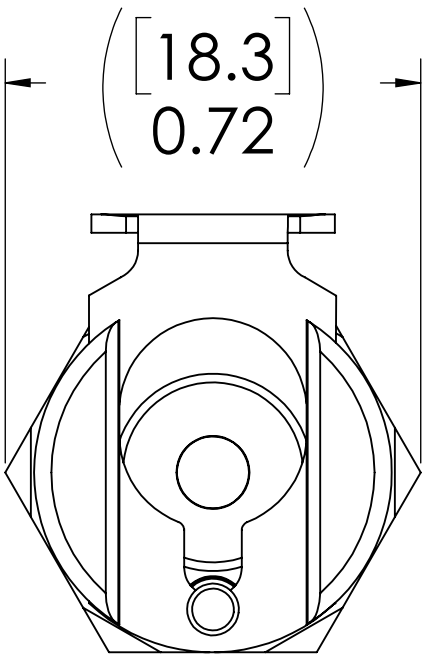
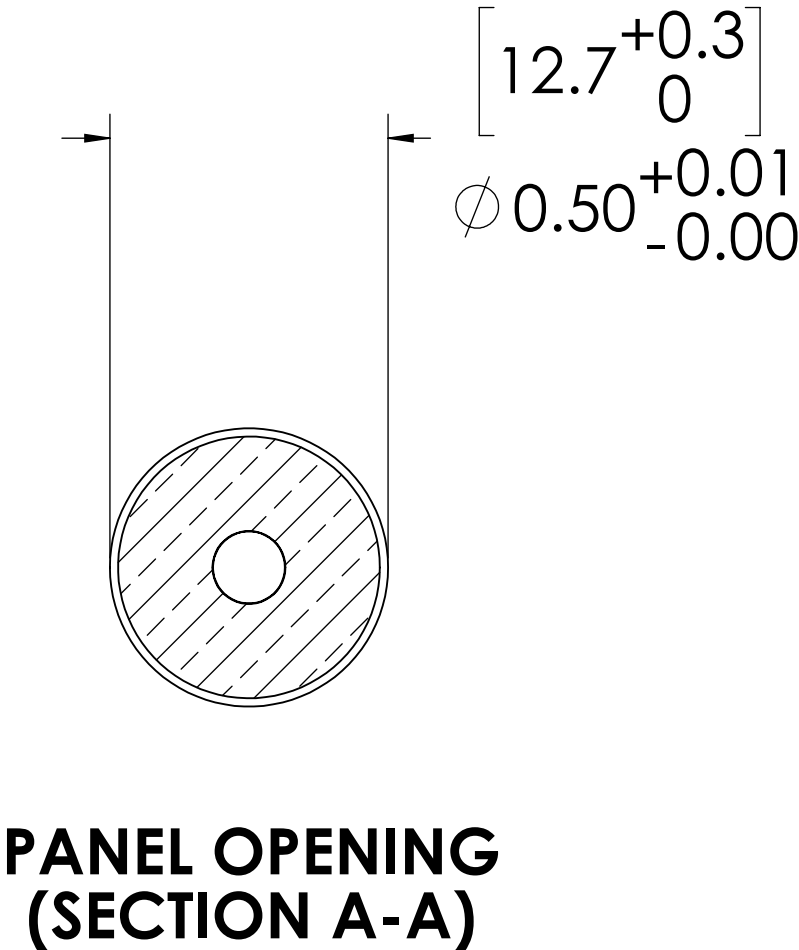
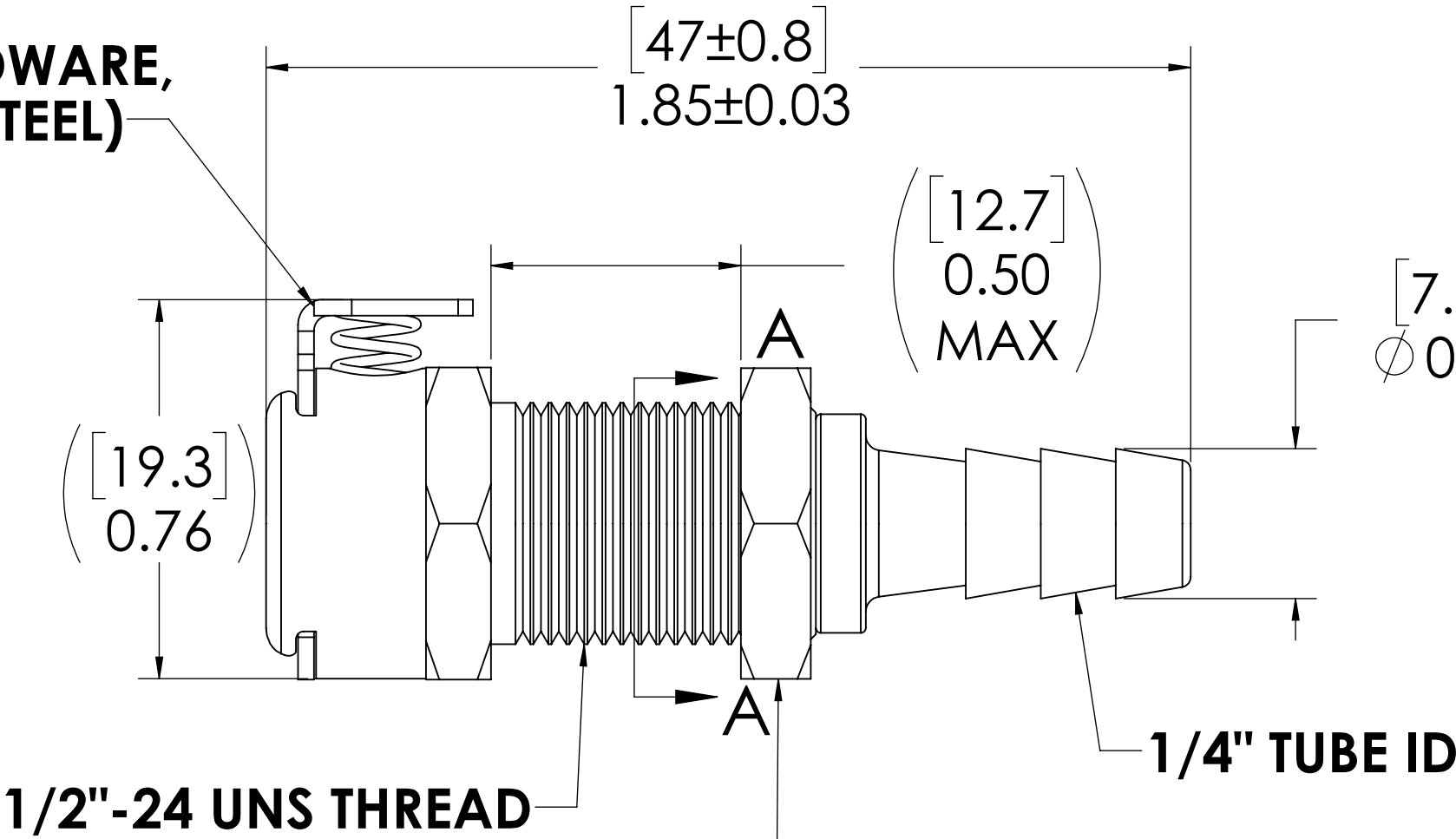


REVISIONS						
SHEET	ZONE	REV.	ECO	DESCRIPTION	DATE	APPROVED
ALL	ALL	A	50242	PIN, PIN SPRING & FORMAT UPDATE	11/6/2018	HRC

SOCKET,
(BRASS, NICKEL
AND CHROME PLATED)




LATCH HARDWARE,
(STAINLESS STEEL)



FOR REFERENCE ONLY

- NOTES:**
- MATERIAL: BRASS
 - FINISH: CHROME

UNLESS OTHERWISE SPECIFIED:		NAME	DATE				
DIMENSIONS ARE IN INCHES TOLERANCES: FRACTIONAL ±1/32 ANGULAR: MACH ±0.5 BEND ±2 ONE PLACE DECIMAL ±0.1 TWO PLACE DECIMAL ±0.01 THREE PLACE DECIMAL ±0.005 TWO PLACE DUAL (mm) [±0.12]	DRAWN	RDA	1/22/2018	PART NO: 20CB-S3-04			
	CHECKED	HRC	1/22/18				
	ENG APPR.	HRC	11/6/18				
	MFG APPR.	BDB	11/6/18				
PROPRIETARY AND CONFIDENTIAL		PRODUCTION	LS	11/6/18	DESCRIPTION: LinkTech 20CB Series Panel Mt. Female, Non-valved, 250 HB, Chrome Brass		
THE INFORMATION CONTAINED IN THIS DRAWING IS THE SOLE PROPERTY OF LINKTECH LLC. ANY REPRODUCTION OR DISCLOSURE IN PART OR AS A WHOLE WITHOUT THE WRITTEN PERMISSION OF LINKTECH LLC IS STRICTLY PROHIBITED.		COMMENTS:					
				SIZE	DWG. NO.	REV	
				C	20CB200079	B	
				SCALE: NTS		WEIGHT:	
				SHEET 1 OF 1			