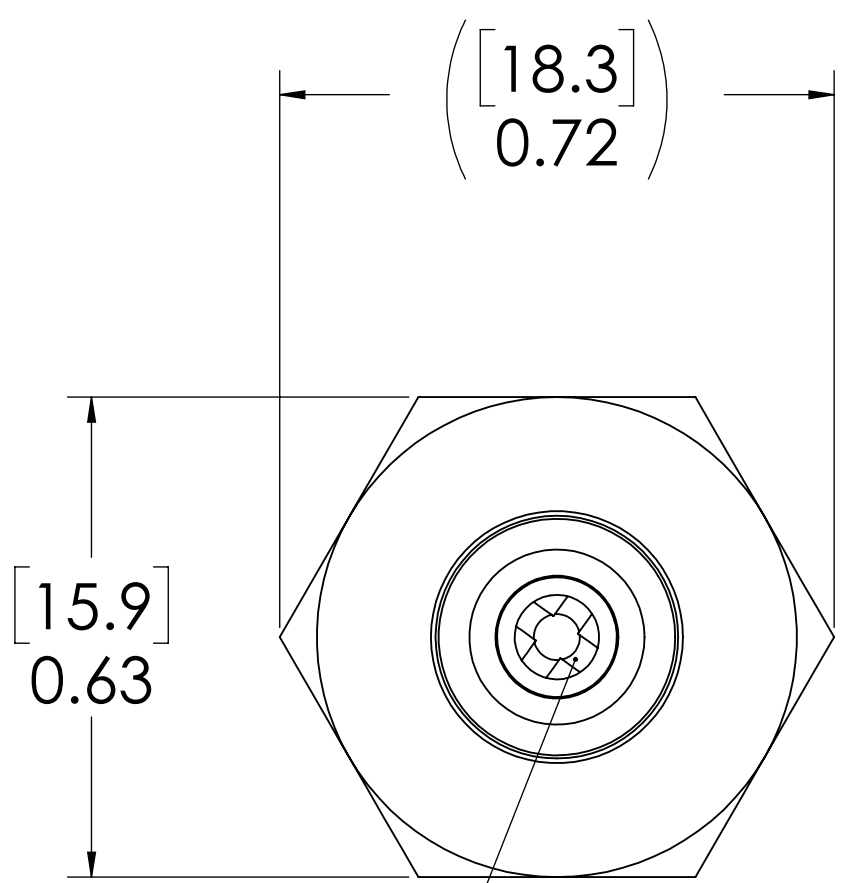
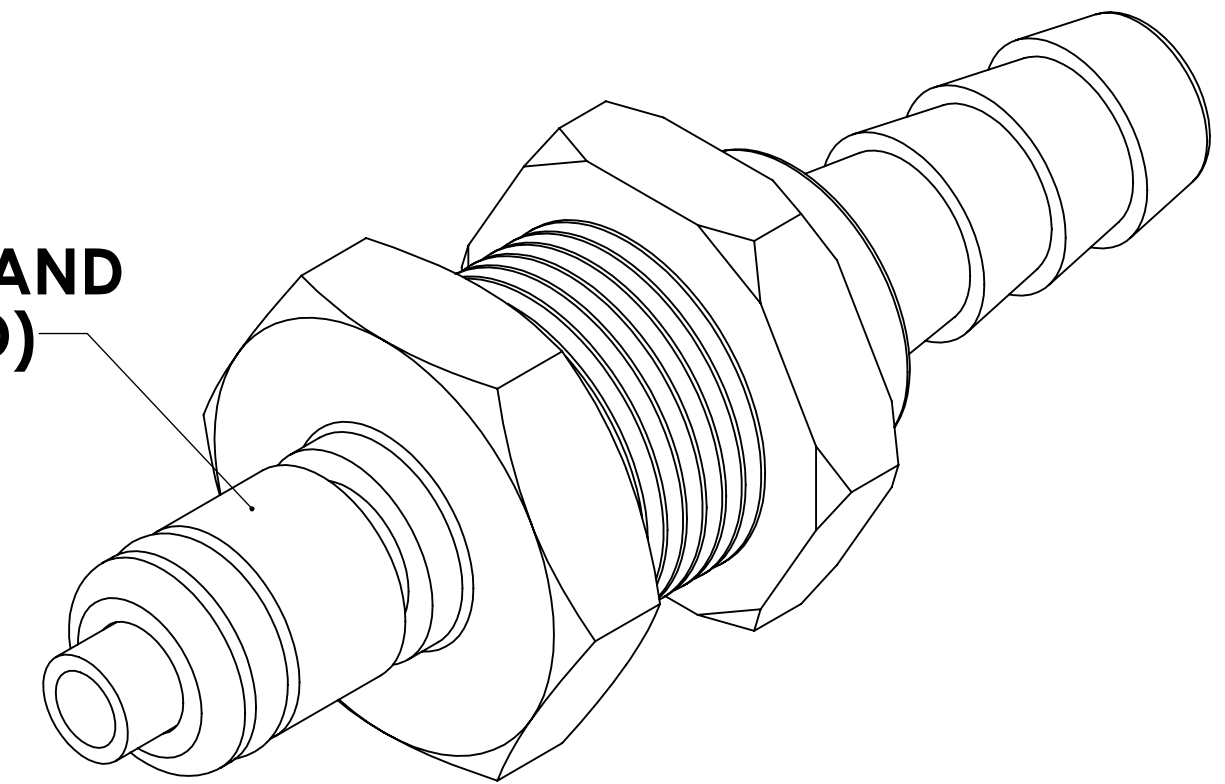
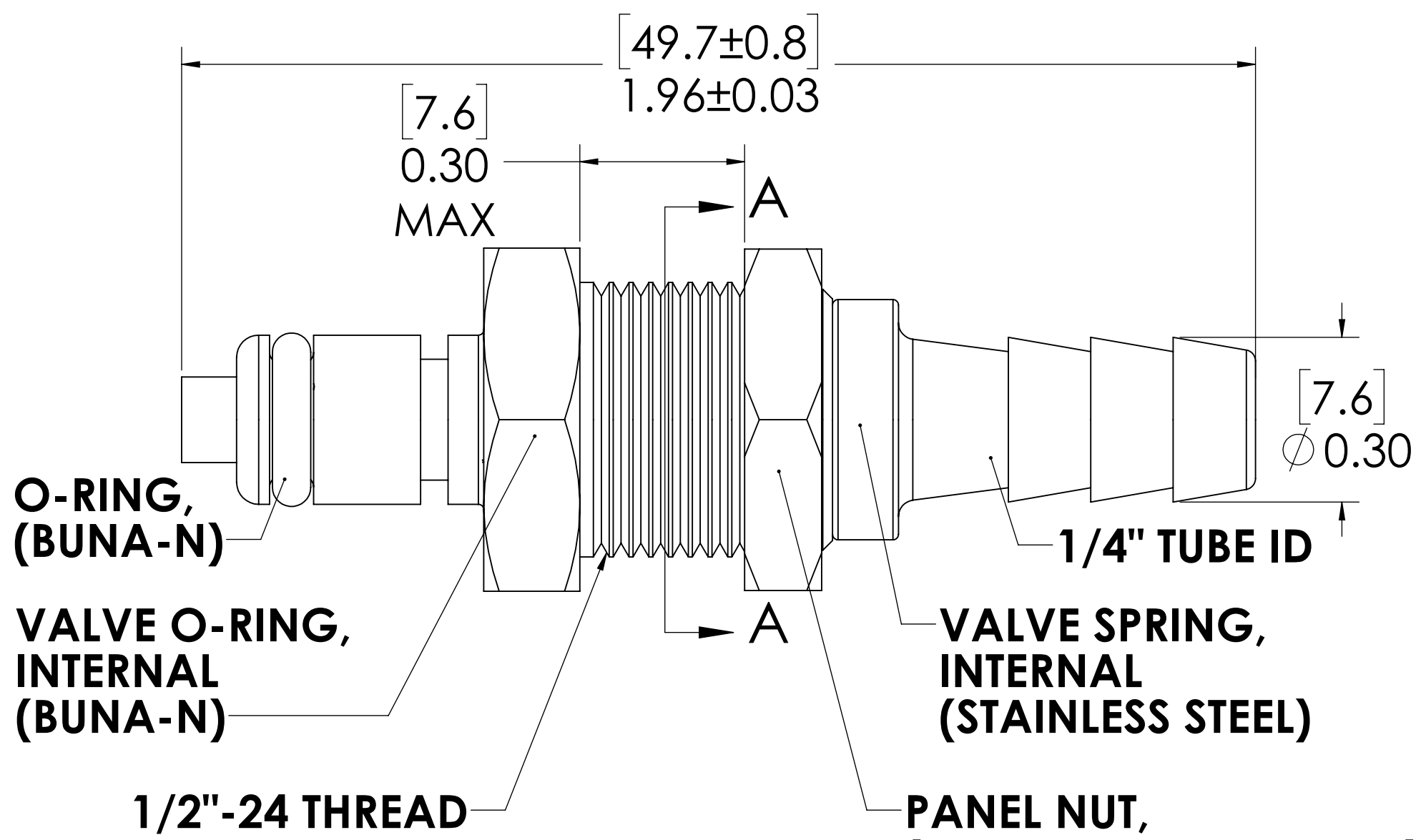


| REVISIONS | | | | | | |
|-----------|------|------|-------|---------------------------------|------------|----------|
| SHEET | ZONE | REV. | ECO | DESCRIPTION | DATE | APPROVED |
| 1 | ALL | A | | CONVERTED TO SOLID WORKS | 4/18/2012 | HRC |
| 1 | E-3 | A | | CORRECTED PANEL NUT PART NUMBER | 4/18/2012 | HRC |
| 1 | ALL | B | 50253 | 2017 FORMAT UPDATE | 10/16/2018 | HRC |

**PLUG,
(BRASS, NICKEL AND
CHROME PLATED)**



**VALVE,
(ACETAL)**



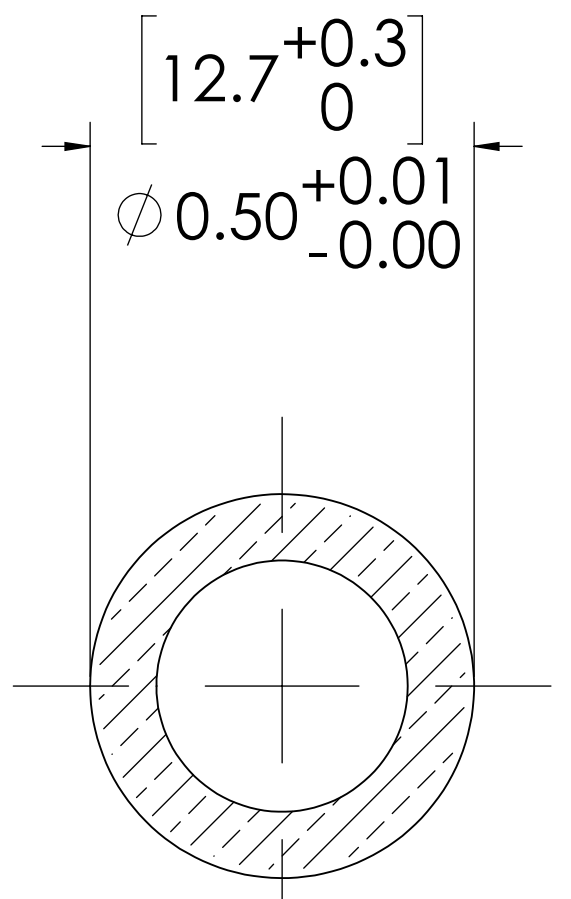
**O-RING,
(BUNA-N)**

**VALVE O-RING,
INTERNAL
(BUNA-N)**

1/2\"-24 THREAD

**VALVE SPRING,
INTERNAL
(STAINLESS STEEL)**

**PANEL NUT,
(BRASS, NICKEL PLATED)
(PACKAGED SEPERATELY)**



**PANEL OPENING
(SECTION A-A)**

NOTES:

1. MATERIAL: BRASS
2. FINISH: CHROME
3. O-RING MATERIAL: BUNA-N
4. O-RINGS LUBRICATED WITH FOOD GRADE SILICONE OIL, 350 CST.

FOR REFERENCE ONLY

| | | | | |
|---|-----------|----------|--------------|--|
| <small>UNLESS OTHERWISE SPECIFIED: DIMENSIONS ARE IN INCHES TOLERANCES: FRACTIONAL ± 1/32 ANGULAR: MACH ± 0.5 BEND ± 2 ONE PLACE DECIMAL ± 0.1 TWO PLACE DECIMAL ± 0.01 THREE PLACE DECIMAL ± 0.005 TWO PLACE DUAL (mm) [±0.12]</small> | DRAWN | HRC | 4/18/12 | |
| | CHECKED | HRC | 4/18/12 | |
| | ENG APPR. | HRC | 10/16/18 | |
| | MFG APPR. | BDB | 10/16/18 | |
| PRODUCTION | LS | 10/16/18 | | PART NO: 20CBV-PB3-04 DESCRIPTION: LinkTech 20CB Series Panel Mt. Male, Valved, 1/4" HB, Chrome Brass |
| <small>PROPRIETARY AND CONFIDENTIAL THE INFORMATION CONTAINED IN THIS DRAWING IS THE SOLE PROPERTY OF LINKTECH LLC. ANY REPRODUCTION OR DISCLOSURE IN PART OR AS A WHOLE WITHOUT THE WRITTEN PERMISSION OF LINKTECH LLC IS STRICTLY PROHIBITED.</small> | | | | SCALE: NTS WEIGHT: REV C 20CB200094 B |
| | | | SHEET 1 OF 1 | |