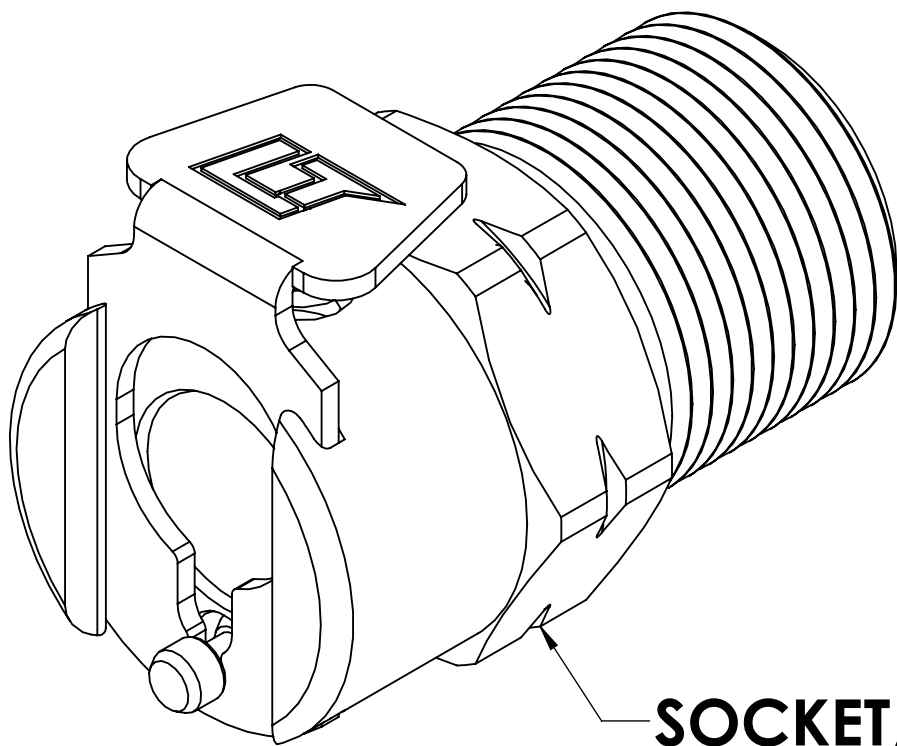
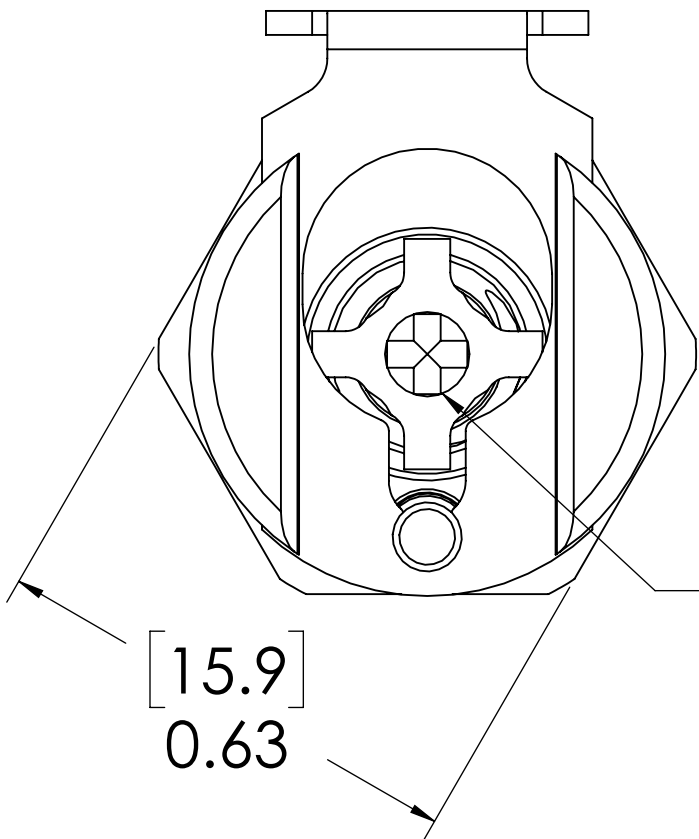


REVISIONS						
SHEET	ZONE	REV.	ECO	DESCRIPTION	DATE	APPROVED
1	ALL	A	50242	INITIAL RELEASE	10/18/2018	HRC

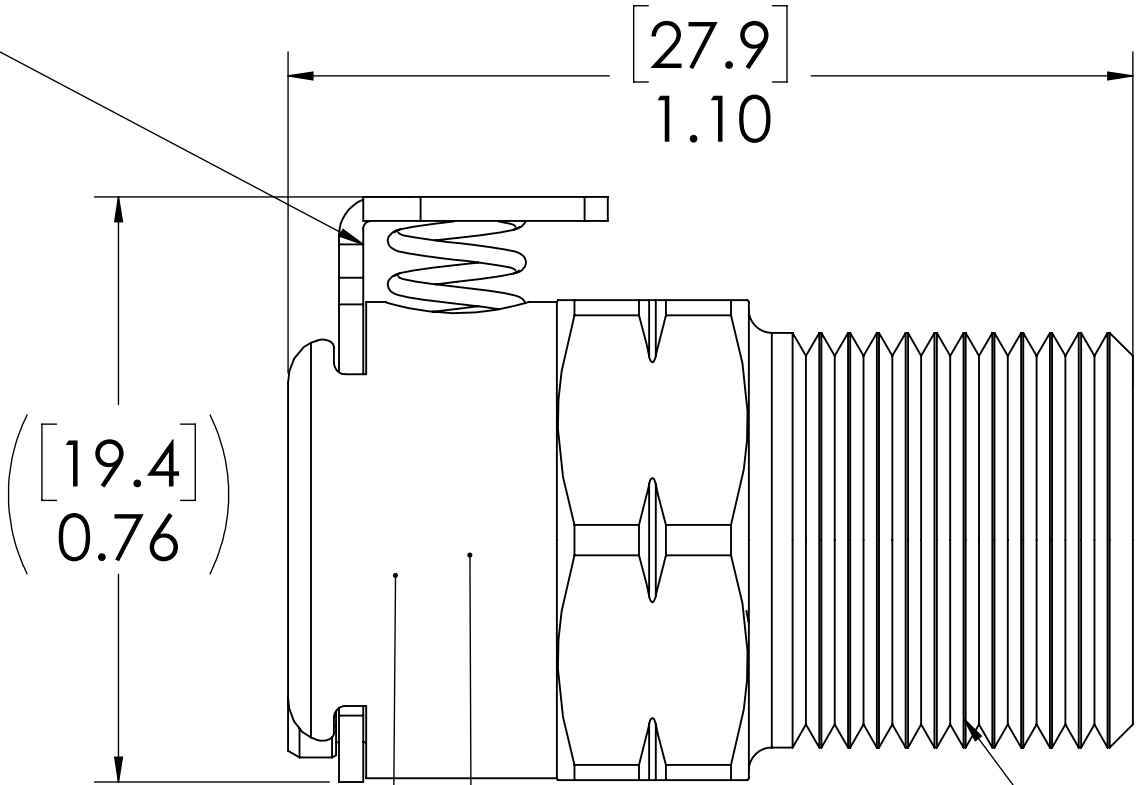


SOCKET,
(BRASS, NICKEL AND
CHROME PLATED)

LATCH HARDWARE,
(STAINLESS STEEL)



VALVE,
(ACETAL)



VALVE SPRING,
INTERNAL
(STAINLESS STEEL)

VALVE O-RING,
INTERNAL
(BUNA-N)

1/4" BSPT
(PIPE THREAD)

NOTES:

- MATERIAL: BRASS
- FINISH: CHROME
- O-RING MATERIAL: BUNA-N
- O-RINGS LUBRICATED WITH FOOD GRADE SILICONE OIL, 350 CST.

FOR REFERENCE ONLY

UNLESS OTHERWISE SPECIFIED:				LINKTECH		
DIMENSIONS ARE IN INCHES TOLERANCES: FRACTIONAL ± 1/32 ANGULAR, MACH ± 0.5 BEND ± 2 ONE PLACE DECIMAL ± 0.1 TWO PLACE DECIMAL ± 0.01 THREE PLACE DECIMAL ± 0.005 TWO PLACE DUAL (mm) [± 0.12]	DRAWN	CGS	1/24/18	PART NO: 20CBV-SB1-04BSPT DESCRIPTION: LinkTech 20CB Series Male Thread Female, Valved, 1/4" BSPT, Chrome Brass		
	CHECKED	HRC	1/24/18			
	ENG APPR.	HRC	10/18/18			
	MFG APPR.	BDB	10/18/18			
PROPRIETARY AND CONFIDENTIAL				PRODUCTION	LS	10/18/18
THE INFORMATION CONTAINED IN THIS DRAWING IS THE SOLE PROPERTY OF LINKTECH LLC. ANY REPRODUCTION OR DISCLOSURE IN PART OR AS A WHOLE WITHOUT THE WRITTEN PERMISSION OF LINKTECH LLC IS STRICTLY PROHIBITED.				COMMENTS:		
				SIZE	DWG. NO.	REV
				C	20CB200191	A
				SCALE: NTS	WEIGHT:	SHEET 1 OF 1