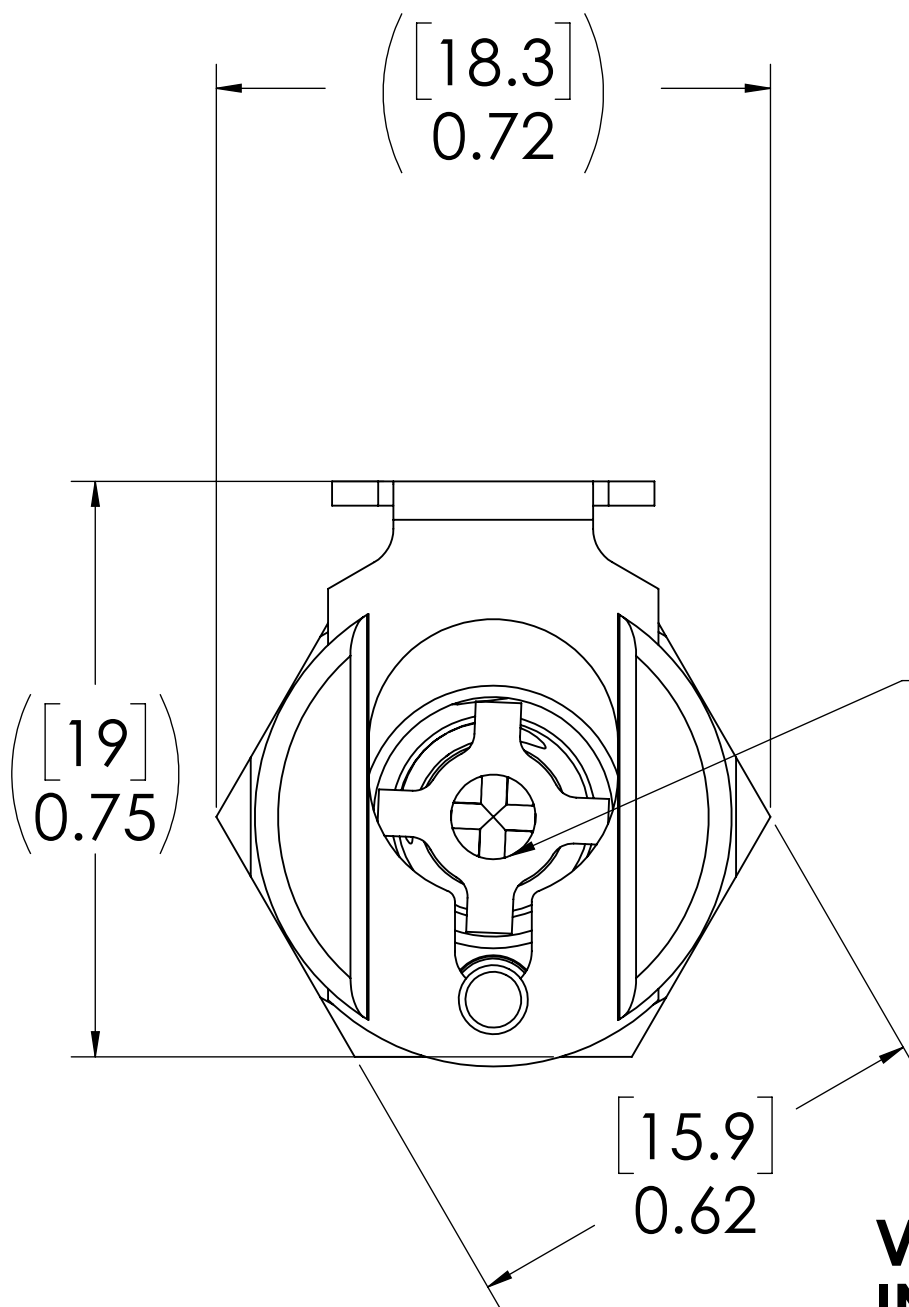
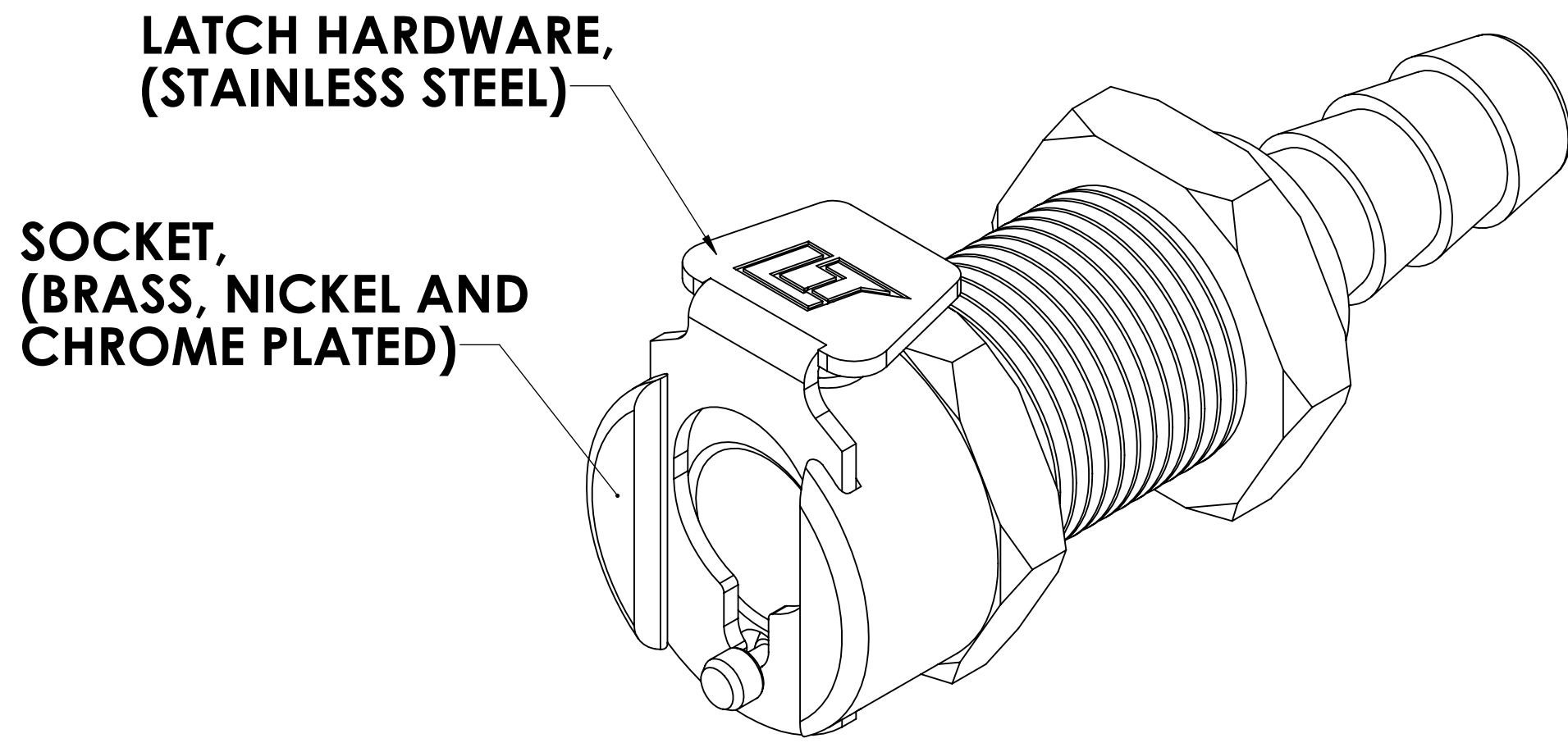
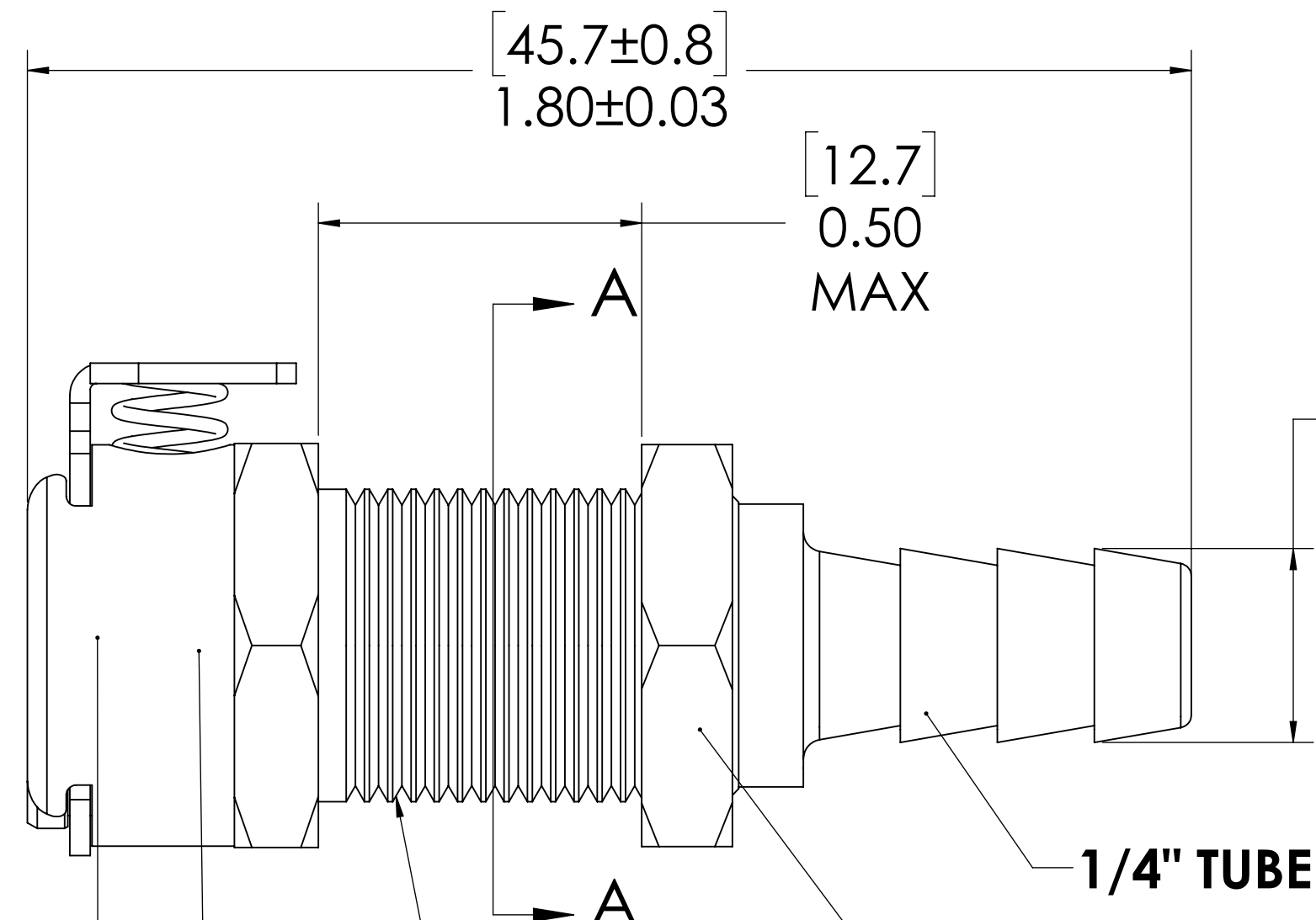


REVISIONS						
SHEET	ZONE	REV.	ECO	DESCRIPTION	DATE	APPROVED
1	ALL	A	50242	INITIAL RELEASE	10/18/2018	HRC



**VALVE,  
(ACETAL)**

**VALVE SPRING,  
INTERNAL  
(STAINLESS STEEL)**

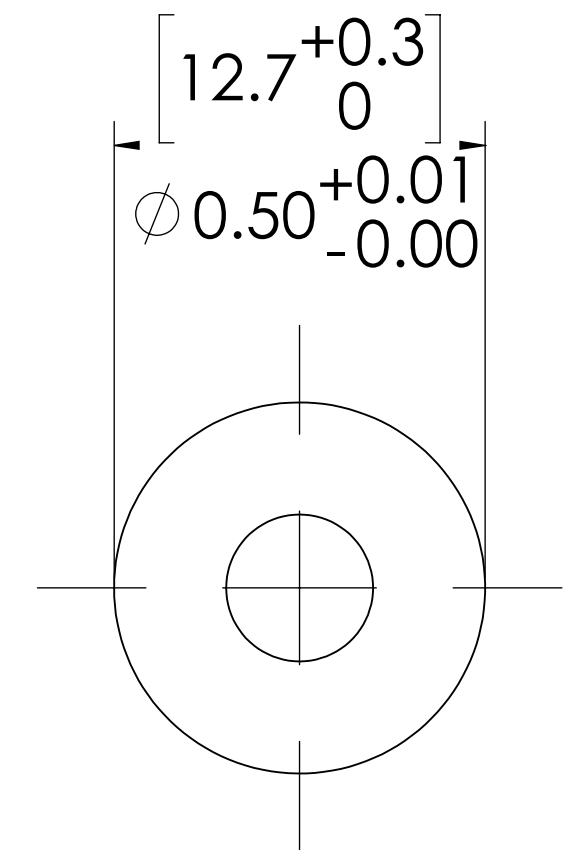


**VALVE O-RING,  
INTERNAL  
(BUNA-N)**

**1/2-24 THREAD**

**PANEL NUT,  
(BRASS, NICKEL PLATED)  
(PACKAGED SEPERATELY)**

**1/4" TUBE ID**



**PANEL OPENING  
(SECTION A-A)**

- NOTES:**
- MATERIAL: BRASS
  - FINISH: CHROME
  - O-RING MATERIAL: BUNA-N
  - O-RINGS LUBRICATED WITH FOOD GRADE SILICONE OIL, 350 CST.

**FOR REFERENCE ONLY**

<small>UNLESS OTHERWISE SPECIFIED: DIMENSIONS ARE IN INCHES TOLERANCES: FRACTIONAL ± 1/32 ANGULAR, MACH ± 0.5 BEND ± 2 ONE PLACE DECIMAL ± 0.1 TWO PLACE DECIMAL ± 0.01 THREE PLACE DECIMAL ± 0.005 TWO PLACE DUAL (mm) [± 0.12]</small>	DRAWN	CGS	1/26/18	
	CHECKED	HRC	1/26/18	
	ENG APPR.	HRC	10/18/18	
	MFG APPR.	BDB	10/18/18	
PRODUCTION	LS	10/18/18		<b>PART NO:</b> 20CBV-SB3-04 <b>DESCRIPTION:</b> LinkTech 20CB Series Panel Mt. Female, Valved, 1/4" HB, Chrome Brass
<small>THE INFORMATION CONTAINED IN THIS DRAWING IS THE SOLE PROPERTY OF LINKTECH LLC. ANY REPRODUCTION OR DISCLOSURE IN PART OR AS A WHOLE WITHOUT THE WRITTEN PERMISSION OF LINKTECH LLC IS STRICTLY PROHIBITED.</small>				<b>SIZE DWG. NO.</b> <b>C 20CB200193</b>
<small>PROPRIETARY AND CONFIDENTIAL</small>				<b>REV</b> <b>A</b>
<small>COMMENTS:</small>				<b>SCALE:</b> NTS <b>WEIGHT:</b> <b>SHEET 1 OF 1</b>