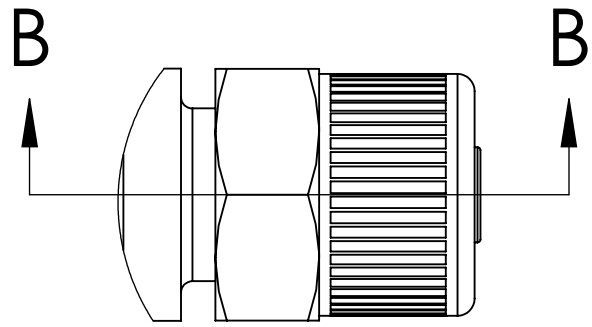
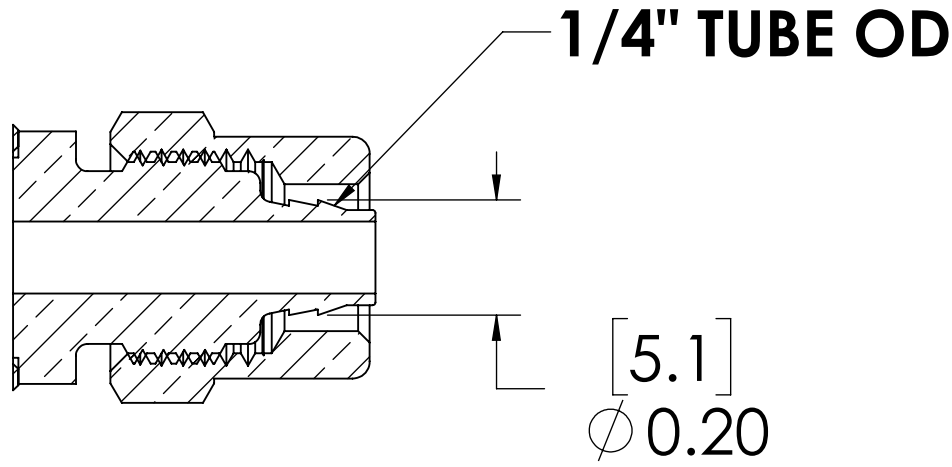


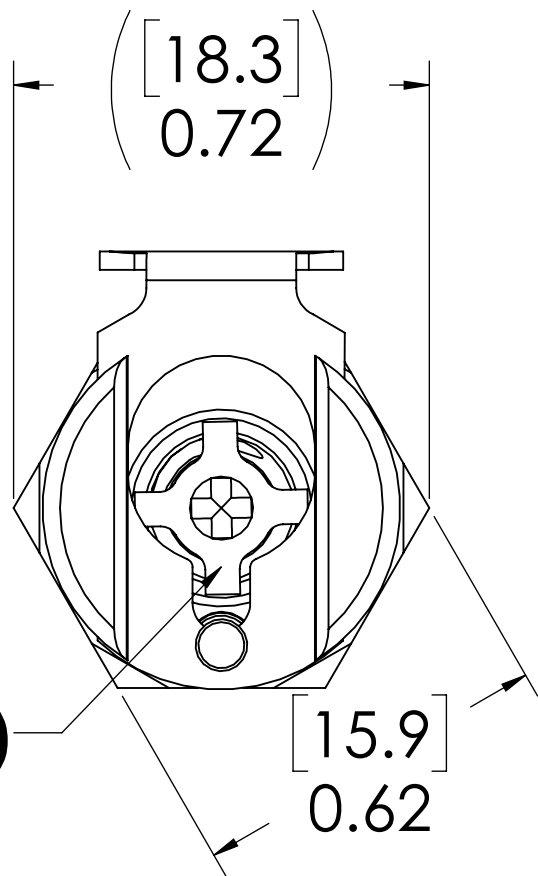
REVISIONS						
SHEET	ZONE	REV.	ECO	DESCRIPTION	DATE	APPROVED
1	ALL	A	50242	PIN, PIN SPRING & 2017 FORMAT UPDATE	6/28/2018	HRC



DETAIL A



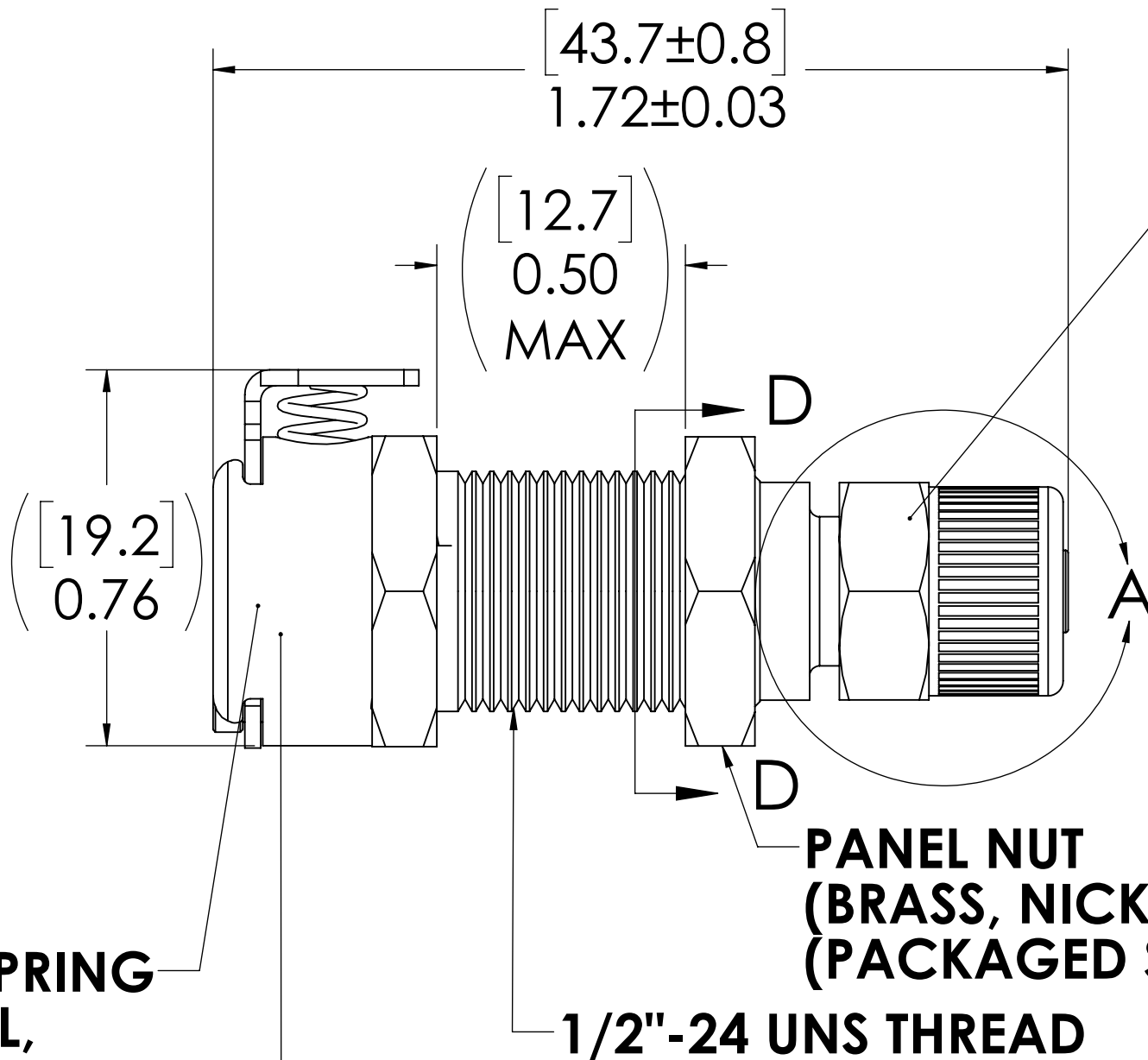
SECTION B-B



VALVE
(ACETAL)

VALVE SPRING
INTERNAL,
(STAINLESS STEEL)

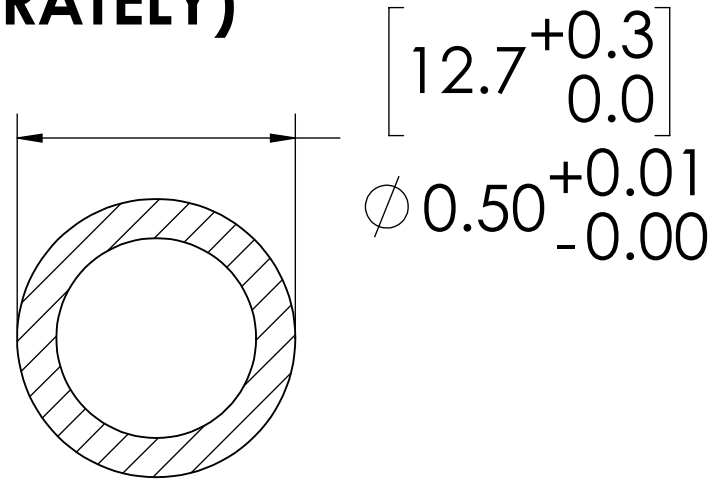
VALVE O-RING
INTERNAL,
(BUNA-N)



PTF NUT
(BRASS, NICKEL PLATED)
(PACKAGED SEPERATELY)

PANEL NUT
(BRASS, NICKEL PLATED)
(PACKAGED SEPERATELY)

1/2"-24 UNS THREAD




PANEL OPENING
(SECTION D-D)

NOTES:

1. MATERIAL: BRASS
2. FINISH: CHROME
3. O-RING MATERIAL: BUNA-N
4. O-RINGS LUBRICATED WITH FOOD GRADE SILICONE OIL, 350 CST.

FOR REFERENCE ONLY

UNLESS OTHERWISE SPECIFIED:		NAME	DATE	 PART NO: 20CBV-SB8-04	
<div>DIMENSIONS ARE IN INCHES TOLERANCES: FRACTIONAL ±1/32 ANGULAR, MACH ±0.5 BEND ±2 ONE PLACE DECIMAL ±0.1 TWO PLACE DECIMAL ±0.01 THREE PLACE DECIMAL ±0.005 TWO PLACE DUAL (mm) [±0.12]</div>		DRAWN	CBH	7/12/2017	DESCRIPTION: LinkTech 20CB Series Panel Mt. Female, Valved, 1/4" PTF, Chrome Brass
		CHECKED	HRC	8/1/17	
		ENG APPR.	HRC	6/28/18	
		MFG APPR.	BDB	6/28/18	
PROPRIETARY AND CONFIDENTIAL		PRODUCTION	LS	6/28/18	SIZE DWG. NO. REV C 20CB200018 A
<div>THE INFORMATION CONTAINED IN THIS DRAWING IS THE SOLE PROPERTY OF LINKTECH LLC. ANY REPRODUCTION OR DISCLOSURE IN PART OR AS A WHOLE WITHOUT THE WRITTEN PERMISSION OF LINKTECH LLC IS STRICTLY PROHIBITED.</div>		COMMENTS:			
				SCALE: NTS WEIGHT: SHEET 1 OF 1	