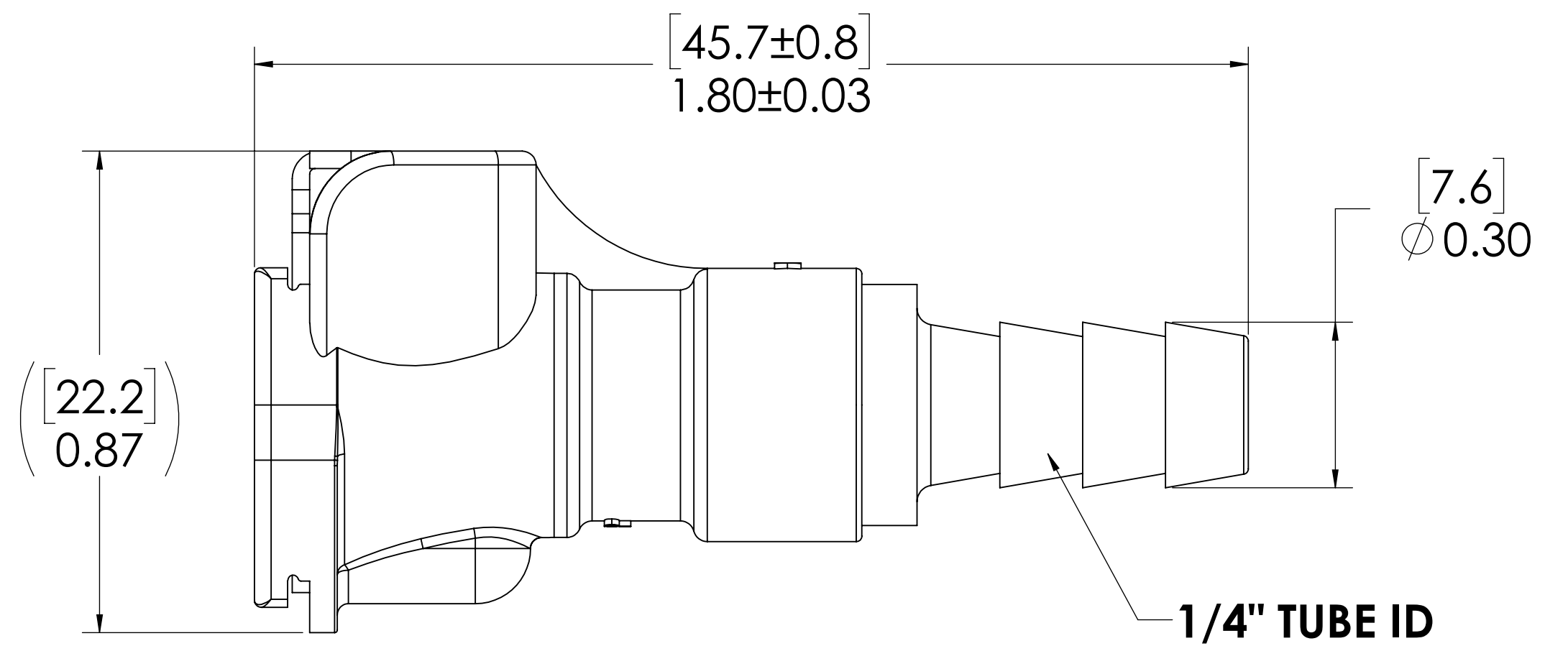
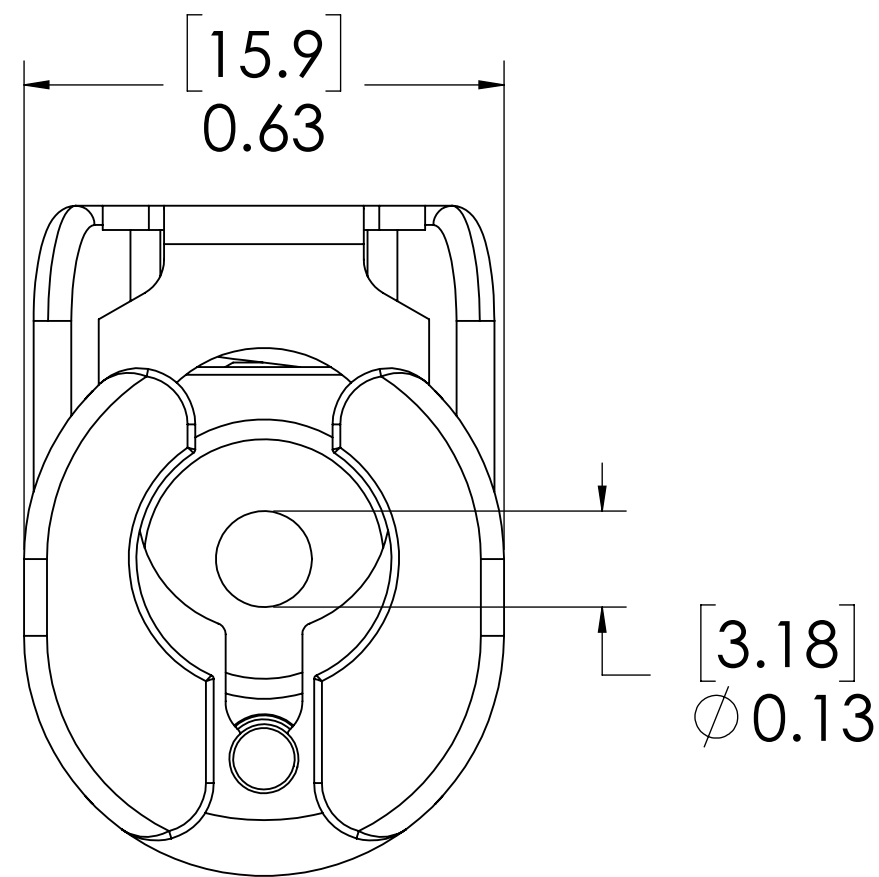
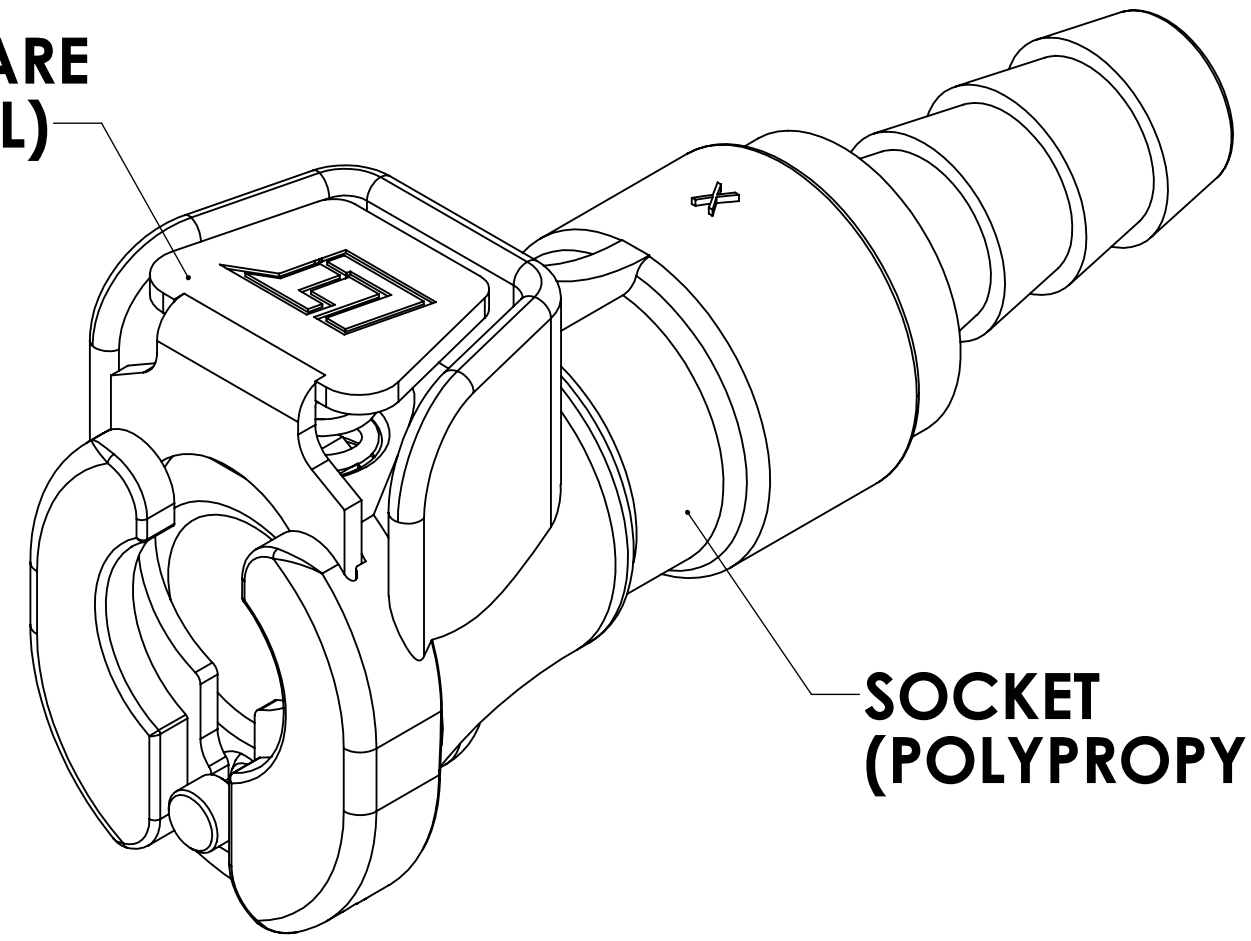


REVISIONS						
SHEET	ZONE	REV.	ECO	DESCRIPTION	DATE	APPROVED
1	ALL	A	50253	UPDATE DWG TO CURRENT FORMAT & STANDARDS	10/30/2018	HRC


**LATCH HARDWARE  
(STAINLESS STEEL)**

**SOCKET  
(POLYPROPYLENE)**



**FOR REFERENCE ONLY**

- NOTES:**
- MATERIAL: POLYPROPYLENE
  - COLOR: GREY

UNLESS OTHERWISE SPECIFIED: DIMENSIONS ARE IN INCHES TOLERANCES: FRACTIONAL ± 1/32 ANGULAR, MACH ± 0.5 BEND ± 2 ONE PLACE DECIMAL ± 0.1 TWO PLACE DECIMAL ± 0.01 THREE PLACE DECIMAL ± 0.005 TWO PLACE DUAL (mm) [± 0.12]	DRAWN	LMP	6/5/2018	 PART NO: <b>20PP-S2-04</b> DESCRIPTION: <b>LinkTech 20PP Series Straight Female,          Non-Valved, 1/4" HB, Polypropylene</b>
	CHECKED	HRC	6/5/2018	
	ENG APPR.	HRC	10/30/18	
	MFG APPR.	BDB	10/30/18	
PRODUCTION	LS	10/30/18		
PROPRIETARY AND CONFIDENTIAL THE INFORMATION CONTAINED IN THIS DRAWING IS THE SOLE PROPERTY OF LINKTECH LLC. ANY REPRODUCTION OR DISCLOSURE IN PART OR AS A WHOLE WITHOUT THE WRITTEN PERMISSION OF LINKTECH LLC IS STRICTLY PROHIBITED.	COMMENTS:			SIZE DWG. NO. REV <b>C 20PP200072 A</b>
SCALE: NTS		WEIGHT:	SHEET 1 OF 1	