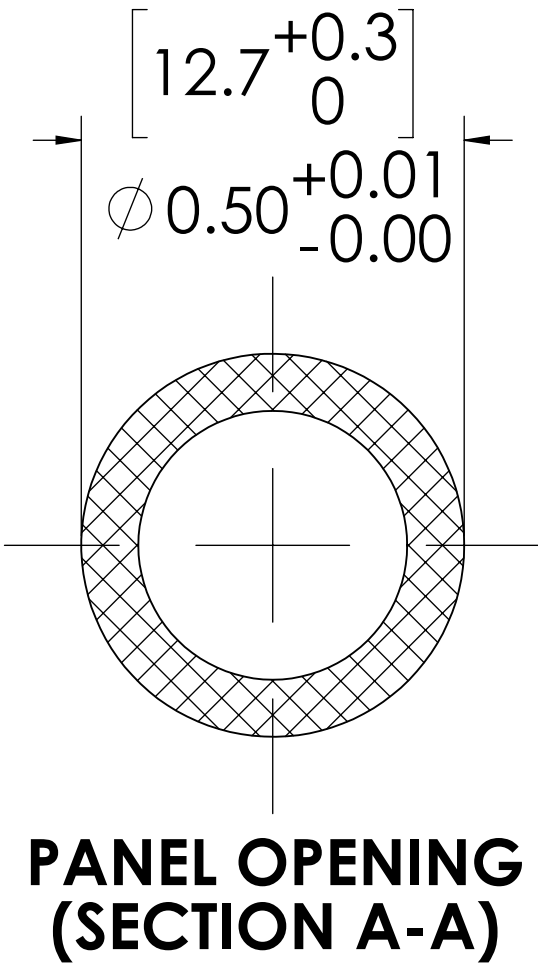
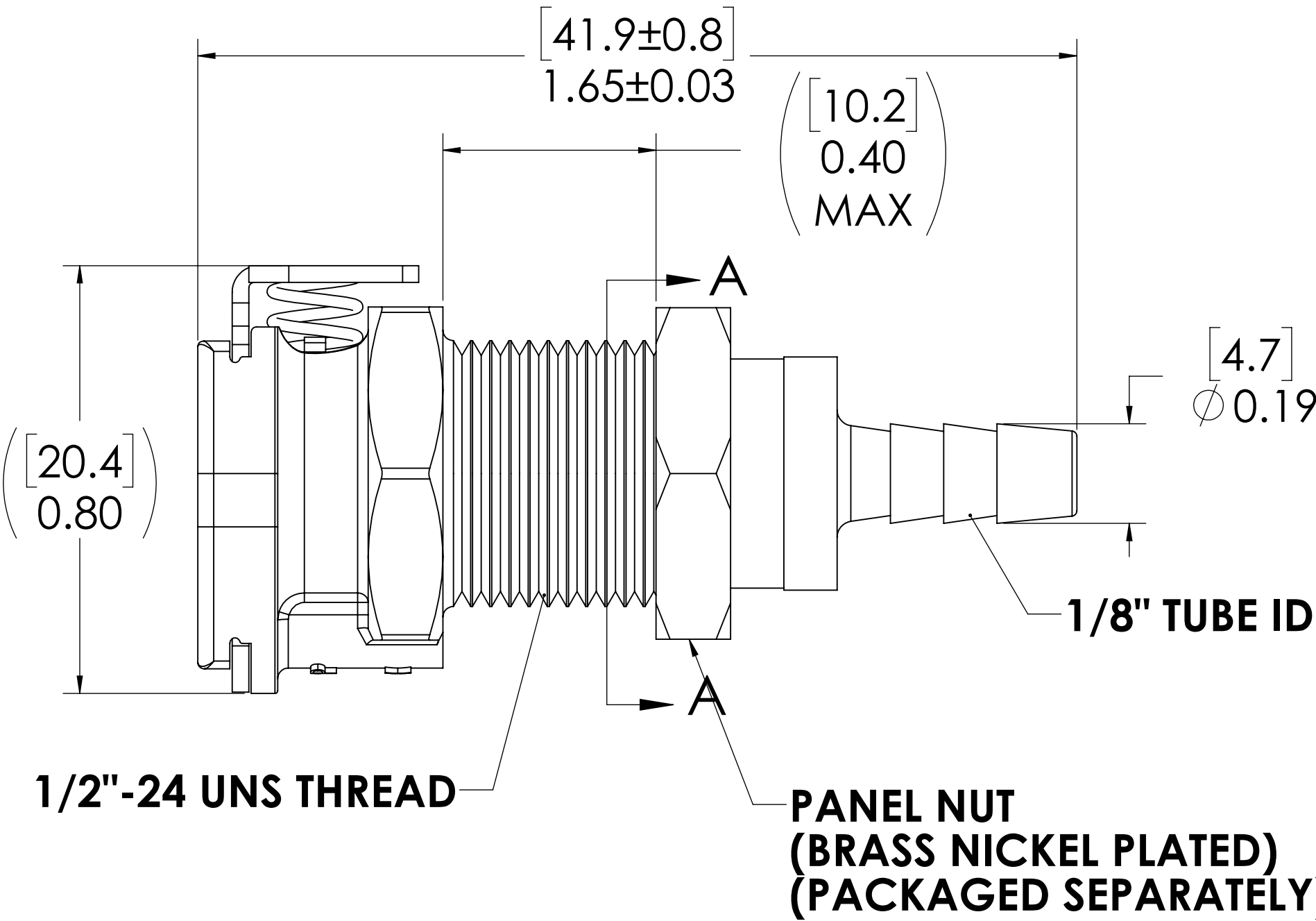
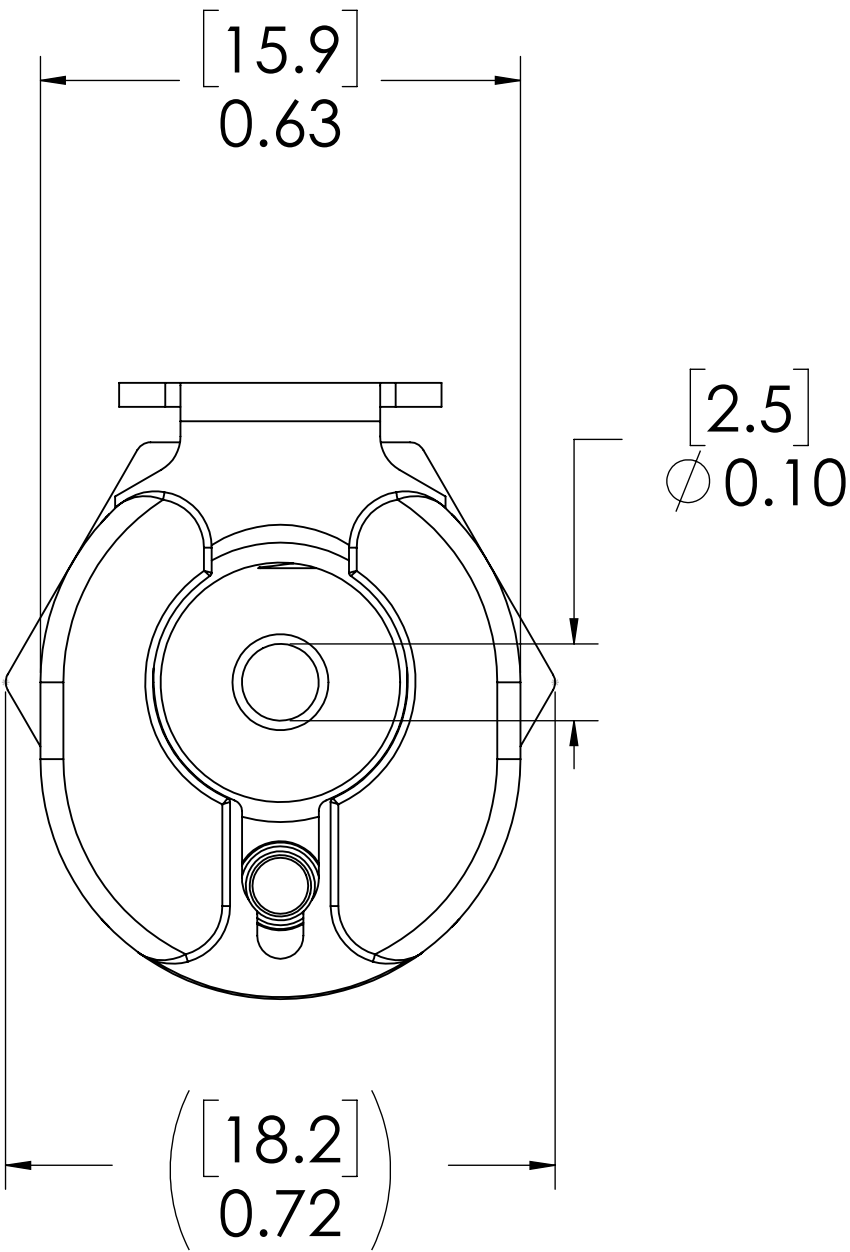


REVISIONS						
SHEET	ZONE	REV.	ECO	DESCRIPTION	DATE	APPROVED
1	ALL	A	50253	UPDATE DWG TO CURRENT FORMAT & STANDARDS	10/30/2018	HRC


LATCH HARDWARE
(STAINLESS STEEL)

SOCKET
(POLYPROPYLENE)



- NOTES:**
- MATERIAL: POLYPROPYLENE
 - COLOR: GREY

FOR REFERENCE ONLY

UNLESS OTHERWISE SPECIFIED:				NAME		DATE		
DIMENSIONS ARE IN INCHES TOLERANCES: FRACTIONAL ±1/32 ANGULAR, MACH ±0.5 BEND ±2 ONE PLACE DECIMAL ±0.1 TWO PLACE DECIMAL ±0.01 THREE PLACE DECIMAL ±0.005 TWO PLACE DUAL (mm) ±0.12				DRAWN	LMP	6/6/2018		
PROPRIETARY AND CONFIDENTIAL THE INFORMATION CONTAINED IN THIS DRAWING IS THE SOLE PROPERTY OF LINKTECH LLC. ANY REPRODUCTION OR DISCLOSURE IN PART OR AS A WHOLE WITHOUT THE WRITTEN PERMISSION OF LINKTECH LLC IS STRICTLY PROHIBITED.				CHECKED	XXX	6/6/2018	PART NO: 20PP-S3-02	
				ENG APPR.	HRC	10/30/18	DESCRIPTION: LinkTech 20PP Series, Panel Mt. Female, Non-Valved, 1/4" HB, Polypropylene	
				MFG APPR.	BDB	10/30/18	SIZE C	DWG. NO. 20PP200085
				PRODUCTION COMMENTS:	LS	10/30/18	REV A	
				SCALE: NTS		WEIGHT:	SHEET 1 OF 1	