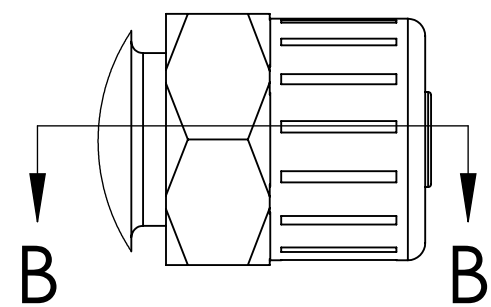
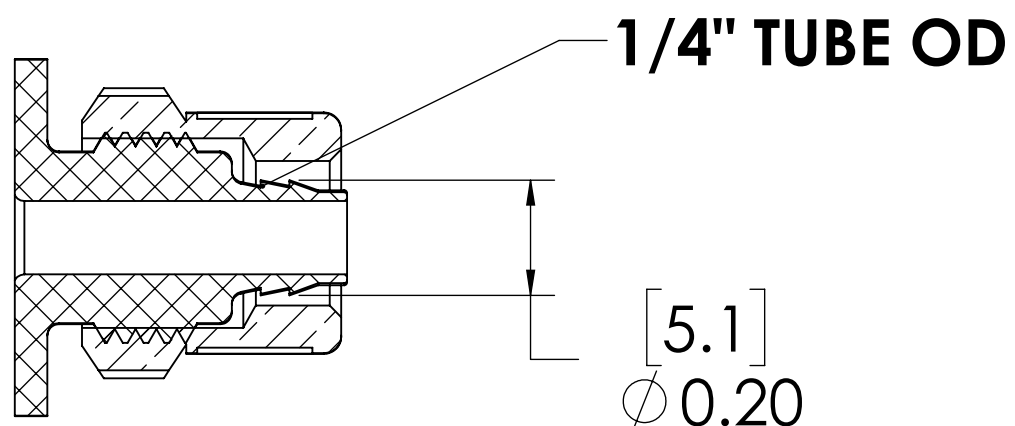


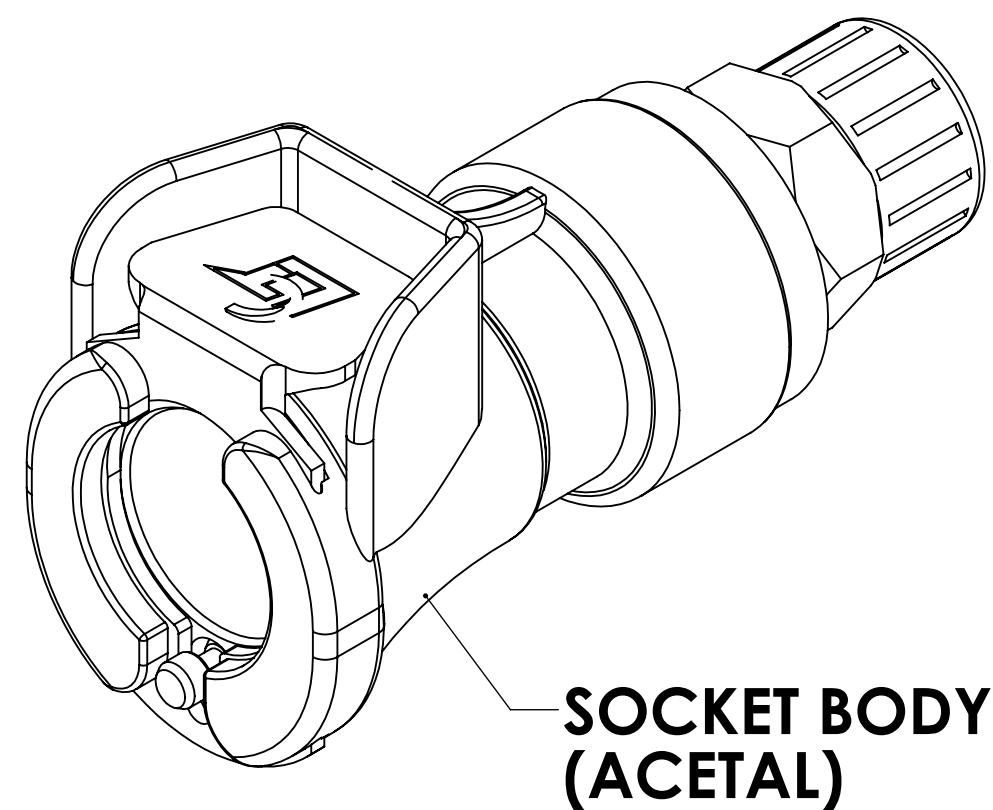
REVISIONS						
SHEET	ZONE	REV.	ECO	DESCRIPTION	DATE	APPROVED
1	ALL	A	50242	UPDATE DWG TO CURRENT FORMAT & STANDARDS	10/4/2018	HRC



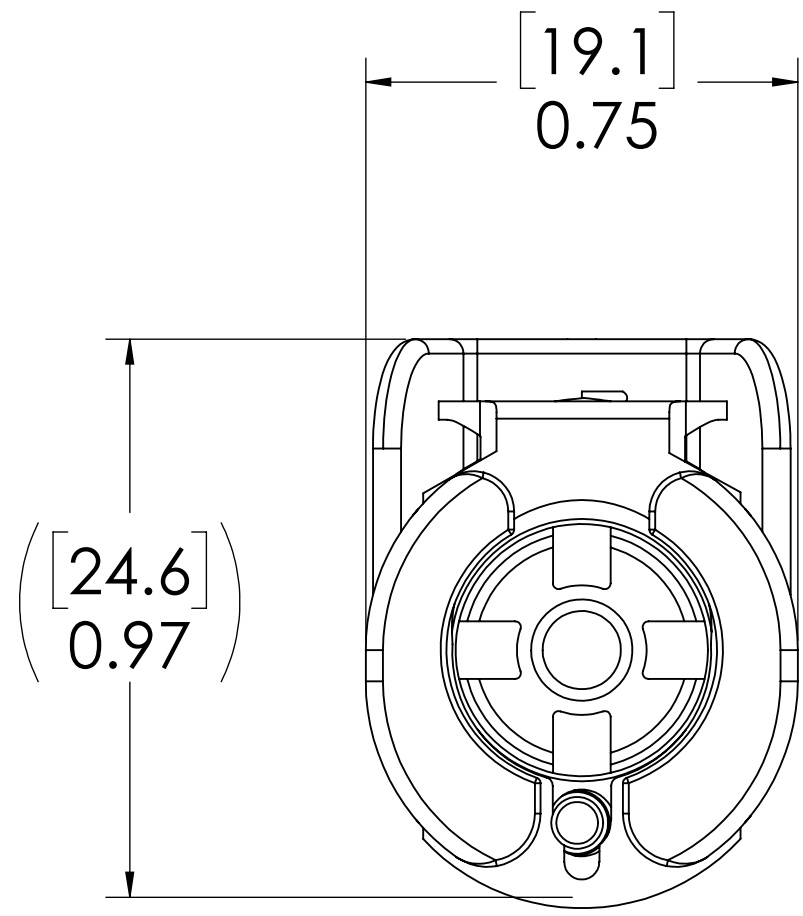
**DETAIL A**



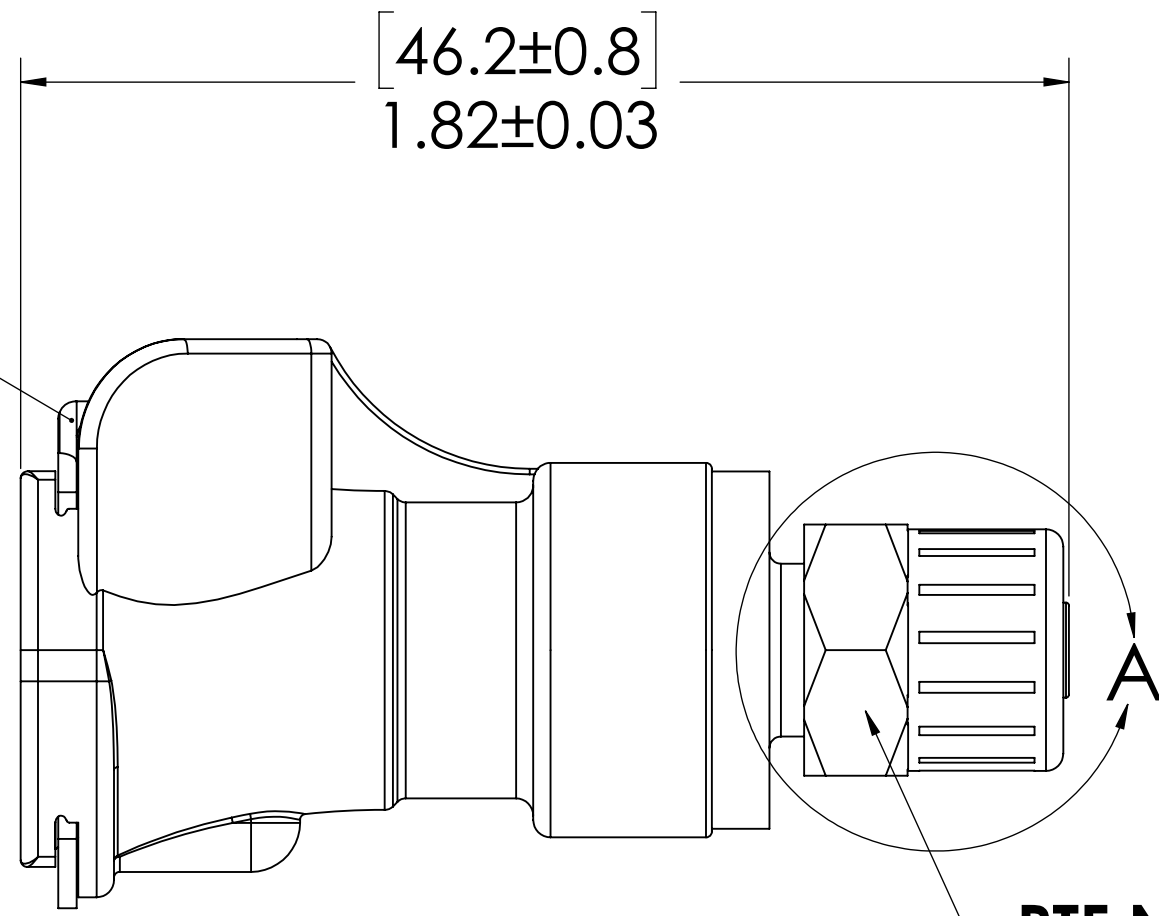
**SECTION B-B**



**SOCKET BODY (ACETAL)**




**LATCH HARDWARE (STAINLESS STEEL)**



**PTF NUT (BRASS, NICKEL PLATED) (PACKAGED SEPARATELY)**

- NOTES:**
- MATERIAL: ACETAL
  - COLOR: NATURAL WHITE

**FOR REFERENCE ONLY**

<small>UNLESS OTHERWISE SPECIFIED:          DIMENSIONS ARE IN INCHES          TOLERANCES:          FRACTIONAL ± 1/32          ANGULAR, MACH ± 0.5 BEND ± 2          ONE PLACE DECIMAL ± 0.1          TWO PLACE DECIMAL ± 0.01          THREE PLACE DECIMAL ± 0.005          TWO PLACE DUAL (mm) [±0.12]</small>	DRAWN	LDM	12/15/17	 <b>PART NO: 40AC-S9-04</b> <b>DESCRIPTION: LinkTech 40AC Series Straight Female, Non-valved, 1/4" PTF, Natural Acetal</b>						
	CHECKED	HRC	12/15/17							
	ENG APPR.	HRC	10/4/18							
	MFG APPR.	BDB	10/4/18							
<small>PROPRIETARY AND CONFIDENTIAL</small> <small>THE INFORMATION CONTAINED IN THIS DRAWING IS THE SOLE PROPERTY OF LINKTECH LLC. ANY REPRODUCTION OR DISCLOSURE IN PART OR AS A WHOLE WITHOUT THE WRITTEN PERMISSION OF LINKTECH LLC IS STRICTLY PROHIBITED.</small>	PRODUCTION	LS	10/4/18	<small>COMMENTS:</small> <table border="1"> <tr> <td>SIZE</td> <td>DWG. NO.</td> <td>REV</td> </tr> <tr> <td><b>C</b></td> <td><b>40AC400235</b></td> <td><b>A</b></td> </tr> </table>	SIZE	DWG. NO.	REV	<b>C</b>	<b>40AC400235</b>	<b>A</b>
SIZE	DWG. NO.	REV								
<b>C</b>	<b>40AC400235</b>	<b>A</b>								
SCALE: NTS			WEIGHT:	SHEET 1 OF 1						