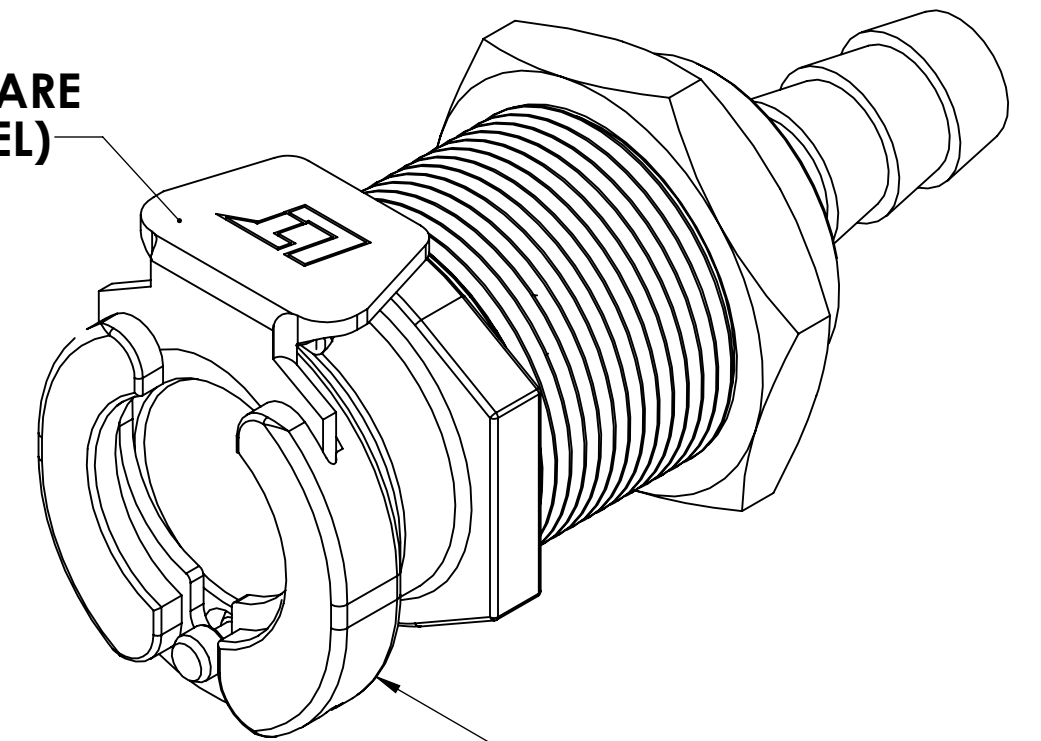
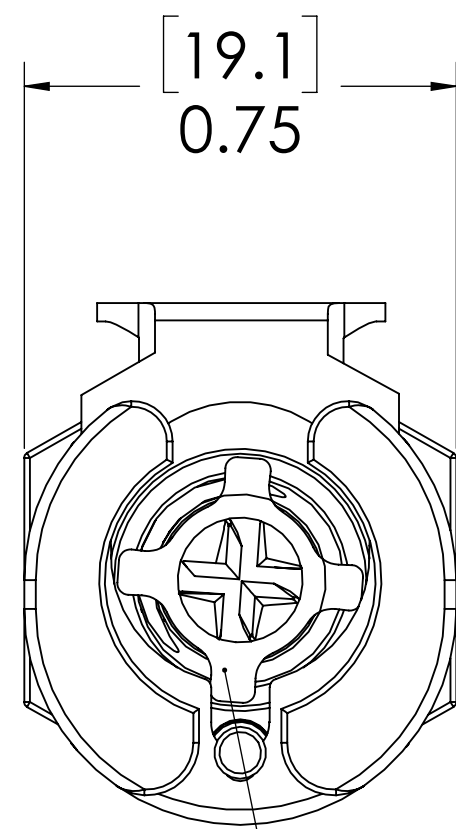


REVISIONS						
SHEET	ZONE	REV.	ECO	DESCRIPTION	DATE	APPROVED
1		A	50242	PIN, PIN SPRING & DWG FORMAT UPDATE	7/24/2018	HRC

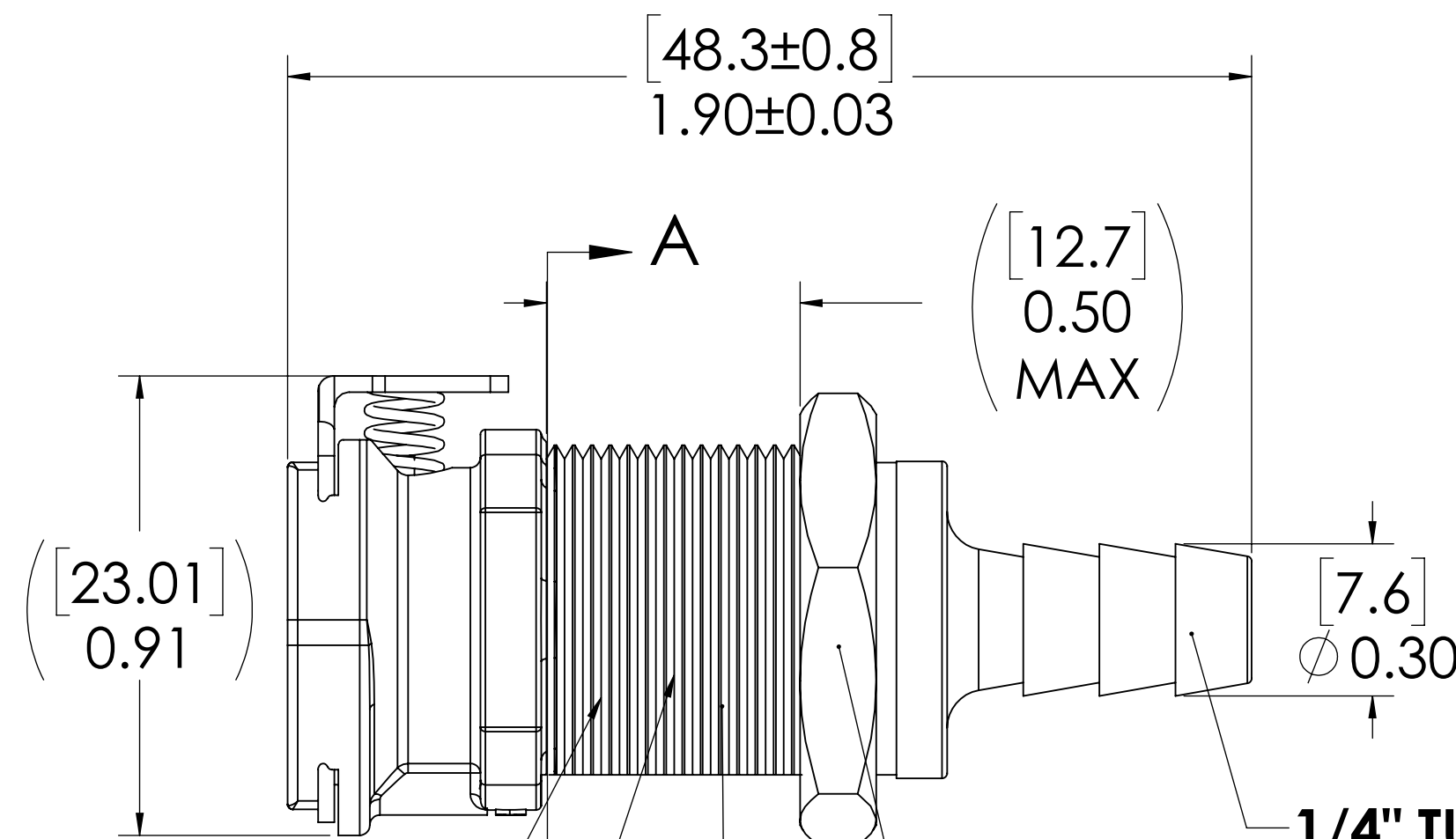
LATCH HARDWARE
(STAINLESS STEEL)



SOCKET,
(ACETAL)



VALVE,
(ACETAL)



VALVE O-RING,
INTERNAL
(BUNA-N)

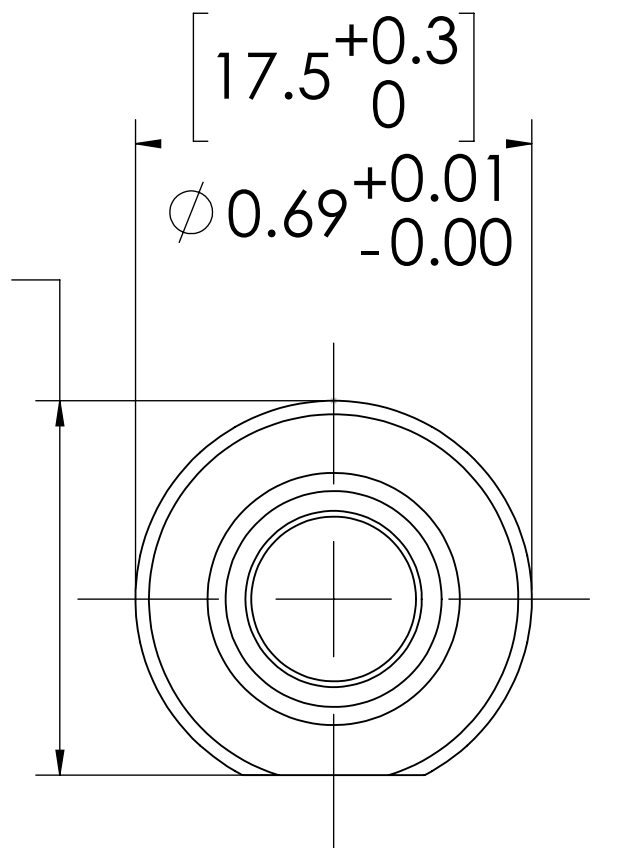
VALVE SPRING,
INTERNAL
(STAINLESS STEEL)

PANEL NUT,
(BRASS, NICKEL PLATED)
PACKAGED SEPARATELY

11/16"-24 THREAD

16.8^{+0.3}₀
0.66^{+0.01}_{-0.00}

1/4" TUBE ID




PANEL OPENING
(SECTION A-A)

NOTES:

1. MATERIAL: ACETAL
2. COLOR: NATURAL WHITE
3. O-RING MATERIAL: BUNA-N
4. O-RINGS LUBRICATED WITH FOOD GRADE SILICONE OIL, 350 CST.

FOR REFERENCE ONLY

UNLESS OTHERWISE SPECIFIED: DIMENSIONS ARE IN INCHES TOLERANCES: FRACTIONAL ± 1/32 ANGULAR, MACH ± 0.5 BEND ± 2 ONE PLACE DECIMAL ± 0.1 TWO PLACE DECIMAL ± 0.01 THREE PLACE DECIMAL ± 0.005 TWO PLACE DUAL (mm) [± 0.12]	DRAWN	ER	08-15-17	 PART NO: 40ACV-SB3-04 DESCRIPTION: LinkTech 40AC Series Panel Mt. Female, Valved, 1/4" HB, Natural Acetal
	CHECKED	HRC	08-15-17	
	ENG APPR.	HRC	7/24/18	
	MFG APPR.	BDB	7/24/18	
PRODUCTION	LS	7/24/18	COMMENTS:	SIZE DWG. NO. REV C 40AC400211 A
THE INFORMATION CONTAINED IN THIS DRAWING IS THE SOLE PROPERTY OF LINKTECH LLC. ANY REPRODUCTION OR DISCLOSURE IN PART OR AS A WHOLE WITHOUT THE WRITTEN PERMISSION OF LINKTECH LLC IS STRICTLY PROHIBITED.			SCALE: NTS WEIGHT:	SHEET 1 OF 1