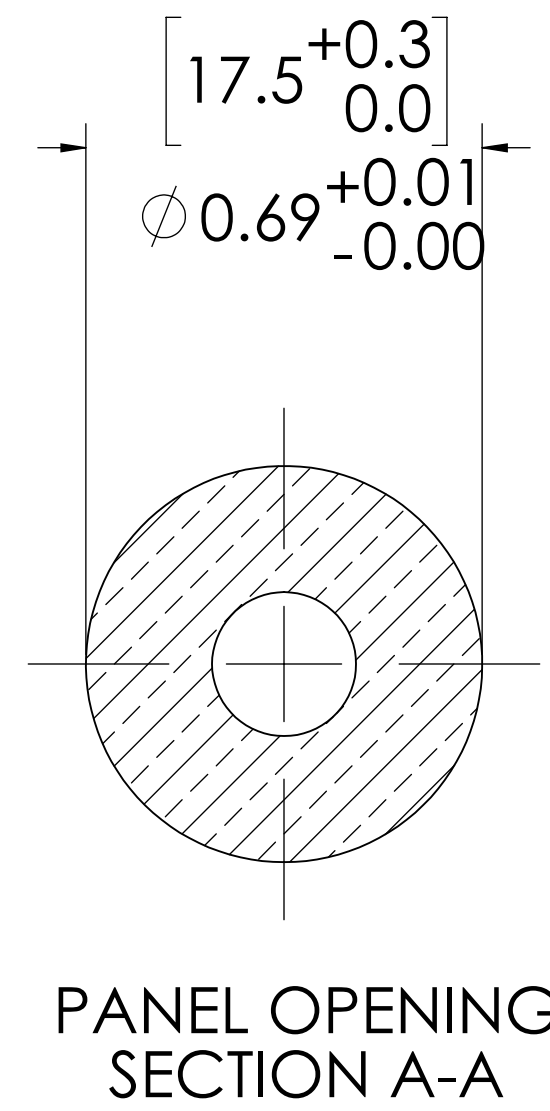
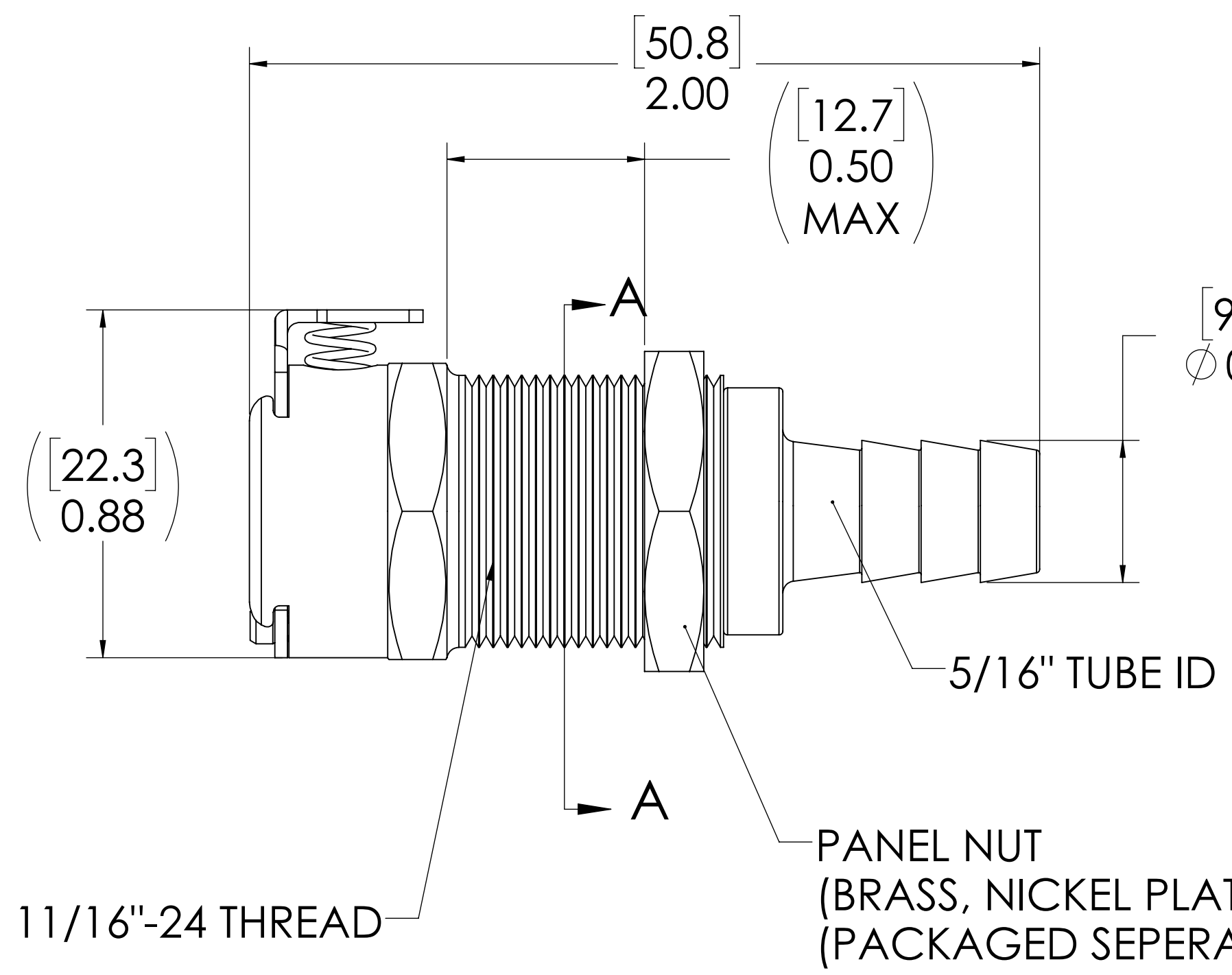
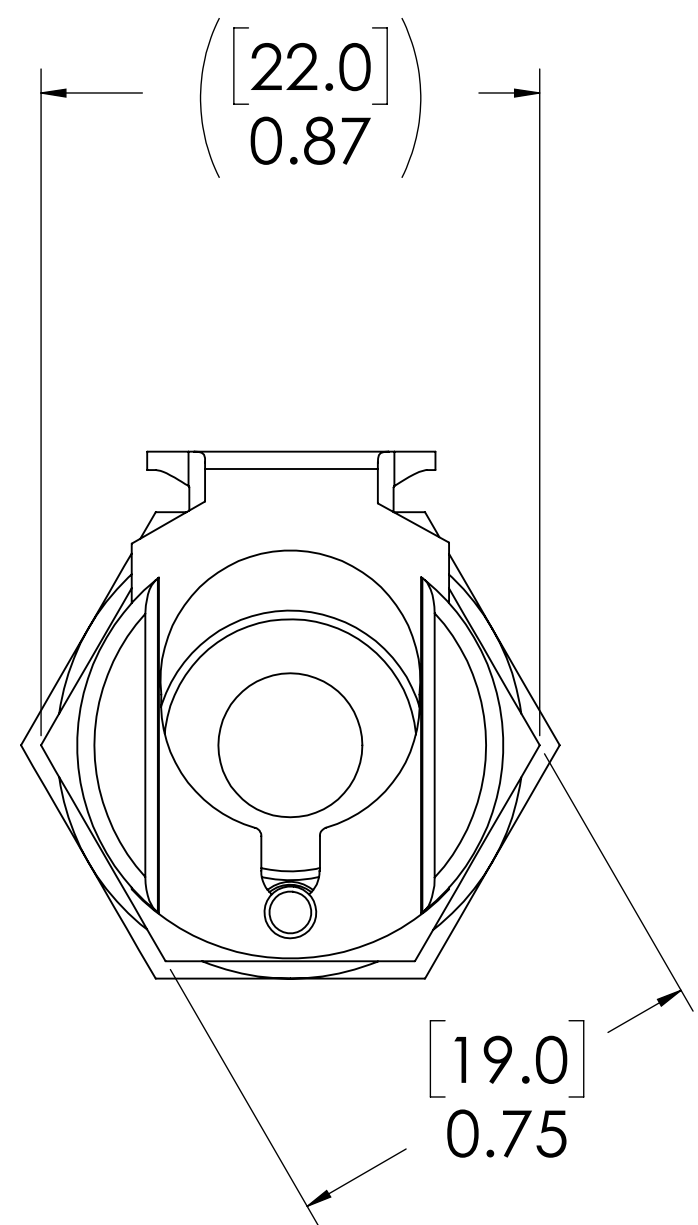
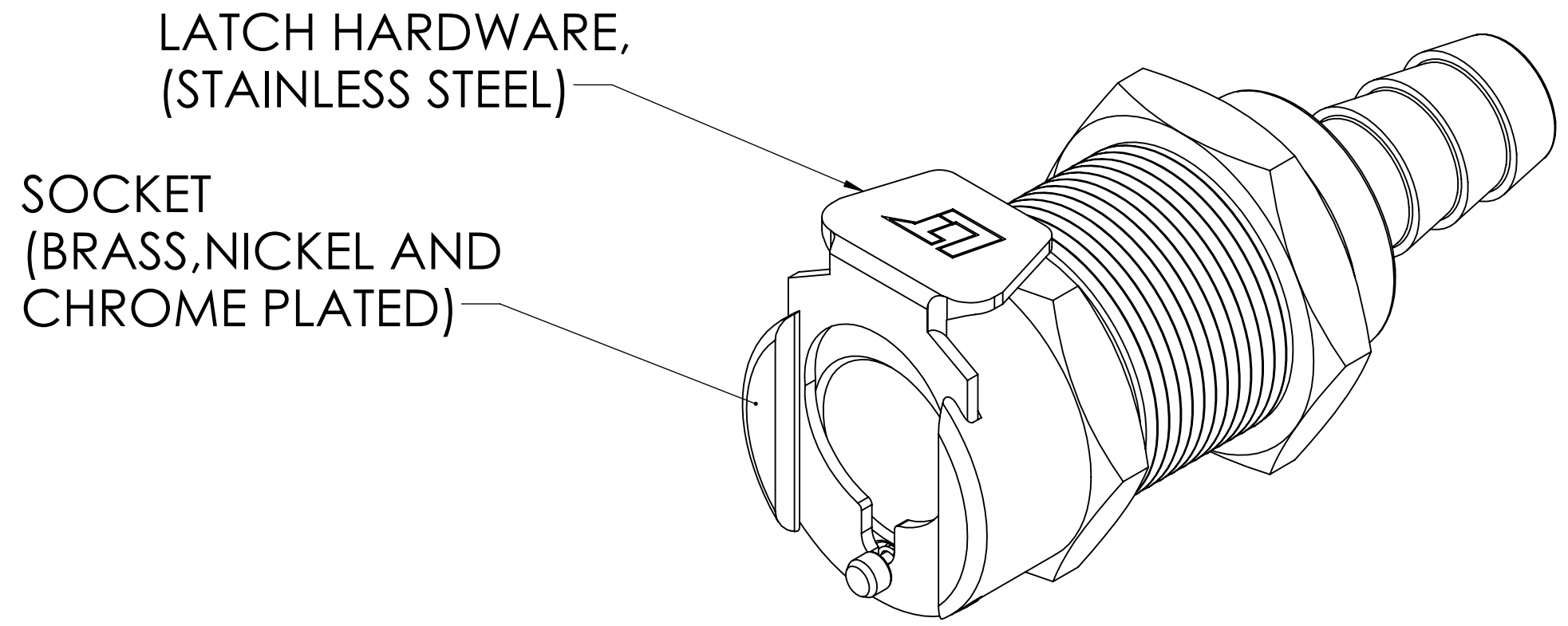


REVISIONS						
SHEET	ZONE	REV.	ECO	DESCRIPTION	DATE	APPROVED
1	ALL	A	50242	PIN, PIN SPRING @ 2017 FORMAT UPDATE	3/23/2018	HRC



- NOTES:**
- MATERIAL: BRASS
 - FINISH: CHROME

FOR REFERENCE ONLY

UNLESS OTHERWISE SPECIFIED: DIMENSIONS ARE IN INCHES TOLERANCES: FRACTIONAL ± 1/32 ANGULAR, MACH ± 0.5 BEND ± 2 ONE PLACE DECIMAL ± 0.1 TWO PLACE DECIMAL ± 0.01 THREE PLACE DECIMAL ± 0.005 TWO PLACE DUAL (mm) [±0.12]	DRAWN	DHJ	9-24-09	
	CHECKED	HRC	01-23-11	
	ENG APPR.	HRC	03-23-18	
	MFG APPR.	BDB	03-23-18	
PROPRIETARY AND CONFIDENTIAL THE INFORMATION CONTAINED IN THIS DRAWING IS THE SOLE PROPERTY OF LINKTECH LLC. ANY REPRODUCTION OR DISCLOSURE IN PART OR AS A WHOLE WITHOUT THE WRITTEN PERMISSION OF LINKTECH LLC IS STRICTLY PROHIBITED.	PURCHASING	RK	03-23-18	PART NO: 40CB-S3-05 DESCRIPTION: LinkTech 40CB Series Panel Mt. Female, Non-valved, 5/16" HB, Chrome Brass
COMMENTS:		SIZE DWG. NO. REV C 40CB400074 A	SCALE: NTS WEIGHT: SHEET 1 OF 1	