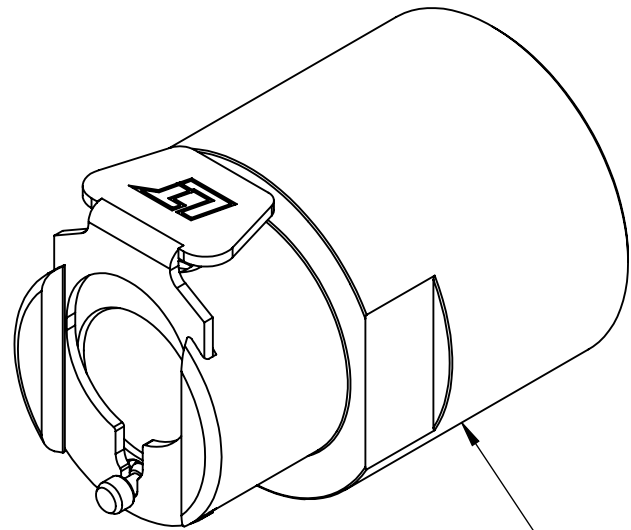


REVISIONS						
SHEET	ZONE	REV.	ECO	DESCRIPTION	DATE	APPROVED
		A		INITIAL RELEASE FOR PRODUCTION	02-26-21	FJL



**SOCKET (BRASS,
CHROME PLATED)**

**LATCH, LONG SLOT
(STAINLESS STEEL)**

**LATCH SPRING
(STAINLESS STEEL)**

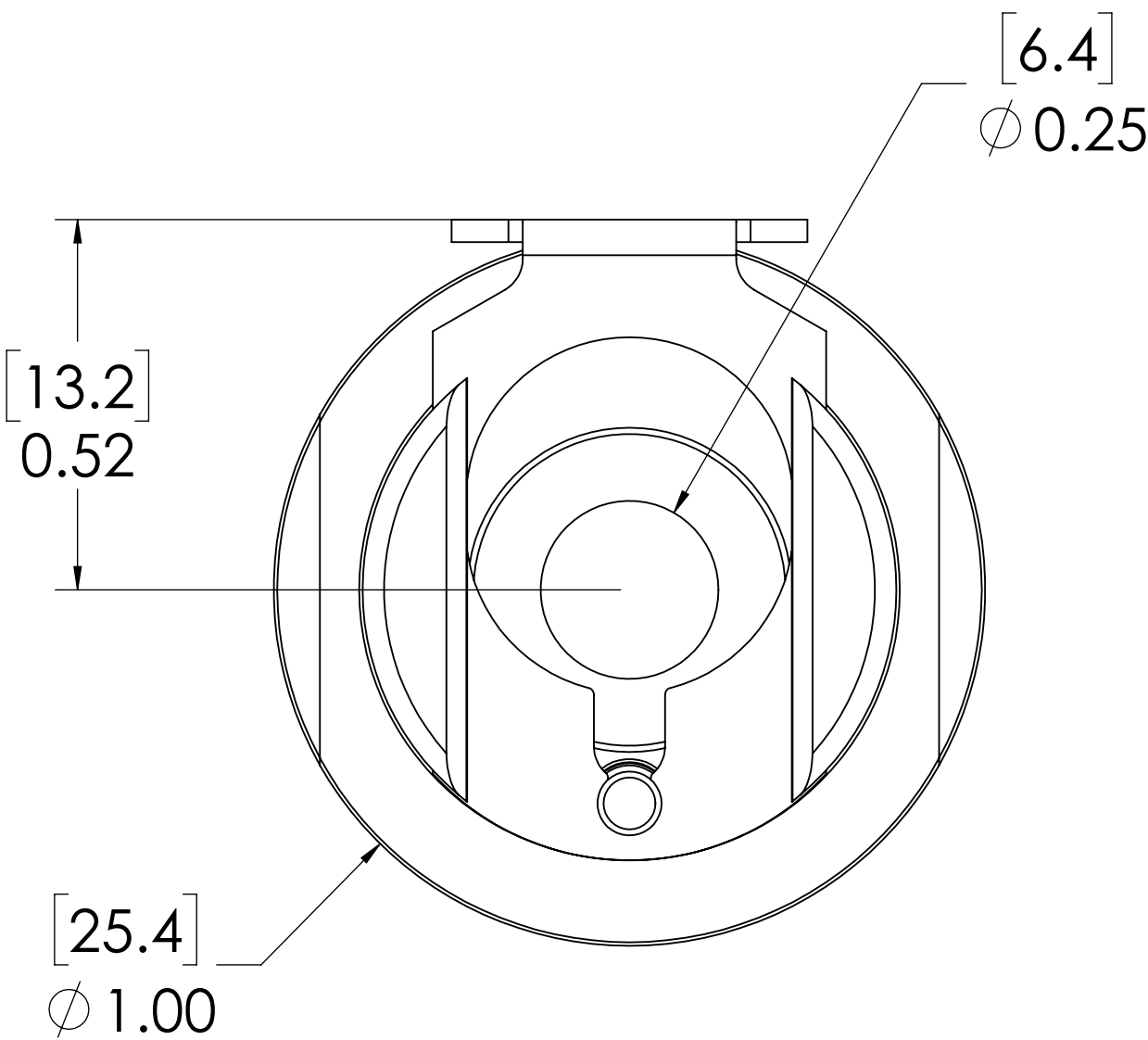
[35.9]
1.41

**GASKET,
INTERNAL
(BUNA-N)**

**1/2-14 NPSM,
INTERNAL
(PIPE THREAD)**

**BUTTON RELEASE PIN,
INTERNAL
(STAINLESS STEEL)**

**SPRING, RELEASE
BUTTON PIN,
INTERNAL
(STAINLESS STEEL)**



NOTES:

- MATERIAL: BRASS
- FINISH: CHROME
- GASKET MATERIAL: BUNA-N

FOR REFERENCE ONLY

PROPRIETARY AND CONFIDENTIAL
THE INFORMATION CONTAINED IN THIS
DRAWING IS THE SOLE PROPERTY OF
LINKTECH LLC. ANY REPRODUCTION
OR DISCLOSURE IN PART OR AS A
WHOLE WITHOUT THE WRITTEN
PERMISSION OF LINKTECH LLC IS
STRICTLY PROHIBITED.

UNLESS OTHERWISE SPECIFIED:
DIMENSIONS ARE IN INCHES
TOLERANCES:
FRACTIONAL ±1/32
ANGULAR: MACH±0.5 BEND ±2
ONE PLACE DECIMAL ±0.1
TWO PLACE DECIMAL ±0.01
THREE PLACE DECIMAL ±0.005
TWO PLACE DUAL (mm) [±0.12]

COMMENTS:



PART NO: **40CB-S35296**

DESCRIPTION:
**SOCKET, 40CB, NV, 1/2 IPS
FEMALE THREAD**

SIZE	DWG. NO.	REV
C	1169587	A

SCALE: NTS WEIGHT: SHEET 1 OF 1