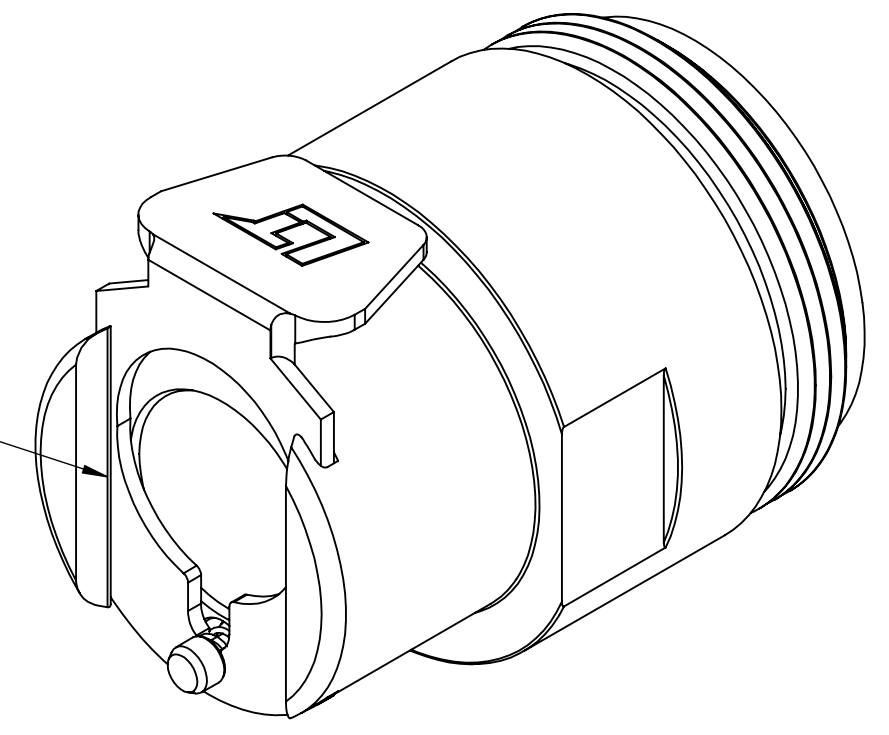
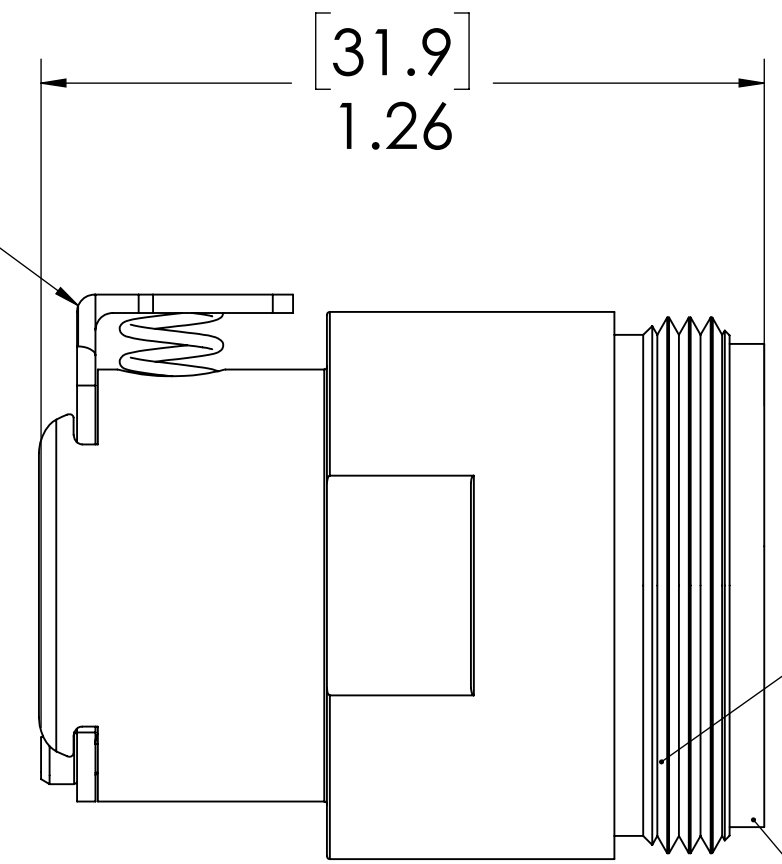


REVISIONS						
SHEET	ZONE	REV.	ECO	DESCRIPTION	DATE	APPROVED
1	ALL	A	50242	PIN, PIN SPRING & 2017 FORMAT UPDATE	10/18/2018	HRC

**SOCKET  
(BRASS, NICKEL &  
CHROME PLATED)**

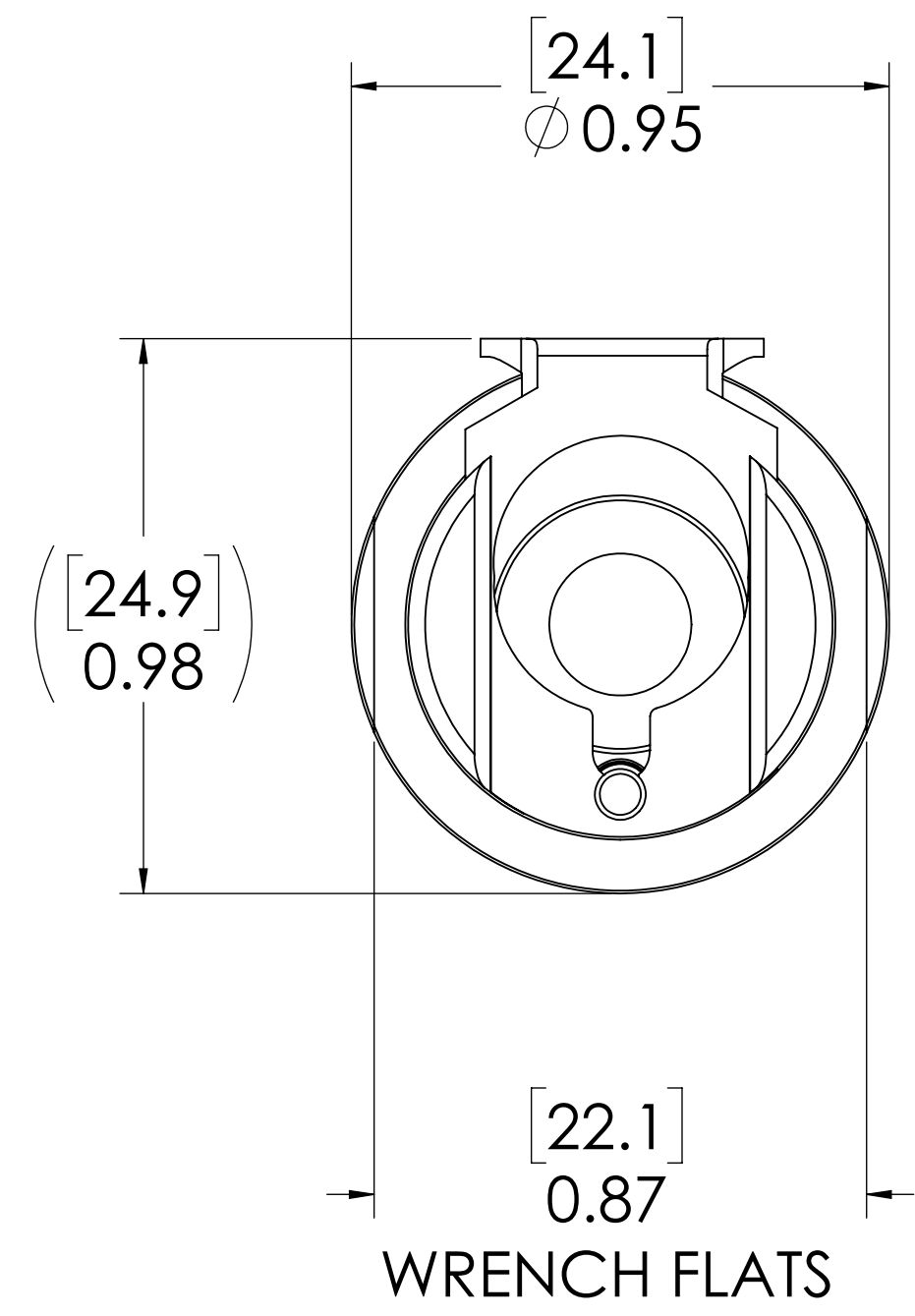


**LATCH  
(STAINLESS STEEL)**




**15/16"-24 THREAD**

**GASKET  
(EDPM)**



- NOTES:**
- MATERIAL: BRASS
  - FINISH: CHROME
  - GASKET MATERIAL: EPDM

**FOR REFERENCE ONLY**

<small>UNLESS OTHERWISE SPECIFIED: DIMENSIONS ARE IN INCHES TOLERANCES: FRACTIONAL ± 1/32 ANGULAR: MACH ± 0.5 BEND ± 2 ONE PLACE DECIMAL ± 0.1 TWO PLACE DECIMAL ± 0.01 THREE PLACE DECIMAL ± 0.005 TWO PLACE DUAL (mm) [± 0.12]</small>	DRAWN	LDM	1/17/2018	 <b>PART NO: 40CB-S3562</b> <b>DESCRIPTION: LinkTech 40CB Series Male Thread Female, Non-valved, M24 X 1 Thread, Chrome Brass</b>									
	CHECKED	HRC	1/17/2018										
	ENG APPR.	HRC	10/18/18										
	MFG APPR.	BDB	10/18/18										
PRODUCTION	LS	10/18/18		<table border="1"> <tr> <td>SIZE</td> <td>DWG. NO.</td> <td>REV</td> </tr> <tr> <td><b>C</b></td> <td><b>40CB400199</b></td> <td><b>A</b></td> </tr> <tr> <td>SCALE: NTS</td> <td>WEIGHT:</td> <td>SHEET 1 OF 1</td> </tr> </table>	SIZE	DWG. NO.	REV	<b>C</b>	<b>40CB400199</b>	<b>A</b>	SCALE: NTS	WEIGHT:	SHEET 1 OF 1
SIZE	DWG. NO.	REV											
<b>C</b>	<b>40CB400199</b>	<b>A</b>											
SCALE: NTS	WEIGHT:	SHEET 1 OF 1											
<small>PROPRIETARY AND CONFIDENTIAL THE INFORMATION CONTAINED IN THIS DRAWING IS THE SOLE PROPERTY OF LINKTECH LLC. ANY REPRODUCTION OR DISCLOSURE IN PART OR AS A WHOLE WITHOUT THE WRITTEN PERMISSION OF LINKTECH LLC IS STRICTLY PROHIBITED.</small>				<small>COMMENTS:</small>									