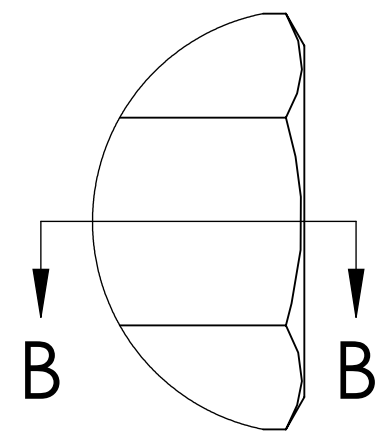
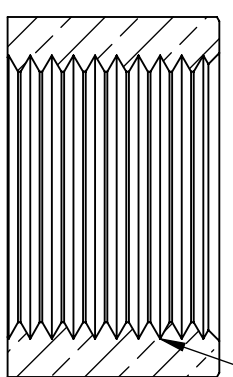


REVISIONS						
SHEET	ZONE	REV.	ECO	DESCRIPTION	DATE	APPROVED
1	ALL	A	50253	UPDATE DWG TO CURRENT FORMAT & STANDARDS	10/18/2018	HRC



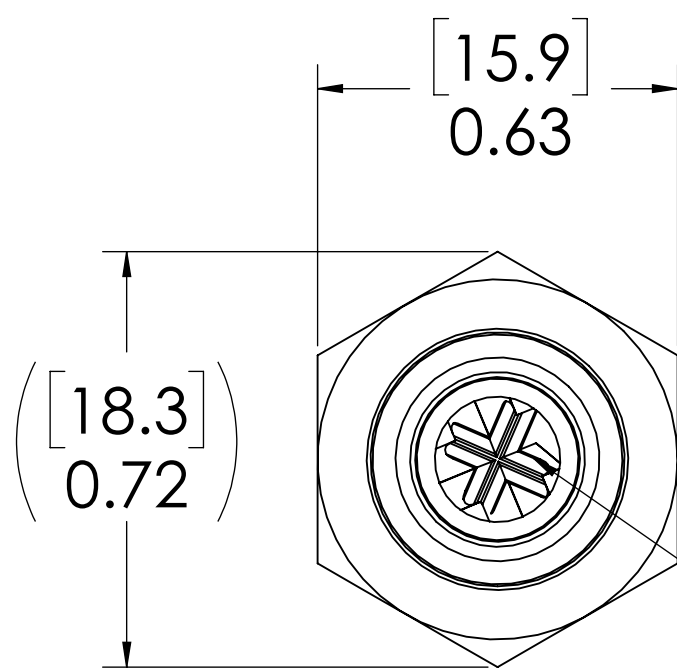
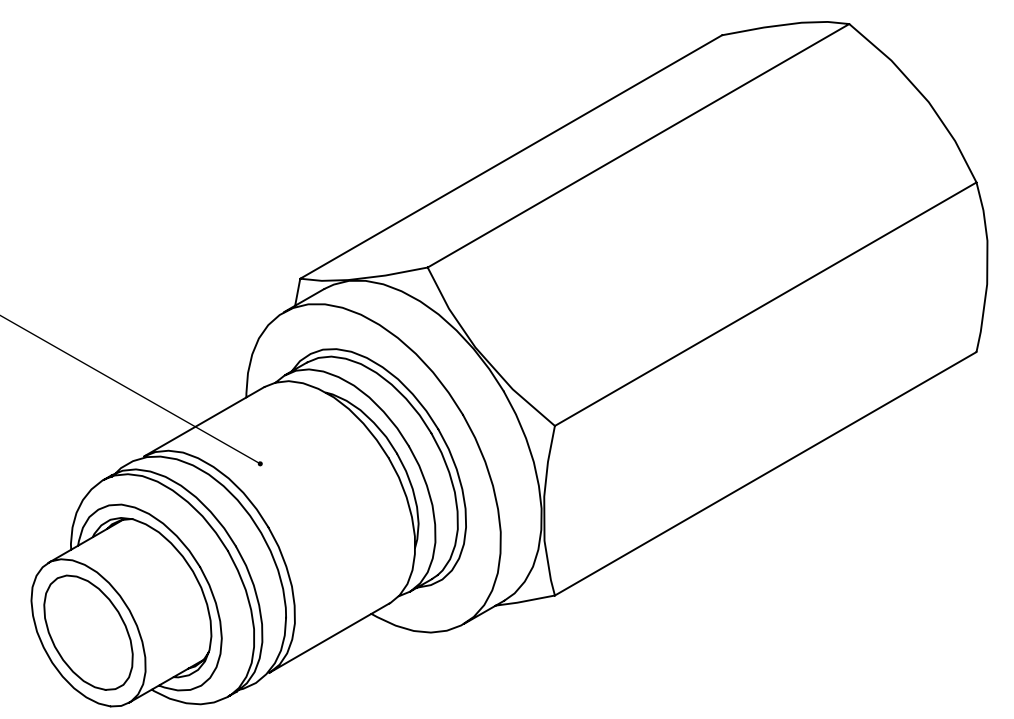
DETAIL A



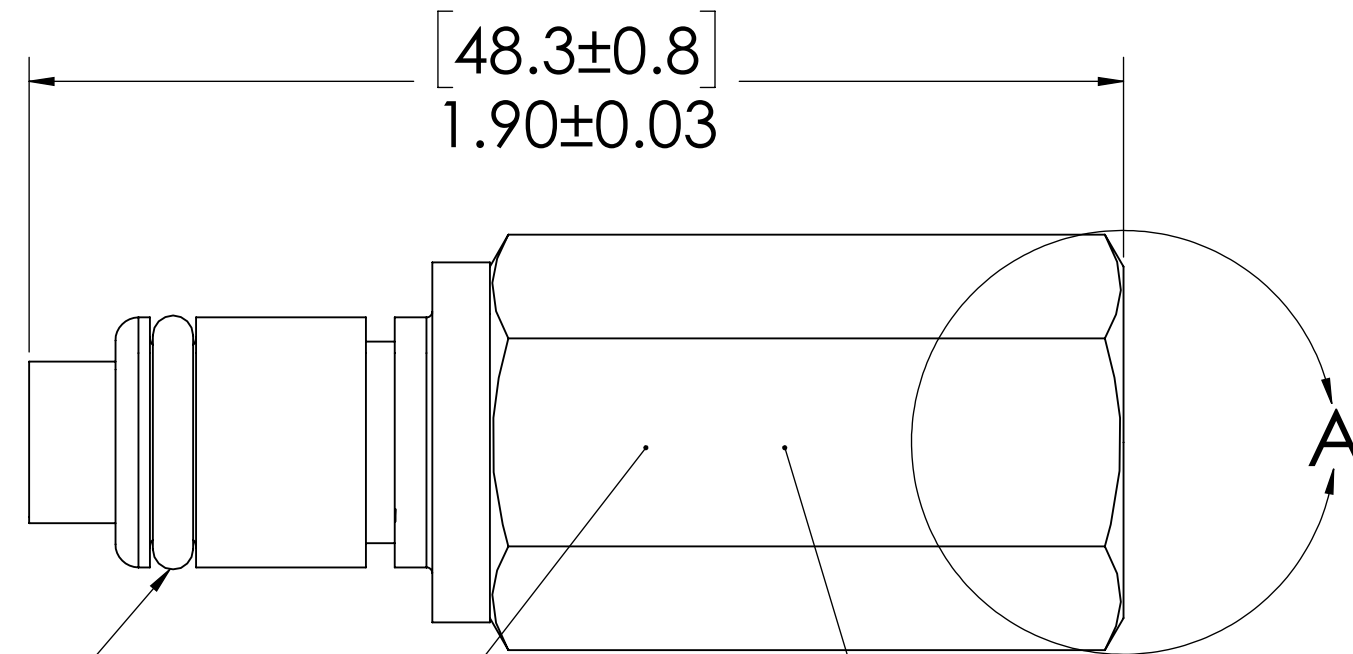
SECTION B-B

**1/4" FNPT
(PIPE THREAD)**

**PLUG
(BRASS, NICKEL &
CHROME PLATED)**



**VALVE
(ACETAL)**




**O-RING
(BUNA-N)**

**VALVE O-RING
(INTERNAL)
(BUNA-N)**

**SPRING
(INTERNAL)
(STAINLESS STEEL)**

- NOTES:**
- MATERIAL: BRASS
 - FINISH: CHROME PLATED
 - O-RING MATERIAL: BUNA-N
 - O-RINGS LUBRICATED WITH FOOD GRADE SILICONE OIL, 350 CST.

FOR REFERENCE ONLY

<small>UNLESS OTHERWISE SPECIFIED: DIMENSIONS ARE IN INCHES TOLERANCES: FRACTIONAL ± 1/32 ANGULAR, MACH ± 0.5 BEND ± 2 ONE PLACE DECIMAL ± 0.1 TWO PLACE DECIMAL ± 0.01 THREE PLACE DECIMAL ± 0.005 TWO PLACE DUAL (mm) [±0.12]</small>	DRAWN	LDM	1/22/2018	 PART NO: 40CBV-PB13-04 <small>DESCRIPTION: LinkTech 40CB Series Female Thread Male, Valved, 1/4" FNPT, Chrome Brass</small>
	CHECKED	HRC	1/22/2018	
	ENG APPR.	HRC	10/18/18	
	MFG APPR.	BDB	10/18/18	
PRODUCTION	LS	10/18/18		<small>SIZE DWG. NO. REV</small> C 40CB400264 A
<small>PROPRIETARY AND CONFIDENTIAL THE INFORMATION CONTAINED IN THIS DRAWING IS THE SOLE PROPERTY OF LINKTECH LLC. ANY REPRODUCTION OR DISCLOSURE IN PART OR AS A WHOLE WITHOUT THE WRITTEN PERMISSION OF LINKTECH LLC IS STRICTLY PROHIBITED.</small>				<small>SCALE: NTS WEIGHT: SHEET 1 OF 1</small>