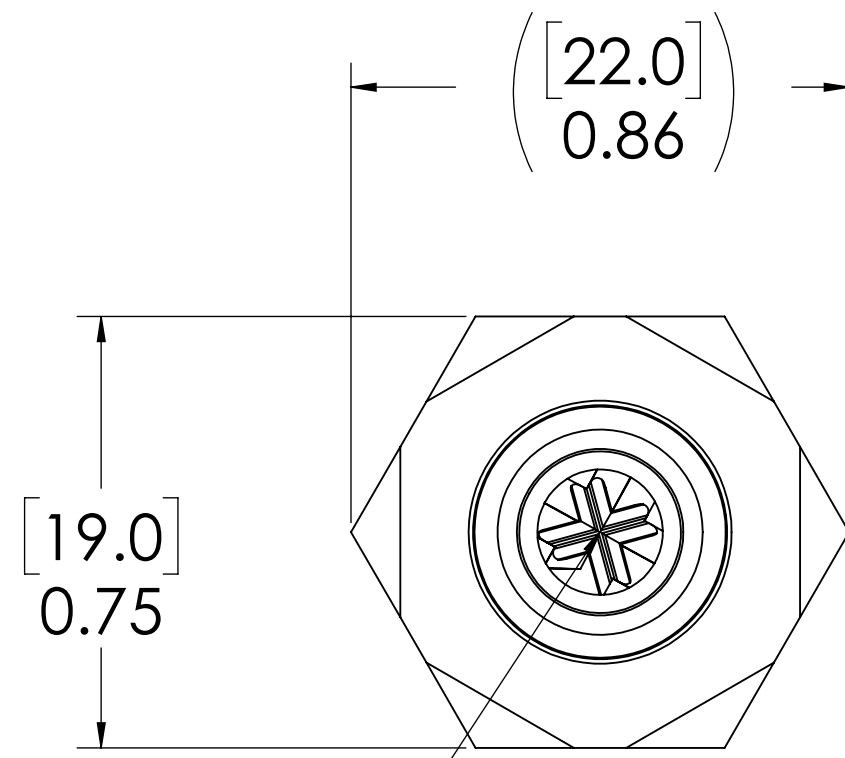
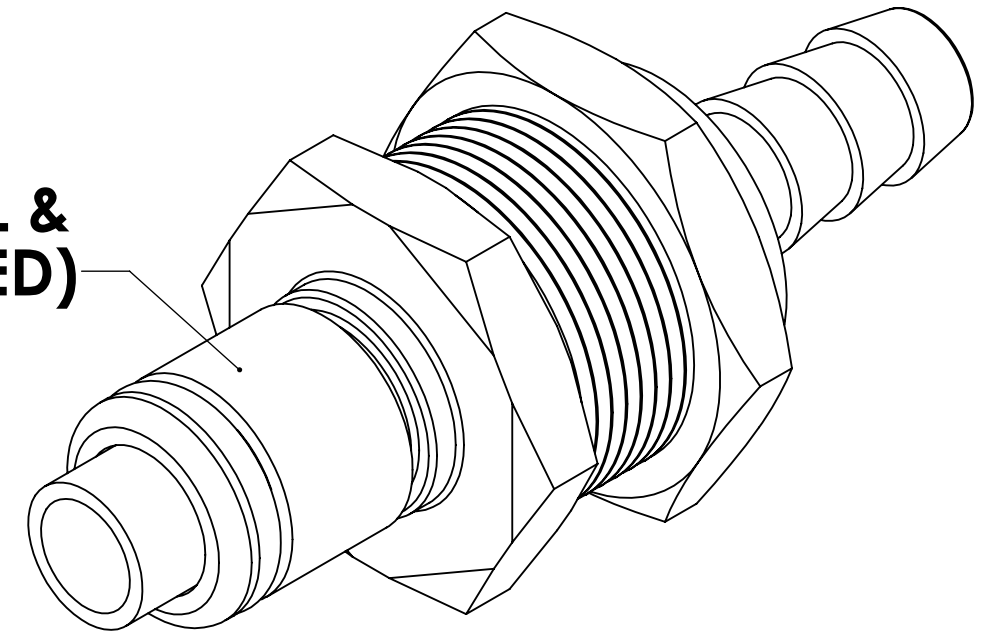
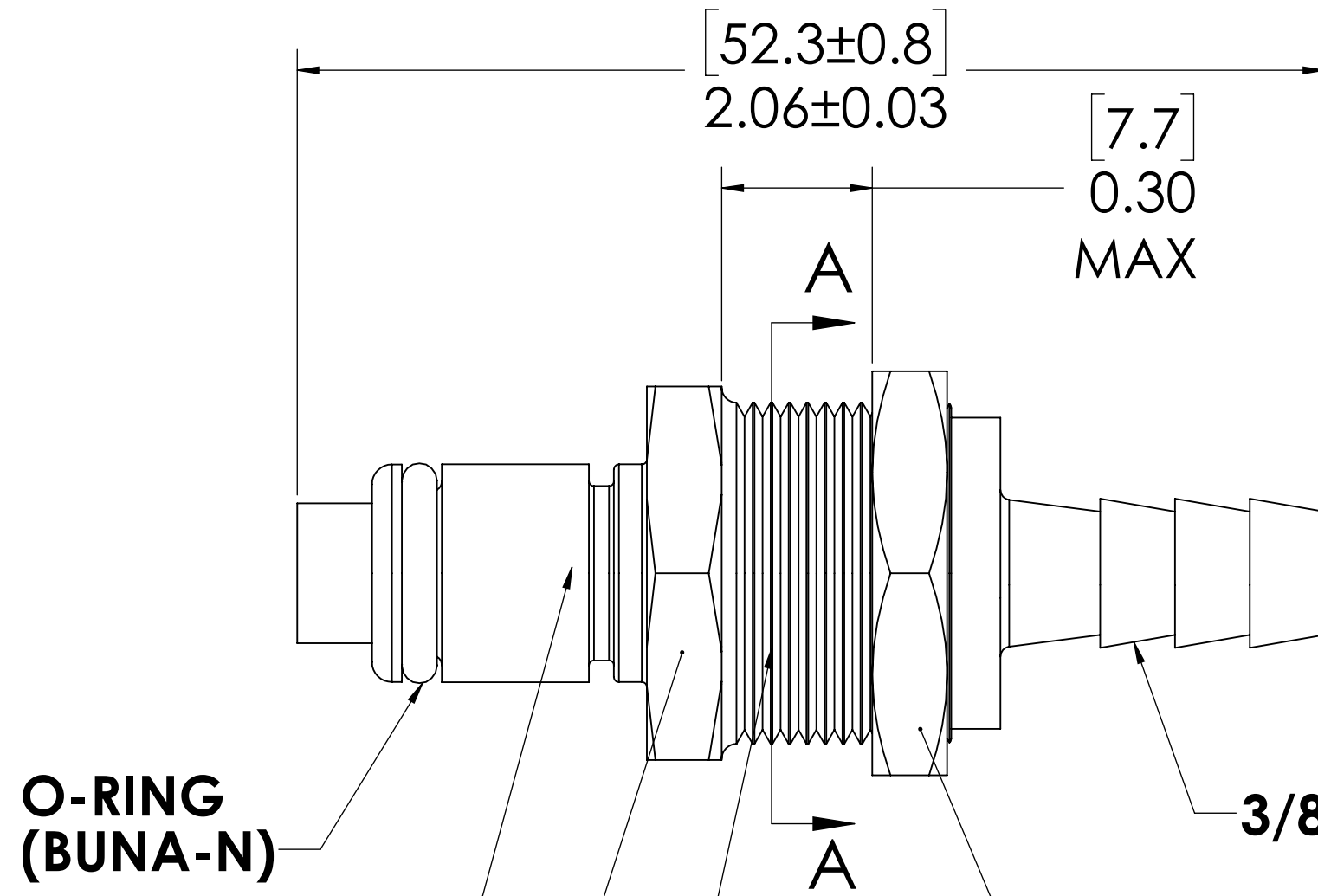


REVISIONS						
SHEET	ZONE	REV.	ECO	DESCRIPTION	DATE	APPROVED
1	ALL	A	50253	UPDATE DWG TO CURRENT FORMAT & STANDARDS	10/18/2018	HRC

**PLUG,  
(BRASS, NICKEL &  
CHROME PLATED)**



**VALVE,  
(ACETAL)**



**O-RING  
(BUNA-N)**

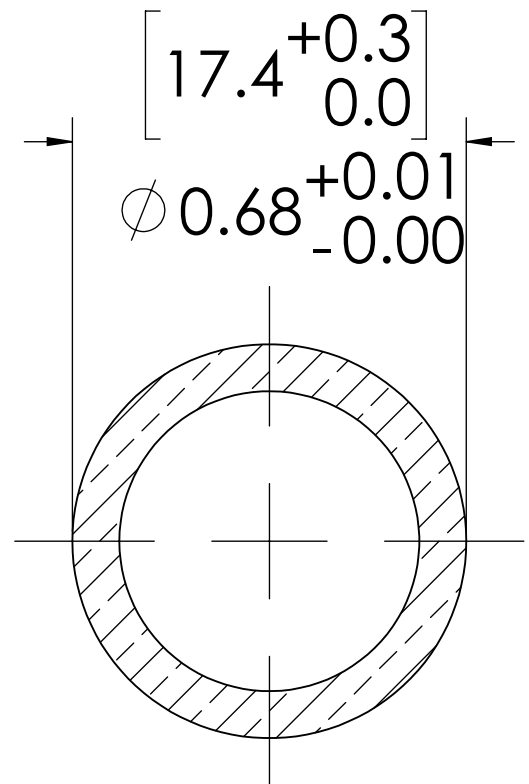
**VALVE O-RING  
INTERNAL  
(BUNA-N)**

**VALVE SPRING  
INTERNAL,  
(STAINLESS STEEL)**

**3/8" TUBE ID**

**PANEL NUT  
(BRASS, NICKEL PLATED)  
(PACKAGED SEPARATELY)**

**11/16"-24 UNS THREAD**



**PANEL OPENING  
(SECTION A-A)**

**NOTES:**

- MATERIAL: BRASS
- COLOR: CHROME
- O-RING MATERIAL: BUNA-N
- O-RINGS LUBRICATED WITH FOOD GRADE SILICONE OIL, 350 CST.

**FOR REFERENCE ONLY**

<small>UNLESS OTHERWISE SPECIFIED: DIMENSIONS ARE IN INCHES TOLERANCES: FRACTIONAL ± 1/32 ANGULAR, MACH ± 0.5 BEND ± 2 ONE PLACE DECIMAL ± 0.1 TWO PLACE DECIMAL ± 0.01 THREE PLACE DECIMAL ± 0.005 TWO PLACE DUAL (mm) [±0.12]</small>	DRAWN	<b>LDM</b>	1/23/2018	
	CHECKED	<b>HRC</b>	1/23/2018	
	ENG APPR.	<b>HRC</b>	10/18/18	
	MFG APPR.	<b>BDB</b>	10/18/18	
PRODUCTION	<b>LS</b>	10/18/18		<b>PART NO: 40CBV-PB3-06</b> <b>DESCRIPTION: LinkTech 40CB Series Panel Mt. Male, Valved, 3/8" HB, Chrome Brass</b>
<small>PROPRIETARY AND CONFIDENTIAL THE INFORMATION CONTAINED IN THIS DRAWING IS THE SOLE PROPERTY OF LINKTECH LLC. ANY REPRODUCTION OR DISCLOSURE IN PART OR AS A WHOLE WITHOUT THE WRITTEN PERMISSION OF LINKTECH LLC IS STRICTLY PROHIBITED.</small>	COMMENTS:			<b>SIZE DWG. NO. REV</b> <b>C 40CB400251 A</b>
	SCALE: NTS	WEIGHT:		SHEET 1 OF 1