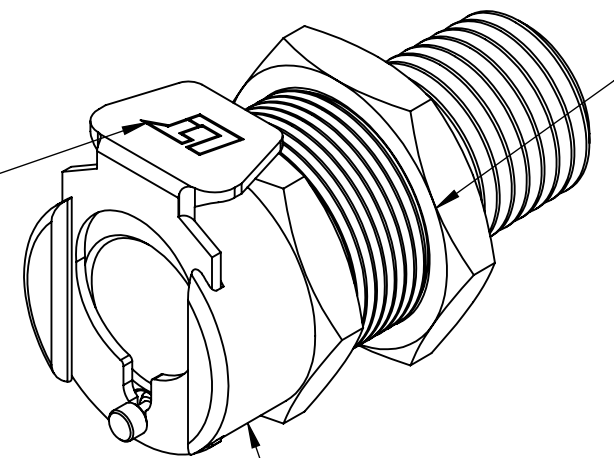


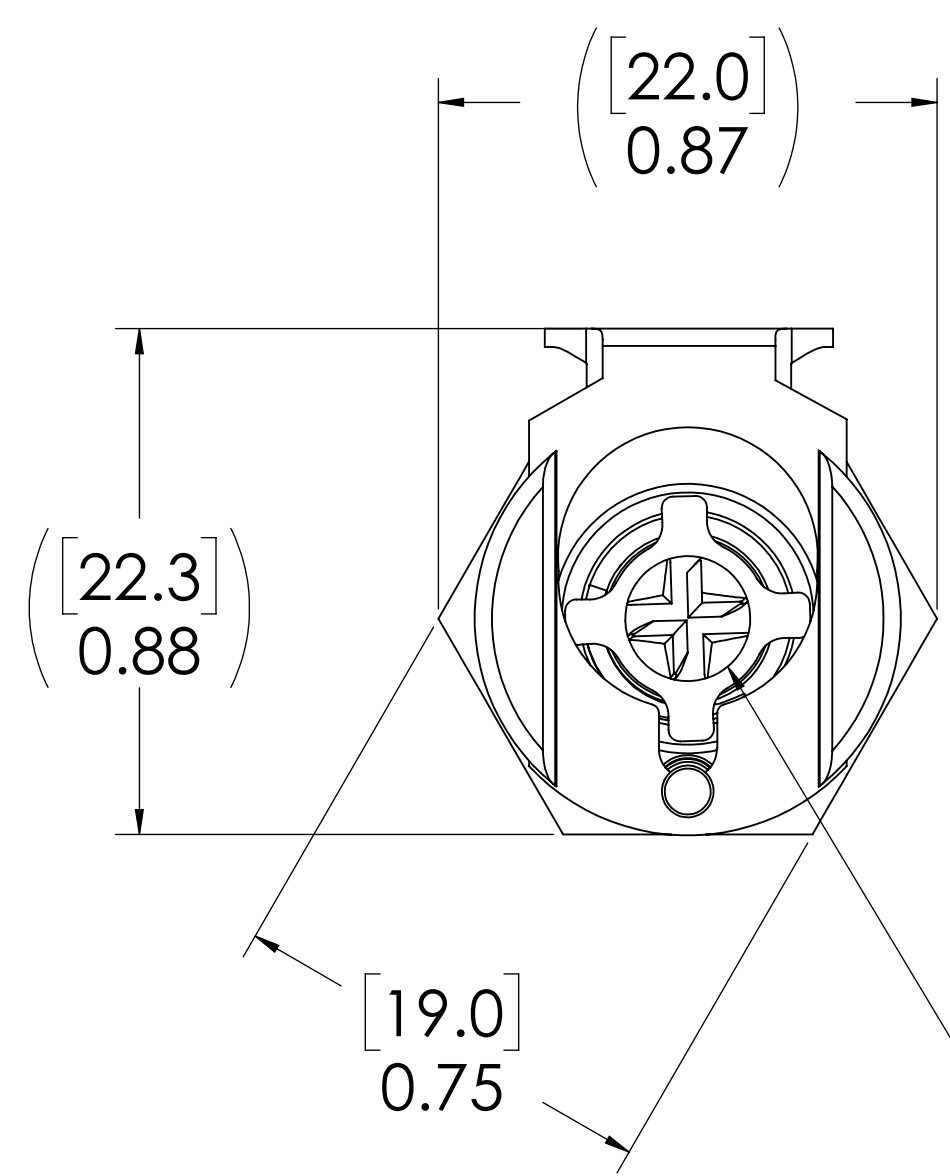
REVISIONS						
SHEET	ZONE	REV.	ECO	DESCRIPTION	DATE	APPROVED
1	ALL	A	50242	PIN, PIN SPRING & 2017 FORMAT UPDATE	6/28/2018	HRC

**LATCH
HARDWARE
(STAINLESS
STEEL)**

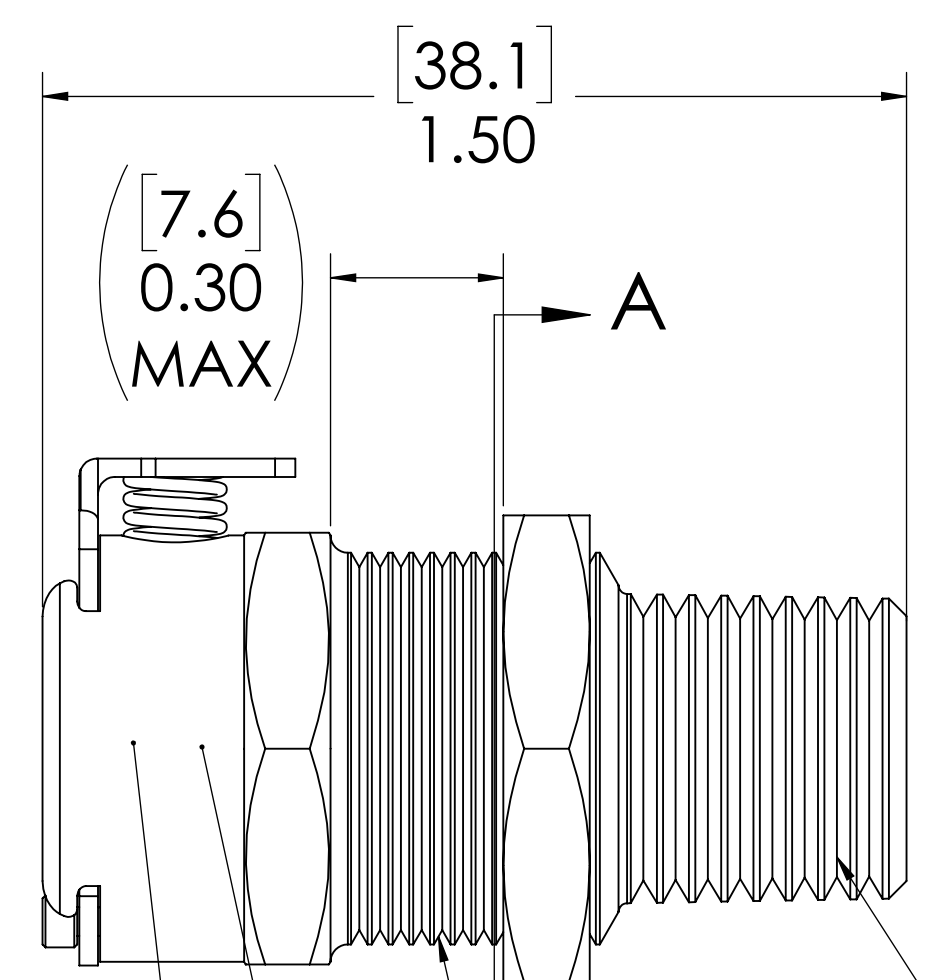
**PANEL NUT,
(BRASS, NICKEL PLATED)
(PACKAGED SEPERATELY)**



**SOCKET, (BRASS, NICKEL
AND CHROME PLATED)**



**VALVE
(ACETAL)**

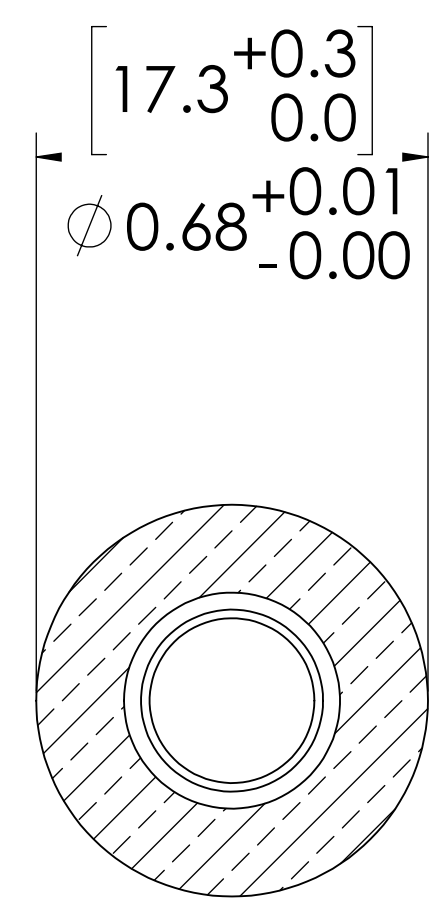


**1/4" NPT
(PIPE THREAD)**

11/16"-24 UNS THREAD

**VALVE SPRING
INTERNAL
(STAINLESS
STEEL)**

**VALVE O-RING
INTERNAL
(BUNA-N)**



**PANEL OPENING
(SECTION A-A)**

NOTES:

- MATERIAL: BRASS
- FINISH: CHROME
- O-RING MATERIAL: BUNA-N
- O-RINGS LUBRICATED WITH FOOD GRADE SILICONE OIL, 350 CST.

FOR REFERENCE ONLY

<small>UNLESS OTHERWISE SPECIFIED: DIMENSIONS ARE IN INCHES TOLERANCES: FRACTIONAL ± 1/32 ANGULAR, MACH ± 0.5 BEND ± 2 ONE PLACE DECIMAL ± 0.1 TWO PLACE DECIMAL ± 0.01 THREE PLACE DECIMAL ± 0.005 TWO PLACE DUAL (mm) [± 0.12]</small>	DRAWN	CBH	8/10/2017	
	CHECKED	HRC	8/10/17	
	ENG APPR.	HRC	6/28/18	
	MFG APPR.	BDB	6/28/18	
PRODUCTION	LS	6/28/18		PART NO: 40CBV-SB12-04
<small>PROPRIETARY AND CONFIDENTIAL THE INFORMATION CONTAINED IN THIS DRAWING IS THE SOLE PROPERTY OF LINKTECH LLC. ANY REPRODUCTION OR DISCLOSURE IN PART OR AS A WHOLE WITHOUT THE WRITTEN PERMISSION OF LINKTECH LLC IS STRICTLY PROHIBITED.</small>	COMMENTS:			DESCRIPTION: LinkTech 40CB Series Male Thread Female, Valved, 1/4" MNPT, Chrome Brass
	SIZE	DWG. NO.	REV	
	C	40CB400048	A	
SCALE: NTS		WEIGHT:	SHEET 1 OF 1	