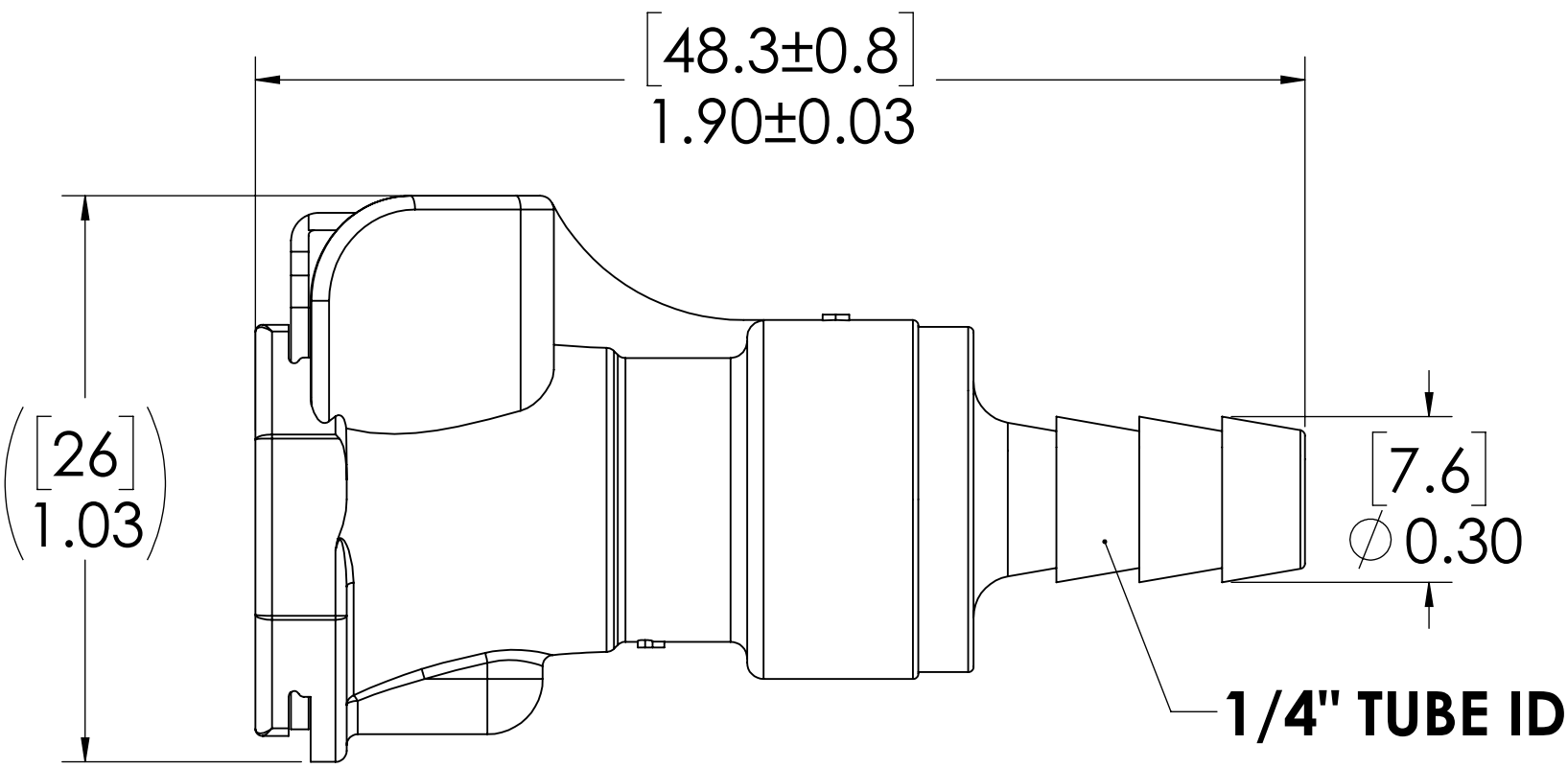
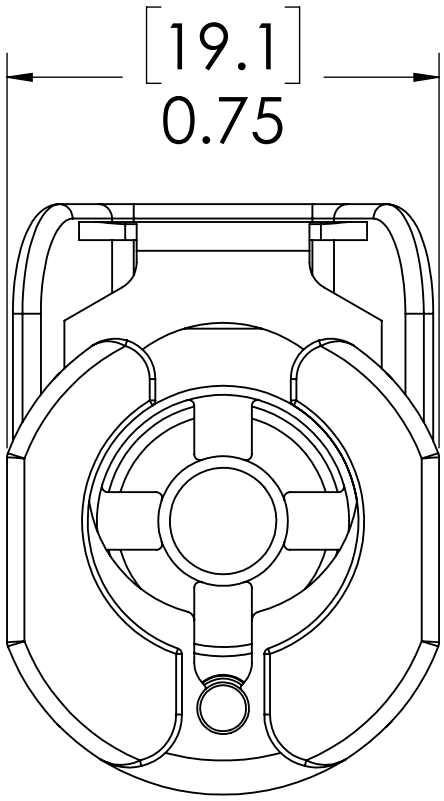
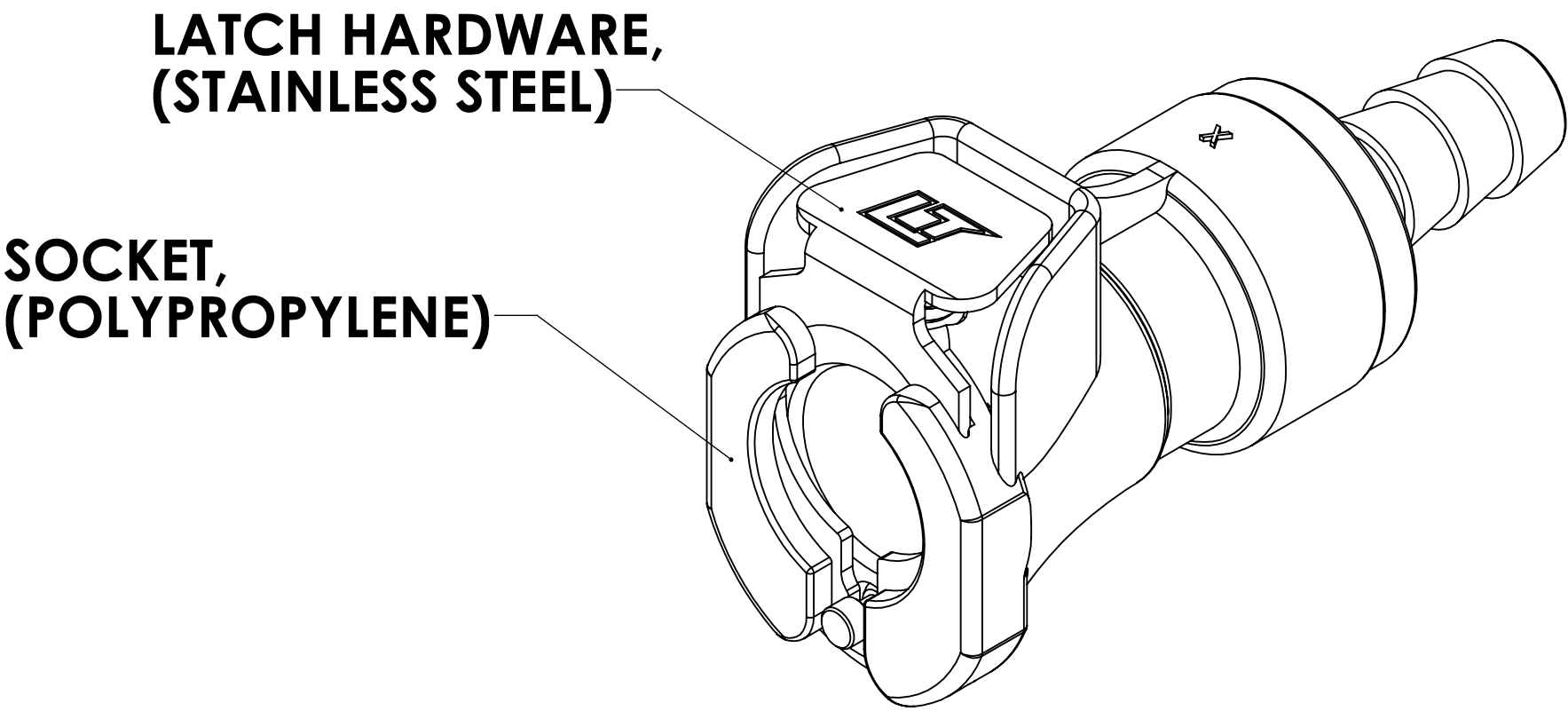



REVISIONS						
SHEET	ZONE	REV.	ECO	DESCRIPTION	DATE	APPROVED
1	A-1	A	CORRECTED DWG NO	2/24/2011	DHJ
1	ALL	B	50253	2017 FORMAT UPDATE	6/28/2018	HRC



FOR REFERENCE ONLY

- NOTES:**
- MATERIAL: POLYPROPYLENE
 - COLOR: GREY

UNLESS OTHERWISE SPECIFIED:		NAME	DATE		
DIMENSIONS ARE IN INCHES TOLERANCES: FRACTIONAL: ±1/32 ANGULAR: MACH ±0.5 BEND ±2 ONE PLACE DECIMAL ±0.1 TWO PLACE DECIMAL ±0.01 THREE PLACE DECIMAL ±0.005 TWO PLACE DUAL (mm) [±0.12]	DRAWN	DHJ	2/15/11	PART NO: 40PP-S2-04 DESCRIPTION: LinkTech 40PP Series Straight Female, Non-valved, 1/4" HB, Molded Grey Color, Polypropylene	
	CHECKED	HRC	6/28/18		
	ENG APPR.	HRC	6/28/18		
	MFG APPR.	BDB	6/28/18		
PROPRIETARY AND CONFIDENTIAL	PRODUCTION	LS	6/28/18	SIZE DWG. NO. REV C 40PP400056 B SCALE: NTS WEIGHT: SHEET 1 OF 1	
THE INFORMATION CONTAINED IN THIS DRAWING IS THE SOLE PROPERTY OF LINKTECH LLC. ANY REPRODUCTION OR DISCLOSURE IN PART OR AS A WHOLE WITHOUT THE WRITTEN PERMISSION OF LINKTECH LLC IS STRICTLY PROHIBITED.	COMMENTS:				