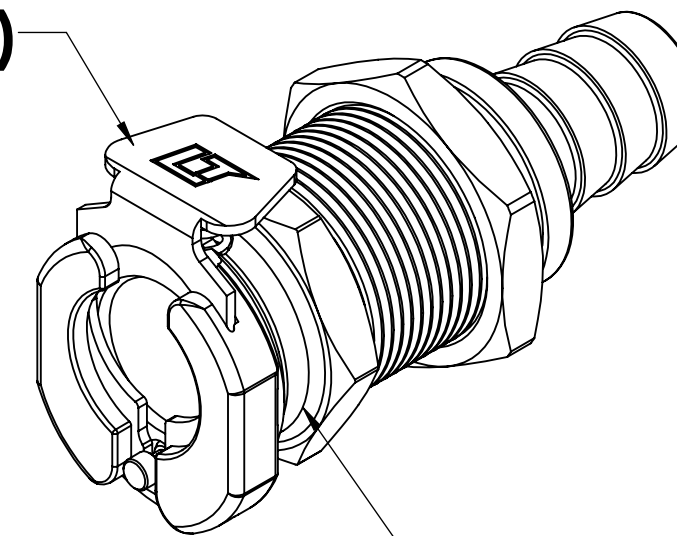
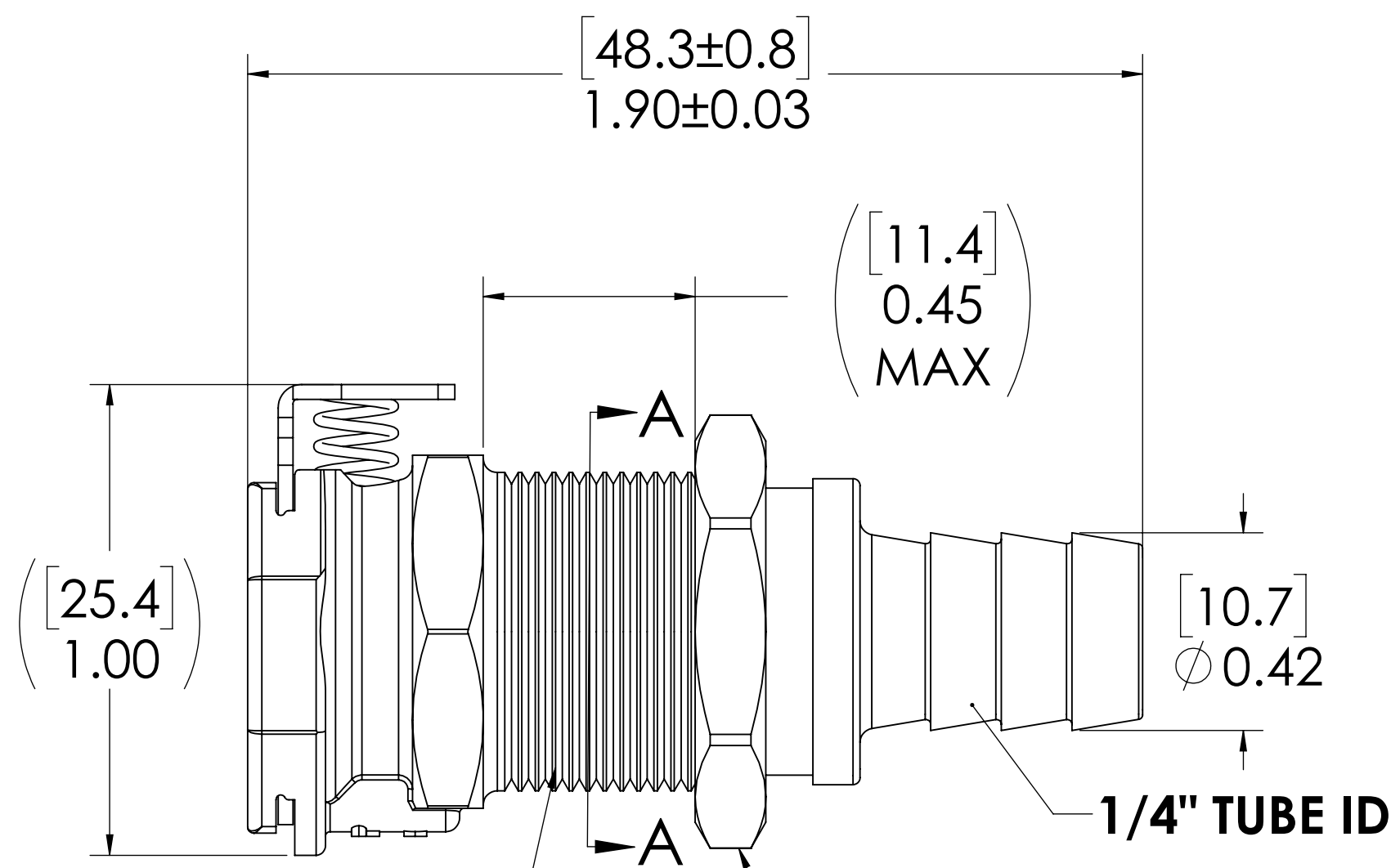
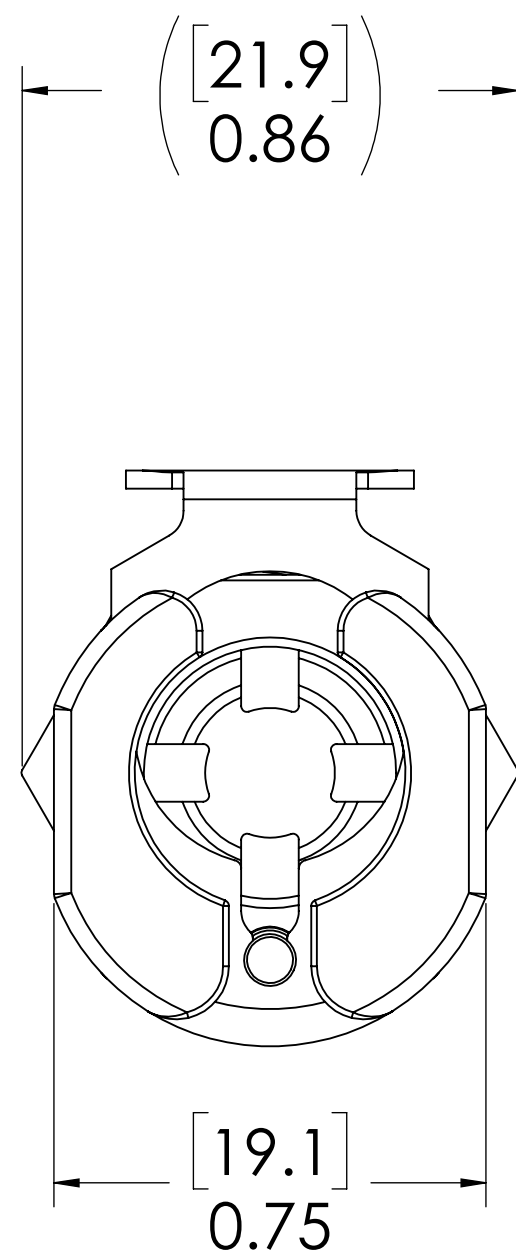


REVISIONS						
SHEET	ZONE	REV.	ECO	DESCRIPTION	DATE	APPROVED
1	A-1	A		CORRECTED DWG NO.	2/24/2011	DHJ
1	ALL	B	50253	UPDATE DWGS TO CURRENT FORMAT & STANDARDS	10/30/2018	HRC

**LATCH HARDWARE
(STAINLESS STEEL)**

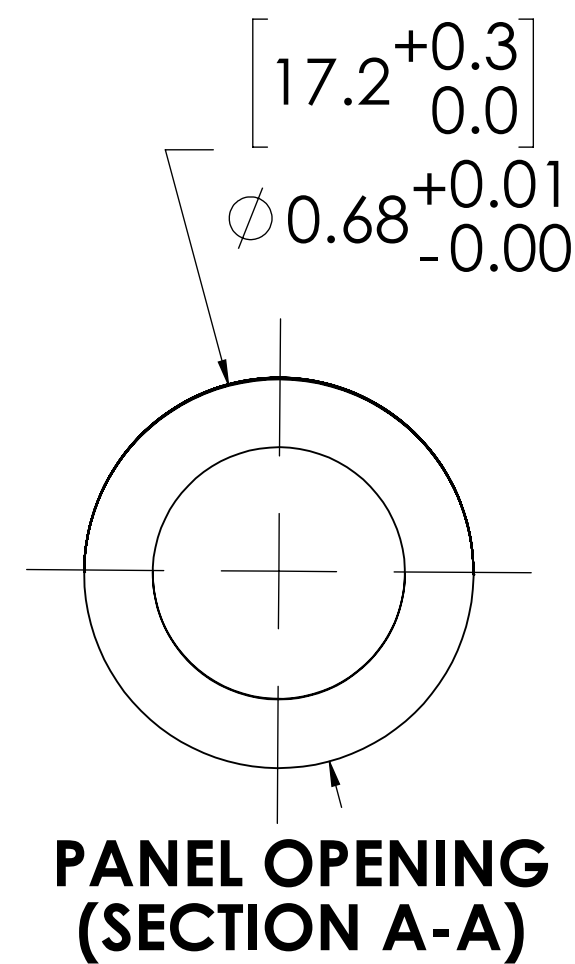


**SOCKET
(POLYPROPYLENE)**



11/16" - 24 UNS THREAD

**PANEL NUT
(BRASS, NICKEL PLATED)
(PACKAGED SEPARATELY)**



**PANEL OPENING
(SECTION A-A)**

- NOTES:**
- MATERIAL: POLYPROPYLENE
 - COLOR: GREY

FOR REFERENCE ONLY

<small>UNLESS OTHERWISE SPECIFIED: DIMENSIONS ARE IN INCHES TOLERANCES: FRACTIONAL ± 1/32 ANGULAR: MACH ± 0.5 BEND ± 2 ONE PLACE DECIMAL ± 0.1 TWO PLACE DECIMAL ± 0.01 THREE PLACE DECIMAL ± 0.005 TWO PLACE DUAL (mm) [±0.12]</small>	DRAWN	LMP	6/11/2018	
	CHECKED	HRC	6/11/2018	
	ENG APPR.	HRC	10/30/18	
	MFG APPR.	BDB	10/30/18	
PRODUCTION	LS	10/30/18		PART NO: 40PP-S3-04 DESCRIPTION: LinkTech 40PP Series, Panel Mt. Socket, Non-Valved, 1/4" HB, Polypropylene
<small>PROPRIETARY AND CONFIDENTIAL THE INFORMATION CONTAINED IN THIS DRAWING IS THE SOLE PROPERTY OF LINKTECH LLC. ANY REPRODUCTION OR DISCLOSURE IN PART OR AS A WHOLE WITHOUT THE WRITTEN PERMISSION OF LINKTECH LLC IS STRICTLY PROHIBITED.</small>				SIZE DWG. NO. REV C 40PP400062 B
<small>COMMENTS:</small>				SCALE: NTS WEIGHT: SHEET 1 OF 1