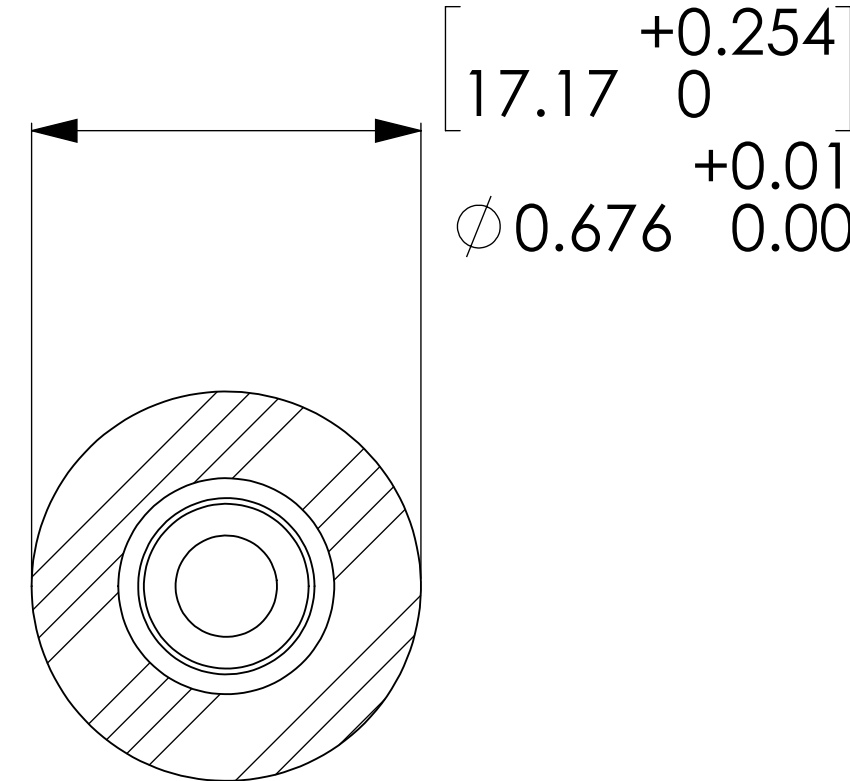
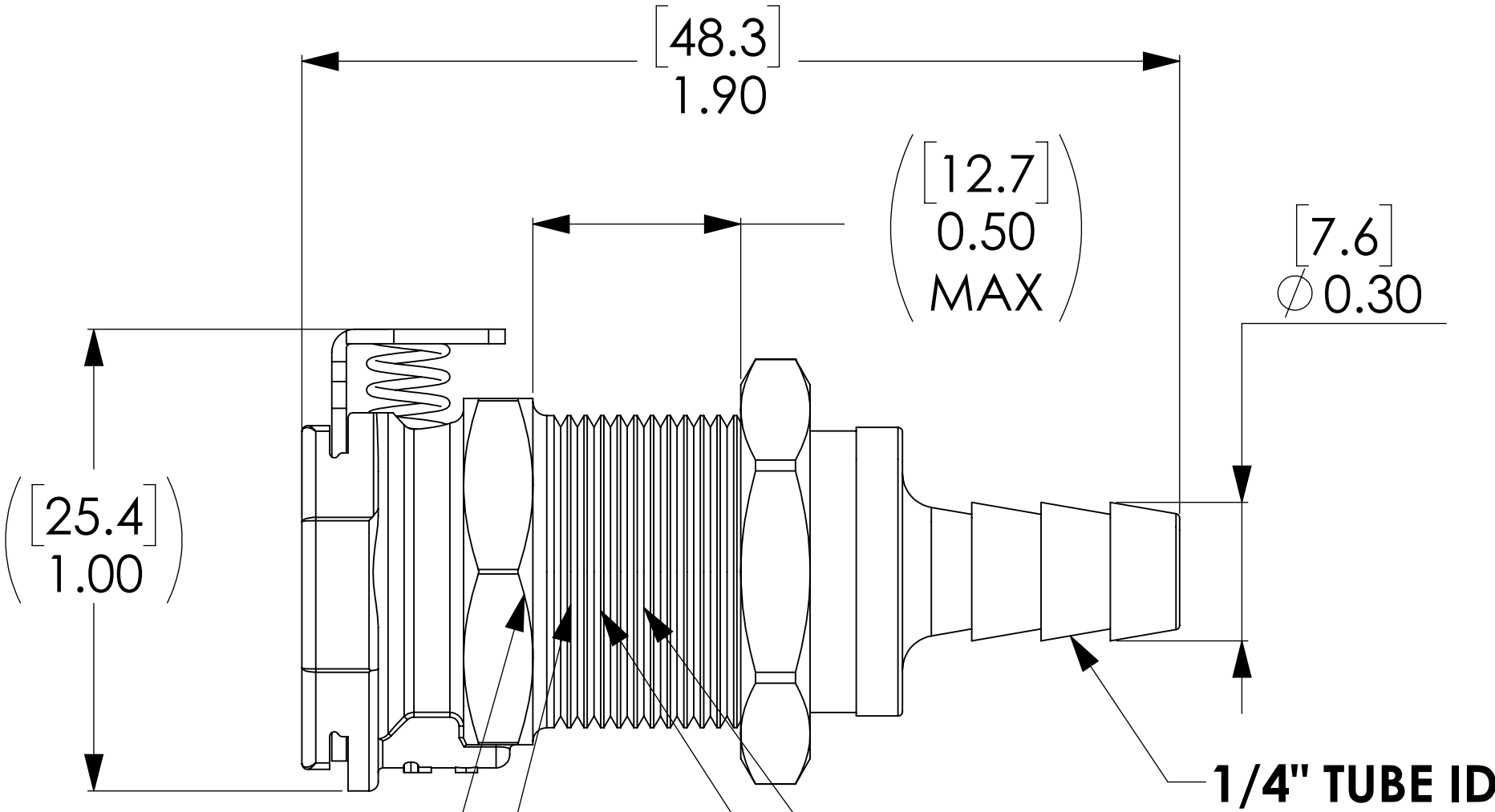
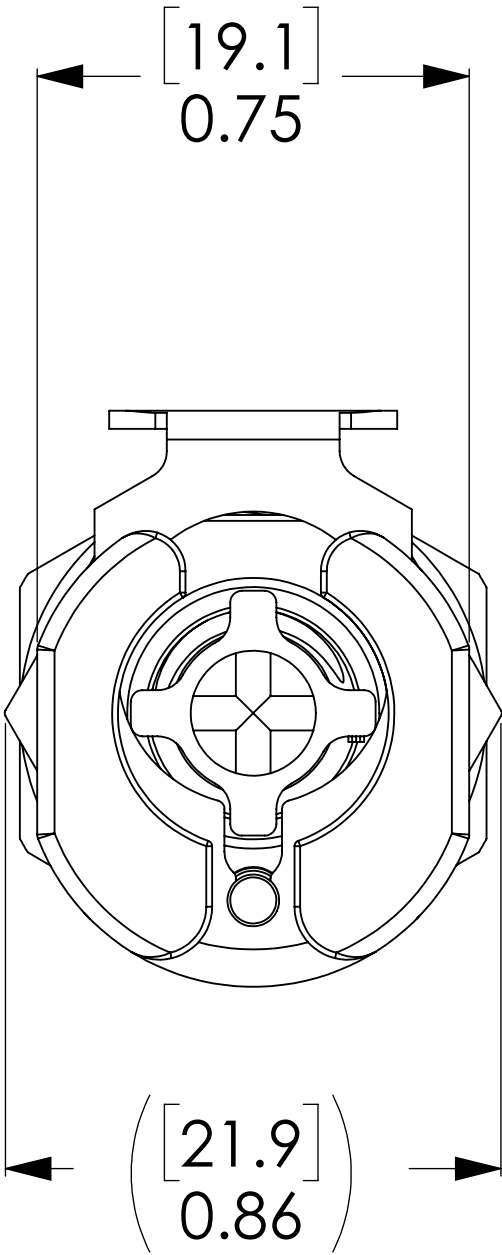


REVISIONS						
SHEET	ZONE	REV.	ECO	DESCRIPTION	DATE	APPROVED
1	ALL	C	50253	FORMAT DWG UPDATE	8/7/2017	

LATCH HARDWEAR,
(STAINLESS STEEL)

SOCKET,
(POLYPROPYLENE)

PANEL NUT,
BRASS, NICKEL PLATED
(13/16 HEX)
PACAKAGED SEPARATELY



O-RING,
INTERNAL
(EPDM)

11/16-24 UNS THREAD
SPRING,
INTERNAL
(STAINLESS STEEL)


VALVE,
INTERNAL
(POLYPROPYLENE)

PANEL OPENING

1/4" TUBE ID

- NOTES:**
- MATERIAL:POLYPROPYLENE.
 - COLOR: LIGHT GRAY.
 - O-RING MATERIAL: EPDM
 - O-RINGS LUBRICATED WITH FOOD GRADE SILICONE OIL, 350 CST.

FOR REFERENCE ONLY

UNLESS OTHERWISE SPECIFIED:				NAME		DATE		
DIMENSIONS ARE IN INCHES TOLERANCES: FRACTIONAL ±1/32 ANGULAR, MACH ±0.5 BEND ±2 ONE PLACE DECIMAL ±0.1 TWO PLACE DECIMAL ±0.01 THREE PLACE DECIMAL ±0.005 TWO PLACE DUAL (mm) [±0.12]				DRAWN	RDA			
THE INFORMATION CONTAINED IN THIS DRAWING IS THE SOLE PROPERTY OF LINKTECH LLC. ANY REPRODUCTION OR DISCLOSURE IN PART OR AS A WHOLE WITHOUT THE WRITTEN PERMISSION OF LINKTECH LLC IS STRICTLY PROHIBITED.				CHECKED	HRC	7/10/2017	PART NO:	
				ENG APPR.	HRC	01-08-18	DESCRIPTION:	
				MFG APPR.	BDB	01-08-18	LinkTech 40PP Series Panel Mt. Female, Valved, 250 HB, Molded Grey Color, Polypropylene	
PURCHASING				RK		01-08-18	SIZE	DWG. NO.
COMMENTS:							C	40PP400064
							SCALE: NTS	WEIGHT:
								REV
								C
							SHEET 1 OF 1	