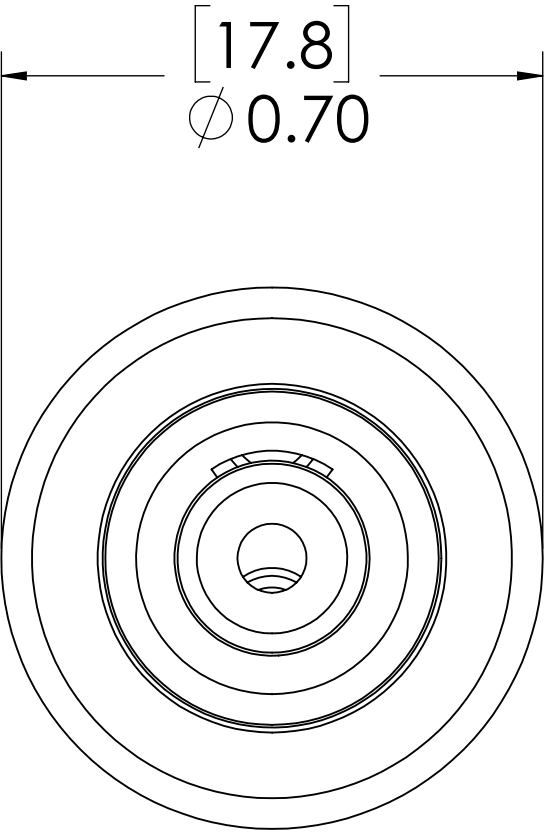
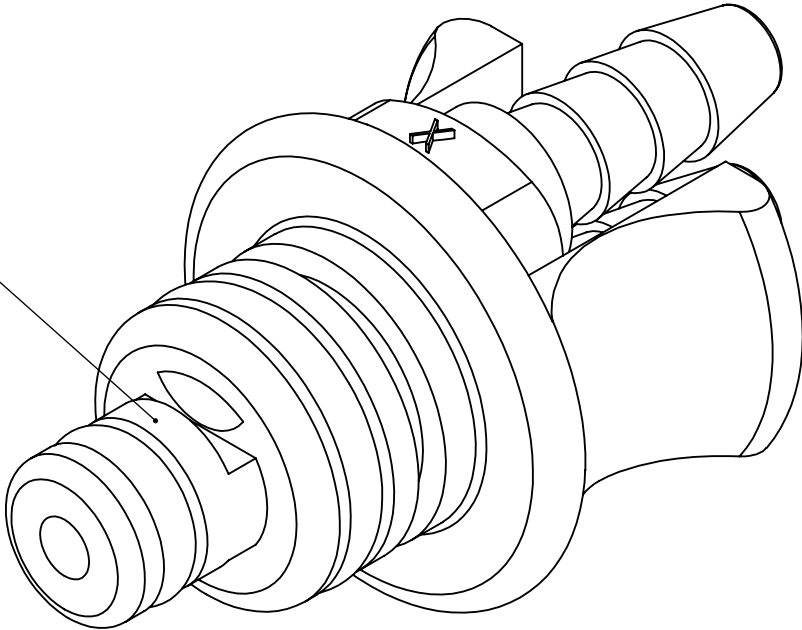
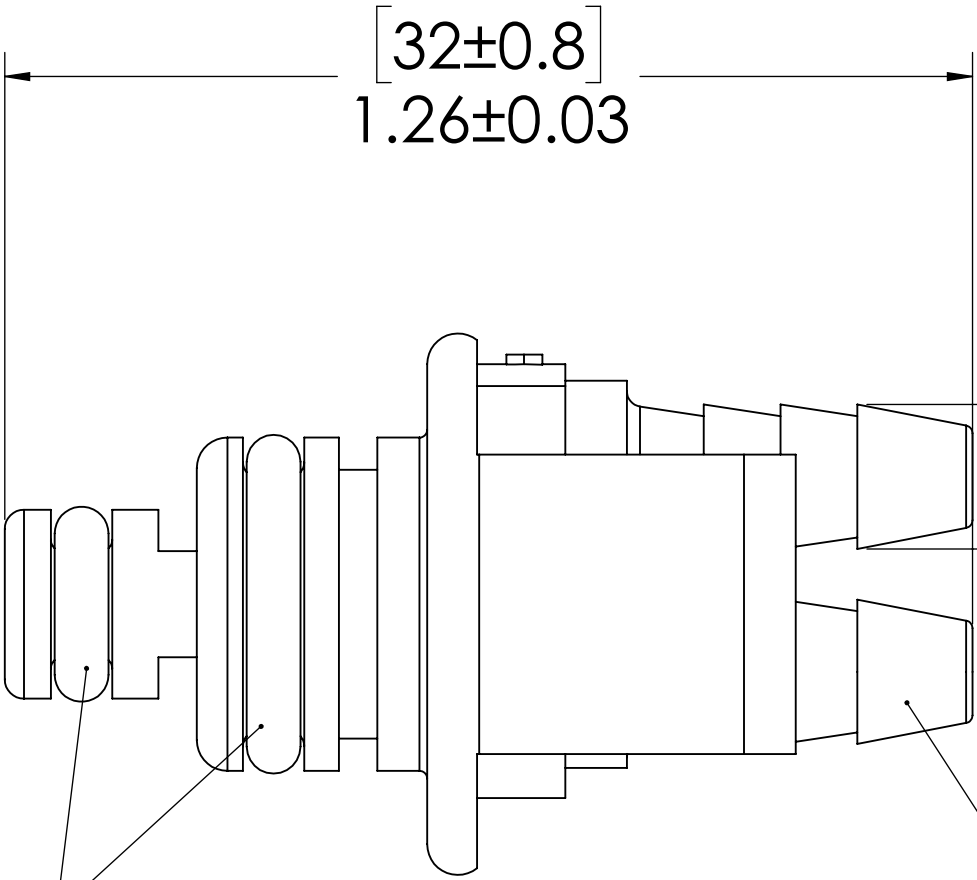


REVISIONS						
SHEET	ZONE	REV.	ECO	DESCRIPTION	DATE	APPROVED
1	A-7	A	...	CHANGED ABS COLOR FROM WHITE TO NATURAL	7/17/2012	DHJ
1	ALL	B	50253	FORMAT UPDATE	4/20/2018	HRC

PLUG,  
(ABS)



O-RING,  
(BUNA-N)




1/8" TUBE ID

**NOTES:**

- MATERIAL: ABS
- COLOR: WHITE
- O-RING MATERIAL: BUNA-N
- O-RINGS LUBRICATED WITH FOOD GRADE SILICONE OIL, 350 CST.

**FOR REFERENCE ONLY**

UNLESS OTHERWISE SPECIFIED:		NAME		DATE				
DIMENSIONS ARE IN INCHES TOLERANCES: FRACTIONAL ± 1/32 ANGULAR: MACH ±0.5 BEND ±2 ONE PLACE DECIMAL ±0.1 TWO PLACE DECIMAL ±0.01 THREE PLACE DECIMAL ±0.001 TWO PLACE DUAL (mm) [±0.12]	DRAWN	DHJ		9/12/11		PART NO:  42AB-PB2-02		
	CHECKED	HRC		10/9/12				
	ENG APPR.	HRC		4/20/18				
	MFG APPR.	BDB		4/20/18				
PROPRIETARY AND CONFIDENTIAL	PURCHASING	RK		4/20/18		DESCRIPTION:  LinkTech 42AB Series Dual Tube Inline Plug, Non-valved, 1/8" HB, ABS		
THE INFORMATION CONTAINED IN THIS DRAWING IS THE SOLE PROPERTY OF LINKTECH LLC. ANY REPRODUCTION OR DISCLOSURE IN PART OR AS A WHOLE WITHOUT THE WRITTEN PERMISSION OF LINKTECH LLC IS STRICTLY PROHIBITED.	COMMENTS:				SIZE		DWG. NO.	REV
					C		42AB400022	B
					SCALE: NTS		WEIGHT:	SHEET 1 OF 1