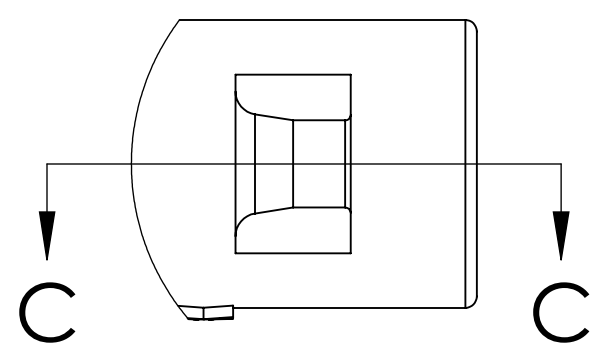
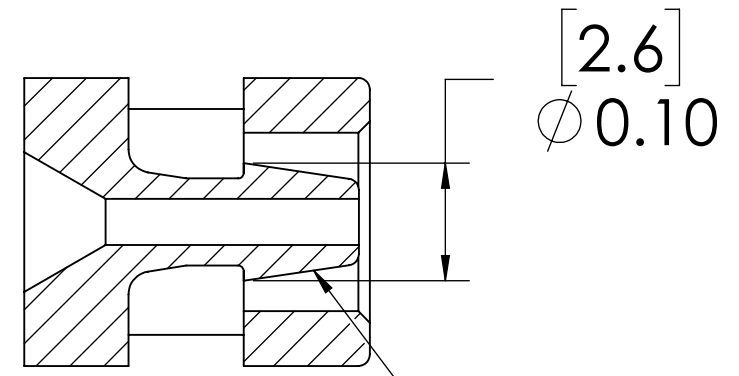


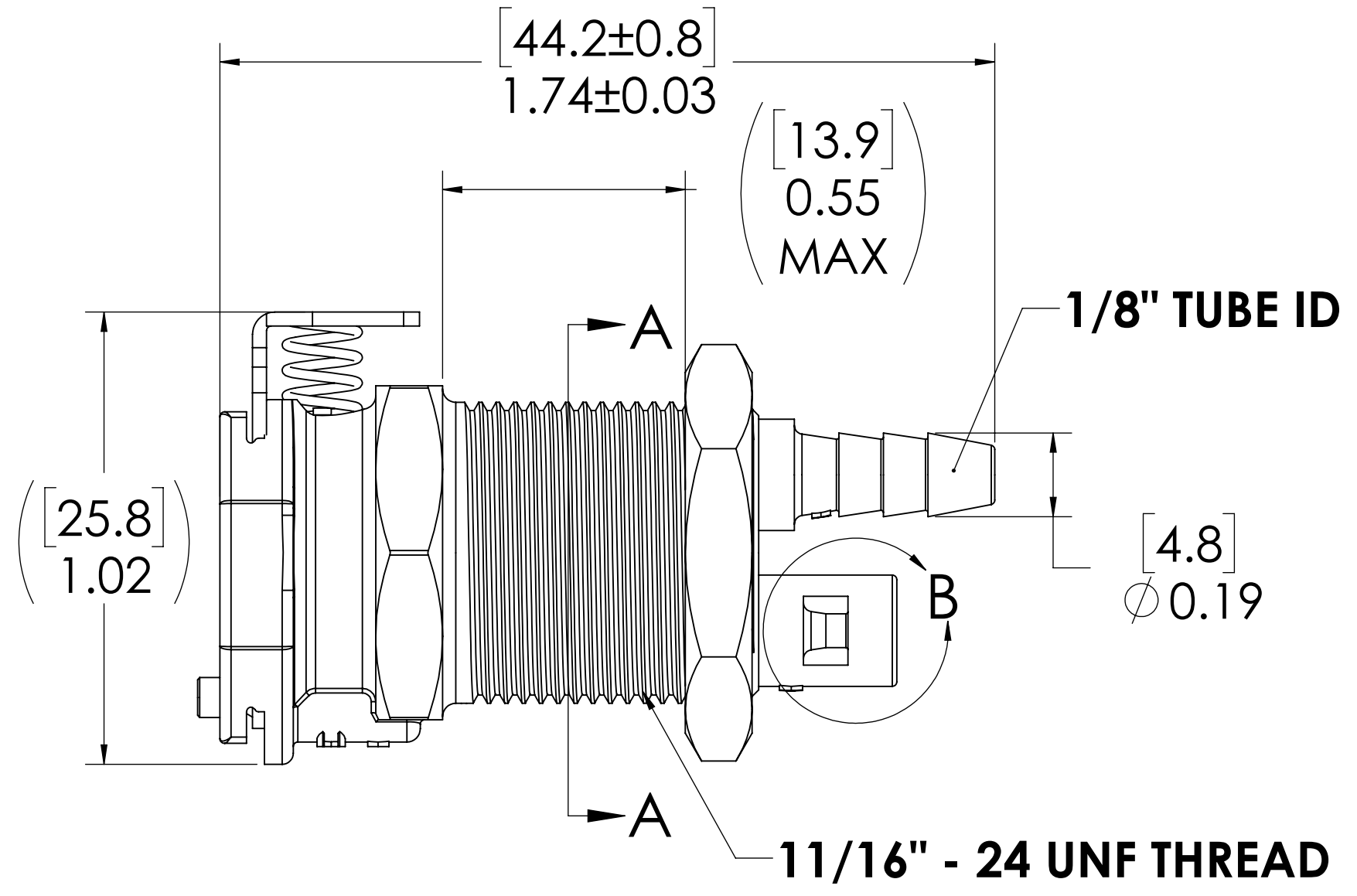
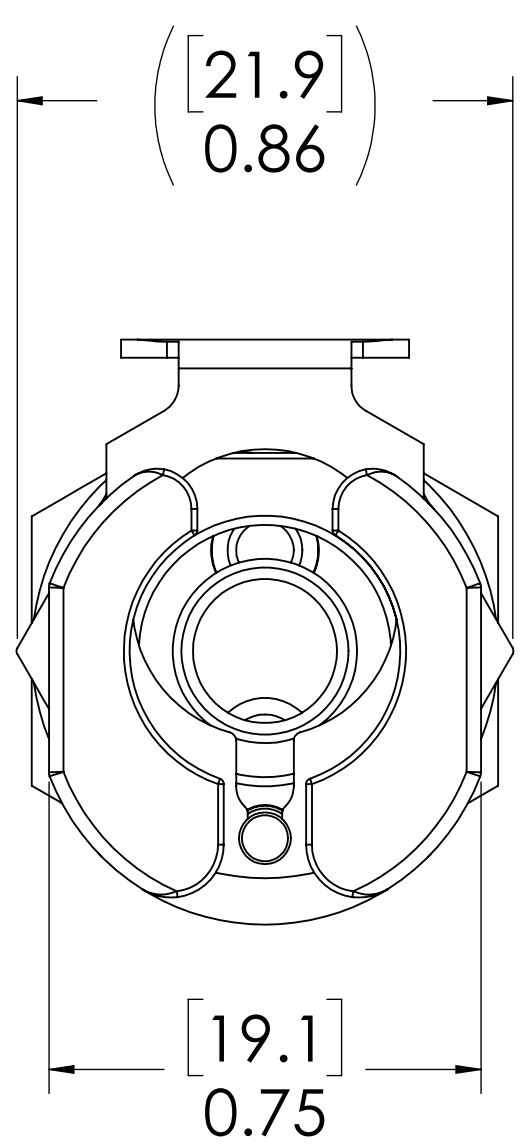
REVISIONS						
SHEET	ZONE	REV.	ECO	DESCRIPTION	DATE	APPROVED
1	ALL	A	50242	UPDATE DWG TO CURRENT FORMAT & STANDARDS	10/18/2018	HRC



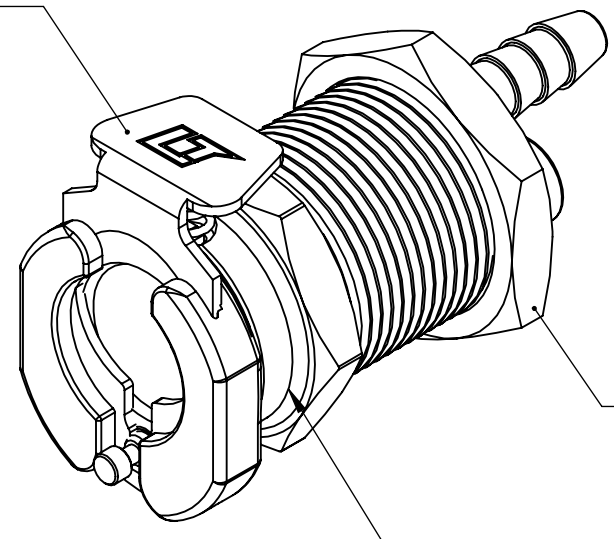
DETAIL B



SECTION C-C
1/16" TUBE ID

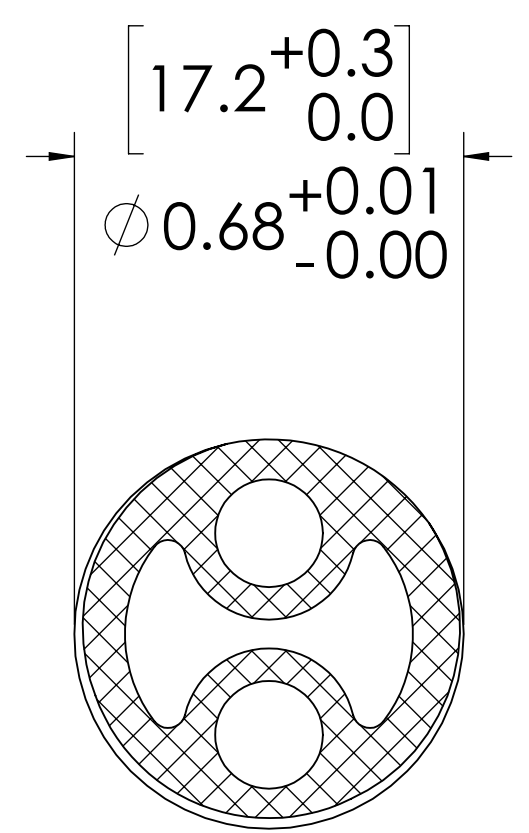


**LATCH HARDWARE
(STAINLESS STEEL)**



**PANEL NUT
(BRASS, NICKEL PLATED)
(PACKAGED SEPARATELY)**

**SOCKET,
(ACETAL)**



**PANEL OPENING
(SECTION A-A)**

- NOTES:**
- MATERIAL: ACETAL
 - COLOR: WHITE

FOR REFERENCE ONLY

<small>UNLESS OTHERWISE SPECIFIED: DIMENSIONS ARE IN INCHES TOLERANCES: FRACTIONAL ±1/32 ANGULAR: MACH ±0.5 BEND ±2 ONE PLACE DECIMAL ±0.1 TWO PLACE DECIMAL ±0.01 THREE PLACE DECIMAL ±0.005 TWO PLACE DUAL (mm) [±0.12]</small>	DRAWN	LMP	7/12/2018	
	CHECKED	HRC	7/12/2018	
	ENG APPR.	HRC	10/18/18	
	MFG APPR.	BDB	10/18/18	
PRODUCTION	LS	10/18/18		PART NO: 42AC-S3-0102 DESCRIPTION: LinkTech 42AC Series, Panel Mt. Two Tube Socket, Non-Valved, 1/16" & 1/8" HB
<small>PROPRIETARY AND CONFIDENTIAL THE INFORMATION CONTAINED IN THIS DRAWING IS THE SOLE PROPERTY OF LINKTECH LLC. ANY REPRODUCTION OR DISCLOSURE IN PART OR AS A WHOLE WITHOUT THE WRITTEN PERMISSION OF LINKTECH LLC IS STRICTLY PROHIBITED.</small>	COMMENTS:			SIZE DWG. NO. C 42AC400026 REV A
SCALE: NTS		WEIGHT:		SHEET 1 OF 1