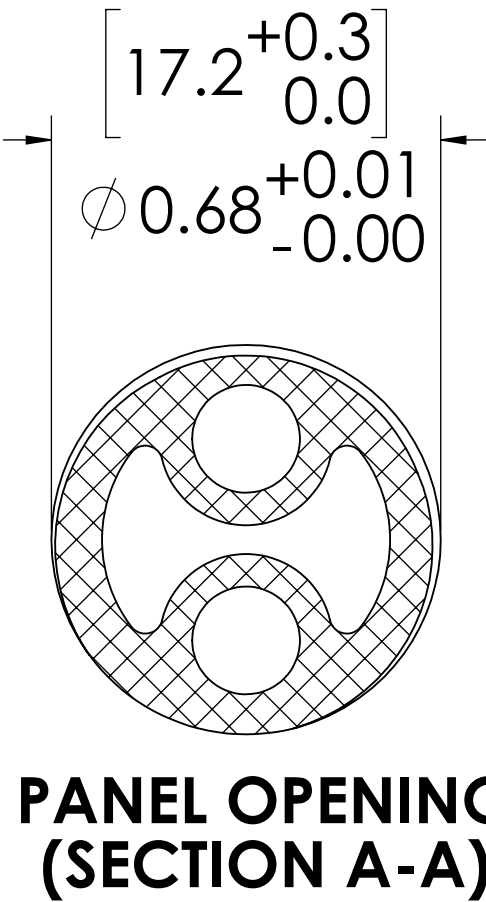
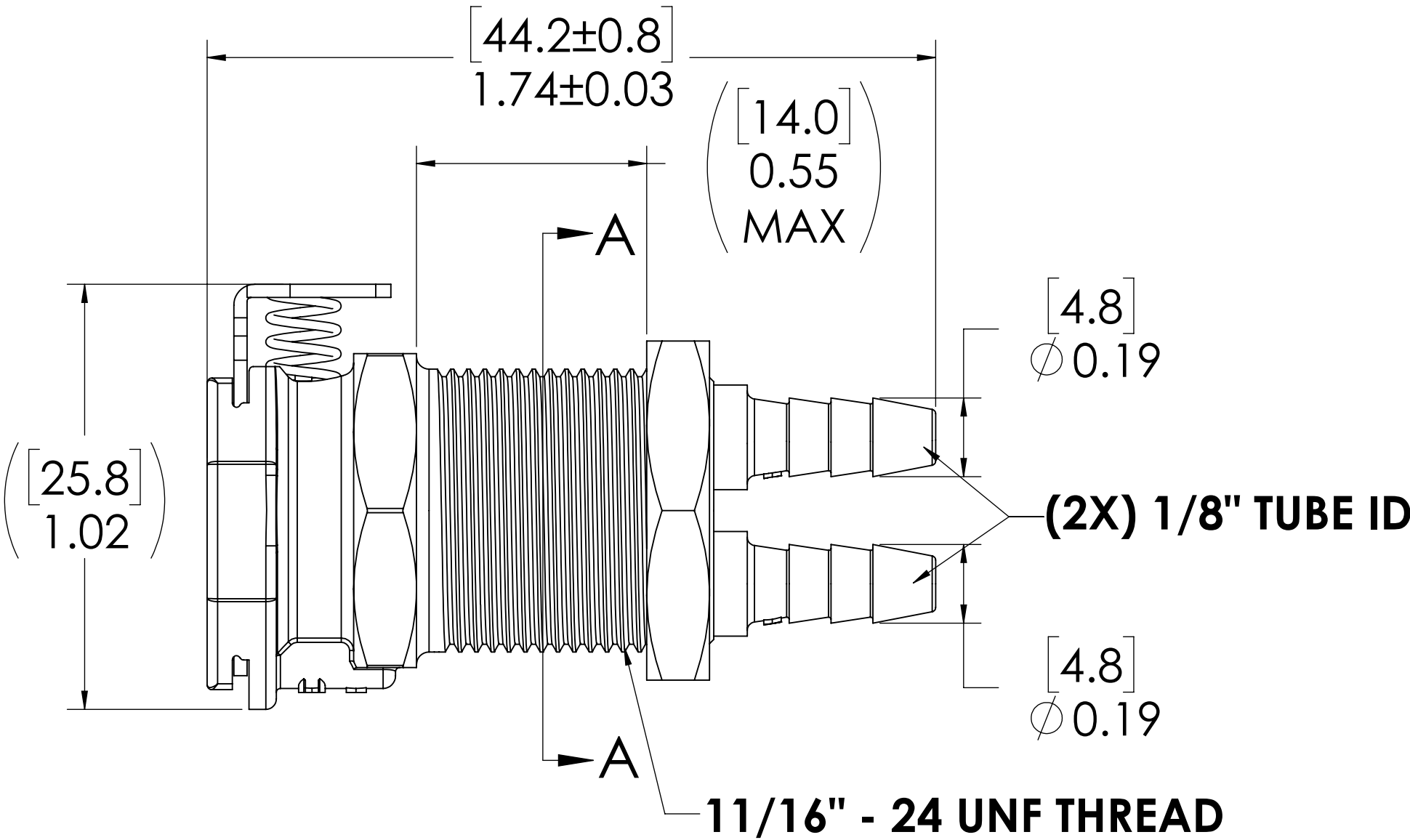
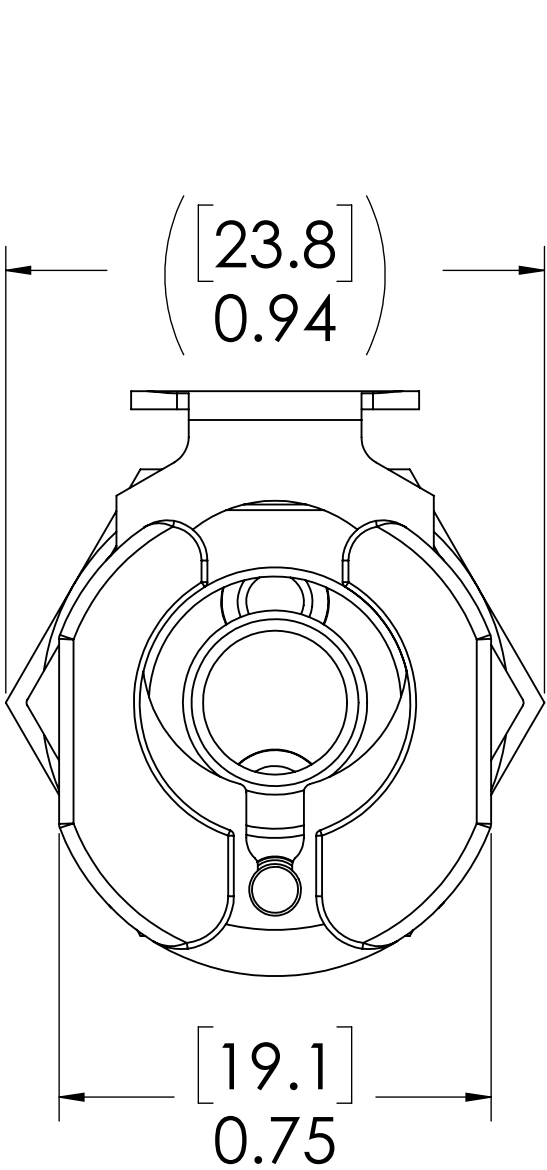


REVISIONS						
SHEET	ZONE	REV.	ECO	DESCRIPTION	DATE	APPROVED
1	ALL	A	50242	UPDATE DWG TO CURRENT FORMAT & STANDARDS	10/18/2018	HRC

LATCH HARDWARE
(STAINLESS STEEL)


PANEL NUT
(BRASS, NICKEL PLATED)
(PACKAGED SEPARATELY)

SOCKET,
(ACETAL)



- NOTES:**
- MATERIAL: ACETAL
 - COLOR: WHITE

FOR REFERENCE ONLY

UNLESS OTHERWISE SPECIFIED:				NAME		DATE	<div> LinkTech 42AC Series, Panel Mt. Two Tube Socket, Non-Valved, 1/8" HB</div>
DIMENSIONS ARE IN INCHES TOLERANCES: FRACTIONAL ±1/32 ANGULAR, MACH ±0.5 BEND ±2 ONE PLACE DECIMAL ±0.1 TWO PLACE DECIMAL ±0.01 THREE PLACE DECIMAL ±0.005 TWO PLACE DECIMAL (mm) ±0.12				DRAWN	LMP	7/12/2018	
				CHECKED	HRC	7/12/2018	
				ENG APPR.	HRC	10/18/18	
				MFG APPR.	BDB	10/18/18	
PROPRIETARY AND CONFIDENTIAL				PRODUCTION	LS	10/18/18	
THE INFORMATION CONTAINED IN THIS DRAWING IS THE SOLE PROPERTY OF LINKTECH LLC. ANY REPRODUCTION OR DISCLOSURE IN PART OR AS A WHOLE WITHOUT THE WRITTEN PERMISSION OF LINKTECH LLC IS STRICTLY PROHIBITED.				COMMENTS:			PART NO: 42AC-S3-02
				SIZE	DWG. NO.	REV	
				C	42AC400024	A	
SCALE: NTS				WEIGHT:		SHEET 1 OF 1	