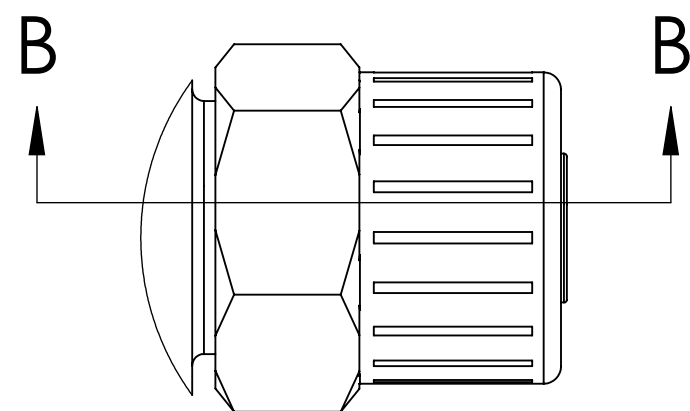
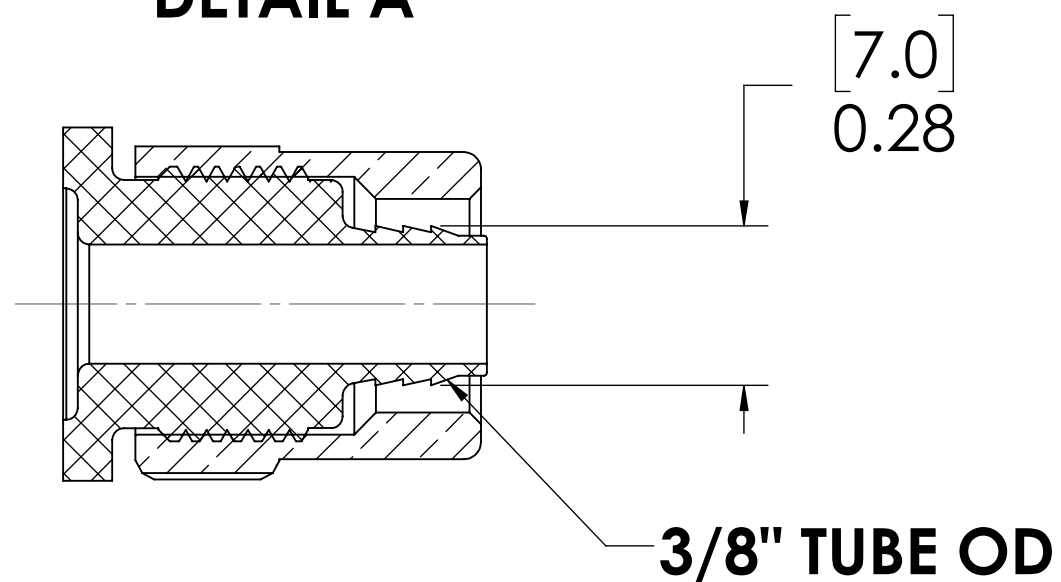


REVISIONS						
SHEET	ZONE	REV.	ECO	DESCRIPTION	DATE	APPROVED
1	ALL	A	50253	DRAFTING UPDATES	4/20/2018	HRC

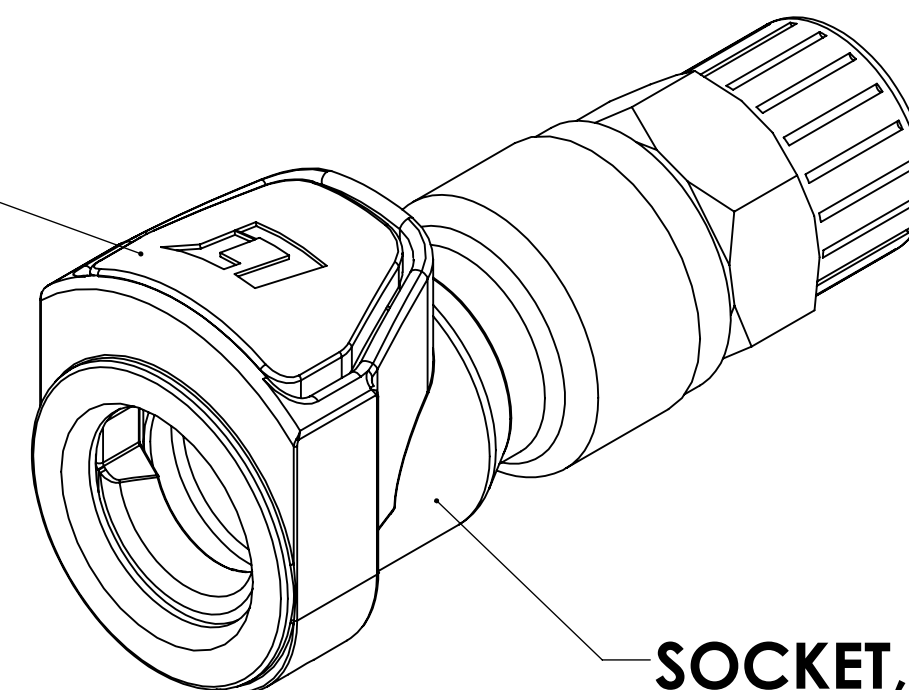


DETAIL A



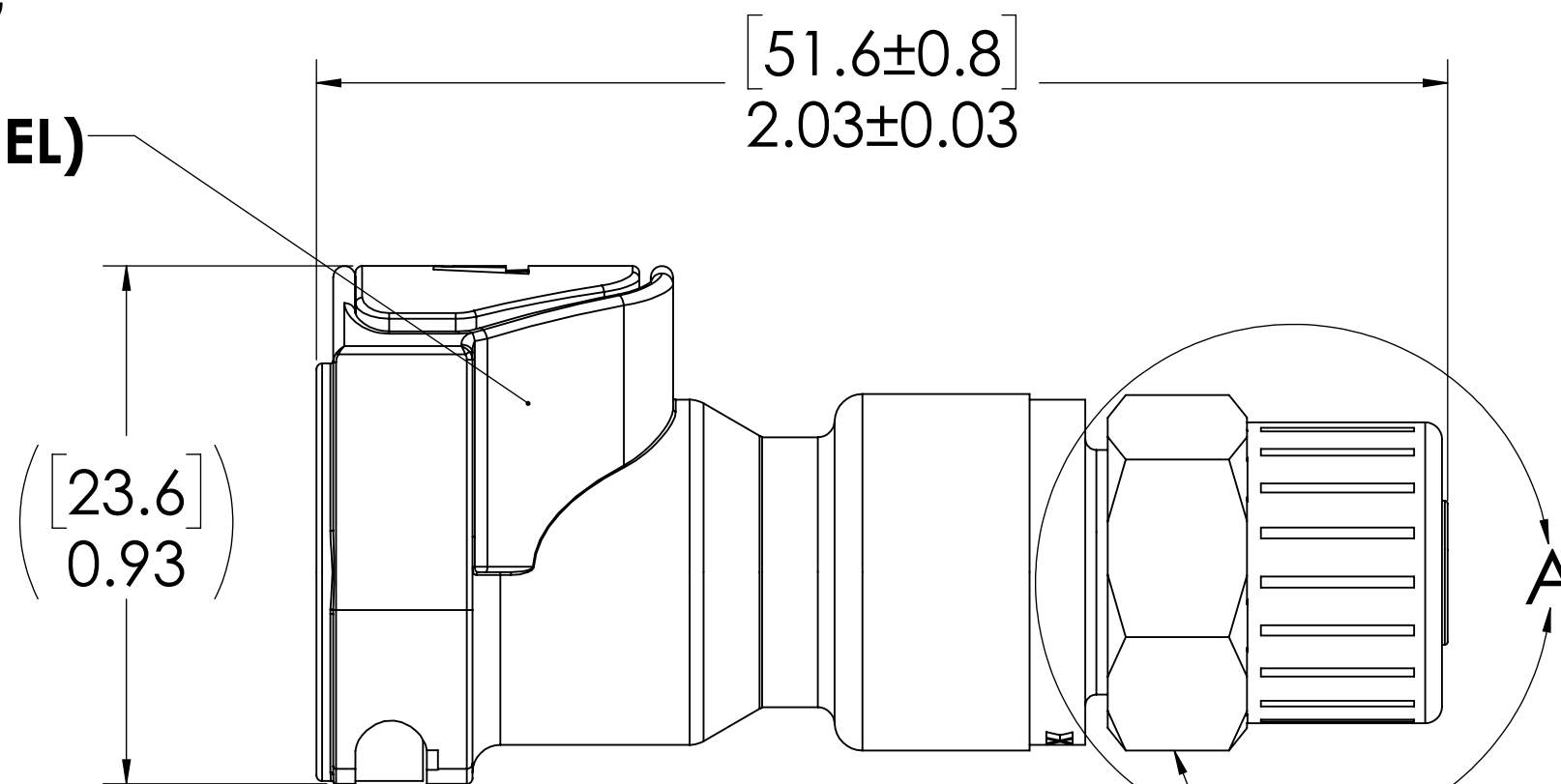
SECTION B-B

**LATCH
(ACETAL)**

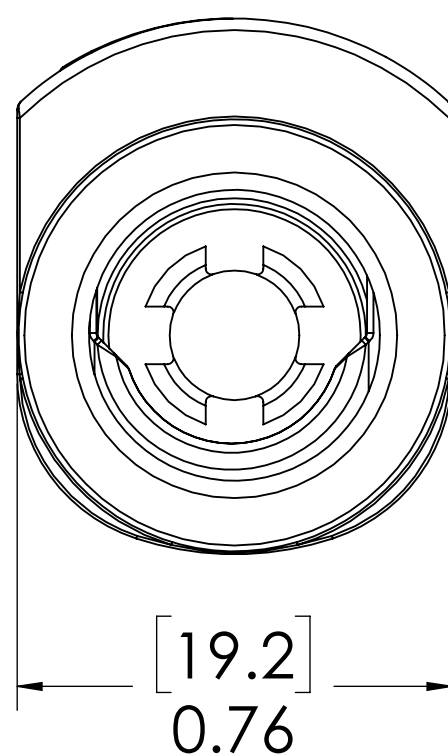


**SOCKET,
(ACETAL)**

**LATCH SPRING
INTERNAL
(STAINLESS STEEL)**



**PTF NUT
(BRASS, NICKEL PLATED)
(PACKAGED SEPERATELY)**



NOTES:

- MATERIAL: ACETAL
- COLOR: NATURAL WHITE

FOR REFERENCE ONLY

<small>UNLESS OTHERWISE SPECIFIED: DIMENSIONS ARE IN INCHES TOLERANCES: FRACTIONAL ±1/32 ANGULAR: MACH: ±0.5 BEND ±2 ONE PLACE DECIMAL ±0.1 TWO PLACE DECIMAL ±0.01 THREE PLACE DECIMAL ±0.005 TWO PLACE DUAL (mm) [±0.12]</small>	DRAWN	MMJ	8-16-17	
	CHECKED	HRC	7/12/17	
	ENG APPR.	HRC	4/20/18	
	MFG APPR.	BDB	4/20/18	
<small>PROPRIETARY AND CONFIDENTIAL THE INFORMATION CONTAINED IN THIS DRAWING IS THE SOLE PROPERTY OF LINKTECH LLC. ANY REPRODUCTION OR DISCLOSURE IN PART OR AS A WHOLE WITHOUT THE WRITTEN PERMISSION OF LINKTECH LLC IS STRICTLY PROHIBITED.</small>	PURCHASING	RK	4/20/18	PART NO: 50AC-S9-06LB <small>DESCRIPTION: LinkTech, 50AC Series Straight Female, Non-valved, 3/8" PTF, Long Body, Natural Acetal</small>
<small>COMMENTS:</small>				<small>SIZE DWG. NO. REV</small> C 50AC500185 A
<small>SCALE: NTS WEIGHT: SHEET 1 OF 1</small>				