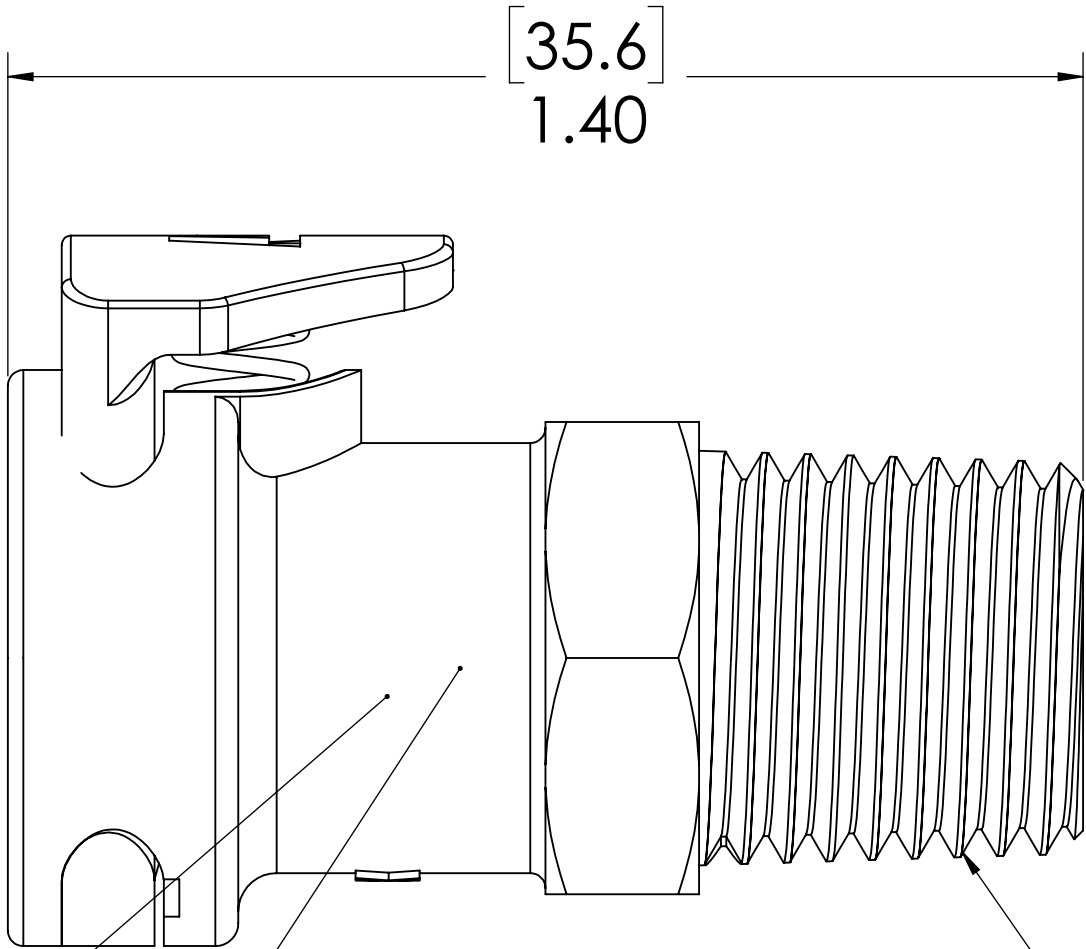
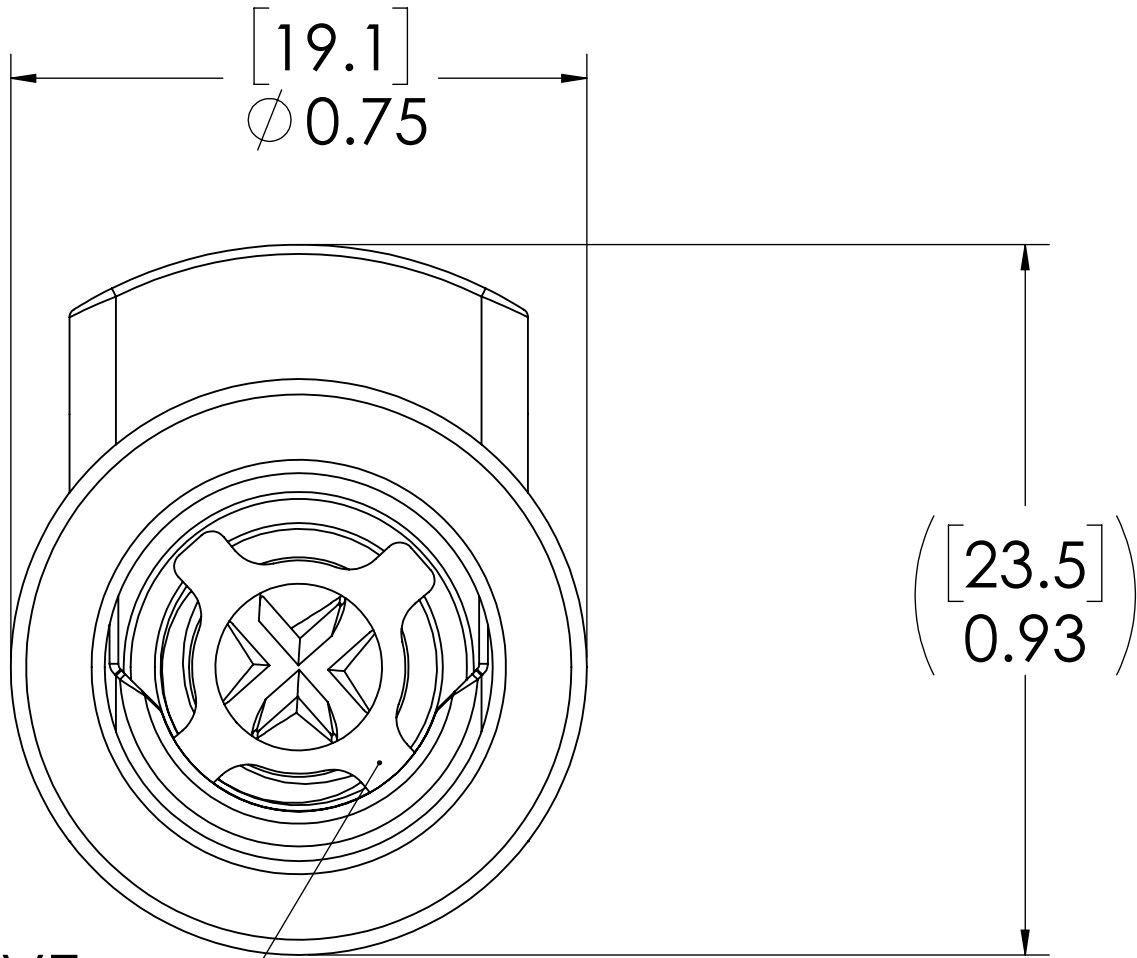
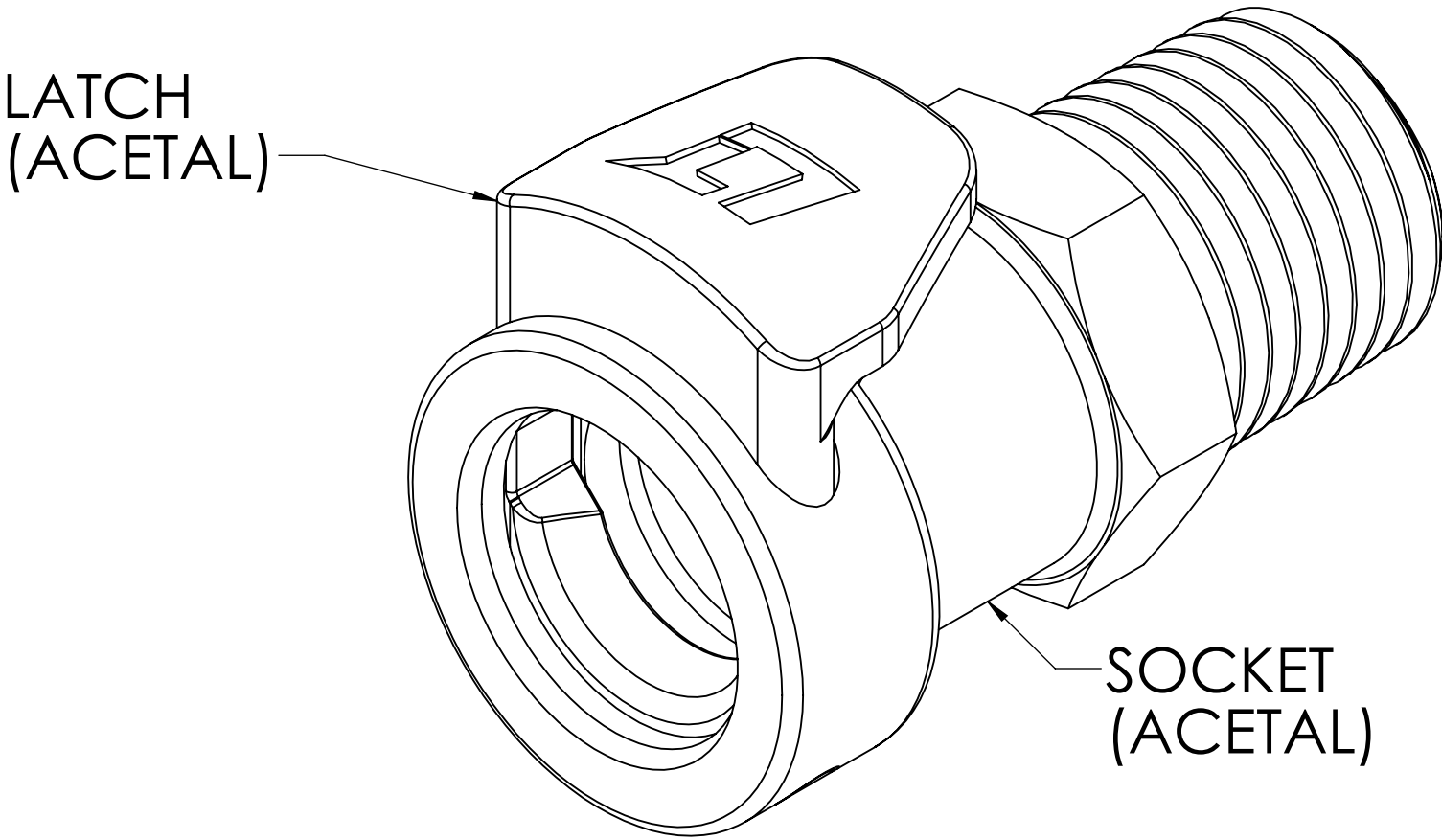


REVISIONS						
SHEET	ZONE	REV.	ECO	DESCRIPTION	DATE	APPROVED
1	ALL	A	50241	SUPERSEDE OLD ASSEMBLY DRAWING, UPDATED MODEL, DWG FORMAT, BOM, AND NOTES	4/26/2017	HRC
1	ALL	B	50253	UPDATE DWG TO CURRENT FORMAT & STANDARDS	10/12/2018	HRC



VALVE
(ACETAL)


VALVE SPRING,
INTERNAL,
(STAINLESS STEEL)

1/4" NPT
(PIPE THREAD)

VALVE O-RING,
INTERNAL,
(BUNA-N)

- NOTES:**
- MATERIAL: ACETAL
 - COLOR: NATURAL WHITE
 - O-RING MATERIAL: BUNA-N
 - O-RINGS LUBRICATED WITH FOOD GRADE SILICONE OIL, 350CST.

FOR REFERENCE ONLY

UNLESS OTHERWISE SPECIFIED:		NAME	DATE			
DIMENSIONS ARE IN INCHES TOLERANCES: FRACTIONAL ±1/32 ANGULAR: MACH ±0.5 BEND ±2 ONE PLACE DECIMAL ±0.1 TWO PLACE DECIMAL ±0.01 THREE PLACE DECIMAL ±0.005 TWO PLACE DECIMAL (mm) [±0.12]	DRAWN	CKE	4/20/2017	PART NO: 50ACV-SB1-04 DESCRIPTION: Linktech 50AC Series Male Thread Female, Valved, 1/4" MNPT, Natural Acetal		
	CHECKED	HRC	4/20/2017			
	ENG APPR.	HRC	04-26-17			
	MFG APPR.	BDB	04-26-17			
PROPRIETARY AND CONFIDENTIAL	Q.A.	JJB	04-26-17	SIZE DWG. NO. REV C 50AC500242 B		
THE INFORMATION CONTAINED IN THIS DRAWING IS THE SOLE PROPERTY OF LINKTECH LLC. ANY REPRODUCTION OR DISCLOSURE IN PART OR AS A WHOLE WITHOUT THE WRITTEN PERMISSION OF LINKTECH LLC IS STRICTLY PROHIBITED.	COMMENTS:					
		SCALE: NTS		WEIGHT:		SHEET 1 OF 1