

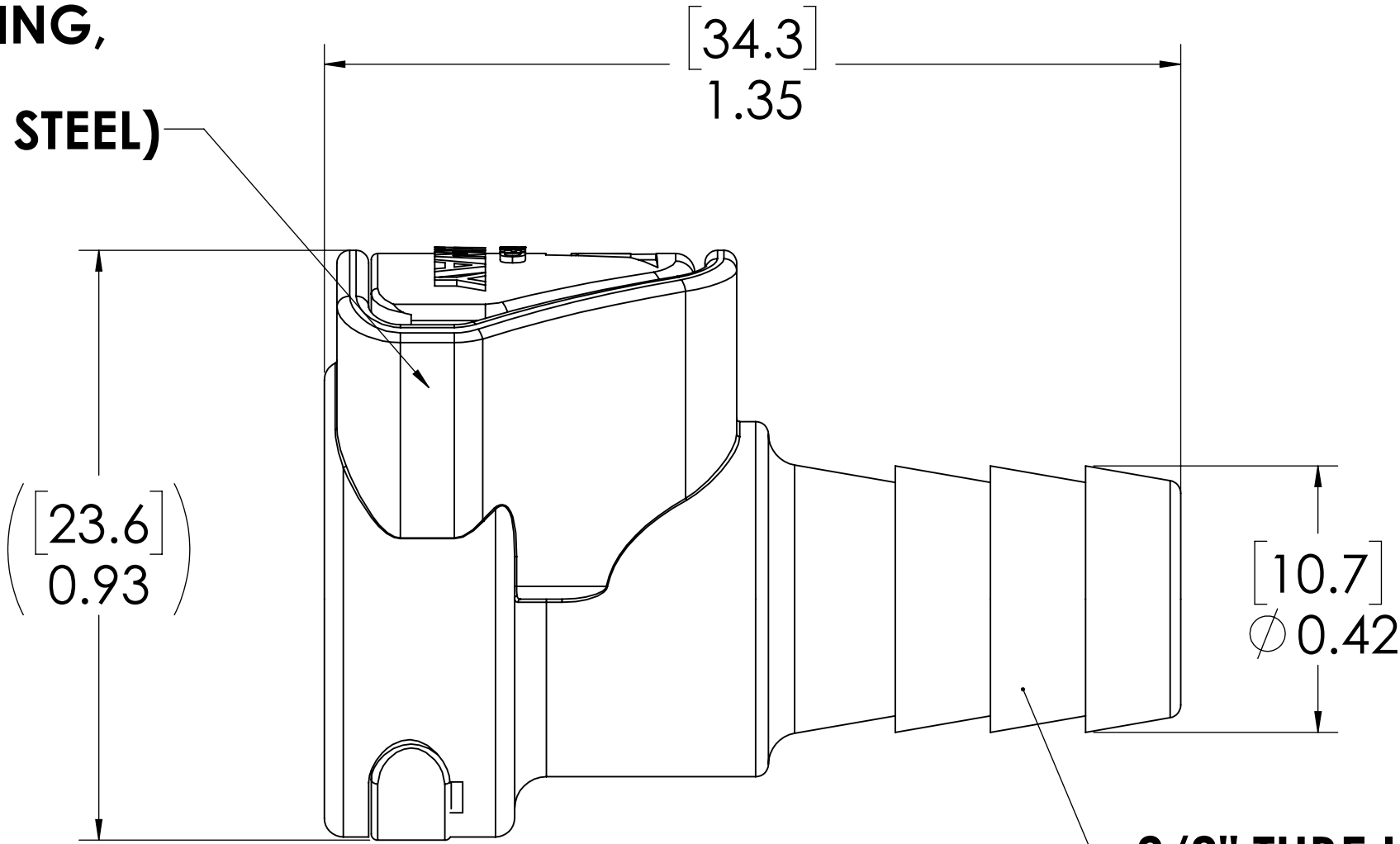
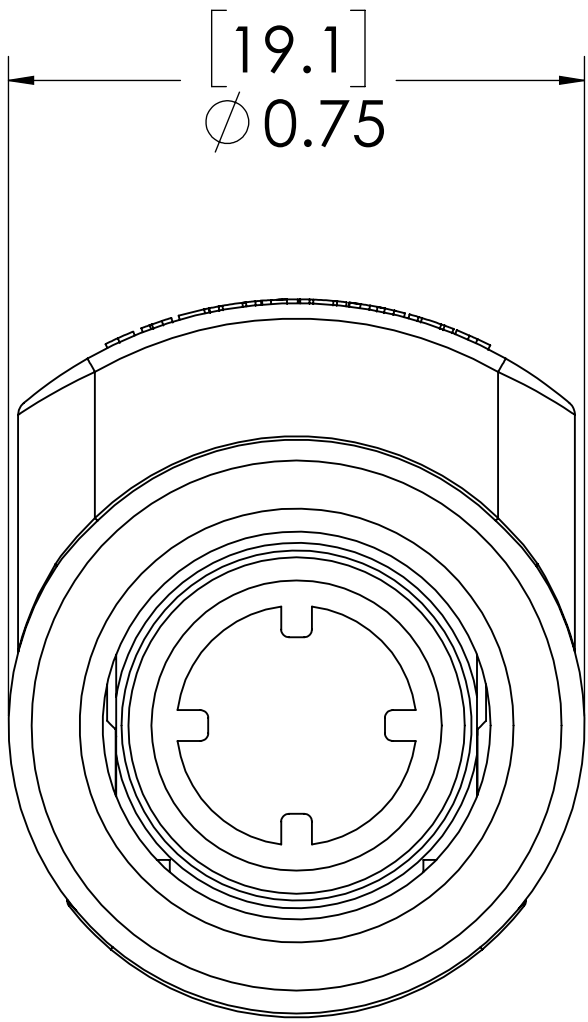
REVISIONS						
SHEET	ZONE	REV.	ECO	DESCRIPTION	DATE	APPROVED
1	ALL	A	50253	UPDATE DWG TO CURRENT FORMAT & STANDARDS	10/16/2018	HRC

BREAKAWAY LATCH  
(ACETAL)

SOCKET  
(ACETAL)


LATCH SPRING,  
INTERNAL,  
(STAINLESS STEEL)

3/8" TUBE ID



- NOTES:**
1. MATERIAL: ACETAL
  2. COLOR: NATURAL WHITE

FOR REFERENCE ONLY

UNLESS OTHERWISE SPECIFIED:						
DIMENSIONS ARE IN INCHES TOLERANCES: FRACTIONAL ± 1/32 ANGULAR, MACH ± 0.5 BEND ± 2 ONE PLACE DECIMAL ± 0.1 TWO PLACE DECIMAL ± 0.01 THREE PLACE DECIMAL ± 0.005 TWO PLACE DUAL (mm) [± 0.12]	DRAWN	LMP	6/25/2018	PART NO: <b>50BAC-S2-06</b>		
	CHECKED	HRC	6/25/2018			
	ENG APPR.	HRC	10/16/18	DESCRIPTION: <b>LinkTech 50BAC Series, Inline Socket, Non-Valved, 3/8" HB, Acetal</b>		
	MFG APPR.	BDB	10/16/18			
PROPRIETARY AND CONFIDENTIAL				PRODUCTION	LS	10/16/18
THE INFORMATION CONTAINED IN THIS DRAWING IS THE SOLE PROPERTY OF LINKTECH LLC. ANY REPRODUCTION OR DISCLOSURE IN PART OR AS A WHOLE WITHOUT THE WRITTEN PERMISSION OF LINKTECH LLC IS STRICTLY PROHIBITED.				COMMENTS:		
				SIZE	DWG. NO.	REV
				<b>C</b>	<b>50BAC500032</b>	<b>A</b>
				SCALE: NTS	WEIGHT:	SHEET 1 OF 1