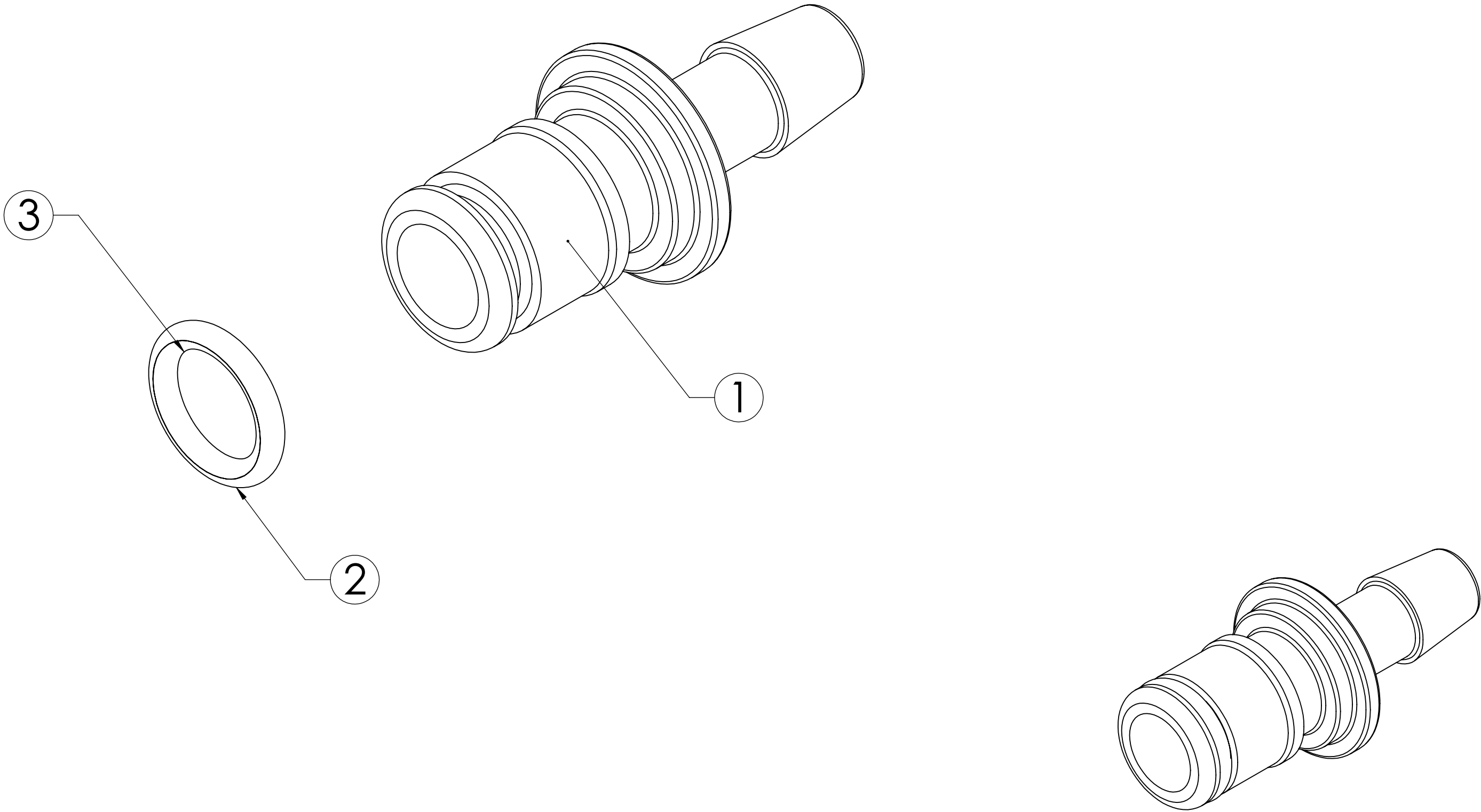



ITEM NO.	PART NUMBER	DESCRIPTION	QTY.
1	C515	PLUG, GP, 3/8" SINGLE HB, NON-VALVED, 50 SERIES	1
2	OE-011-NSF61XL	O-RING, FOOD GRADE EPDM, PLUG SPUD, SIZE -011, 40 SERIES	1
3	LUBE-DCFG200	O-RING LUBRICATION DOW CORNING FOOD GRADE SILICONE OIL	AR

REVISIONS						
SHEET	ZONE	REV.	ECO	DESCRIPTION	DATE	APPROVED
1	ALL	A	50253	UPDATE DWG TO CURRENT FORMAT & STANDARDS	10/30/2018	HRC

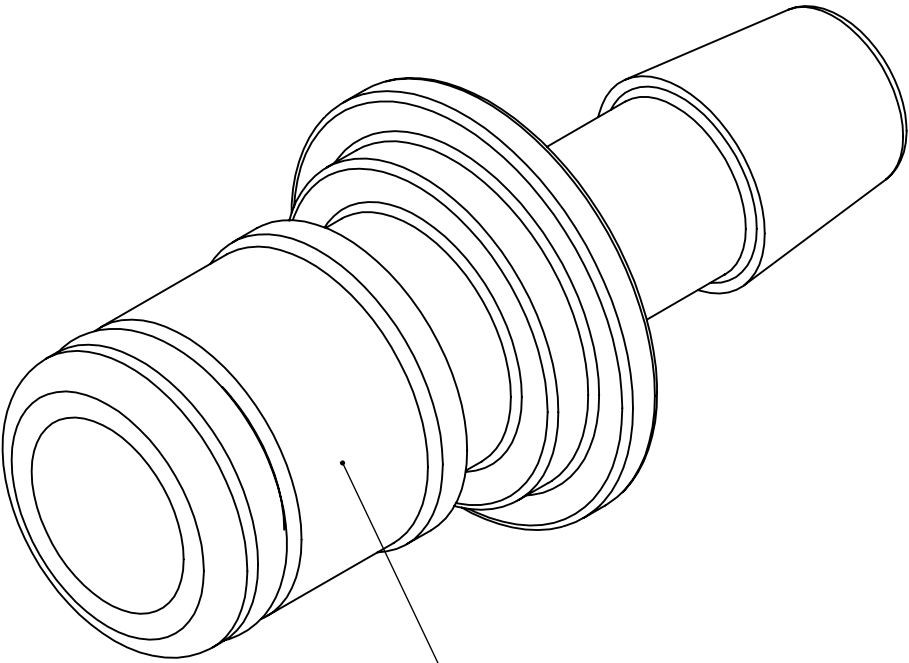


NOTES:

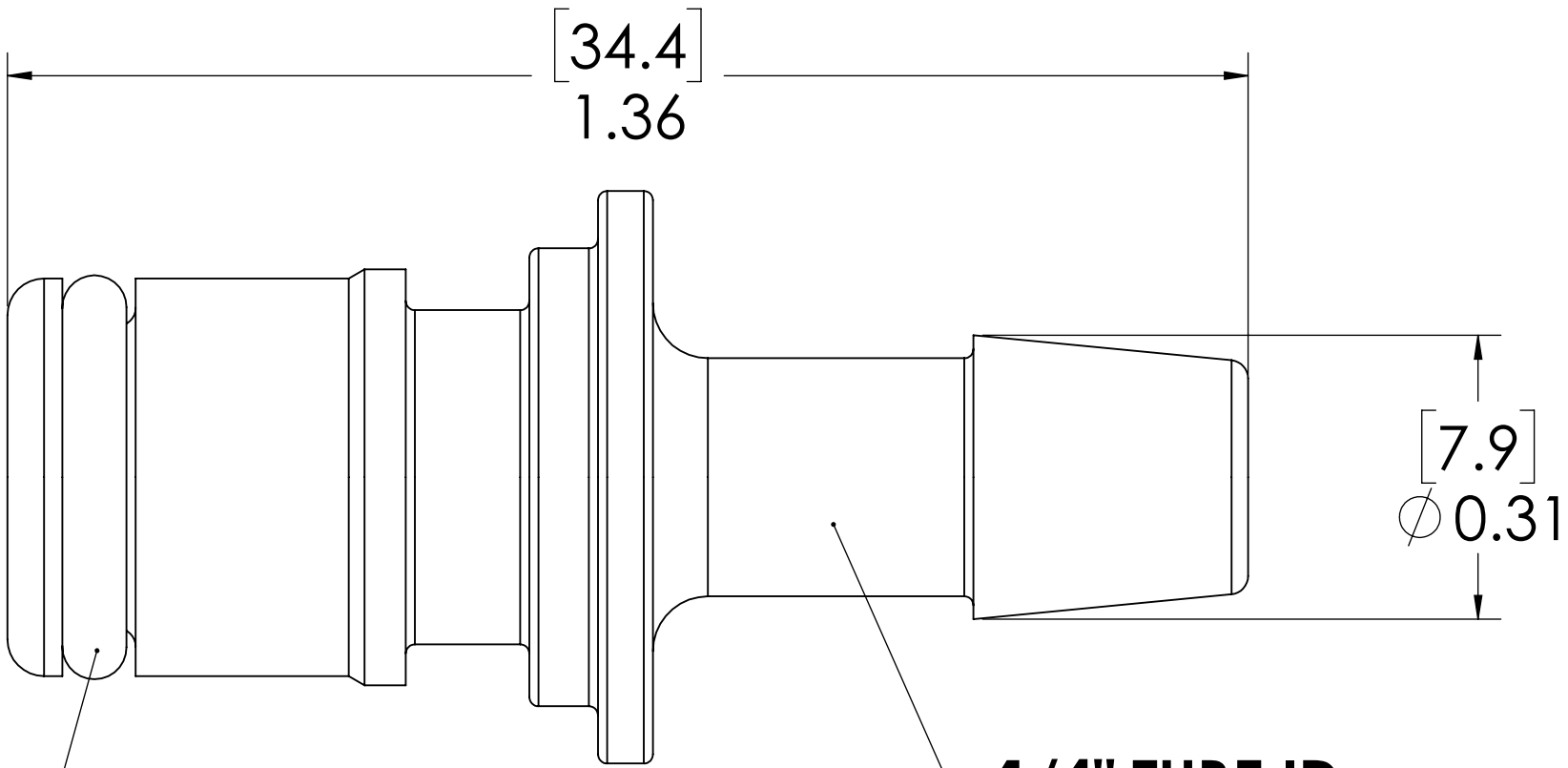
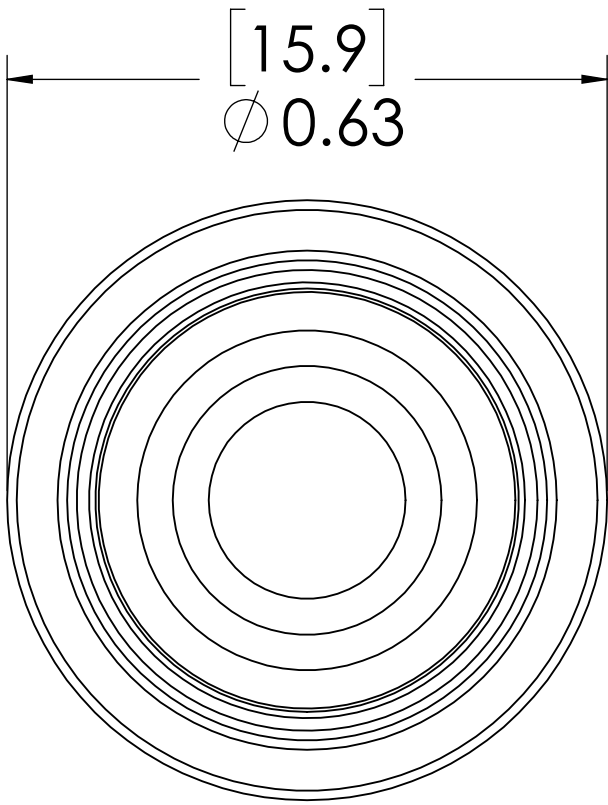
- 1. MATERIAL: GLASS-FILLED POLYPROPYLENE
- 2. COLOR: NATURAL WHITE
- 3. O-RING MATERIAL: EPDM, NSF61
- 4. O-RINGS LUBRICATED WITH FOOD GRADE SILICONE OIL, 350 CST.

UNLESS OTHERWISE SPECIFIED:						
DIMENSIONS ARE IN INCHES TOLERANCES: FRACTIONAL ± 1/32 ANGULAR, MACH ± 0.5 BEND ± 2 ONE PLACE DECIMAL ± 0.1 TWO PLACE DECIMAL ± 0.01 THREE PLACE DECIMAL ± 0.005 TWO PLACE DUAL (mm) [± 0.12]	DRAWN	LMP	6/12/2018	PART NO: <b>50GP-PF5-04</b>		
	CHECKED	HRC	6/12/2018			
	ENG APPR.	HRC	10/30/18			
	MFG APPR.	BDB	10/30/18			
PROPRIETARY AND CONFIDENTIAL	PRODUCTION	LS	10/30/18	DESCRIPTION: LinkTech 40PP Series, Male Thread Socket, Non-Valved, 1/4" NPT, Molded Almond Color, Polypropylene		
THE INFORMATION CONTAINED IN THIS DRAWING IS THE SOLE PROPERTY OF LINKTECH LLC. ANY REPRODUCTION OR DISCLOSURE IN PART OR AS A WHOLE WITHOUT THE WRITTEN PERMISSION OF LINKTECH LLC IS STRICTLY PROHIBITED.	COMMENTS:			SIZE	DWG. NO.	REV
				<b>C</b>	<b>50GP500035</b>	<b>A</b>
SCALE: NTS		WEIGHT:		SHEET 1 OF 1		

REVISIONS						
SHEET	ZONE	REV.	ECO	DESCRIPTION	DATE	APPROVED
1	ALL	A	50253	UPDATE DWG TO CURRENT FORMAT & STANDARDS	10/30/2018	HRC




**PLUG  
(GLASS-FILLED POLYPROPYLENE)**



**O-RING  
EXTERNAL  
(FOOD GRADE EPDM)**

- NOTES:**
- MATERIAL: GLASS-FILLED POLYPROPYLENE
  - COLOR: NATURAL WHITE
  - O-RING MATERIAL: EPDM, NSF61
  - O-RINGS LUBRICATED WITH FOOD GRADE SILICONE OIL, 350 CST.

**FOR REFERENCE ONLY**

UNLESS OTHERWISE SPECIFIED:			NAME	DATE	 <b>LINKTECH™</b> <small>DRINK, CUSHION, THERMOPUR™</small>			
DIMENSIONS ARE IN INCHES TOLERANCES: FRACTIONAL ±1/32 ANGULAR: MACH ±0.5 BEND ±2 ONE PLACE DECIMAL ±0.1 TWO PLACE DECIMAL ±0.01 THREE PLACE DECIMAL ±0.005 TWO PLACE DECIMAL (mm) [±0.12]	DRAWN	LMP	6/12/2018	PART NO: <b>50GP-PF5-04</b>				
	CHECKED	HRC	6/12/2018					
	ENG APPR.	HRC	10/30/18					
	MFG APPR.	BDB	10/30/18					
	PRODUCTION	LS	10/30/18					
PROPRIETARY AND CONFIDENTIAL			COMMENTS:			DESCRIPTION: LinkTech 40PP Series, Male Thread Socket, Non-Valved, 1/4" NPT, Molded Almond Color, Polypropylene		
THE INFORMATION CONTAINED IN THIS DRAWING IS THE SOLE PROPERTY OF LINKTECH LLC. ANY REPRODUCTION OR DISCLOSURE IN PART OR AS A WHOLE WITHOUT THE WRITTEN PERMISSION OF LINKTECH LLC IS STRICTLY PROHIBITED.								
			SIZE	DWG. NO.	REV			
			<b>C</b>	<b>50GP500035</b>	<b>A</b>			
			SCALE: NTS		WEIGHT:		SHEET 1 OF 1	