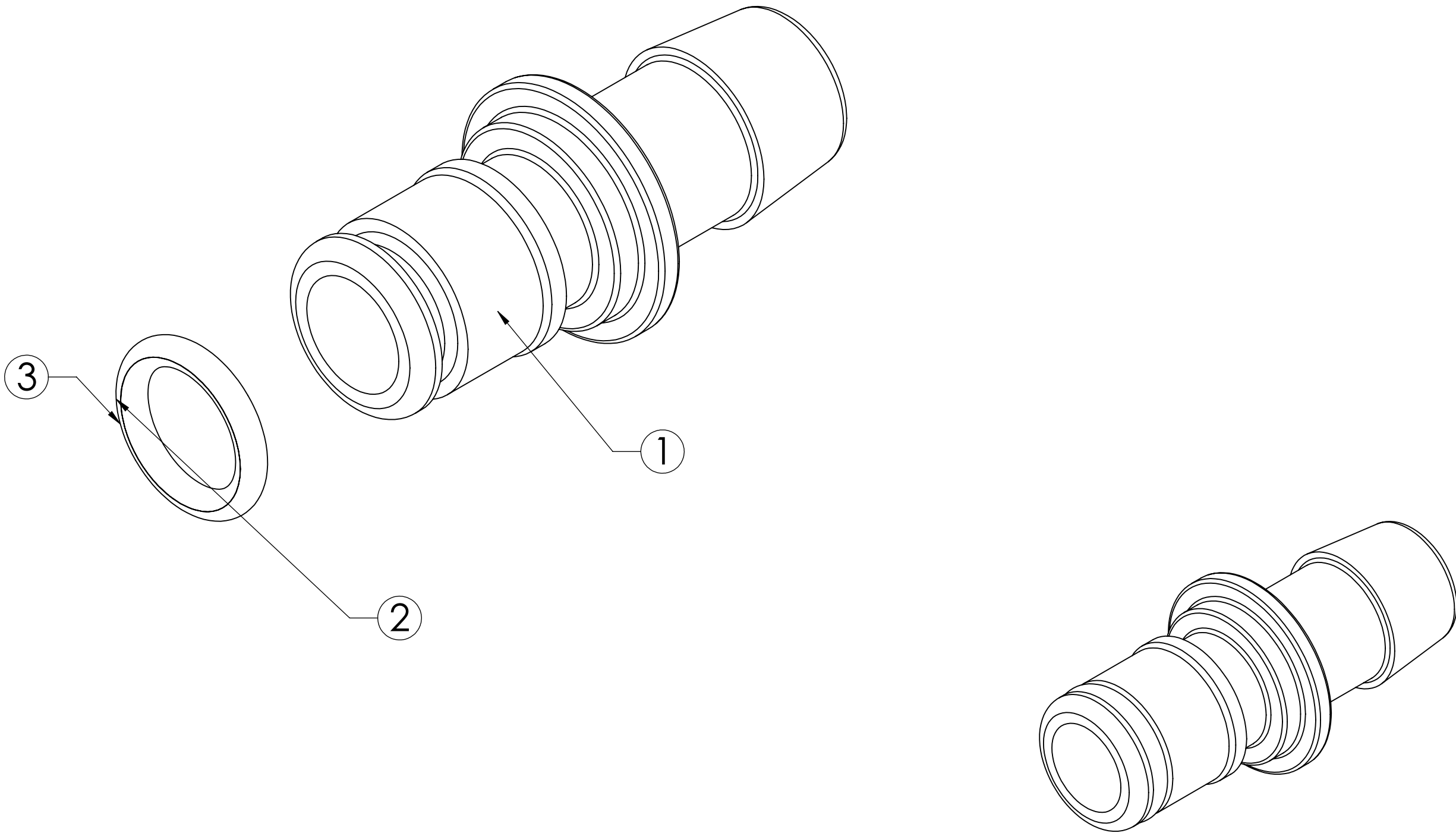



ITEM NO.	PART NUMBER	DESCRIPTION	QTY.
1	C506	PLUG, GP, 3/8" SINGLE HB, NON-VALVED, 50 SERIES	1
2	OE-011-NSF61XL	O-RING, FOOD GRADE EPDM, PLUG SPUD, SIZE -011	1
3	LUBE-DCFG200	O-RING LUBRICATION DOW CORNING FOOD GRADE SILICONE OIL	AR

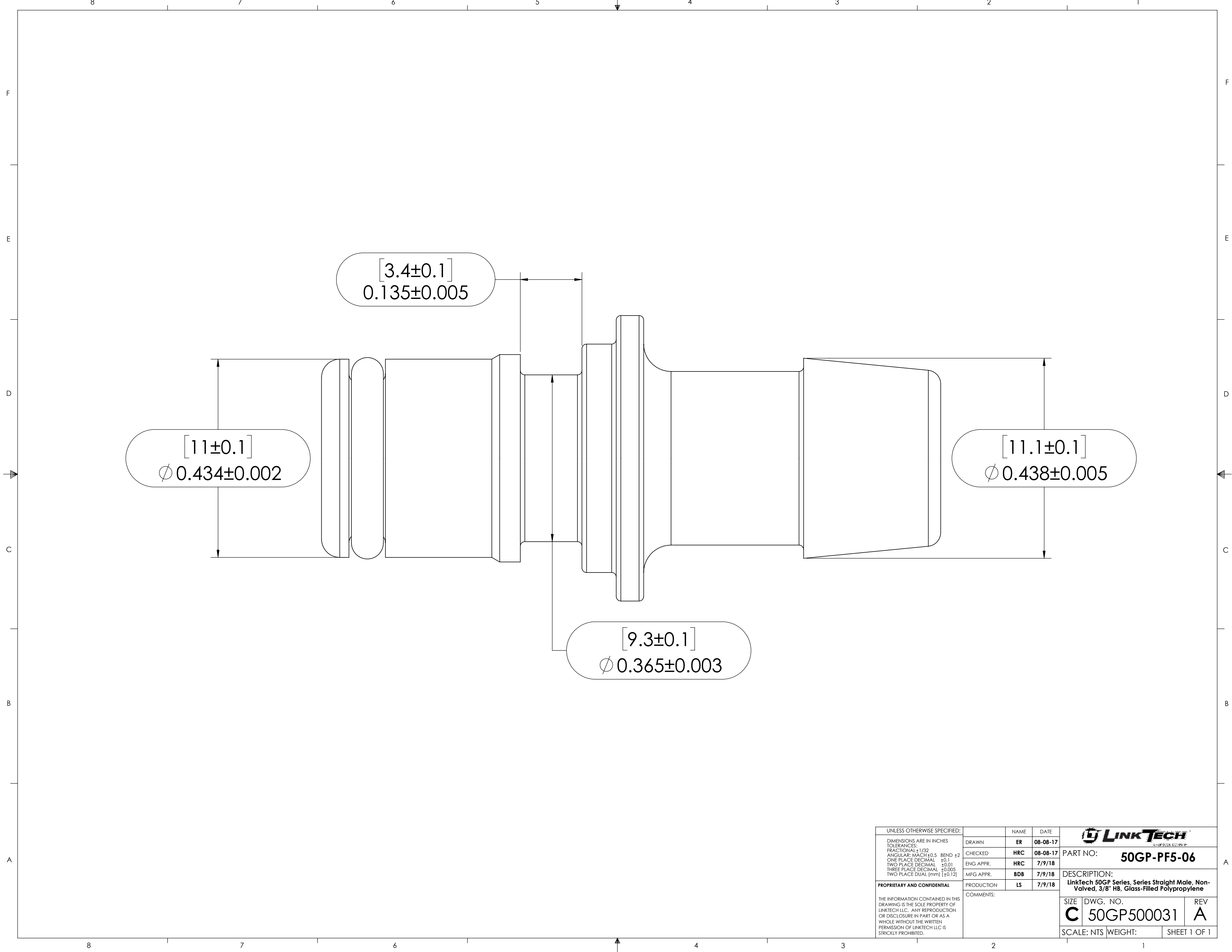
REVISIONS						
SHEET	ZONE	REV.	ECO	DESCRIPTION	DATE	APPROVED
1	ALL	A	50253	UPDATE DWG TO CURRENT FORMAT & STANDARDS	7/9/2018	HRC




NOTES:

- 1. MATERIAL: GLASS-FILLED POLYPROPYLENE
- 2. COLOR: NATURAL WHITE
- 3. O-RING MATERIAL: NSF61 EPDM
- 4. O-RINGS LUBRICATED WITH FOOD GRADE SILICONE OIL, 350 CST.

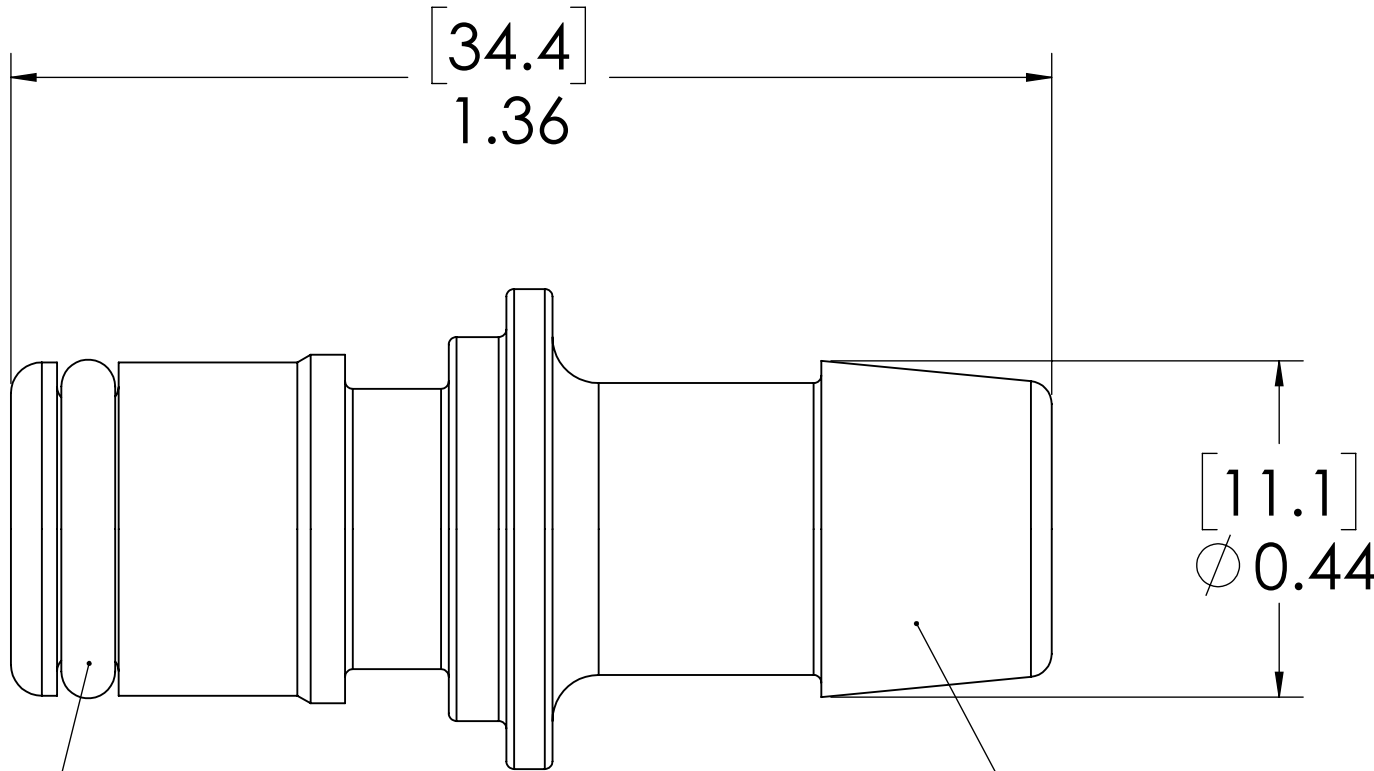
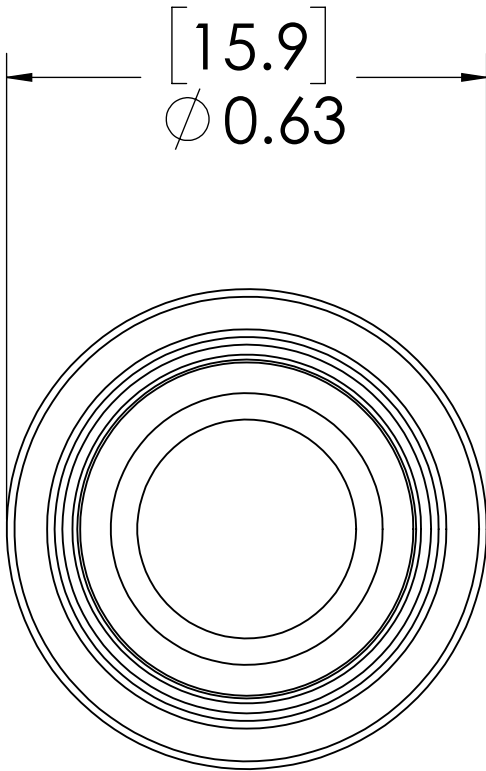
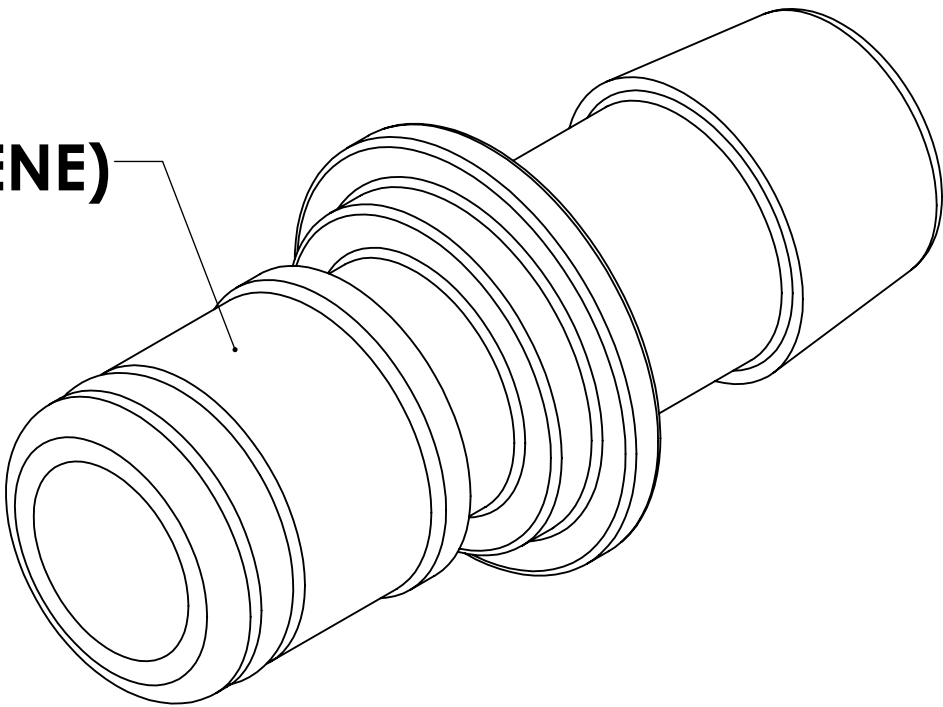
UNLESS OTHERWISE SPECIFIED:						
DIMENSIONS ARE IN INCHES TOLERANCES: FRACTIONAL ± 1/32 ANGULAR, MACH ± 0.5 BEND ± 2 ONE PLACE DECIMAL ± 0.1 TWO PLACE DECIMAL ± 0.01 THREE PLACE DECIMAL ± 0.005 TWO PLACE DUAL (mm) [± 0.12]	DRAWN	ER	07-19-17	PART NO: 50GP-PF5-06		
	CHECKED	HRC	08-08-17			
	ENG APPR.	HRC	7/9/18			
	MFG APPR.	BDB	7/9/18	DESCRIPTION: LinkTech 50GP Series, Series Straight Male, Non-Valved, 3/8" HB, Glass-Filled Polypropylene		
PROPRIETARY AND CONFIDENTIAL	PRODUCTION	LS	7/9/18			
THE INFORMATION CONTAINED IN THIS DRAWING IS THE SOLE PROPERTY OF LINKTECH LLC. ANY REPRODUCTION OR DISCLOSURE IN PART OR AS A WHOLE WITHOUT THE WRITTEN PERMISSION OF LINKTECH LLC IS STRICTLY PROHIBITED.	COMMENTS:			SIZE	DWG. NO.	REV
				C	50GP500031	A
				SCALE: NTS	WEIGHT:	SHEET 1 OF 1



UNLESS OTHERWISE SPECIFIED:		NAME	DATE				
DIMENSIONS ARE IN INCHES TOLERANCES: FRACTIONAL $\pm 1/32$ ANGULAR: MACH ± 0.5 BEND ± 2 ONE PLACE DECIMAL ± 0.1 TWO PLACE DECIMAL ± 0.01 THREE PLACE DECIMAL ± 0.005 TWO PLACE DUAL (mm) $[\pm 0.12]$	DRAWN	ER	08-08-17	PART NO: 50GP-PF5-06			
	CHECKED	HRC	08-08-17				
	ENG APPR.	HRC	7/9/18				
	MFG APPR.	BDB	7/9/18	DESCRIPTION: LinkTech 50GP Series, Series Straight Male, Non-Valved, 3/8" HB, Glass-Filled Polypropylene			
PRODUCTION		LS	7/9/18				
PROPRIETARY AND CONFIDENTIAL		COMMENTS:			SIZE	DWG. NO.	REV
THE INFORMATION CONTAINED IN THIS DRAWING IS THE SOLE PROPERTY OF LINKTECH LLC. ANY REPRODUCTION OR DISCLOSURE IN PART OR AS A WHOLE WITHOUT THE WRITTEN PERMISSION OF LINKTECH LLC IS STRICTLY PROHIBITED.					C	50GP500031	A
		SCALE: NTS		WEIGHT:		SHEET 1 OF 1	

REVISIONS						
SHEET	ZONE	REV.	ECO	DESCRIPTION	DATE	APPROVED
1	ALL	A	50253	UPDATE DWG TO CURRENT FORMAT & STANDARDS	7/9/2018	HRC

PLUG
(GLASS-FILLED POLYPROPYLENE)




O-RING
EXTERNAL
(NSF61 EPDM)

3/8" TUBE ID

- NOTES:**
- 1. MATERIAL: GLASS-FILLED POLYPROPYLENE
 - 2. COLOR: NATURAL WHITE
 - 3. O-RING MATERIAL: NSF61 EPDM
 - 4. O-RINGS LUBRICATED WITH FOOD GRADE SILICONE OIL, 350 CST.

FOR REFERENCE ONLY

UNLESS OTHERWISE SPECIFIED:		NAME	DATE			
DIMENSIONS ARE IN INCHES TOLERANCES: FRACTIONAL ±1/32 ANGULAR: MACH ±0.5 BEND ±2 ONE PLACE DECIMAL ±0.1 TWO PLACE DECIMAL ±0.01 THREE PLACE DECIMAL ±0.005 TWO PLACE DUAL (mm) [±0.12]	DRAWN	ER	08-08-17	PART NO: 50GP-PF5-06		
	CHECKED	HRC	08-08-17			
	ENG APPR.	HRC	7/9/18			
	MFG APPR.	BDB	7/9/18			
PRODUCTION		LS	7/9/18	DESCRIPTION: LinkTech 50GP Series, Series Straight Male, Non-Valved, 3/8" HB, Glass-Filled Polypropylene		
COMMENTS:						
THE INFORMATION CONTAINED IN THIS DRAWING IS THE SOLE PROPERTY OF LINKTECH LLC. ANY REPRODUCTION OR DISCLOSURE IN PART OR AS A WHOLE WITHOUT THE WRITTEN PERMISSION OF LINKTECH LLC IS STRICTLY PROHIBITED.				SIZE	DWG. NO.	REV
				C	50GP500031	A
SCALE: NTS		WEIGHT:		SHEET 1 OF 1		