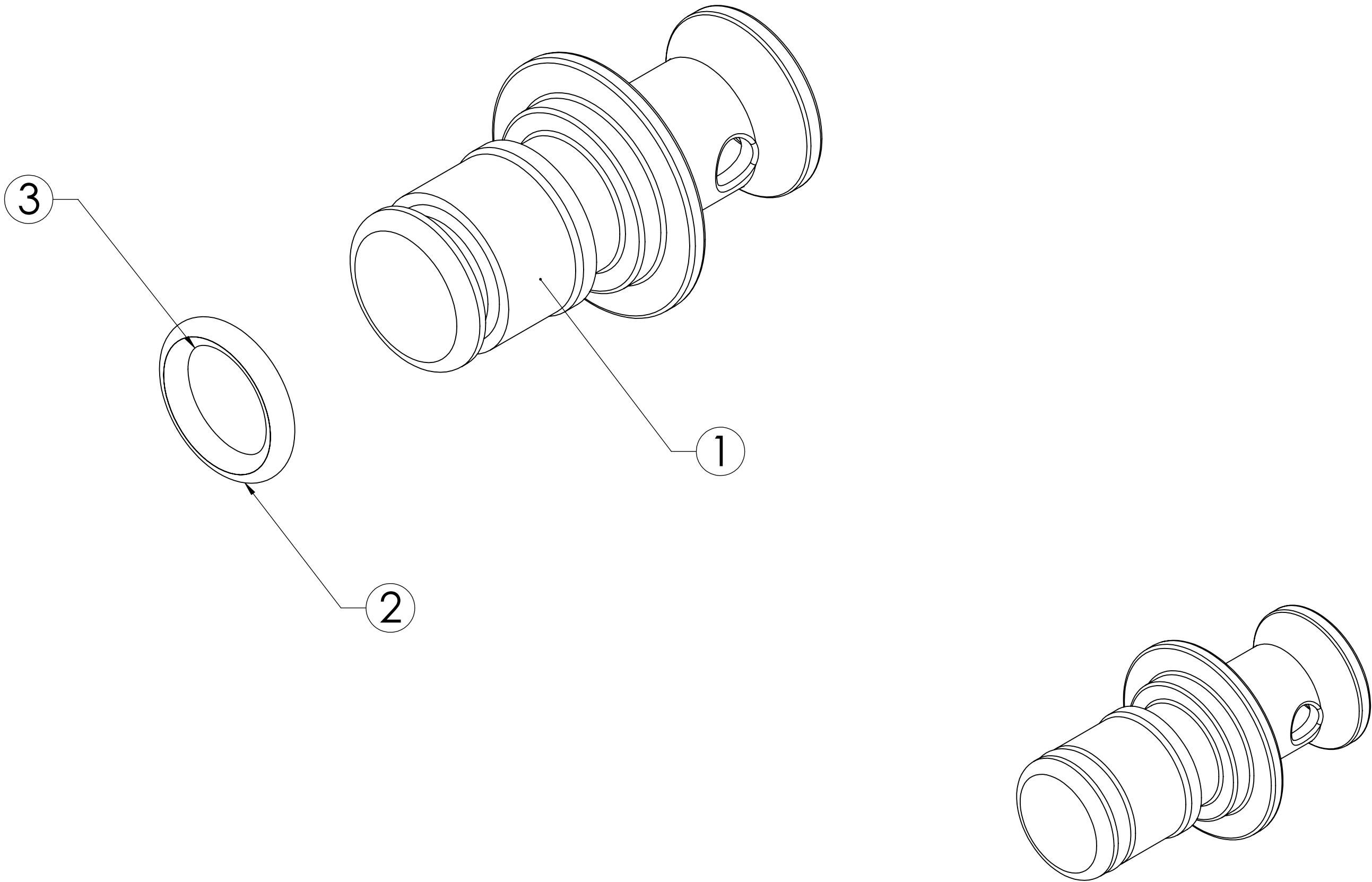



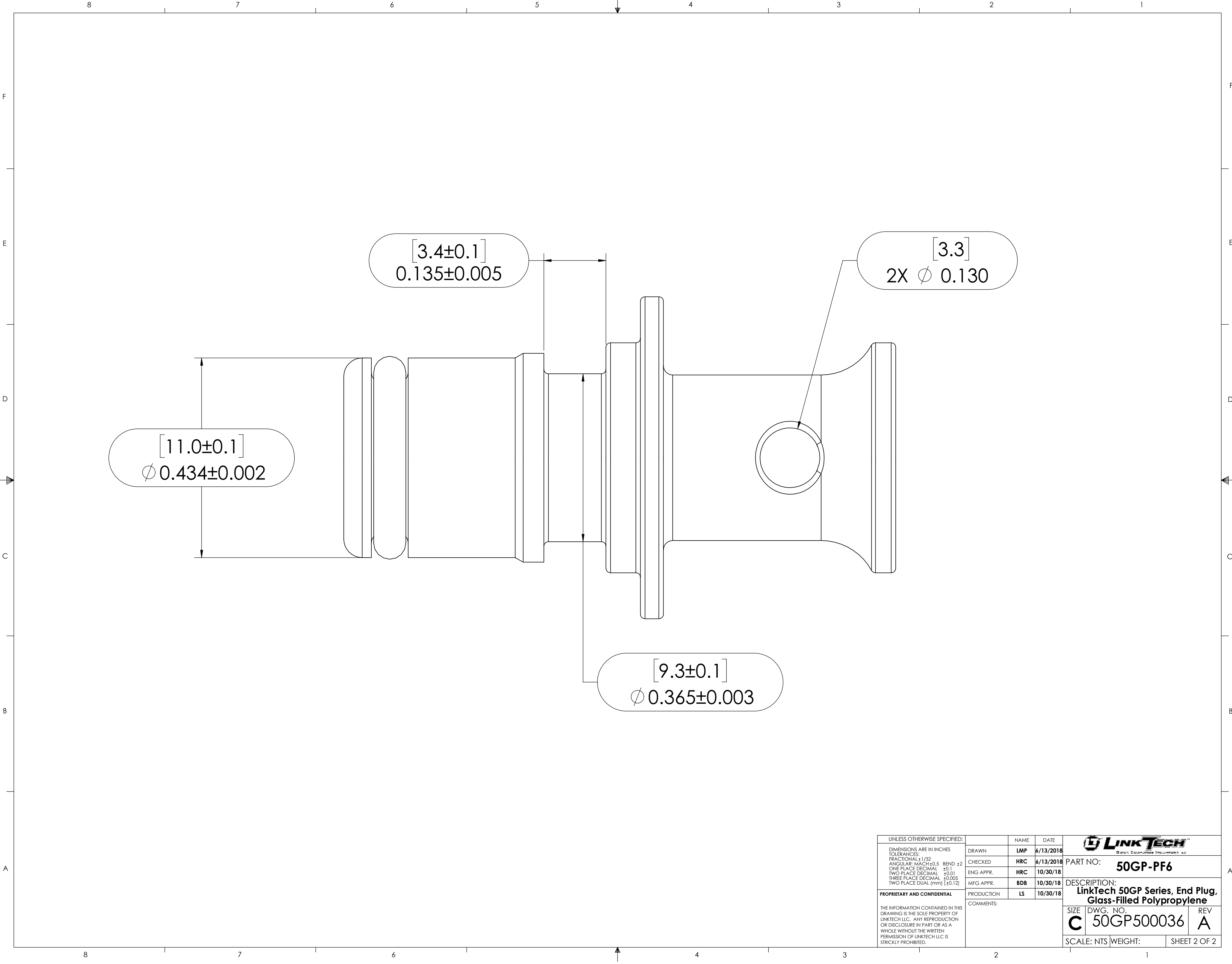
ITEM NO.	PART NUMBER	DESCRIPTION	QTY.
1	C514	END STOP, 50GP	1
2	OE-011-NSF61XL	O-RING, FOOD GRADE EPDM, SIZE -011	1
3	LUBE-DCFG200	O-RING LUBRICATION DOW CORNING FOOD GRADE SILICONE OIL	AR


REVISIONS						
SHEET	ZONE	REV.	ECO	DESCRIPTION	DATE	APPROVED
1	ALL	A	50253	UPDATE DWG TO CURRENT FORMAT & STANDARDS	10/30/2018	HRC

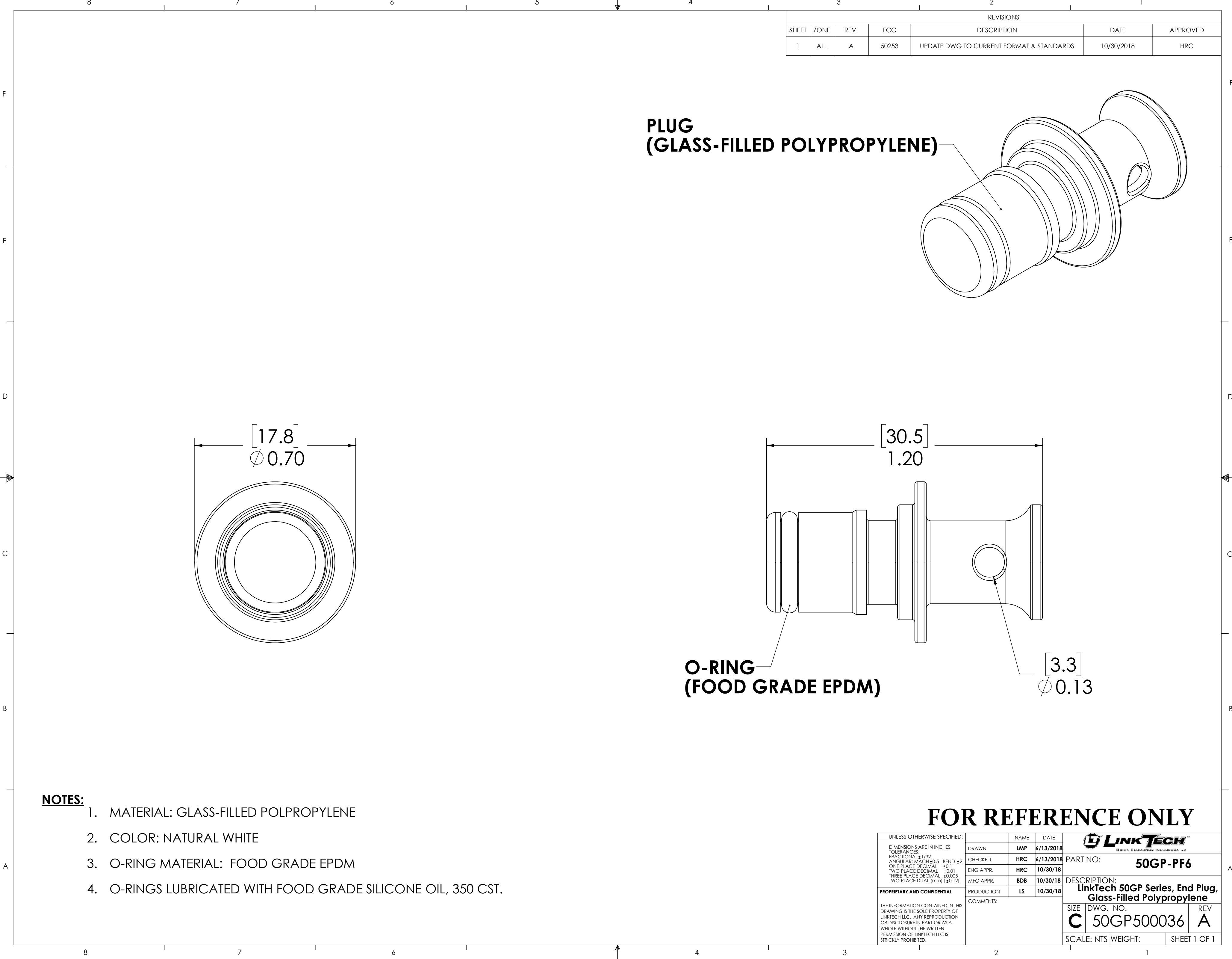


- NOTES:**
- 1. MATERIAL: GLASS-FILLED POLPROPYLENE
 - 2. COLOR: NATURAL WHITE
 - 3. O-RING MATERIAL: FOOD GRADE EPDM
 - 4. O-RINGS LUBRICATED WITH FOOD GRADE SILICONE OIL, 350 CST.

UNLESS OTHERWISE SPECIFIED:		NAME	DATE			
DIMENSIONS ARE IN INCHES TOLERANCES: FRACTIONAL ±1/32 ANGULAR: MACH ±0.5 BEND ±2 ONE PLACE DECIMAL ±0.1 TWO PLACE DECIMAL ±0.01 THREE PLACE DECIMAL ±0.005 TWO PLACE DUAL (mm) [±0.12]	DRAWN	LMP	6/13/2018	PART NO: 50GP-PF6		
	CHECKED	HRC	6/13/2018			
	ENG APPR.	HRC	10/30/18			
	MFG APPR.	BDB	10/30/18			
	PRODUCTION	LS	10/30/18			
PROPRIETARY AND CONFIDENTIAL		COMMENTS:		DESCRIPTION: LinkTech 50GP Series, End Plug, Glass-Filled Polypropylene		
THE INFORMATION CONTAINED IN THIS DRAWING IS THE SOLE PROPERTY OF LINKTECH LLC. ANY REPRODUCTION OR DISCLOSURE IN PART OR AS A WHOLE WITHOUT THE WRITTEN PERMISSION OF LINKTECH LLC IS STRICTLY PROHIBITED.						
				SIZE	DWG. NO.	REV
				C	50GP500036	A
				SCALE: NTS WEIGHT:		SHEET 1 OF 2




UNLESS OTHERWISE SPECIFIED:						
DIMENSIONS ARE IN INCHES TOLERANCES: FRACTIONAL ±1/32 ANGULAR, MACH ±0.5 BEND ±2 ONE PLACE DECIMAL ±0.1 TWO PLACE DECIMAL ±0.01 THREE PLACE DECIMAL ±0.005 TWO PLACE DUAL (mm) [±0.12]	DRAWN	LMP	6/13/2018	PART NO: 50GP-PF6		
	CHECKED	HRC	6/13/2018	DESCRIPTION: LinkTech 50GP Series, End Plug, Glass-Filled Polypropylene		
	ENG APPR.	HRC	10/30/18	SIZE	DWG. NO.	REV
	MFG APPR.	BDB	10/30/18	C	50GP500036	A
PROPRIETARY AND CONFIDENTIAL				SCALE: NTS WEIGHT: SHEET 2 OF 2		
THE INFORMATION CONTAINED IN THIS DRAWING IS THE SOLE PROPERTY OF LINKTECH LLC. ANY REPRODUCTION OR DISCLOSURE IN PART OR AS A WHOLE WITHOUT THE WRITTEN PERMISSION OF LINKTECH LLC IS STRICTLY PROHIBITED.						



REVISIONS						
SHEET	ZONE	REV.	ECO	DESCRIPTION	DATE	APPROVED
1	ALL	A	50253	UPDATE DWG TO CURRENT FORMAT & STANDARDS	10/30/2018	HRC

- NOTES:**
1. MATERIAL: GLASS-FILLED POLPROPYLENE
 2. COLOR: NATURAL WHITE
 3. O-RING MATERIAL: FOOD GRADE EPDM
 4. O-RINGS LUBRICATED WITH FOOD GRADE SILICONE OIL, 350 CST.

FOR REFERENCE ONLY

UNLESS OTHERWISE SPECIFIED:		NAME	DATE			
DIMENSIONS ARE IN INCHES TOLERANCES: FRACTIONAL ±1/32 ANGULAR: MACH ±0.5 BEND ±2 ONE PLACE DECIMAL ±0.1 TWO PLACE DECIMAL ±0.01 THREE PLACE DECIMAL ±0.005 TWO PLACE DUAL (mm) [±0.12]	DRAWN	LMP	6/13/2018	PART NO: 50GP-PF6		
	CHECKED	HRC	6/13/2018			
	ENG APPR.	HRC	10/30/18			
	MFG APPR.	BDB	10/30/18			
	PROPRIETARY AND CONFIDENTIAL	PRODUCTION	LS	10/30/18	DESCRIPTION: LinkTech 50GP Series, End Plug, Glass-Filled Polypropylene	
COMMENTS:						
THE INFORMATION CONTAINED IN THIS DRAWING IS THE SOLE PROPERTY OF LINKTECH LLC. ANY REPRODUCTION OR DISCLOSURE IN PART OR AS A WHOLE WITHOUT THE WRITTEN PERMISSION OF LINKTECH LLC IS STRICTLY PROHIBITED.				SIZE	DWG. NO.	REV
				C	50GP500036	A
				SCALE: NTS WEIGHT:		SHEET 1 OF 1