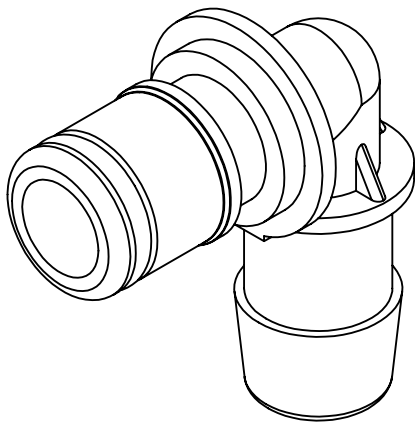
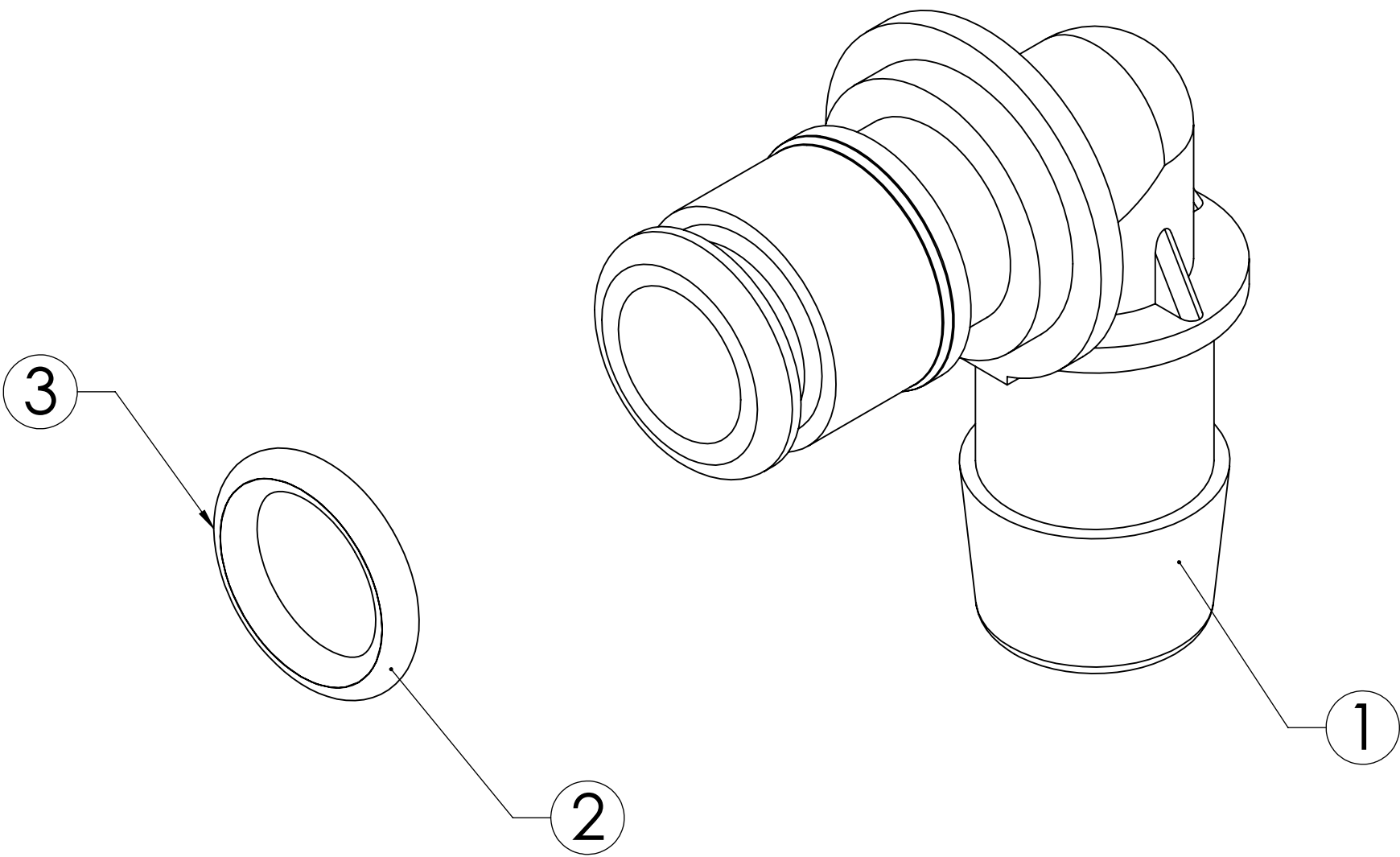



ITEM NO.	PART NUMBER	DESCRIPTION	QTY.
1	C512	PLUG ELBOW, GP, 3/8" HB, 50 SERIES	1
2	OE-011-NSF61	O-RING, FOOD GRADE EPDM, SIZE -011	1
3	LUBE-DCFG200	O-RING LUBRICATION DOW CORNING FOOD GRADE SILICONE OIL	AR

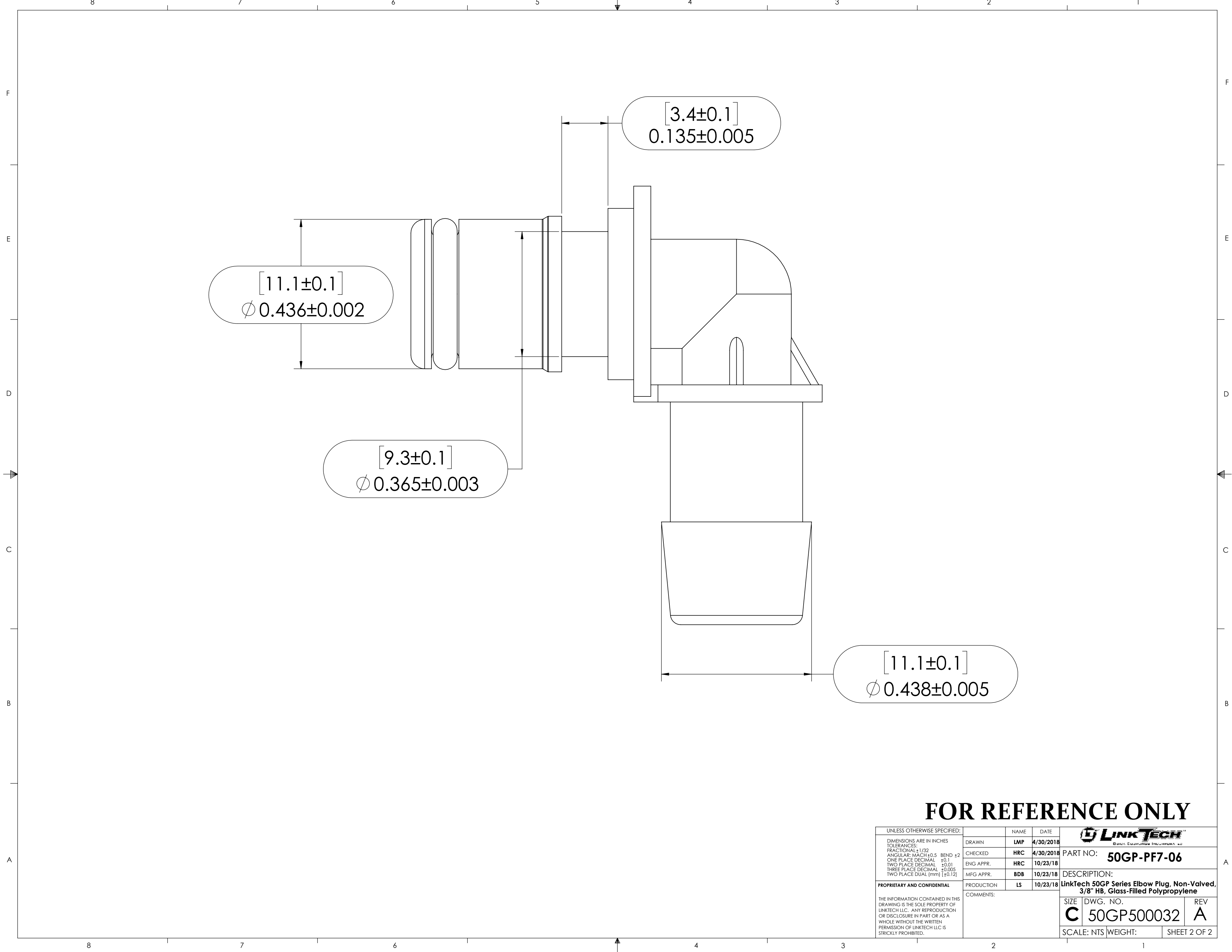
REVISIONS						
SHEET	ZONE	REV.	ECO	DESCRIPTION	DATE	APPROVED
1	ALL	A	50253	UPDATE DWG TO CURRENT FORMAT & STANDARDS	10/23/2018	HRC




NOTES:

- 1. MATERIAL: GLASS-FILLED POLYPROPYLENE
- 2. COLOR: NATURAL WHITE
- 3. O-RING MATERIAL: FOOD GRADE EPDM
- 4. O-RINGS LUBRICATED WITH FOOD GRADE SILICONE OIL, 350 CST.

UNLESS OTHERWISE SPECIFIED:						
DIMENSIONS ARE IN INCHES TOLERANCES: FRACTIONAL ±1/32 ANGULAR, MACH ±0.5 BEND ±2 ONE PLACE DECIMAL ±0.1 TWO PLACE DECIMAL ±0.01 THREE PLACE DECIMAL ±0.005 TWO PLACE DUAL (mm) [±0.12]	DRAWN	LMP	4/30/2018	PART NO: 50GP-PF7-06		
	CHECKED	HRC	4/30/2018			
	ENG APPR.	HRC	10/23/18	DESCRIPTION: LinkTech 50GP Series Elbow Plug, Non-Valved, 3/8" HB, Glass-Filled Polypropylene		
	MFG APPR.	BDB	10/23/18			
PROPRIETARY AND CONFIDENTIAL THE INFORMATION CONTAINED IN THIS DRAWING IS THE SOLE PROPERTY OF LINKTECH LLC. ANY REPRODUCTION OR DISCLOSURE IN PART OR AS A WHOLE WITHOUT THE WRITTEN PERMISSION OF LINKTECH LLC IS STRICTLY PROHIBITED.	PRODUCTION	LS	10/23/18	SIZE DWG. NO. REV		
	COMMENTS:			C 50GP500032 A		
	SCALE: NTS		WEIGHT:	SHEET 1 OF 2		

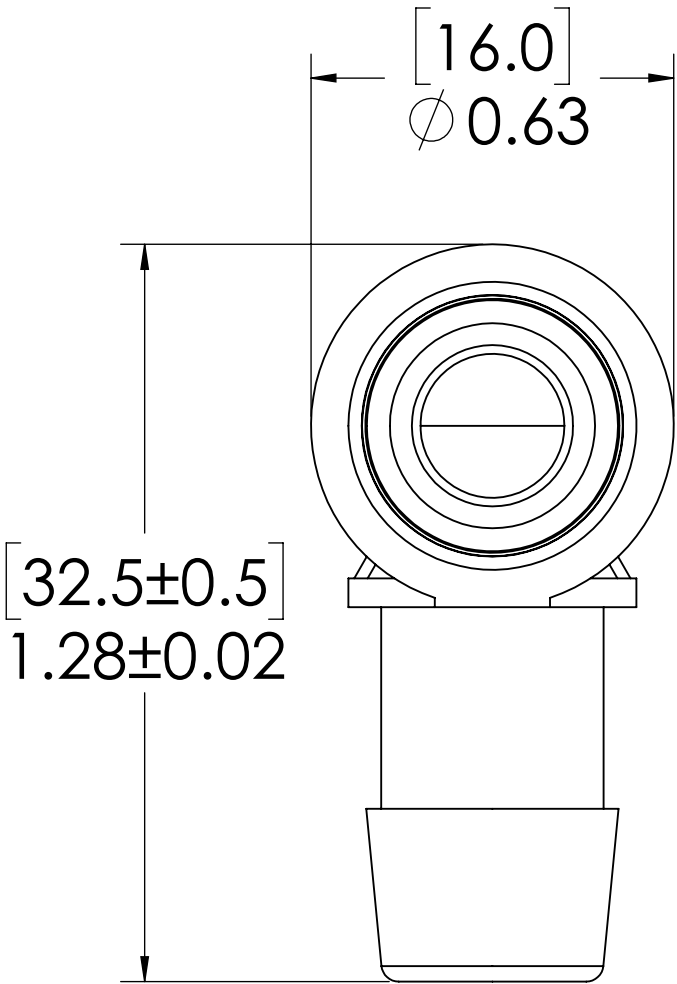
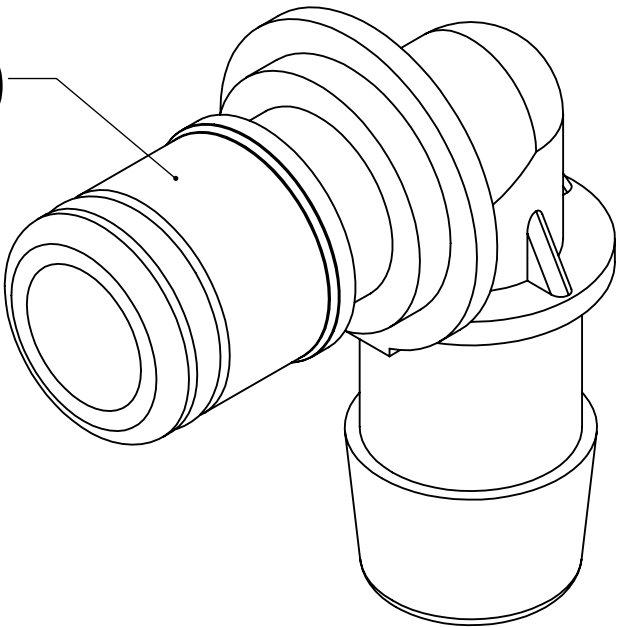


FOR REFERENCE ONLY

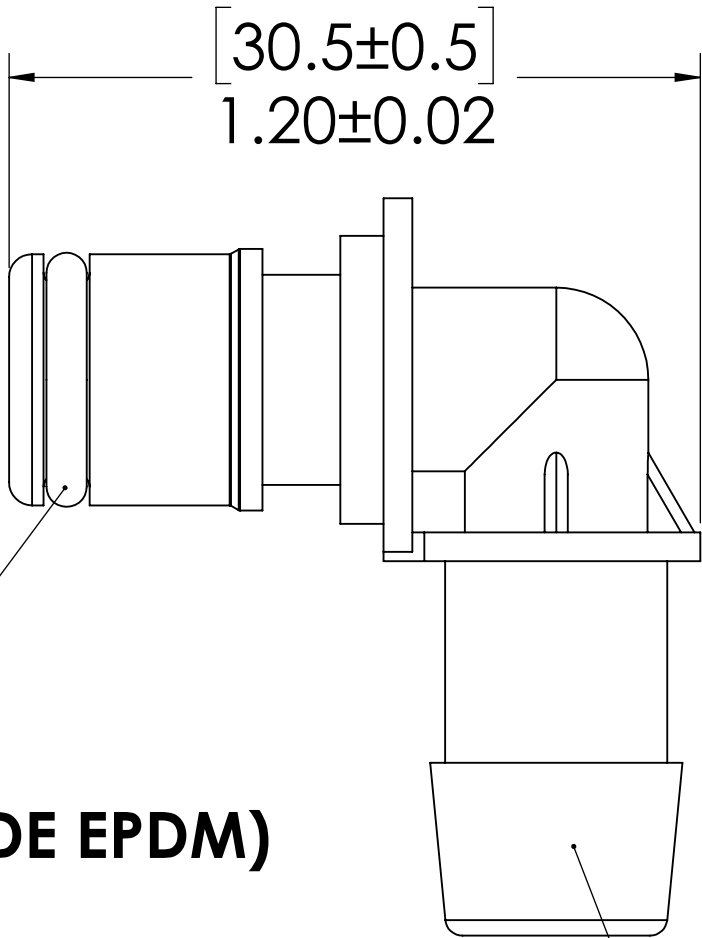
UNLESS OTHERWISE SPECIFIED:		NAME	DATE	 LINKTECH™ <small>GLASS FILLED POLYPROPYLENE</small>		
DIMENSIONS ARE IN INCHES TOLERANCES: FRACTIONAL ±1/32 ANGULAR: MACH ±0.5 BEND ±2 ONE PLACE DECIMAL ±0.1 TWO PLACE DECIMAL ±0.01 THREE PLACE DECIMAL ±0.005 TWO PLACE DUAL (mm) [±0.12]	DRAWN	LMP	4/30/2018	PART NO:	50GP-PF7-06	
	CHECKED	HRC	4/30/2018			
	ENG APPR.	HRC	10/23/18			
	MFG APPR.	BDB	10/23/18	DESCRIPTION:	LinkTech 50GP Series Elbow Plug, Non-Valved, 3/8" HB, Glass-Filled Polypropylene	
	PRODUCTION	LS	10/23/18			
PROPRIETARY AND CONFIDENTIAL		COMMENTS:		SIZE	DWG. NO.	REV
THE INFORMATION CONTAINED IN THIS DRAWING IS THE SOLE PROPERTY OF LINKTECH LLC. ANY REPRODUCTION OR DISCLOSURE IN PART OR AS A WHOLE WITHOUT THE WRITTEN PERMISSION OF LINKTECH LLC IS STRICTLY PROHIBITED.				C	50GP500032	A
				SCALE: NTS	WEIGHT:	SHEET 2 OF 2

REVISIONS						
SHEET	ZONE	REV.	ECO	DESCRIPTION	DATE	APPROVED
1	ALL	A	50253	UPDATE DWG TO CURRENT FORMAT & STANDARDS	10/23/2018	HRC

PLUG
(GLASS-FILLED
POLYPROPYLENE)



O-RING
EXTERNAL
(FOOD GRADE EPDM)




3/8" TUBE ID

NOTES:

1. MATERIAL: GLASS-FILLED POLYPROPYLENE
2. COLOR: NATURAL WHITE
3. O-RING MATERIAL: FOOD GRADE EPDM
4. O-RINGS LUBRICATED WITH FOOD GRADE SILICONE OIL, 350 CST.

FOR REFERENCE ONLY

UNLESS OTHERWISE SPECIFIED:		NAME	DATE				
DIMENSIONS ARE IN INCHES TOLERANCES: FRACTIONAL ±1/32 ANGULAR: MACH ±0.5 BEND ±2 ONE PLACE DECIMAL ±0.1 TWO PLACE DECIMAL ±0.01 THREE PLACE DECIMAL ±0.005 TWO PLACE DUAL (mm) [±0.12]	DRAWN	LMP	4/30/2018	PART NO: 50GP-PF7-06			
	CHECKED	HRC	4/30/2018				
	ENG APPR.	HRC	10/23/18	DESCRIPTION: LinkTech 50GP Series Elbow Plug, Non-Valved, 3/8" HB, Glass-Filled Polypropylene			
	MFG APPR.	BDB	10/23/18				
	PROPRIETARY AND CONFIDENTIAL	PRODUCTION	LS	10/23/18	SIZE DWG. NO. REV C 50GP500032 A		
COMMENTS:							
THE INFORMATION CONTAINED IN THIS DRAWING IS THE SOLE PROPERTY OF LINKTECH LLC. ANY REPRODUCTION OR DISCLOSURE IN PART OR AS A WHOLE WITHOUT THE WRITTEN PERMISSION OF LINKTECH LLC IS STRICTLY PROHIBITED.				SCALE: NTS		WEIGHT:	SHEET 1 OF 1