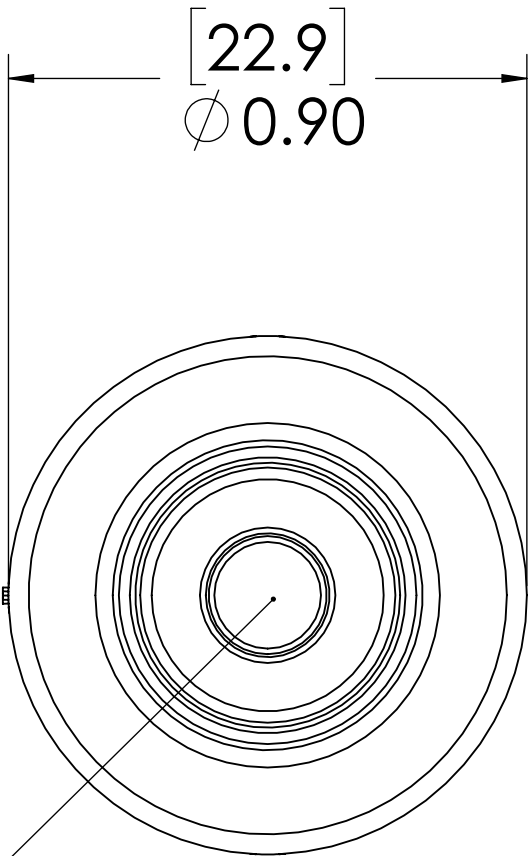
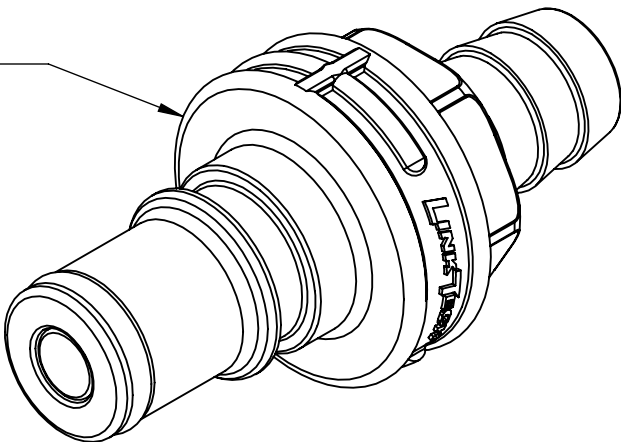
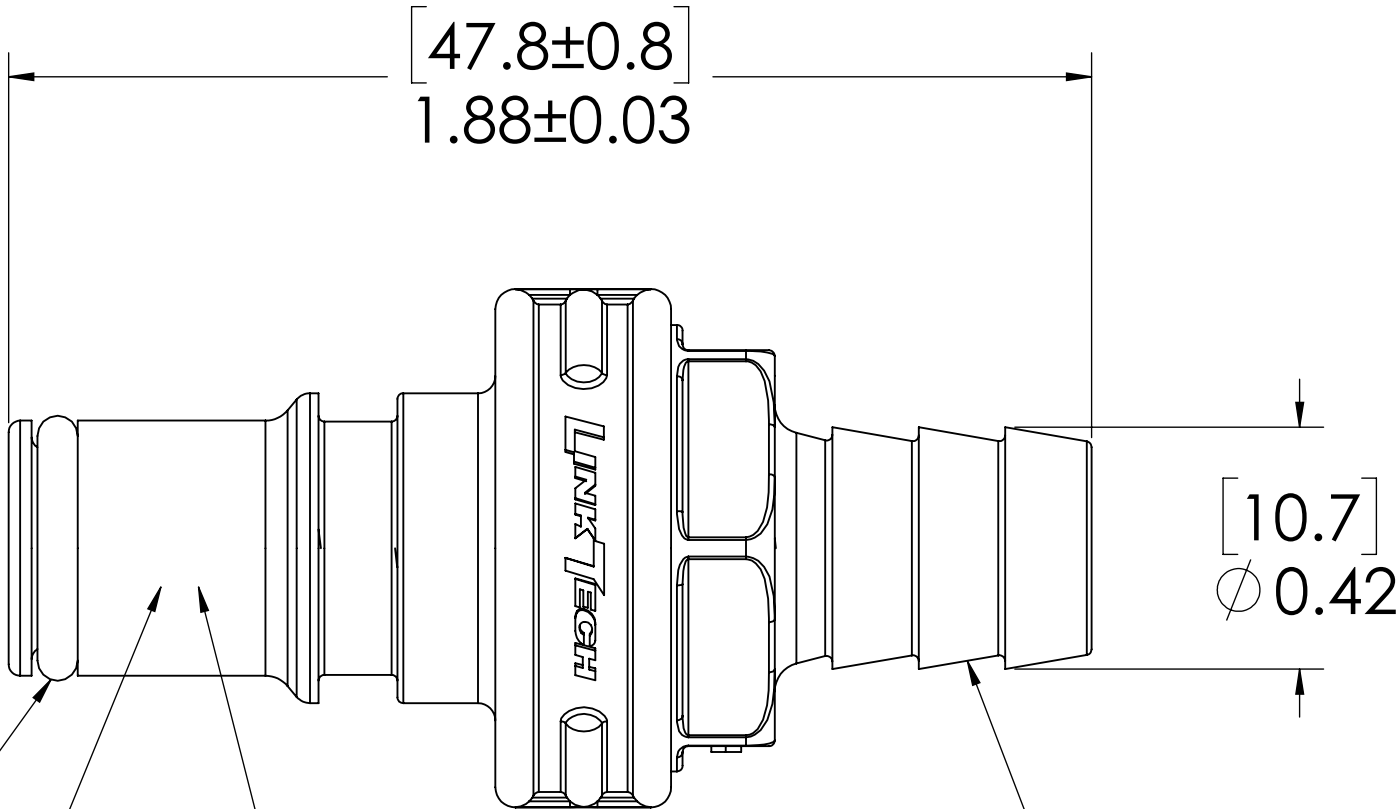


REVISIONS						
SHEET	ZONE	REV.	ECO	DESCRIPTION	DATE	APPROVED
1	ALL	A	50240	INITIAL RELEASE	6/9/2017	HRC
1	ALL	B	50253	UPDATE DWG TO CURRENT FORMAT & STANDARDS	10/23/2018	HRC

PLUG,
(GLASS-FILLED
POLYPROPYLENE)



VALVE,
(GLASS-FILLED
POLYPROPYLENE)



O-RING,
(EPDM)


VALVE O-RING,
INTERNAL
(EPDM)

VALVE SPRING,
INTERNAL
(STAINLESS STEEL)

3/8" TUBE ID

- NOTES:**
- MATERIAL: GLASS FILLED POLYPROPYLENE
 - COLOR: GREY
 - O-RING MATERIAL: EPDM
 - O-RINGS LUBRICATED WITH FOOD GRADE SILICONE OIL, 350 CST.

FOR REFERENCE ONLY

UNLESS OTHERWISE SPECIFIED:						
DIMENSIONS ARE IN INCHES TOLERANCES: FRACTIONAL ± 1/32 ANGULAR, MACH ± 0.5 ONE PLACE DECIMAL ± 0.1 TWO PLACE DECIMAL ± 0.01 THREE PLACE DECIMAL ± 0.005 TWO PLACE DUAL (mm) [± 0.12]	DRAWN	CKE	7/14/16	PART NO: 55GPV-PE2-06		
	CHECKED	HRC	7/14/16	DESCRIPTION:		
	ENG APPR.	HRC	6/9/17	LinkTech 55GP Series Straight Male, Valved, 375 HB, Glass Filled Polypropylene		
	MFG APPR.	BDB	6/9/17	SIZE DWG. NO. REV		
PROPRIETARY AND CONFIDENTIAL				Q.A.	JJB	6/9/17
THE INFORMATION CONTAINED IN THIS DRAWING IS THE SOLE PROPERTY OF LINKTECH LLC. ANY REPRODUCTION OR DISCLOSURE IN PART OR AS A WHOLE WITHOUT THE WRITTEN PERMISSION OF LINKTECH LLC IS STRICTLY PROHIBITED.				COMMENTS:		
				SCALE: NTS WEIGHT: SHEET 1 OF 1		