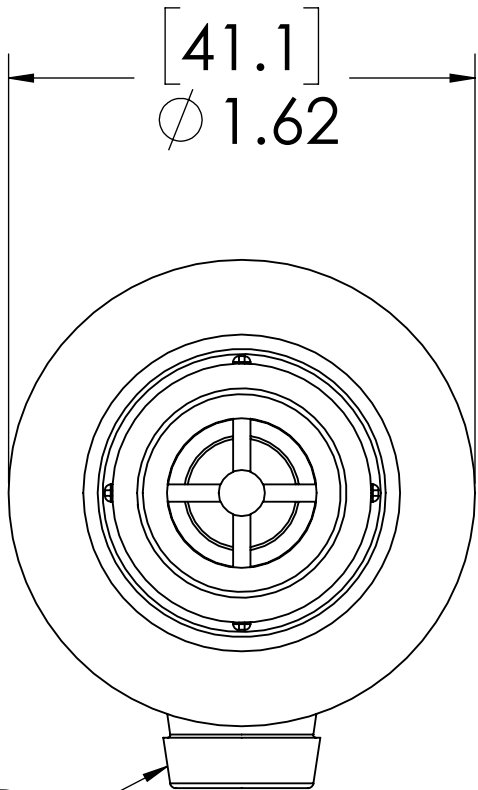
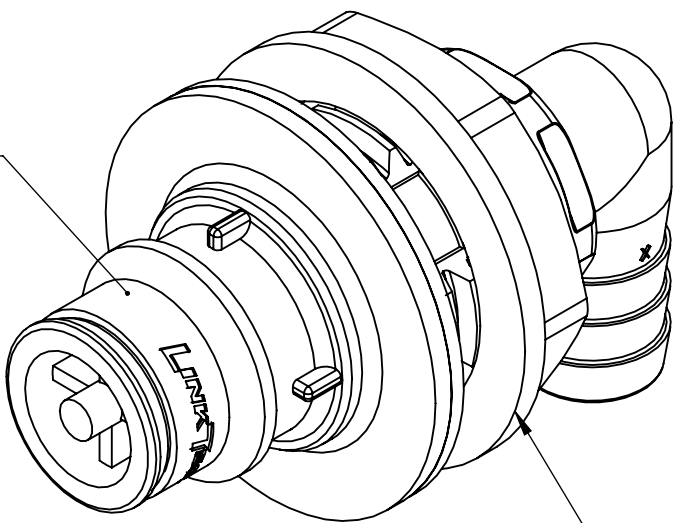


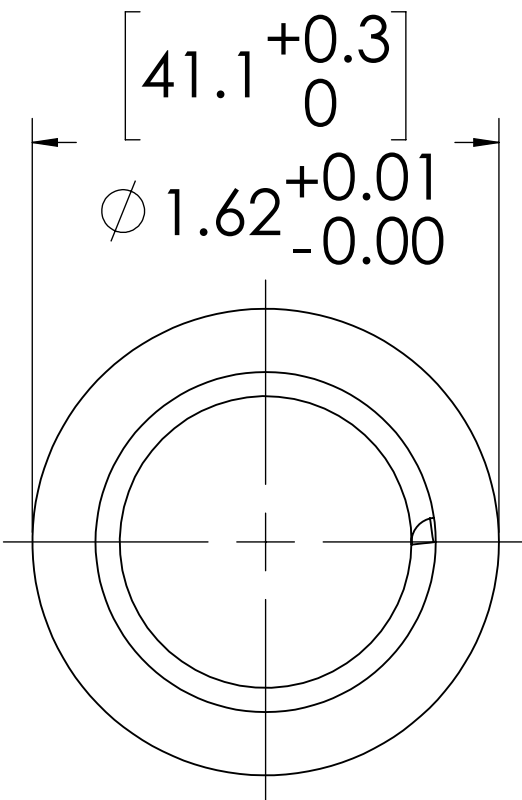
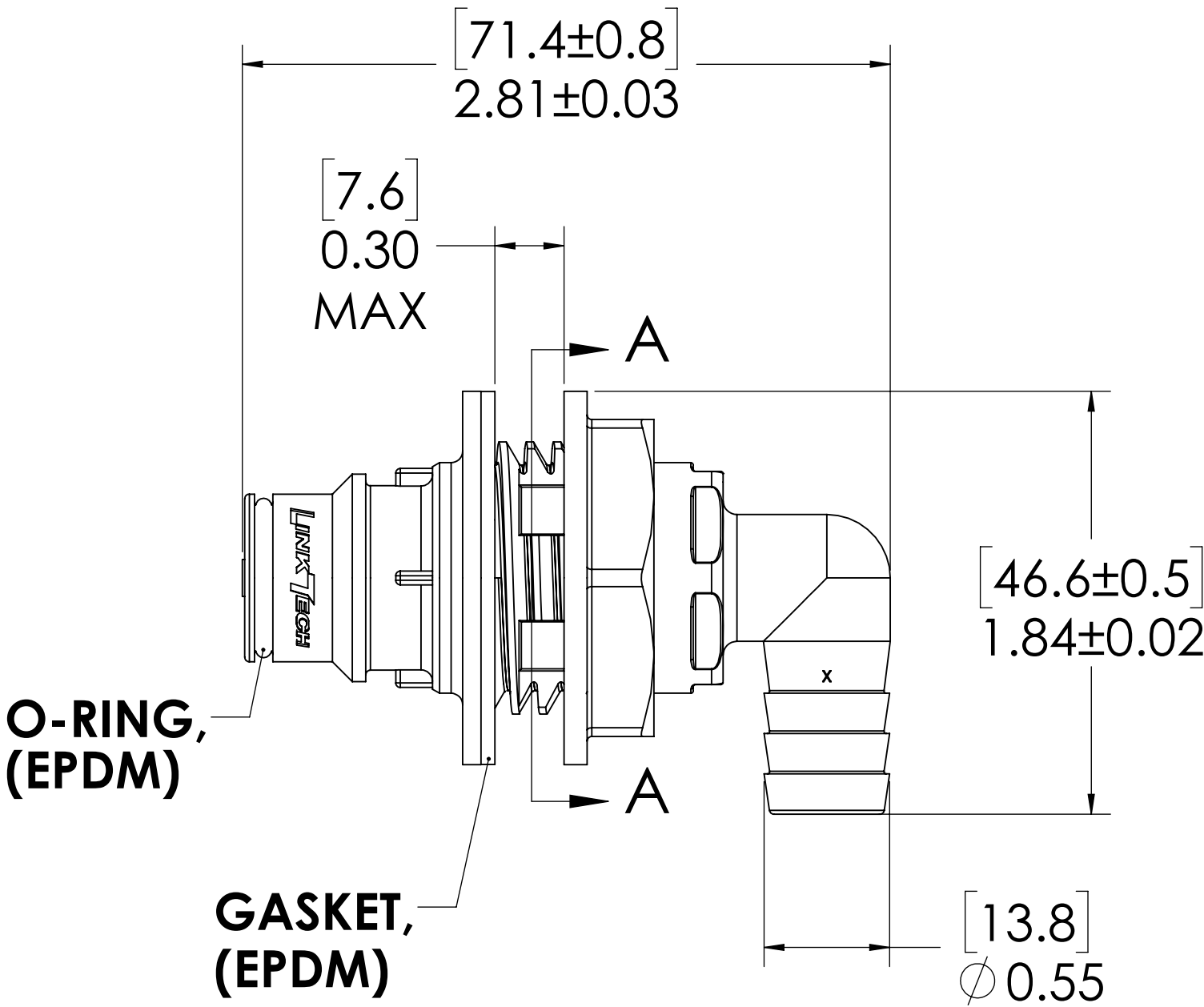
REVISIONS						
SHEET	ZONE	REV.	ECO	DESCRIPTION	DATE	APPROVED
1	ALL	NC	50093	INITIAL RELEASE	9/10/14	HRC
1	ALL	A	50257	O-RING AND DWG FORMAT UPDATE	10/10/2018	HRC

PLUG
(POLYPROPYLENE)

PANEL NUT
(POLYPROPYLENE)




3/8" TUBE ID



PANEL OPENING
(SECTION A-A)

- NOTES:**
- MATERIAL: POLYPROPYLENE
 - COLOR: GREY
 - O-RING AND GASKET MATERIAL: EPDM
 - O-RINGS LUBRICATED WITH FOOD GRADE SILICONE OIL, 350 CST.

FOR REFERENCE ONLY

UNLESS OTHERWISE SPECIFIED:		NAME	DATE		
DIMENSIONS ARE IN INCHES TOLERANCES: FRACTIONAL ±1/32 ANGULAR: MACH ±0.5 BEND ±2 ONE PLACE DECIMAL ±0.1 TWO PLACE DECIMAL ±0.01 THREE PLACE DECIMAL ±0.005 TWO PLACE DECIMAL (mm) ±0.12	DRAWN	HRC	6/23/14	PART NO: 60PP-PE22-06	
	CHECKED	HRC	6/23/14		
	ENG APPR.	HRC	10/10/18	DESCRIPTION: LinkTech 60PP Series Panel Mt. Male, Non-valved 3/8" HB Elbow, Polypropylene	
	MFG APPR.	BDB	10/10/18		
	PRODUCTION	LS	10/10/18		
PROPRIETARY AND CONFIDENTIAL	COMMENTS:		SIZE DWG. NO. REV		
THE INFORMATION CONTAINED IN THIS DRAWING IS THE SOLE PROPERTY OF LINKTECH LLC. ANY REPRODUCTION OR DISCLOSURE IN PART OR AS A WHOLE WITHOUT THE WRITTEN PERMISSION OF LINKTECH LLC IS STRICTLY PROHIBITED.			C 60PP600081		A
			SCALE: NTS	WEIGHT:	SHEET 1 OF 1