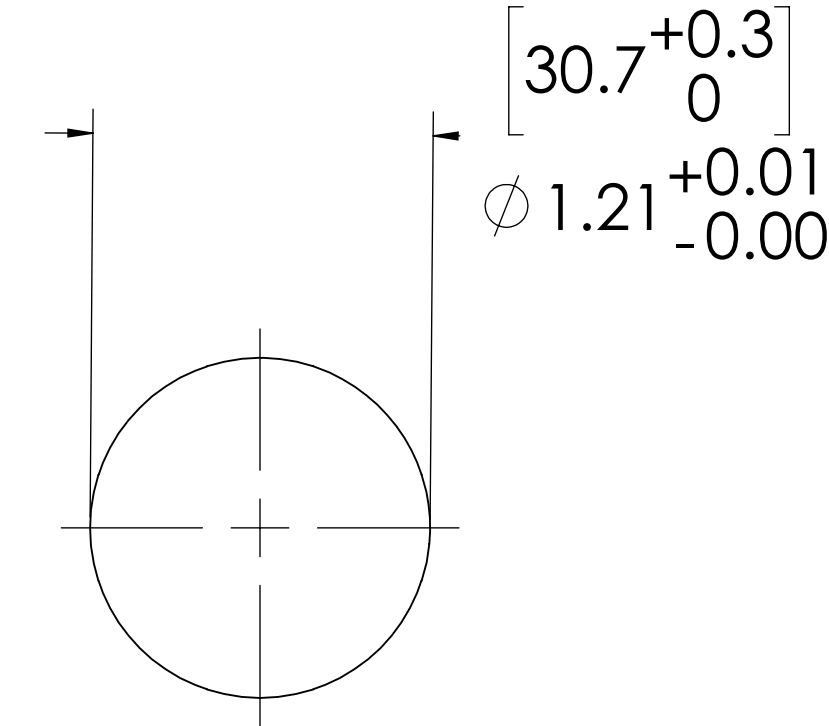
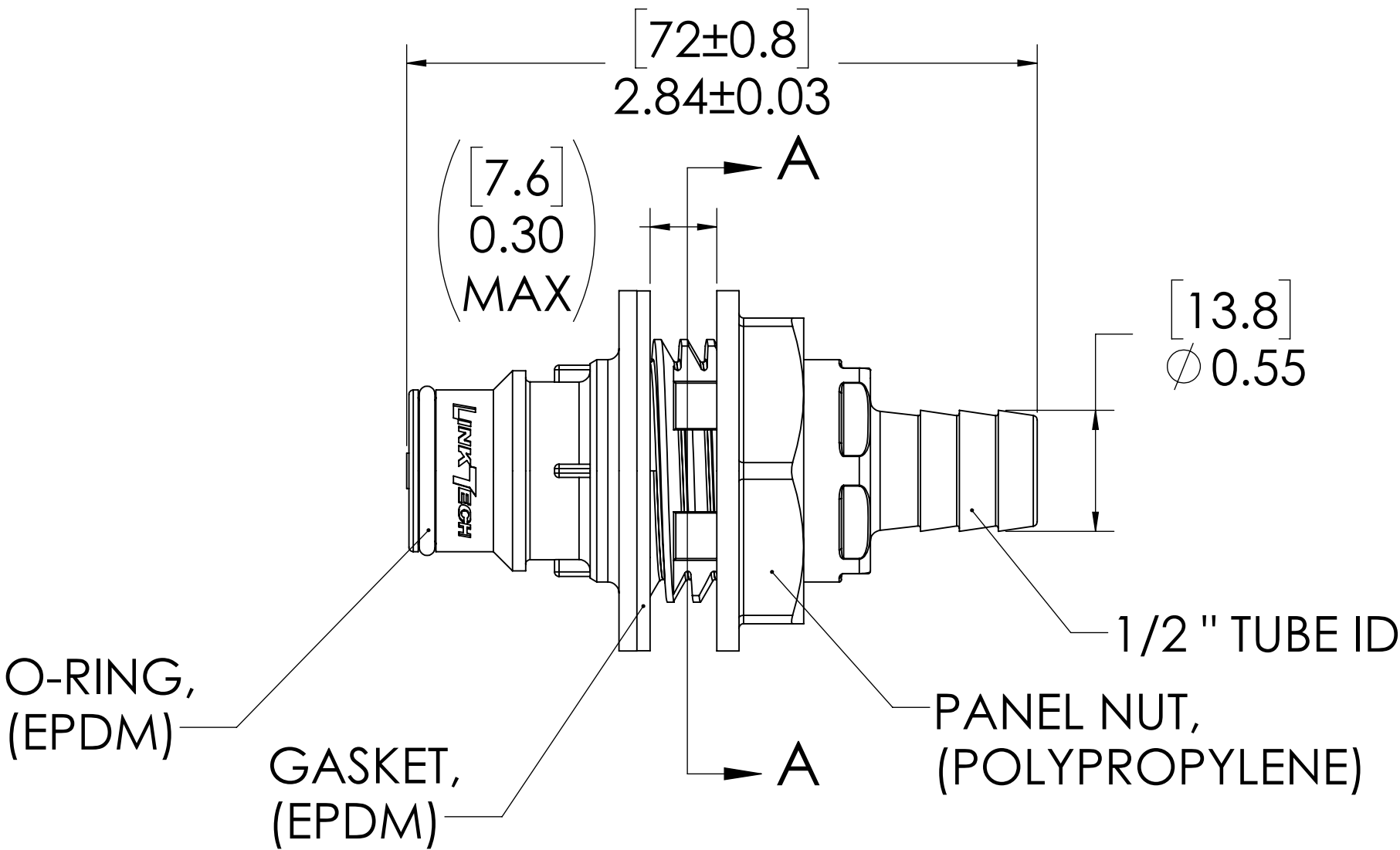
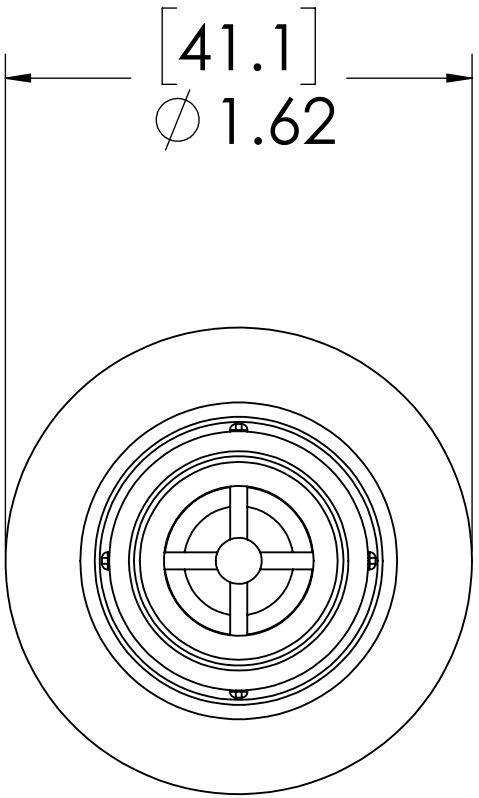
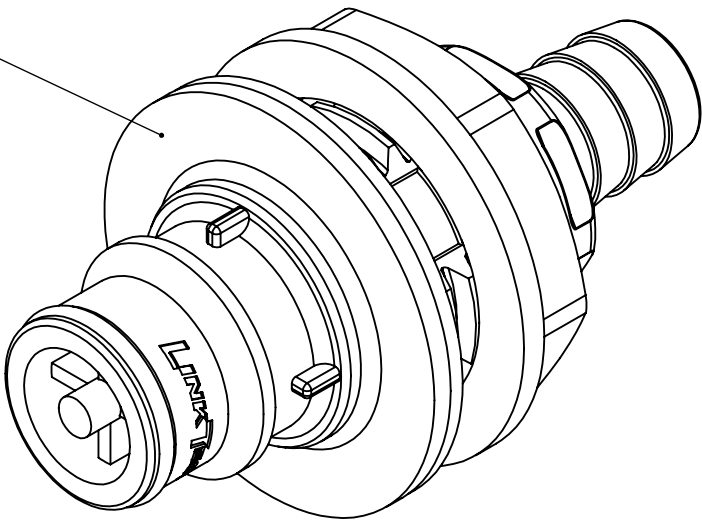


REVISIONS						
SHEET	ZONE	REV.	ECO	DESCRIPTION	DATE	APPROVED
1	ALL	A	50093	INITIAL RELEASE	9/13/2013	HRC
1	ALL	B	50257	O-RING AND DWG FORMAT UPDATE	06/12/2018	HRC


PLUG,
(POLYPROPYLENE)



PANEL OPENING
(SECTION A-A)

- NOTES:**
- MATERIAL: POLYPROPYLENE
 - COLOR: GREY
 - O-RING MATERIAL: EPDM
 - O-RINGS LUBRICATED WITH FOOD GRADE SILICONE OIL, 350 CST.

FOR REFERENCE ONLY

UNLESS OTHERWISE SPECIFIED:		NAME	DATE				
DIMENSIONS ARE IN INCHES TOLERANCES: FRACTIONAL ±1/32 ANGULAR: MACH ±0.5 BEND ±2 ONE PLACE DECIMAL ±0.1 TWO PLACE DECIMAL ±0.01 THREE PLACE DECIMAL ±0.005 TWO PLACE DUAL (mm) [±0.12]	DRAWN	HRC	9/13/13	PART NO: 60PP-PE3-08			
	CHECKED	CKE	6/12/18				
		ENG APPR.	HRC	6/12/18	DESCRIPTION: LinkTech 60PP Series Panel Mt. Male, Non valved 1/2" HB, Polypropylene		
		MFG APPR.	BDB	6/12/18			
PROPRIETARY AND CONFIDENTIAL		PRODUCTION	LAS	6/12/18	SIZE DWG. NO. REV C 60PP600046 B		
THE INFORMATION CONTAINED IN THIS DRAWING IS THE SOLE PROPERTY OF LINKTECH LLC. ANY REPRODUCTION OR DISCLOSURE IN PART OR AS A WHOLE WITHOUT THE WRITTEN PERMISSION OF LINKTECH LLC IS STRICTLY PROHIBITED.		COMMENTS:					
		SCALE: NTS		WEIGHT:		SHEET 1 OF 1	