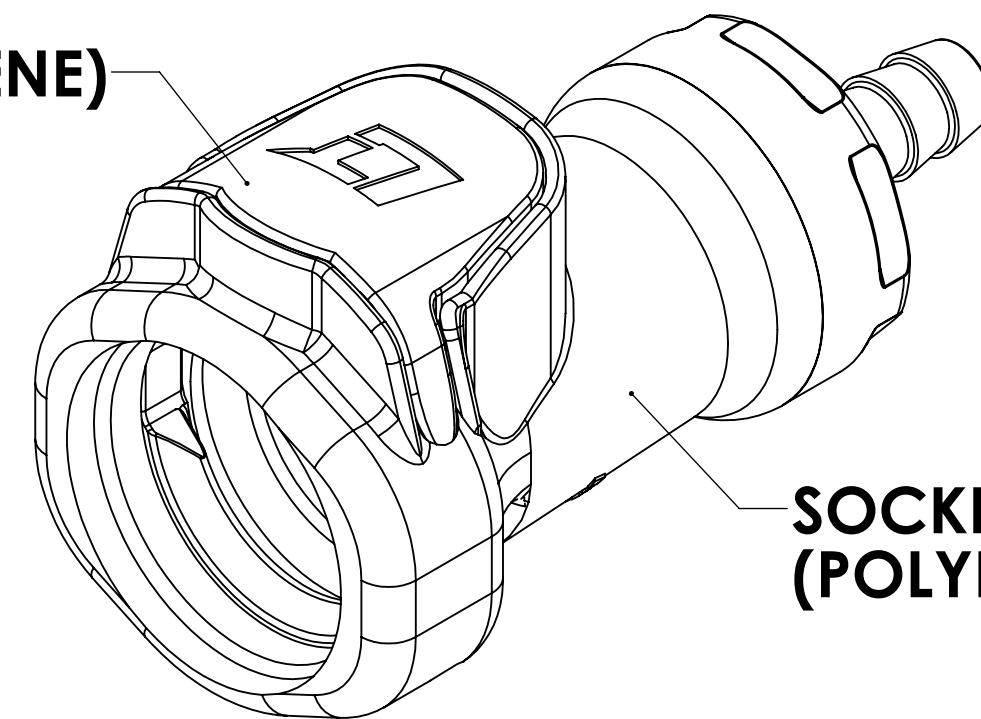
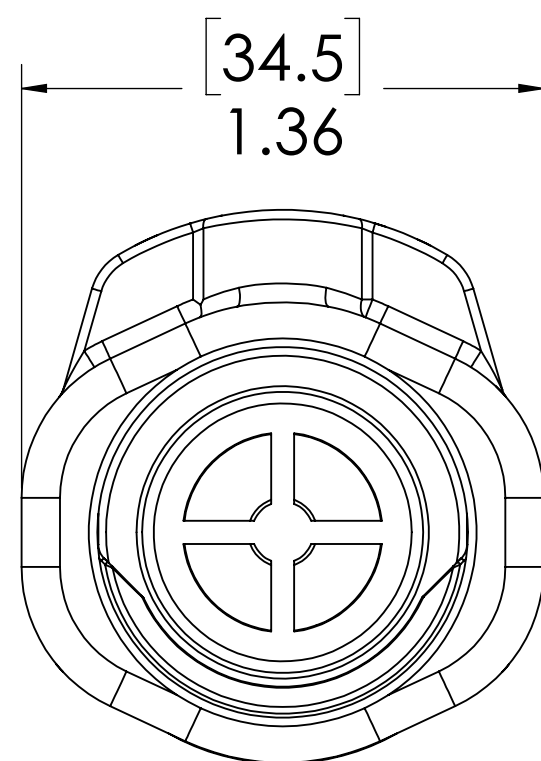


REVISIONS						
SHEET	ZONE	REV.	ECO	DESCRIPTION	DATE	APPROVED
1	ALL	A	50253	UPDATE DWG TO CURRENT FORMAT & STANDARDS	10/18/2018	HRC

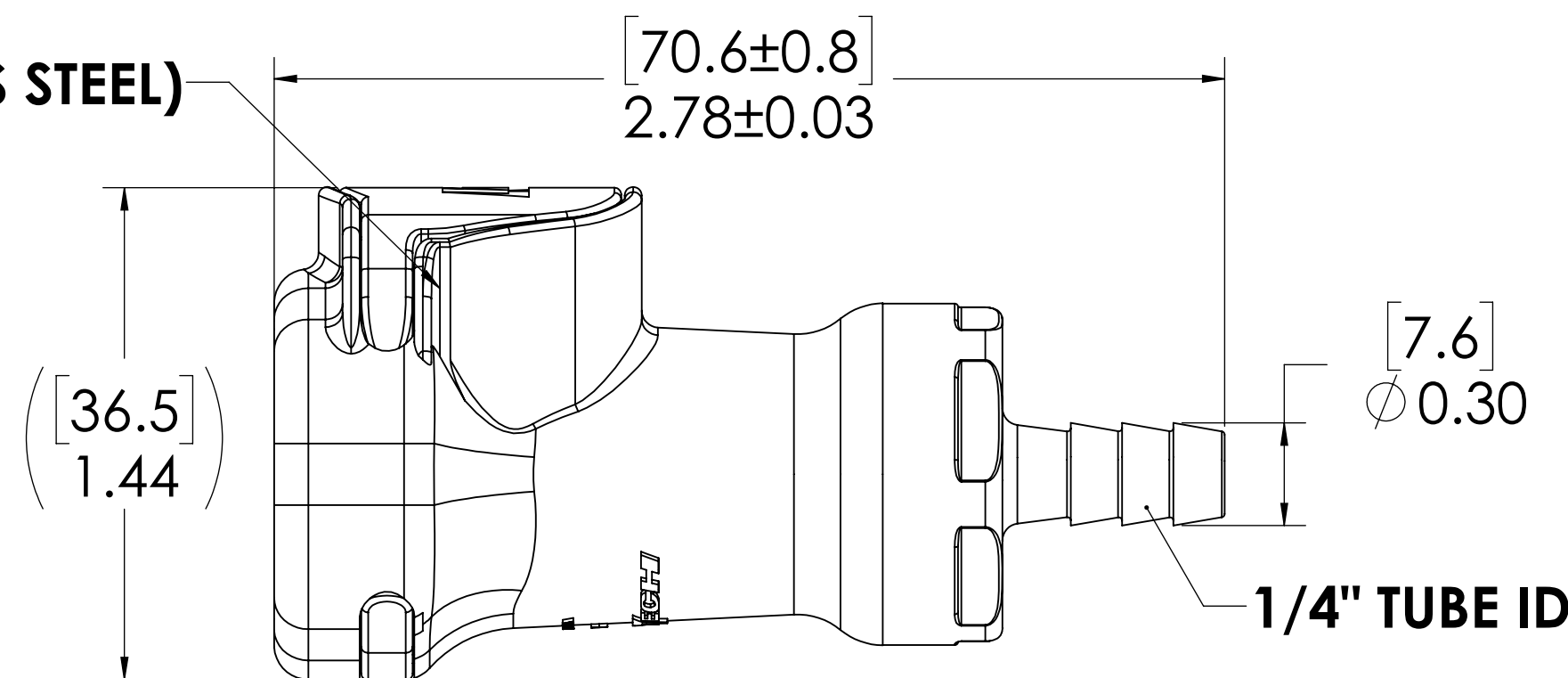
**LATCH  
(POLYPROPYLENE)**



**SOCKET  
(POLYPROPYLENE)**




**LATCH SPRING  
INTERNAL  
(STAINLESS STEEL)**



**NOTES:**

1. MATERIAL: POLYPROPYLENE
2. COLOR: GREY

**FOR REFERENCE ONLY**

<small>UNLESS OTHERWISE SPECIFIED: DIMENSIONS ARE IN INCHES TOLERANCES: FRACTIONAL ±1/32 ANGULAR: MACH ±0.5 BEND ±2 ONE PLACE DECIMAL ±0.1 TWO PLACE DECIMAL ±0.01 THREE PLACE DECIMAL ±0.005 TWO PLACE DUAL (mm) [±0.12]</small>	DRAWN	LMP	6/19/2018	 <b>PART NO: 60PP-S2-04</b> <b>DESCRIPTION: LinkTech 60PP Series, Inline Socket, Non-Valved, 1/4" HB, Polypropylene</b>
	CHECKED	HRC	6/19/2018	
	ENG APPR.	HRC	10/18/18	
	MFG APPR.	BDB	10/18/18	
PRODUCTION	LS	10/18/18		
<small>PROPRIETARY AND CONFIDENTIAL THE INFORMATION CONTAINED IN THIS DRAWING IS THE SOLE PROPERTY OF LINKTECH LLC. ANY REPRODUCTION OR DISCLOSURE IN PART OR AS A WHOLE WITHOUT THE WRITTEN PERMISSION OF LINKTECH LLC IS STRICTLY PROHIBITED.</small>				<small>COMMENTS:</small>
<small>SIZE DWG. NO. REV</small> <b>C 60PP600163 A</b>		<small>SCALE: NTS WEIGHT: SHEET 1 OF 1</small>		