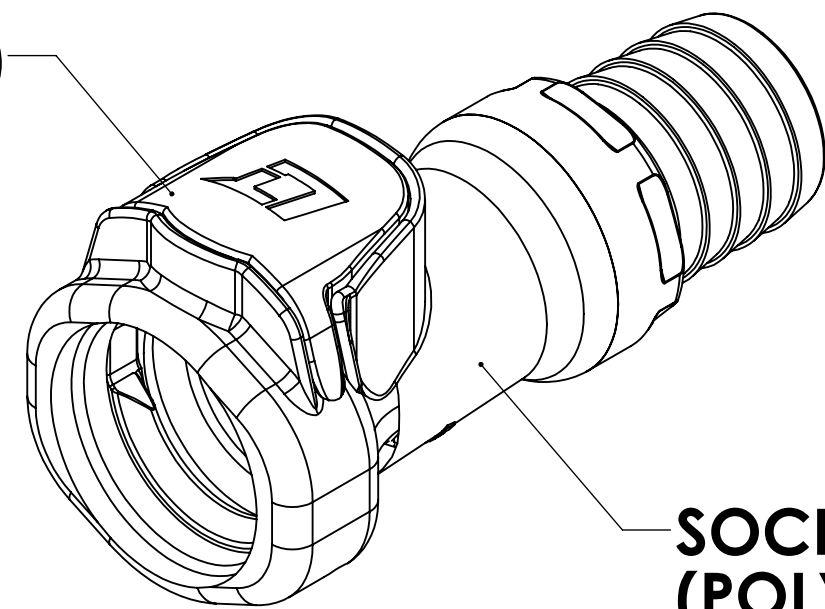


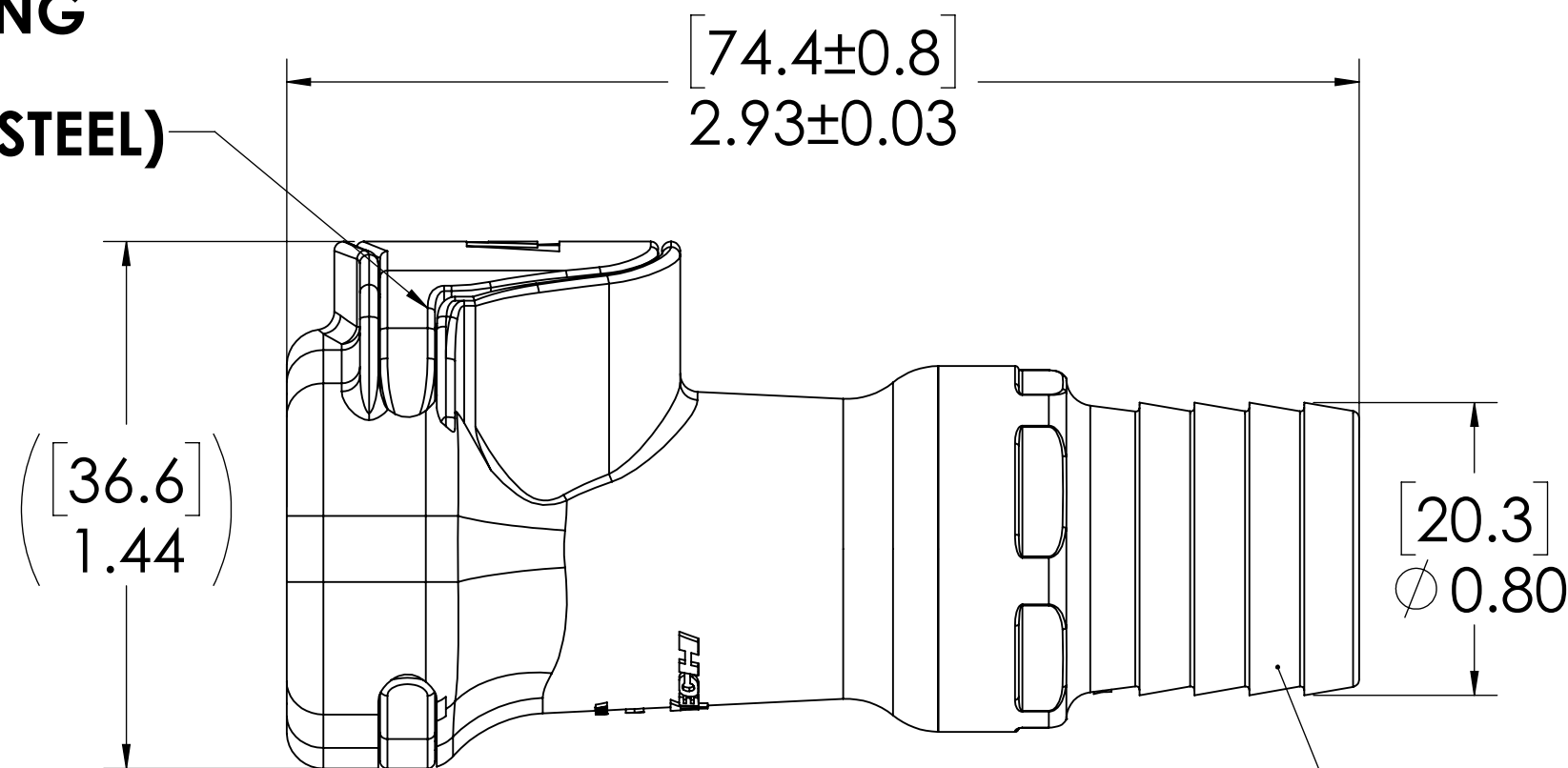
REVISIONS						
SHEET	ZONE	REV.	ECO	DESCRIPTION	DATE	APPROVED
1	D-5	A	.....	UPDATED LATCH SPRING	6/19/2014	HRC
1	ALL	A	50093	INITIAL RELEASE	9/10/2014	HRC
1	ALL	B	50253	UPDATE DWG TO CURRENT FORMAT & STANDARDS	10/30/2018	HRC

**LATCH  
(POLYPROPYLENE)**

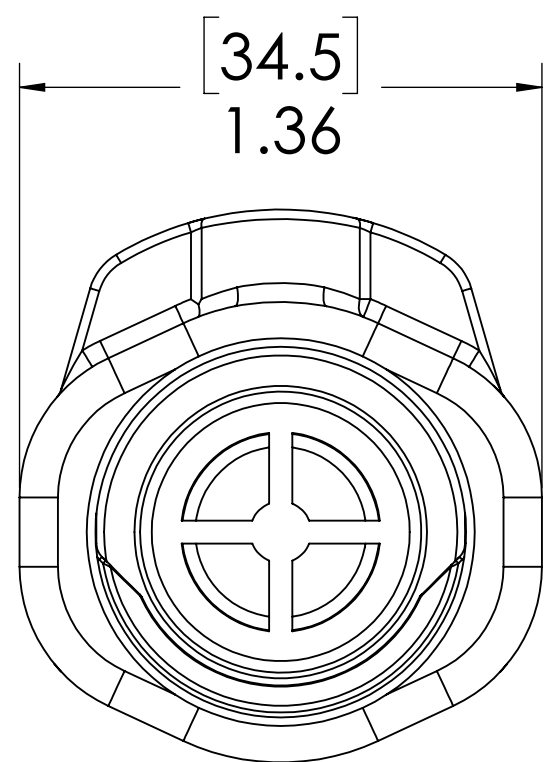


**SOCKET  
(POLYPROPYLENE)**

**LATCH SPRING  
INTERNAL  
(STAINLESS STEEL)**




**3/4" TUBE ID**



- NOTES:**
- MATERIAL: POLYPROPYLENE
  - COLOR: GREY

**FOR REFERENCE ONLY**

UNLESS OTHERWISE SPECIFIED: DIMENSIONS ARE IN INCHES TOLERANCES: FRACTIONAL ± 1/32 ANGULAR: MACH ± 0.5 BEND ± 2 ONE PLACE DECIMAL ± 0.1 TWO PLACE DECIMAL ± 0.01 THREE PLACE DECIMAL ± 0.005 TWO PLACE DUAL (mm) [± 0.12]	DRAWN	LMP	6/19/2018	 <b>LINKTECH</b> <small>DRINKING WATER TECHNOLOGIES, LLC</small>
	CHECKED	HRC	6/19/2018	
<b>PROPRIETARY AND CONFIDENTIAL</b>  THE INFORMATION CONTAINED IN THIS DRAWING IS THE SOLE PROPERTY OF LINKTECH LLC. ANY REPRODUCTION OR DISCLOSURE IN PART OR AS A WHOLE WITHOUT THE WRITTEN PERMISSION OF LINKTECH LLC IS STRICTLY PROHIBITED.	ENG APPR.	HRC	10/30/18	PART NO: <b>60PP-S2-12</b>  DESCRIPTION: <b>LinkTech 60PP Series, Inline Socket, Non-Valved, 3/4" HB, Polypropylene</b>
	MFG APPR.	BDB	10/30/18	SIZE DWG. NO. REV <b>C 60PP600055 B</b>
	PRODUCTION	LS	10/30/18	SCALE: NTS WEIGHT: SHEET 1 OF 1