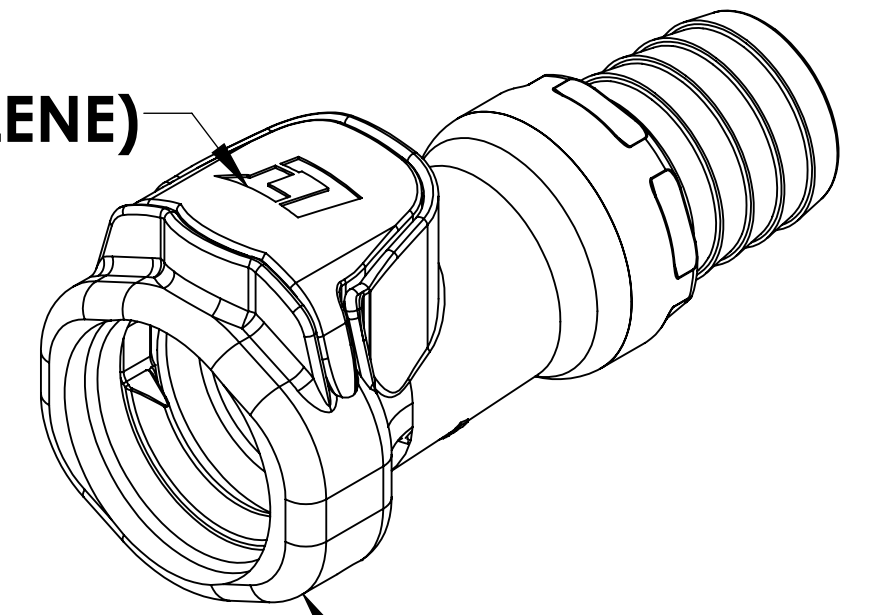


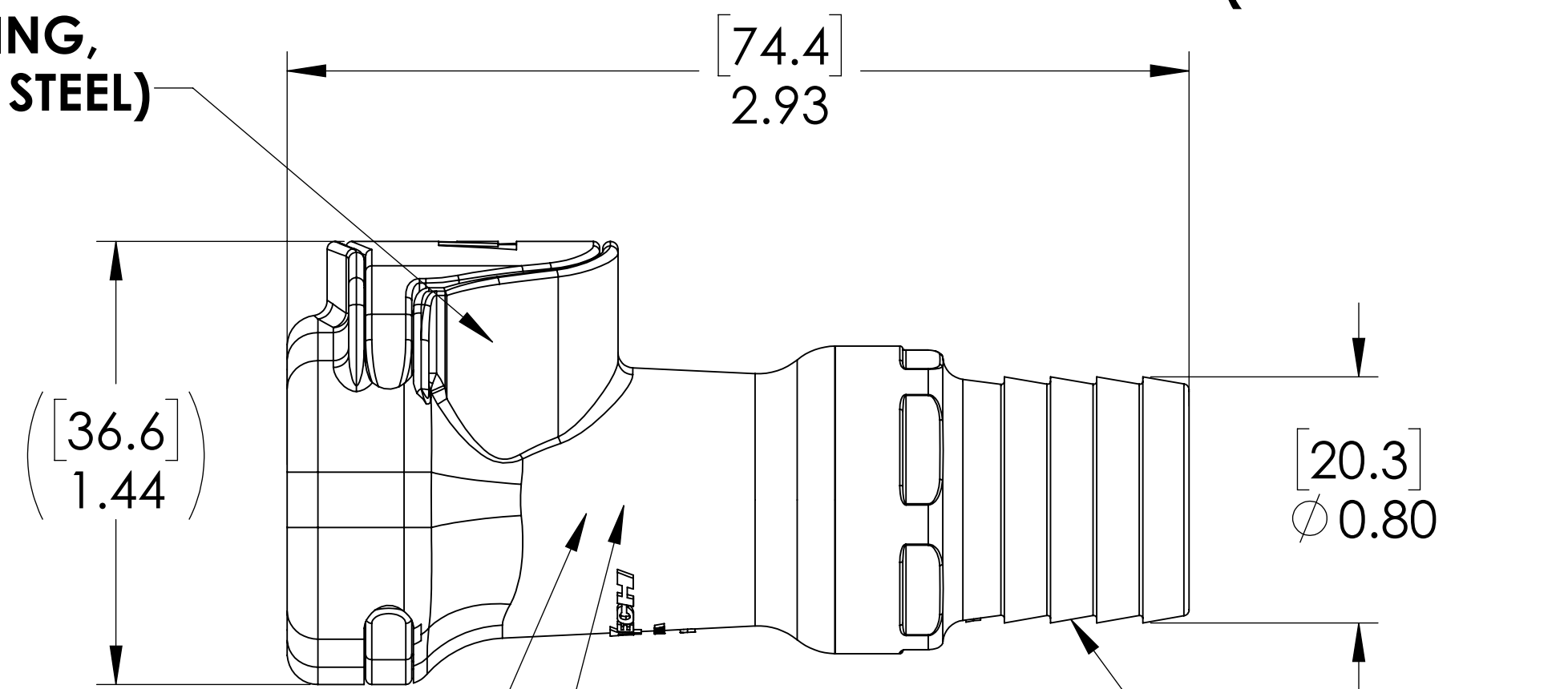
REVISIONS						
SHEET	ZONE	REV.	ECO	DESCRIPTION	DATE	APPROVED
1	A-8	A	...	ADDED O-RING LUBRICATION NOTE	6/20/2014	HRC
1	D-7	A	...	UPDATED LATCH SPRING	6/20/2014	HRC
1	ALL	A	50093	INITIAL RELEASE	9/10/2014	HRC
ALL	ALL	B	50253	2017 FORMAT UPADTE	3/8/2018	HRC

**LATCH,  
(POLYPROPYLENE)**

**SOCKET,  
(POLYPROPYLENE)**



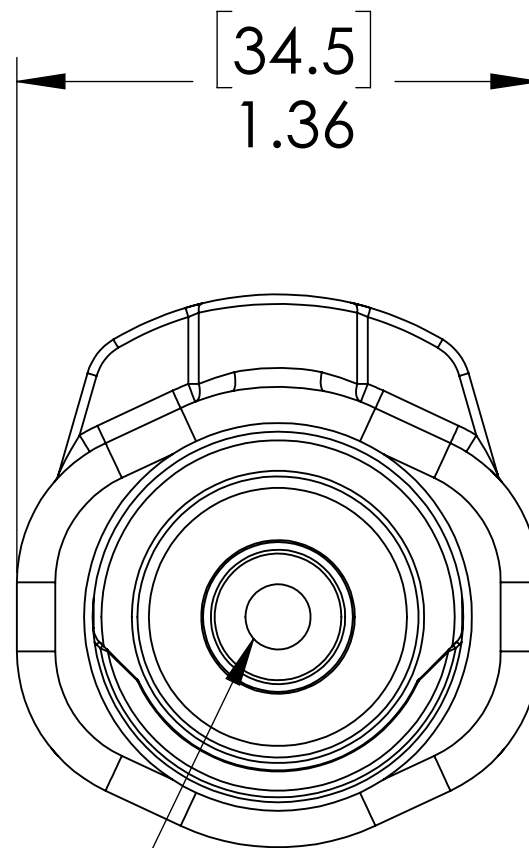
**LATCH SPRING,  
(STAINLESS STEEL)**



**VALVE O-RING,  
INTERNAL  
(EPDM)**

**VALVE SPRING,  
INTERNAL  
(STAINLESS STEEL)**

**VALVE,  
(POLYPROPYLENE)**



**NOTES:**

1. MATERIAL: POLYPROPYLENE
2. COLOR: GREY
3. O-RING MATERIAL: EPDM
4. O-RINGS LUBRICATED WITH FOOD GRADE SILICONE OIL, 350 CST.

**FOR REFERENCE ONLY**

<small>UNLESS OTHERWISE SPECIFIED: DIMENSIONS ARE IN INCHES TOLERANCES: FRACTIONAL ± 1/32 ANGULAR, MACH ± 0.5 BEND ± 2 ONE PLACE DECIMAL ± 0.1 TWO PLACE DECIMAL ± 0.01 THREE PLACE DECIMAL ± 0.005 TWO PLACE DUAL (mm) [± 0.12]</small>	DRAWN	HRC	08-26-13	
	CHECKED	HRC	08-26-13	
	ENG APPR.	HRC	03/08/18	
	MFG APPR.	BDB	03/08/18	
PRODUCTION	RK	03/08/18		<b>PART NO:</b> 60PPV-SE2-12 <b>DESCRIPTION:</b> LinkTech 60PP Series Straight Female, Valved, 750 HB, Polypropylene
<small>PROPRIETARY AND CONFIDENTIAL THE INFORMATION CONTAINED IN THIS DRAWING IS THE SOLE PROPERTY OF LINKTECH LLC. ANY REPRODUCTION OR DISCLOSURE IN PART OR AS A WHOLE WITHOUT THE WRITTEN PERMISSION OF LINKTECH LLC IS STRICTLY PROHIBITED.</small>	COMMENTS:			<b>SIZE</b> DWG. NO. REV <b>C</b> 60PP600077 <b>B</b>
SCALE: NTS		WEIGHT:	SHEET 1 OF 1	