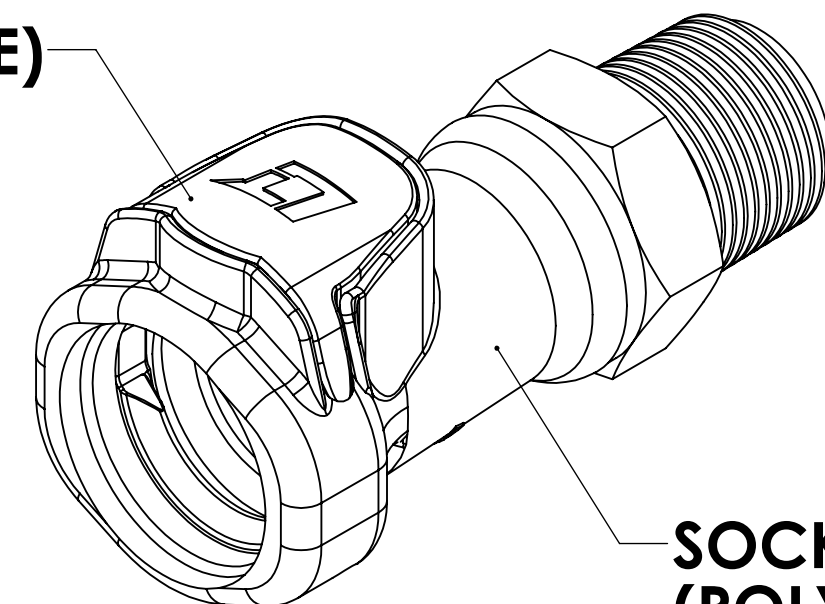
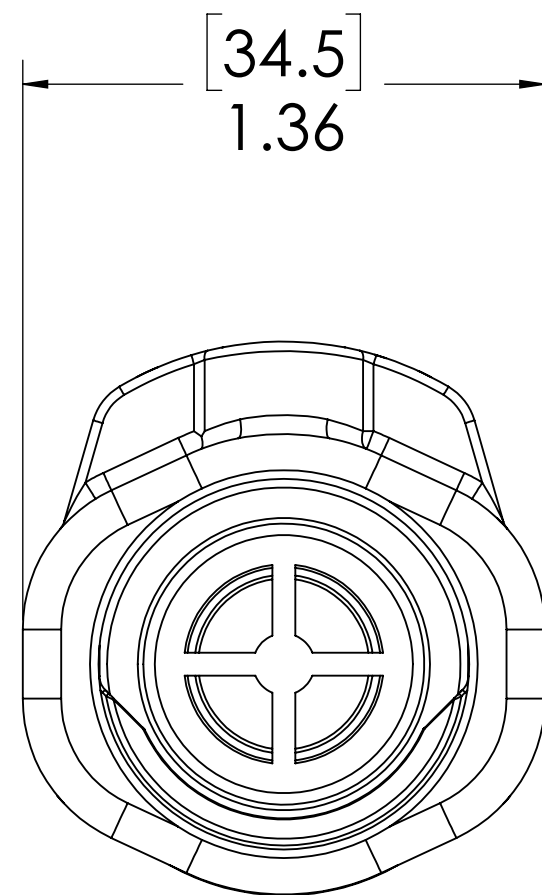


REVISIONS						
SHEET	ZONE	REV.	ECO	DESCRIPTION	DATE	APPROVED
1	D-6	A	UPDATED LATCH SPRING	8/19/2014	HRC
1	ALL	A	50108	INITIAL RELEASE	9/9/2014	HRC
1	ALL	B	50253	UPDATE DWG TO CURRENT FORMAT & STANDARDS	10/16/2018	HRC

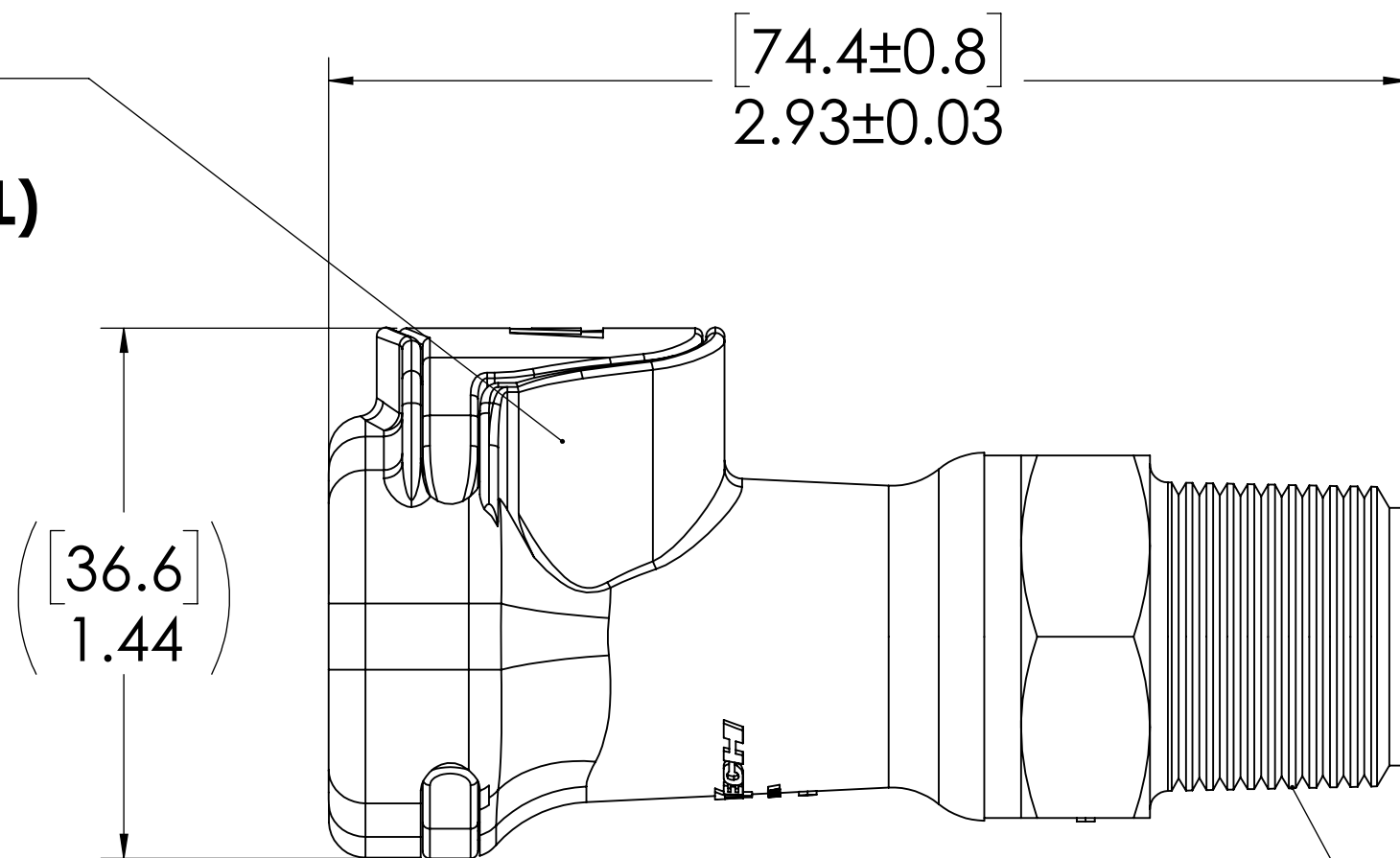
**LATCH
(POLYSULFONE)**



**SOCKET
(POLYSULFONE)**




**LATCH SPRING
INTERNAL
(STAINLESS STEEL)**



**1/2" NPT
(PIPE THREAD)**

- NOTES:**
- MATERIAL: POLYSULFONE
 - COLOR: WHITE

FOR REFERENCE ONLY

UNLESS OTHERWISE SPECIFIED: DIMENSIONS ARE IN INCHES TOLERANCES: FRACTIONAL ±1/32 ANGULAR: MACH ±0.5 BEND ±2 ONE PLACE DECIMAL ±0.1 TWO PLACE DECIMAL ±0.01 THREE PLACE DECIMAL ±0.005 TWO PLACE DUAL (mm) [±0.12]	DRAWN	LMP	7/3/2018	 PART NO: 60PS-S1-08
	CHECKED	HRC	7/3/2018	
PROPRIETARY AND CONFIDENTIAL THE INFORMATION CONTAINED IN THIS DRAWING IS THE SOLE PROPERTY OF LINKTECH LLC. ANY REPRODUCTION OR DISCLOSURE IN PART OR AS A WHOLE WITHOUT THE WRITTEN PERMISSION OF LINKTECH LLC IS STRICTLY PROHIBITED.	ENG APPR.	HRC	10/16/18	DESCRIPTION: LinkTech 60PS Series, Male Thread Socket, Non-Valved, 1/2" MNPT
	MFG APPR.	BDB	10/16/18	
	PRODUCTION	LS	10/16/18	
	COMMENTS:			SIZE DWG. NO. REV C 60PS600051 B
SCALE: NTS WEIGHT:			SHEET 1 OF 1	