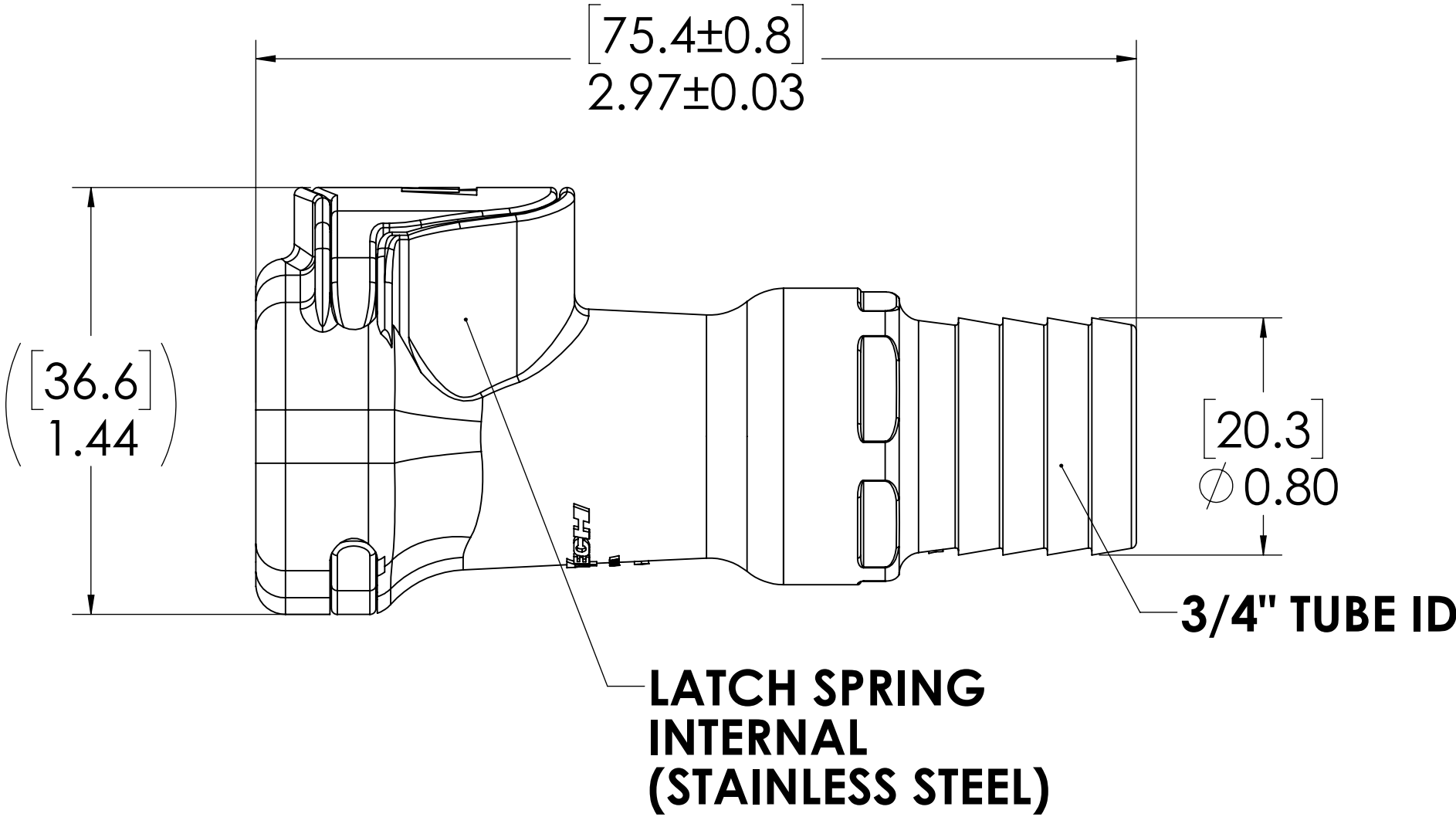
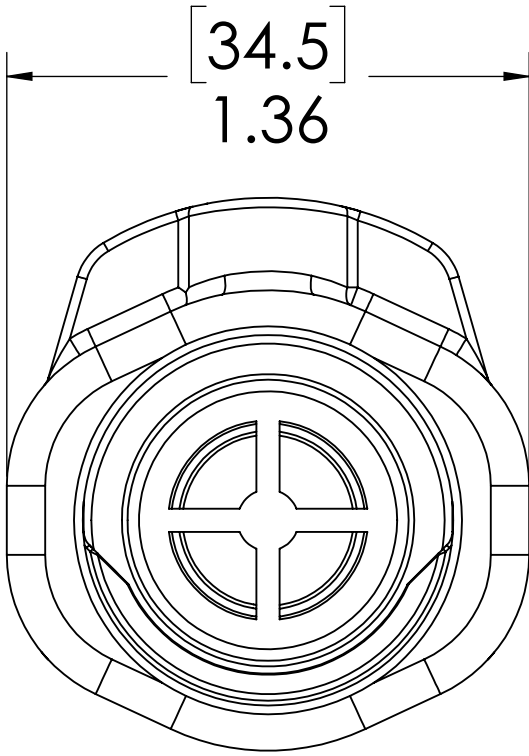


REVISIONS						
SHEET	ZONE	REV.	ECO	DESCRIPTION	DATE	APPROVED
1	D-6	A	UPDATED LATCH SPRING	8/20/2014	HRC
1	ALL	A	50108	INITIAL RELEASE	9/9/2014	HRC
1	ALL	B	50311	UPDATE DWG TO CURRENT FORMAT & STANDARDS	1/17/2020	CKE


LATCH
(POLYSULFONE)

SOCKET
(POLYSULFONE)



- NOTES:**
- 1. MATERIAL: POLYSULFONE
 - 2. COLOR: WHITE/GREY

FOR REFERENCE ONLY

UNLESS OTHERWISE SPECIFIED:		NAME	DATE	 PART NO: 60PS-S2-12
DIMENSIONS ARE IN INCHES TOLERANCES: FRACTIONAL ±1/32 ANGULAR, MACH ±0.5 BEND ±2 ONE PLACE DECIMAL ±0.1 TWO PLACE DECIMAL ±0.01 THREE PLACE DECIMAL ±0.005 TWO PLACE DUAL (mm) [±0.12]		DRAWN	HRC 09-04-13	
PROPRIETARY AND CONFIDENTIAL		CHECKED	CKE 1/9/20	
THE INFORMATION CONTAINED IN THIS DRAWING IS THE SOLE PROPERTY OF LINKTECH LLC. ANY REPRODUCTION OR DISCLOSURE IN PART OR AS A WHOLE WITHOUT THE WRITTEN PERMISSION OF LINKTECH LLC IS STRICTLY PROHIBITED.		ENG APPR.	HRC 1/17/20	
		MFG APPR.	BDB 1/17/20	DESCRIPTION: LinkTech 60PS Series, Inline Socket, Non-Valved, 3/4" HB
		PRODUCTION	LS 1/17/20	
		COMMENTS:		SIZE DWG. NO. REV
				C 60PS600055 B
				SCALE: NTS WEIGHT: SHEET 1 OF 1