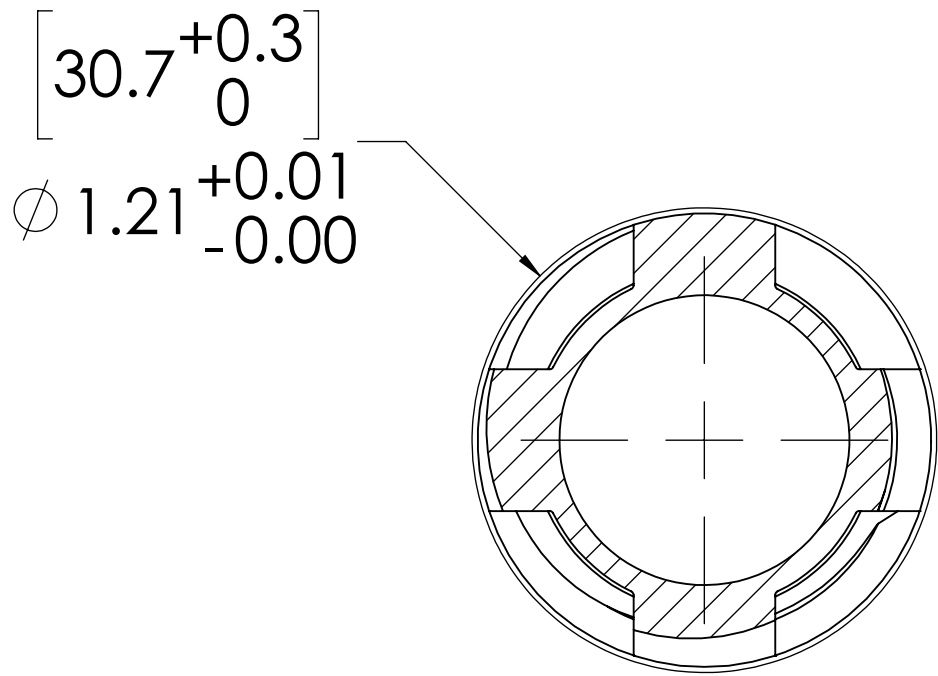
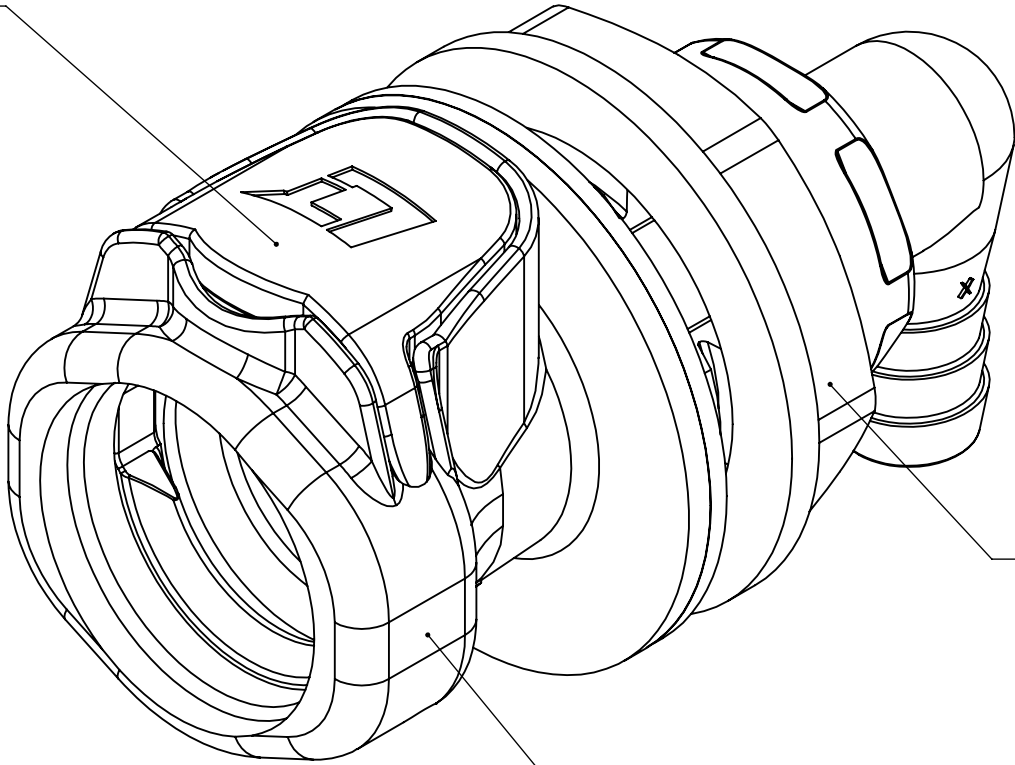


REVISIONS						
SHEET	ZONE	REV.	ECO	DESCRIPTION	DATE	APPROVED
ALL	ALL	NC	50108	INITIAL RELEASE	9/9/2014	HRC
ALL	ALL	A	50311	UPDATE DWG FORMAT TO STANDARDS	1/17/2020	CKE



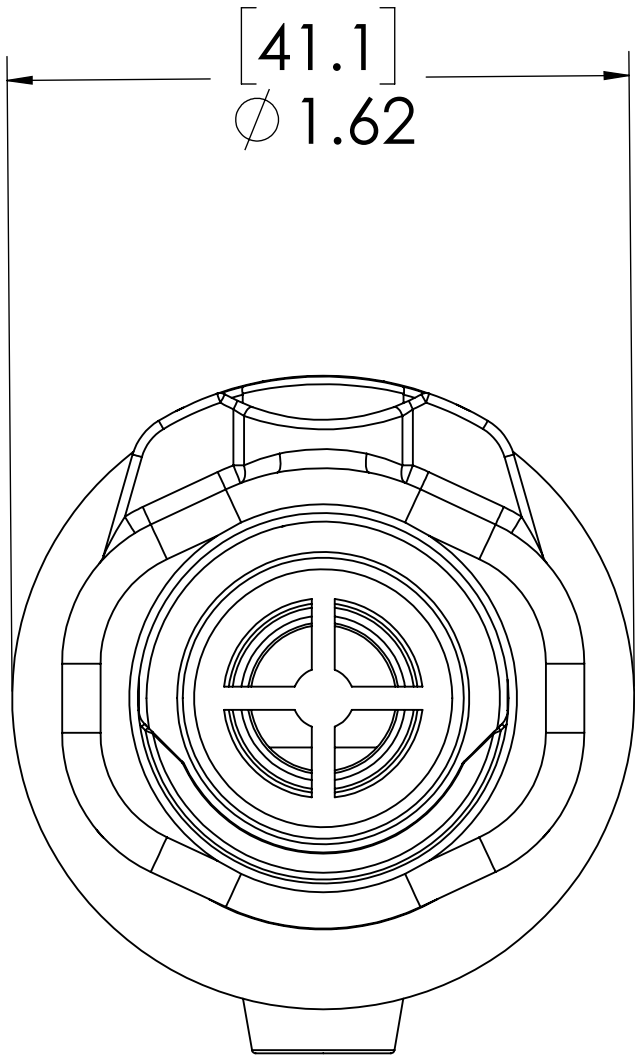
PANEL OPENING
(SECTION A-A)

LATCH,
(POLYSULFONE)

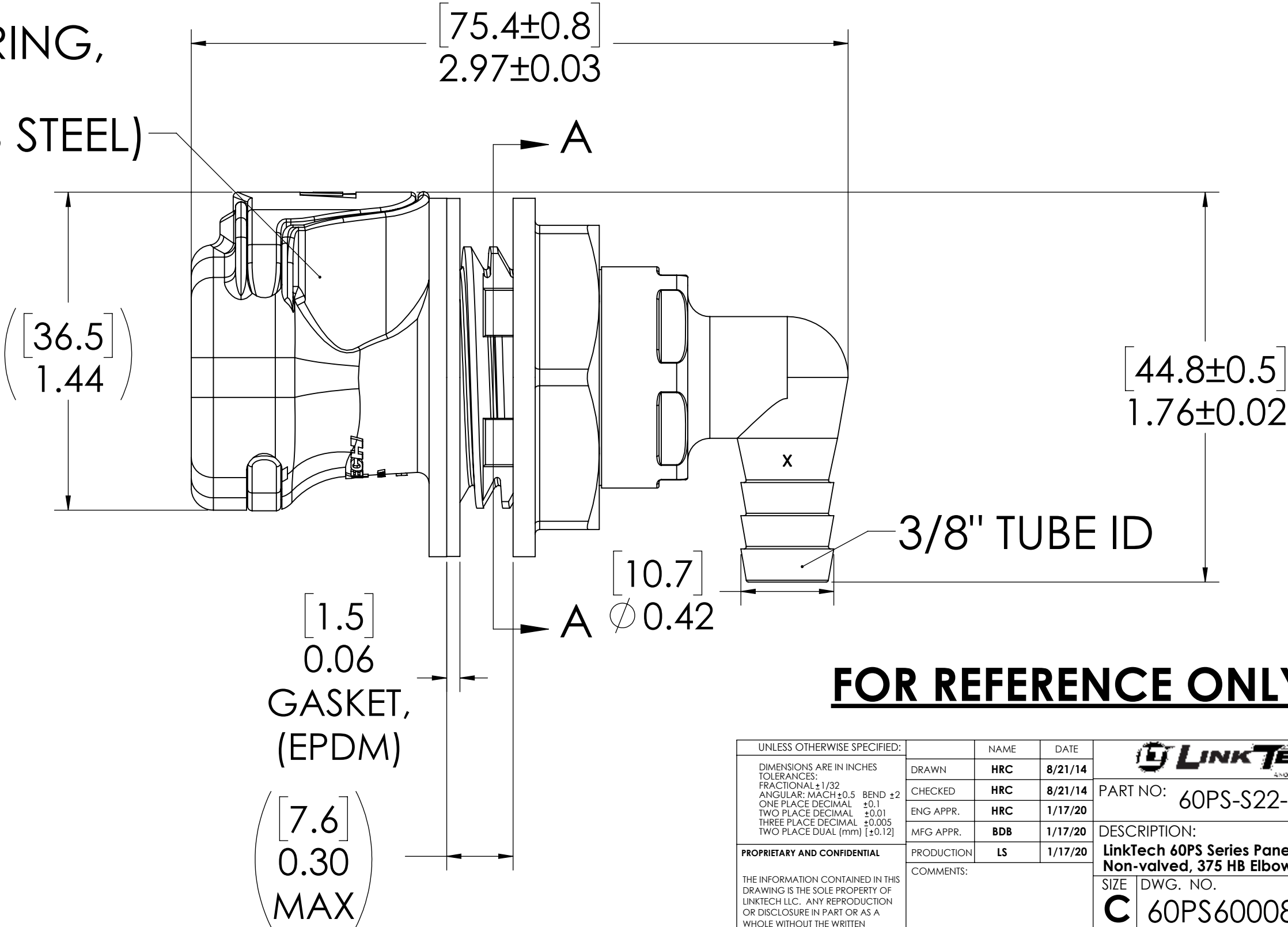


PANEL NUT,
(POLYSULFONE)

SOCKET,
(POLYSULFONE)



LATCH SPRING,
INTERNAL
(STAINLESS STEEL)



GASKET,
(EPDM)

FOR REFERENCE ONLY

- NOTES:
- 1. MATERIAL: POLYSULFONE
 - 2. COLOR: WHITE

UNLESS OTHERWISE SPECIFIED:				LINKTECH		
DIMENSIONS ARE IN INCHES TOLERANCES: FRACTIONAL ± 1/32 ANGULAR, MACH ± 0.5 ONE PLACE DECIMAL ± 0.1 TWO PLACE DECIMAL ± 0.01 THREE PLACE DECIMAL ± 0.005 TWO PLACE DECIMAL (mm) ± 0.12	DRAWN	HRC	8/21/14	PART NO: 60PS-S22-06		
	CHECKED	HRC	8/21/14			
	ENG APPR.	HRC	1/17/20	DESCRIPTION: LinkTech 60PS Series Panel Mt. Female, Non-valved, 375 HB Elbow, Polysulfone		
	MFG APPR.	BDB	1/17/20			
PROPRIETARY AND CONFIDENTIAL THE INFORMATION CONTAINED IN THIS DRAWING IS THE SOLE PROPERTY OF LINKTECH LLC. ANY REPRODUCTION OR DISCLOSURE IN PART OR AS A WHOLE WITHOUT THE WRITTEN PERMISSION OF LINKTECH LLC IS STRICTLY PROHIBITED.	PRODUCTION	LS	1/17/20	SIZE	DWG. NO.	REV
	COMMENTS:			C	60PS600087	A
				SCALE: NTS	WEIGHT:	SHEET 1 OF 1