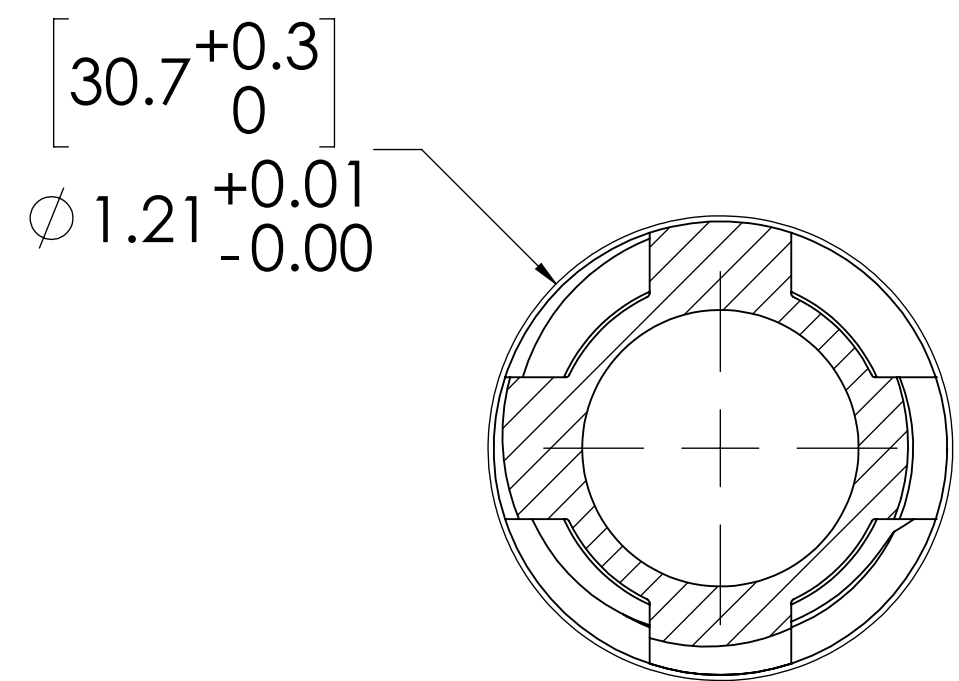
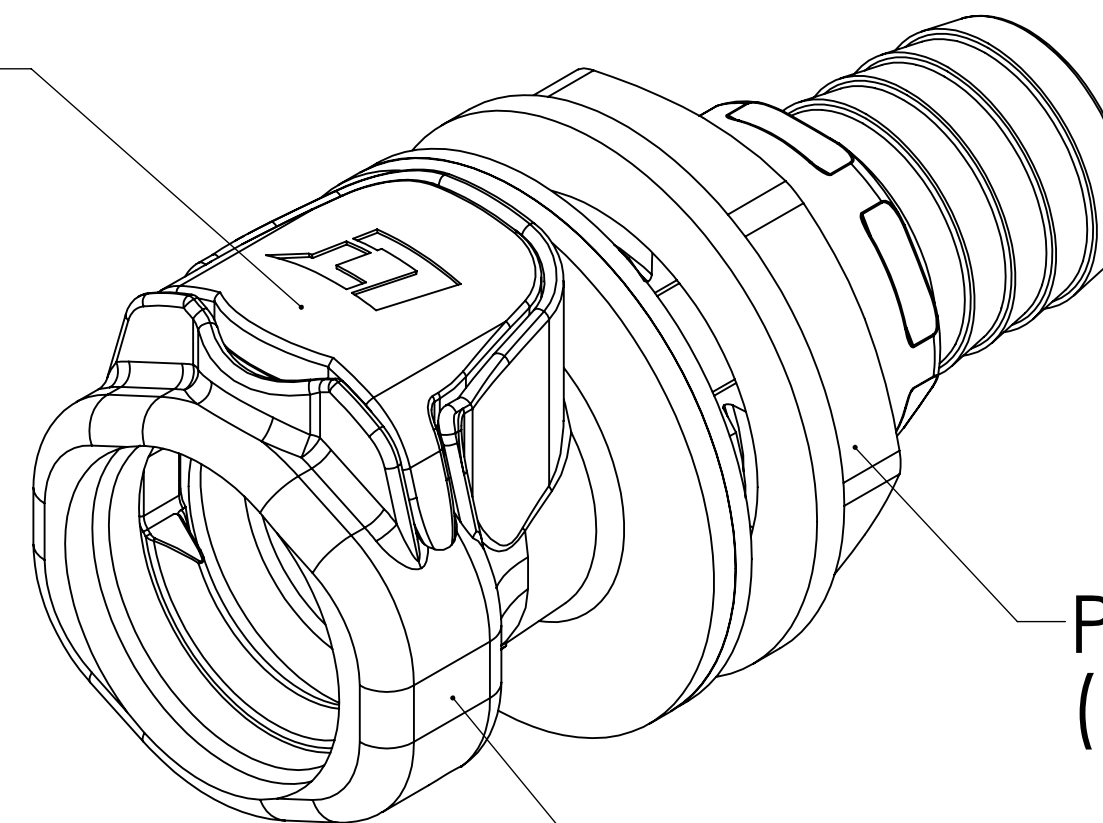


REVISIONS						
SHEET	ZONE	REV.	ECO	DESCRIPTION	DATE	APPROVED
ALL	ALL	A	50108	INITIAL RELEASE	9/9/2014	HRC
ALL	ALL	B	50311	UPDATE DWG FORMAT TO STANDARDS	1/17/2020	CKE



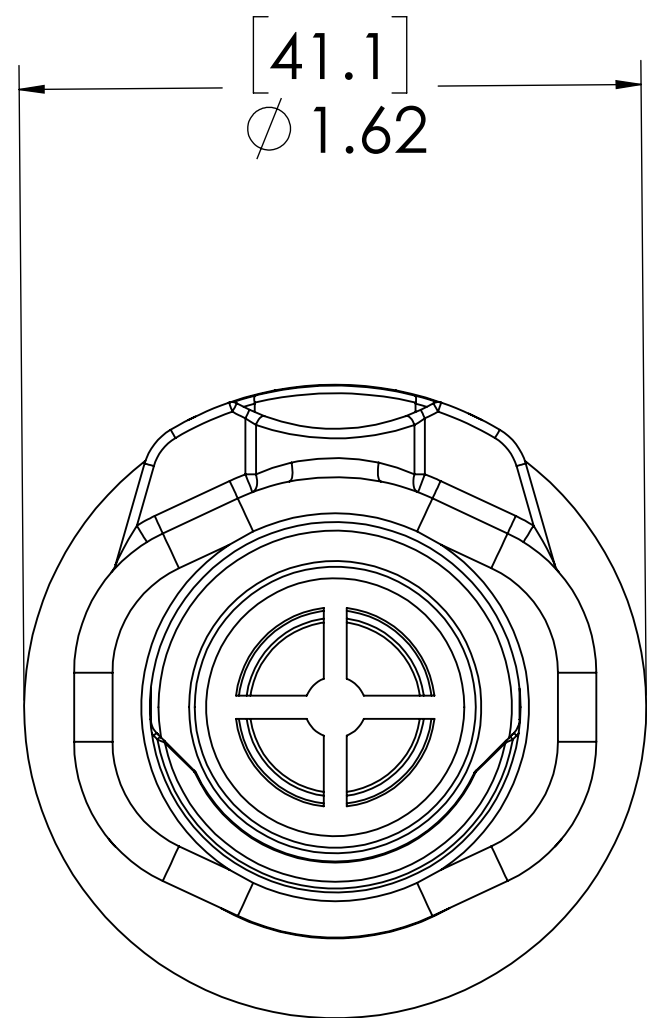
PANEL OPENING  
(SECTION A-A)

LATCH,  
(POLYSULFONE)

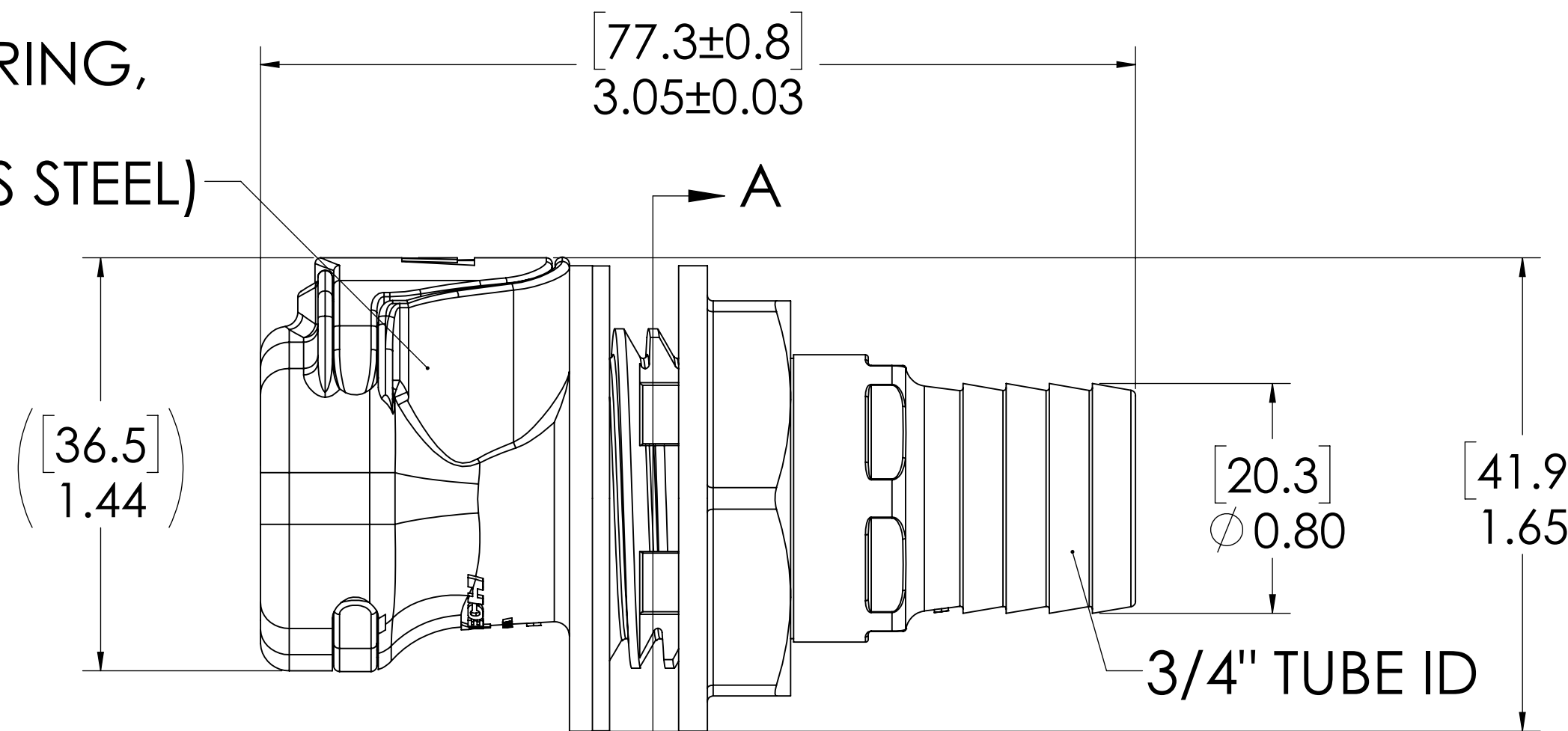


PANEL NUT,  
(POLYSULFONE)

SOCKET,  
(POLYSULFONE)



LATCH SPRING,  
INTERNAL  
(STAINLESS STEEL)



$\left[ 1.5 \right]$   
 $0.06$   
 GASKET,  
(EPDM)

$\left[ 7.6 \right]$   
 $0.30$   
 MAX

**FOR REFERENCE ONLY**

- NOTES:**
- MATERIAL: POLYSULFONE
  - COLOR: WHITE

UNLESS OTHERWISE SPECIFIED:		NAME	DATE	 <b>LINKTECH</b> AN OFFICIAL COMPANY
DIMENSIONS ARE IN INCHES		DRAWN	9/20/13	
TOLERANCES:		CHECKED	1/17/19	
FRACTIONAL ± 1/32		ENG APPR.	1/17/20	
ANGULAR: MACH ± 0.5 BEND ± 2		MFG APPR.	BDB 1/17/20	PART NO: 60PS-S3-12
ONE PLACE DECIMAL ± 0.1		Q.A.	LS 1/17/20	DESCRIPTION: LinkTech 60PS Series Panel Mt. Female, Non-valved, 750 HB, Polysulfone
TWO PLACE DECIMAL ± 0.01		COMMENTS:		SIZE DWG. NO. REV
THREE PLACE DECIMAL ± 0.005				<b>C</b> 60PS600058 <b>B</b>
TWO PLACE DUAL (mm) [±0.12]				SCALE: NTS WEIGHT: SHEET 1 OF 1
<small>           PROPRIETARY AND CONFIDENTIAL            THE INFORMATION CONTAINED IN THIS DRAWING IS THE SOLE PROPERTY OF LINKTECH LLC. ANY REPRODUCTION OR DISCLOSURE IN PART OR AS A WHOLE WITHOUT THE WRITTEN PERMISSION OF LINKTECH LLC IS STRICTLY PROHIBITED.         </small>				