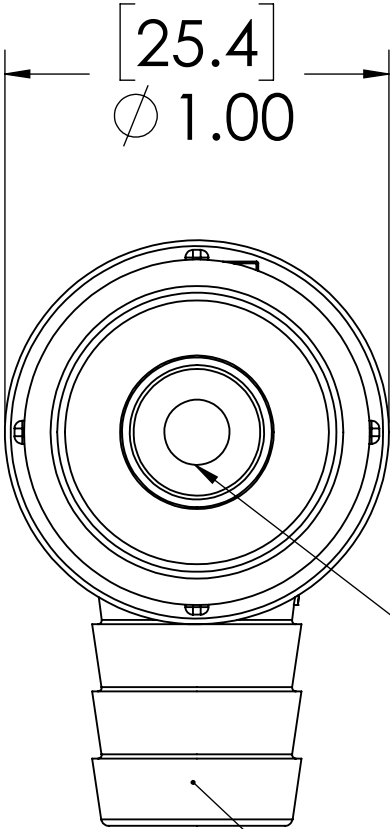
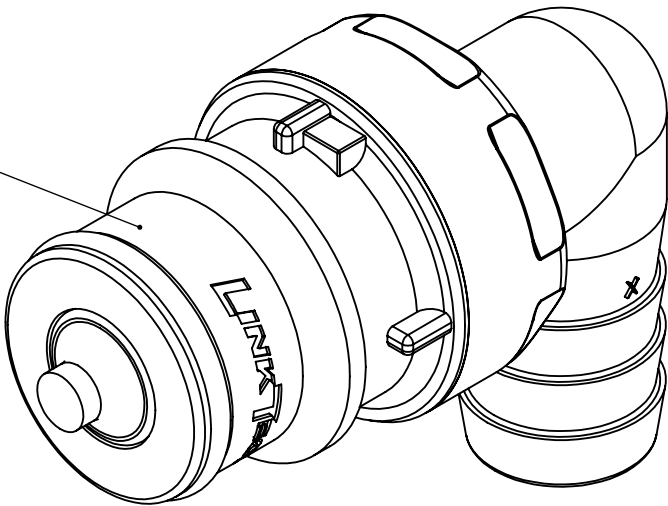


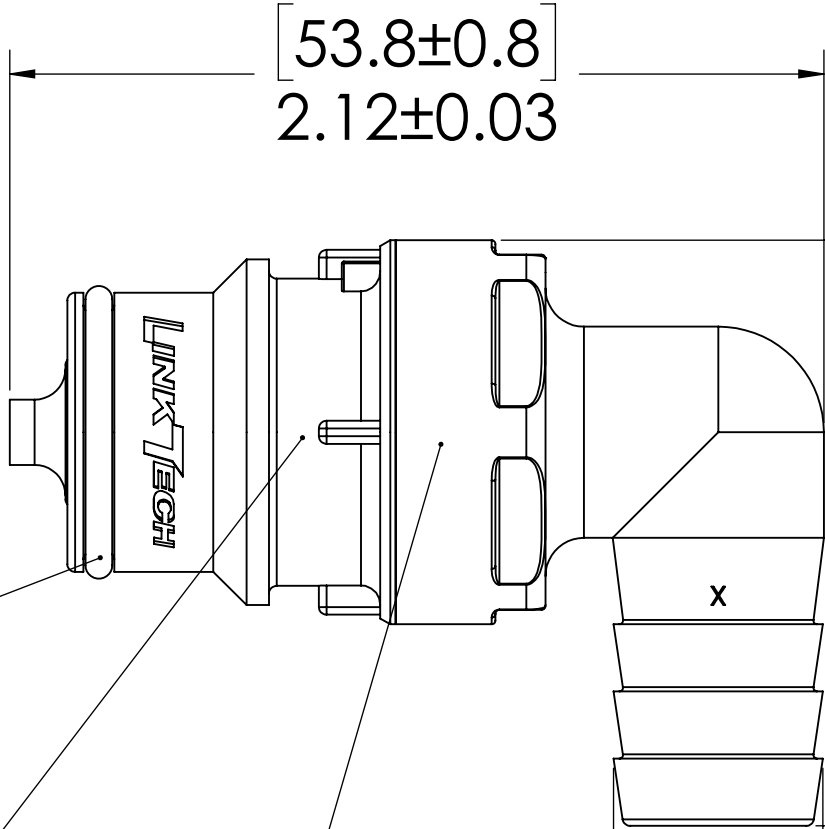
REVISIONS						
SHEET	ZONE	REV.	ECO	DESCRIPTION	DATE	APPROVED
1	A-8	A	ADDED O-RING AND LUBRICATION NOTE	8/20/2014	HRC
1	ALL	A	50108	INITIAL RELEASE	9/9/2014	HRC
1	ALL	B	50257	O-RING AND DWG FORMAT UPDATE	7/9/2018	HRC

PLUG,
(POLYSULFONE)



VALVE,
(POLYSULFONE)

1/2" TUBE ID



O-RING,
(EPDM)

VALVE O-RING,
INTERNAL
(EPDM)

VALVE SPRING,
INTERNAL
(POLYSULFONE)


38.7±0.5
1.53±0.02

13.8
Ø 0.55

NOTES:

1. MATERIAL: POLYSULFONE
2. COLOR: WHITE
3. O-RING MATERIAL: EPDM
4. O-RINGS LUBRICATED WITH FOOD GRADE SILICONE OIL, 350 CST.

FOR REFERENCE ONLY

UNLESS OTHERWISE SPECIFIED:			NAME	DATE					
DIMENSIONS ARE IN INCHES TOLERANCES: FRACTIONAL ± 1/32 ANGULAR: MACH ±0.5 BEND ±2 ONE PLACE DECIMAL ±0.1 TWO PLACE DECIMAL ±0.01 THREE PLACE DECIMAL ±0.005 TWO PLACE DUAL (mm) [±0.12]			DRAWN	HRC	9/4/13	PART NO: 60PSV-PE4-08			
			CHECKED	HRC	9/4/13				
			ENG APPR.	HRC	7/9/18	DESCRIPTION: LinkTech 60PS Series Elbow Male, Valved, 1/2" HB, Polysulfone			
			MFG APPR.	BDB	7/9/18				
			PRODUCTION	LS	7/9/18				
PROPRIETARY AND CONFIDENTIAL			COMMENTS:	SIZE DWG. NO. REV C 60PS600071 B					
THE INFORMATION CONTAINED IN THIS DRAWING IS THE SOLE PROPERTY OF LINKTECH LLC. ANY REPRODUCTION OR DISCLOSURE IN PART OR AS A WHOLE WITHOUT THE WRITTEN PERMISSION OF LINKTECH LLC IS STRICTLY PROHIBITED.									
						SCALE: NTS	WEIGHT:	SHEET 1 OF 1	