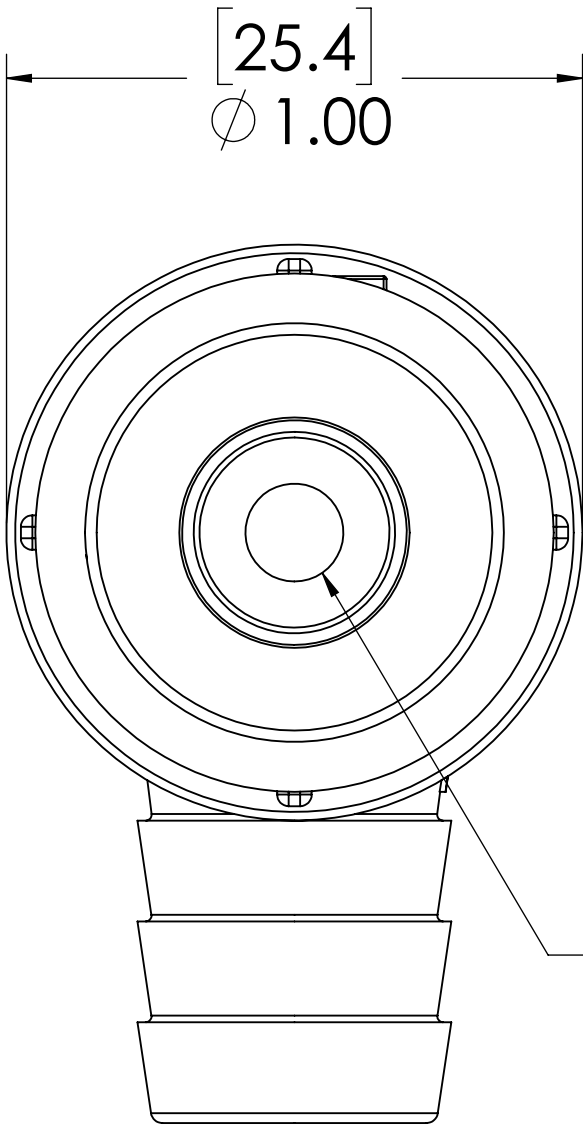
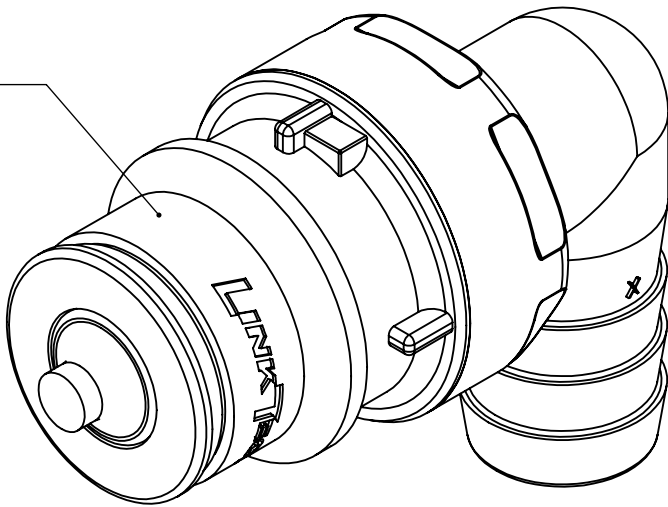
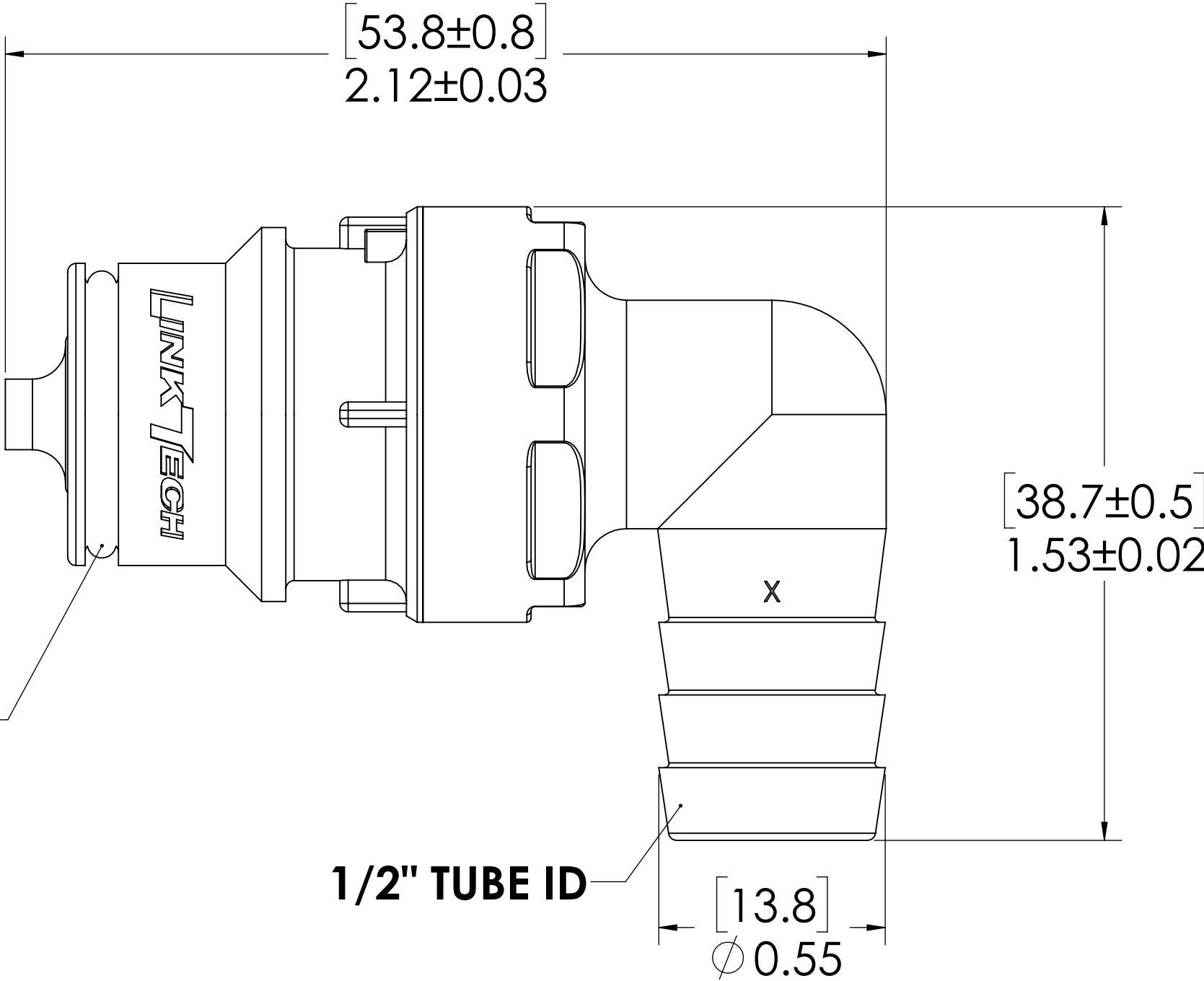


REVISIONS						
SHEET	ZONE	REV.	ECO	DESCRIPTION	DATE	APPROVED
1	ALL	A	50257	O-RING AND DWG FORMAT UPDATE	10/10/2018	HRC

PLUG  
(POLYSULFONE)



VALVE  
(POLYSULFONE)




O-RING,  
(EPDM)

1/2" TUBE ID

- NOTES:**
- MATERIAL: POLYSULFONE
  - COLOR: BLACK
  - O-RING MATERIAL: EPDM
  - O-RINGS LUBRICATED WITH FOOD GRADE SILICONE OIL, 350 CST.

**FOR REFERENCE ONLY**

UNLESS OTHERWISE SPECIFIED:		NAME	DATE			
DIMENSIONS ARE IN INCHES TOLERANCES: FRACTIONAL ±1/32 ANGULAR: MACH ±0.5 BEND ±2 ONE PLACE DECIMAL ±0.1 TWO PLACE DECIMAL ±0.01 THREE PLACE DECIMAL ±0.005 TWO PLACE DUAL (mm) [±0.12]	DRAWN	C.DAVIS	7/14/15	PART NO: <b>60PSV-PE4-08BLK</b>		
	CHECKED	HRC	7/14/15			
	ENG APPR.	HRC	10/10/18	DESCRIPTION: LinkTech 60PS Series Elbow Male, Valved, 1/2" HB, Molded Black Color, Polysulfone		
	MFG APPR.	BDB	10/10/18			
	PRODUCTION	LS	10/10/18			
PROPRIETARY AND CONFIDENTIAL	COMMENTS:			SIZE	DWG. NO.	REV
THE INFORMATION CONTAINED IN THIS DRAWING IS THE SOLE PROPERTY OF LINKTECH LLC. ANY REPRODUCTION OR DISCLOSURE IN PART OR AS A WHOLE WITHOUT THE WRITTEN PERMISSION OF LINKTECH LLC IS STRICTLY PROHIBITED.				<b>C</b>	<b>60PS600118</b>	<b>A</b>
				SCALE: NTS	WEIGHT:	SHEET 1 OF 1